

AMES DCDC

SIZE

4", 6", 8", 10"

DESCRIPTION

This valve is a double check detector assembly. Production was discontinued approximately 1986. The main assembly is similar in design to the Ames DC. Special tools are suggested for proper repair. The bypass assembly used was the 3/4" Watts Model 709.

BASIC REPAIR KIT

Main line repair kit contains all rubber discs or clapper plates, cover gaskets, and mounting bolt washers.

<u>SIZE</u>	<u>KIT NO</u>	<u>SPECIAL TOOLS</u>	
		<u>TONG TOOL</u>	<u>RETAINER CLIP</u>
4"	DC400 *	N/A	7013911
6"	DC600 *	N/A	7013912
8"	DCA800 *	7016090	N/A
10"	DCA800 *	7016090	N/A

Bypass repair kit contains all disc holders and O'rings

<u>SIZE</u>	<u>KIT NO</u>
Watts 709 3/4"	709RT075

IMPORTANT FEATURES

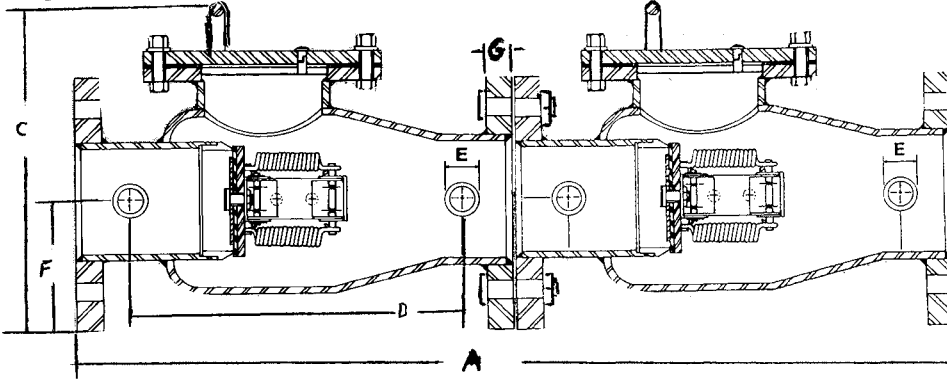
~See Ames Model DC for main valve

~See Watts 709 3/4" for bypass

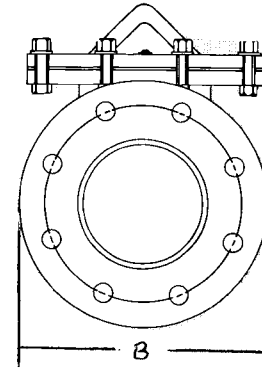
~Factory repair information enclosed



SHOWN LESS BYPASS



HALF SECTION



END VIEW

Ames Detector - Weights & Dimensions (inches)

Size	Part Number	A	B	C	D	E	F	G	Approx. Net Wt.
4"	A113-524	33"	9"	13"	12-1/2"	1NPT	5"	15/16"	160 lbs.
6"	A113-526	45"	11"	15-1/2"	17"	1-1/2NPT	6"	1"	235 lbs.
8"	A113-528	53"	13.5"	18 1/2"	21"	2NPT	7-1/2"	1-1/8"	390 lbs.
10"	A113-530	83 1/4"	16"	21-3/4"	28"	2NPT	9-3/4"	1-1/4"	465 lbs.

Additional Features

The Ames double check detector check valve is used to prevent backflow from fire protection lines into the municipal water system. The device consists of two independently operating, spring loaded check valves, two UL listed OS&Y gate valves, and a bypass assembly.

The bypass assembly consists of a meter which registers in either gallons or cubic measurements, a double check backflow preventer including shut-off valves and required testcocks.

The Ames double check detector check valve is manufactured for ease of installation, dependability, durability, and in-line maintenance. The main bodies are built from heavy-duty steel with a galvanized finish. All internal parts are made from stainless steel to prevent corrosion and are easily replaceable for service or repair.

Flow Characteristics

Flow (GPM)	Friction loss in PSI*			
	4"	6"	8"	10"
200	7.60	7.20	-	-
400	7.80	7.79	-	-
600	8.90	8.05	5.20	5.39
800	-	8.22	5.10	5.20
1000	-	8.40	4.50	4.99
1200	-	8.48	4.70	4.74
1500	-	8.58	4.10	4.13
2000	-	-	2.32	2.35

Developed by USC Foundation for Cross Connection Control.

Other Specifications

- * Unit comes assembled with bypass which includes water meter and backflow prevention device. testcocks are included.
- * Rated working pressure 4", 6", 8" (175 PSI), 10" (150PSI).
- * Flange dimensions and holes in accordance with NASI B16.5 Class 125.
- * All internal metal parts are stainless steel with exception of bronze seat ring.
- * Body nameplate provides nominal size, direction of flow, PSI rating and year of manufacture.

***USC
FCCCHR**