

# FEBCO 760

## SIZE

1/2", 3/4", 1", 1 1/2", 2"

## DESCRIPTION

This was a pressure vacuum breaker. The unit was produced from approximately 1950 to 1975. It was a bronze bodied unit. Most internal parts are made of bronze. The assembly was not in-line repairable and had to be to disassembled to repair it. The original model numbers were different for each size. Some may still have these older original model numbers on them: Model 610: 1/2" and 3/4", Model 620: 1 1/2"-2" size. The spring was not contained when the body was disassembled. The seats were not replaceable.

## BASIC REPAIR KIT

The repair kit contains diaphragm, and rubber discs.

<u>SIZE</u>	<u>KIT NO</u>
1/2"-3/4"	760050 *◆
1"	760100 *◆
1 1/2"-2"	760200 *◆

## IMPORTANT FEATURES

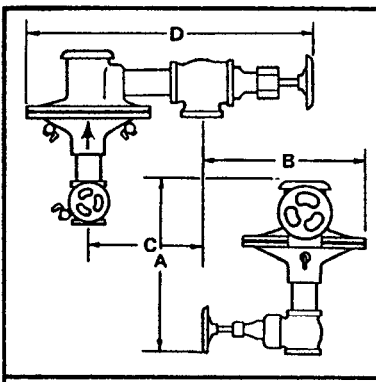
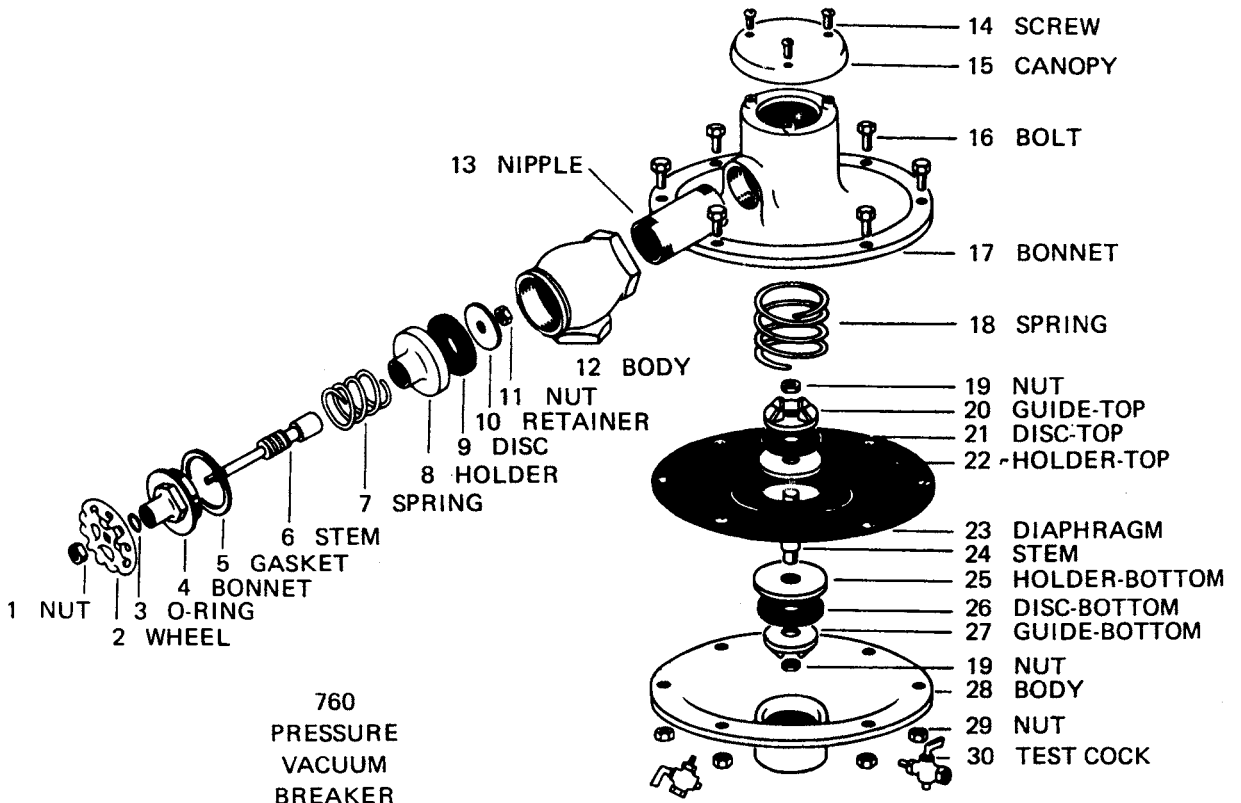
~ *Bronze body*

~ *Not in line repairable*

~ *Check seat is not replaceable*

~ *Check springs are not contained*





### DIMENSIONS AND WEIGHTS

760	A	B	C	D	Weight
1/2"	7 3/4"	4"	4 3/4"	9 1/4"	10
3/4"	8"	4 1/2"	5"	10 1/4"	10
1"	8 3/4"	5"	5 1/2"	11"	13
1 1/2"	13"	7 1/4"	8"	17 1/4"	34
2"	12"	8"	7"	18"	36

### FLOW LOSS CHART

