

FEBCO 766

SIZE

1/2", 3/4", 1"

DESCRIPTION

This is a pressure vacuum breaker assembly. Production began in 1998 and was discontinued in 2003. This model utilizes a bronze body and contains a replaceable check seat. The check spring is contained when the bonnet is removed. The test cocks are mounted on the shut-off valves instead of the valve body.

BASIC REPAIR KIT

The repair kit contains discs and O-rings

<u>SIZE</u>	<u>KIT NO</u>
1/2"-3/4"	905360
1"	905361

IMPORTANT FEATURES

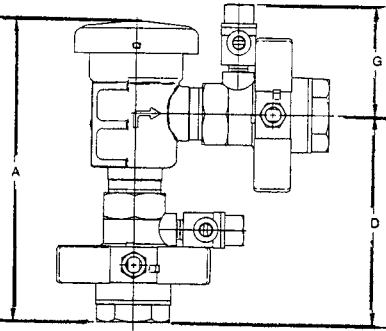
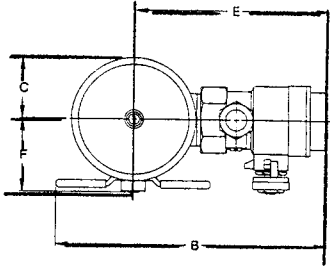
- ~Replaceable check seat*
- ~Bronze body*
- ~Test cocks mounted on shut-off*
- ~Factory repair information enclosed*



SPECIFICATION SHEET MODEL 766

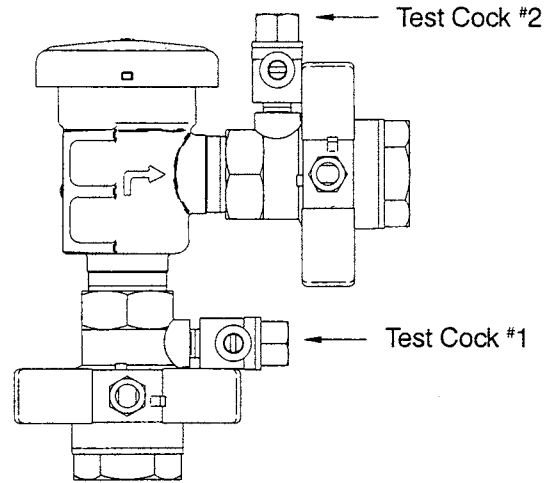


PRESSURE VACUUM BREAKER



Characteristics and Materials

- Maximum working pressure ————— 150 psi (1034 KPa)
- Hydrostatic test pressure ————— 300 psi (2069 KPa)
- Temperature range ————— 32°F to 140°F (0°C to 60°C)
- Fluid ————— Water
- End detail ————— Threaded ANSI B2.1
- Main valve body ————— Bronze
- Elastomers ————— Silicone

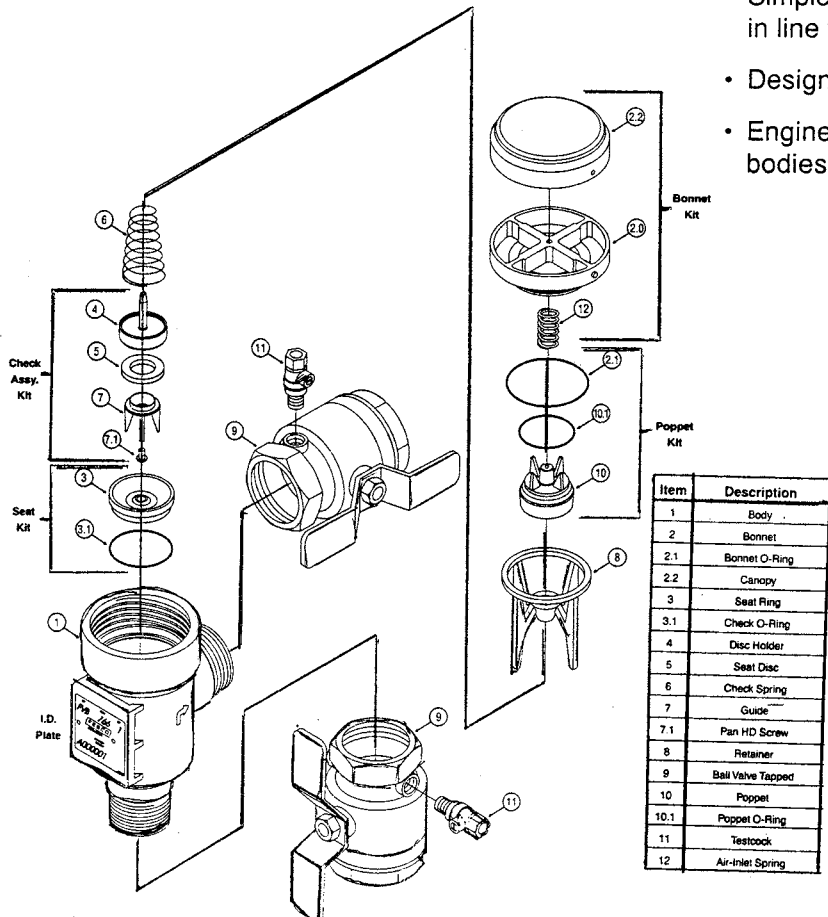


Features

- Available in 1/2", 3/4", and 1".
- All bronze body for durability. One check valve and an air opening port in one assembly.
- Lightweight poppet seals air opening under minimum flow conditions.
- Simple service procedures. All internal parts serviceable in line from the top of the unit.
- Designed for minimum head loss.
- Engineered plastic bonnet and poppet protect valve bodies from freeze damage.

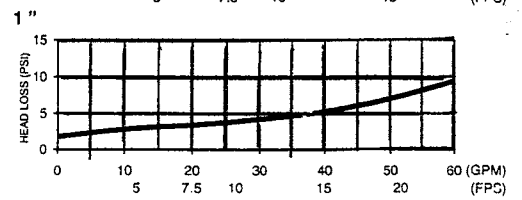
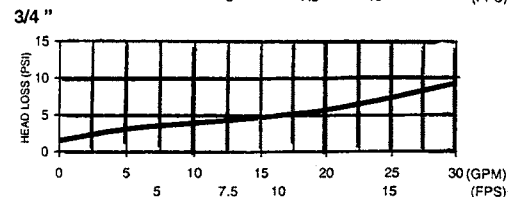
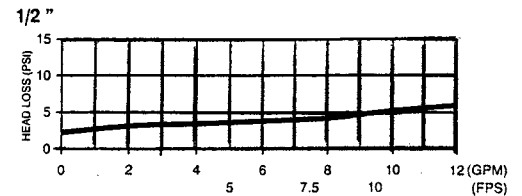
(U.S. - Inches)

SIZE	A	B	C	D	E	F	G	Lbs
1/2	6	5 1/8	1 1/4	4	3 7/8	1 4/9	2 3/8	2.4
3/4	6 2/7	5 3/4	1 1/4	4 1/4	4 1/6	1 5/8	2 3/8	3.0
1	7 2/7	6 1/2	1 2/3	5	4 3/4	1 6/7	2 3/7	5.0



Model 766 Flow Curves

Documented flow curve established by the Foundation for Cross-Connection Control and Hydraulic Research at the University of Southern California.



FLOW RATE (GPM)
VELOCITY (FPS)