

FEBCO 770

SIZE

1", 1 1/4", 1 1/2", 2", 2 1/2", 3", 4", 6", 8"

DESCRIPTION

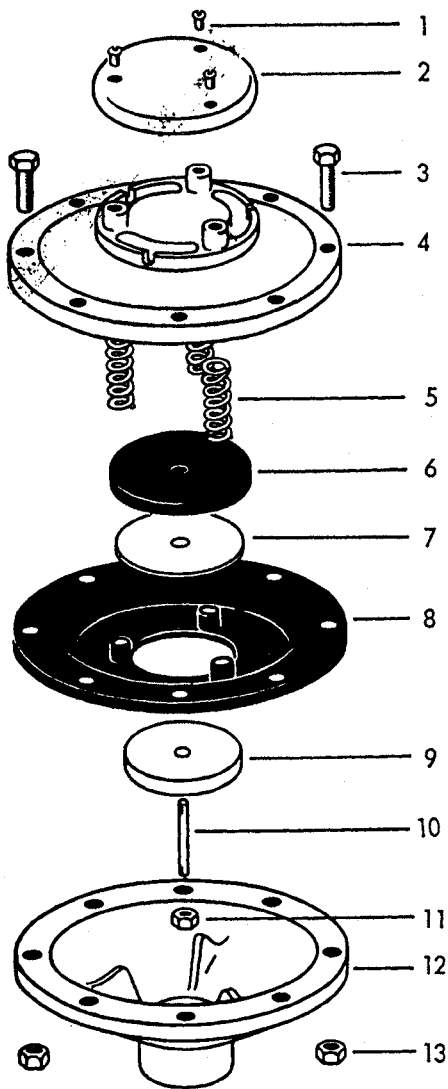
This was a pressure vacuum breaker. It was produced from approximately 1955 to 1975. Sizes 1"-2" were a single check pressure vacuum breaker. Sizes 2 1/2"-8" were a two check pressure vacuum breaker. The 1"-2" sizes used a bronze bodied spring loaded check with the air inlet head attached to a tee on the side. The 2 1/2"-8" size used a cast iron swing check which was not loaded.

BASIC REPAIR KIT

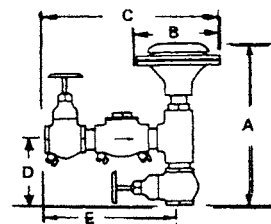
The repair kit includes rubber discs, diaphragm, and gaskets.

<u>SIZE</u>	<u>KIT NO</u>
1"	770100 ◆
1 1/4"	770125 ◆
1 1/2"	770150 ◆
2"	770200 ◆
2 1/2"	770250 ◆
3"	770300 ◆
4"	770400 ◆
6"	770600 ◆
8"	770800 ◆

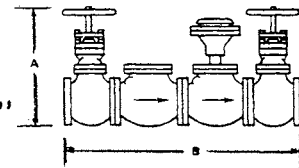




770 Assembly: Sizes 1" - 1 1/4" - 1 1/2" - 2"



770 Assembly: Sizes 2 1/2" - 3" - 4" - 6" - 8"



DIMENSIONS AND WEIGHTS

770 Screwed - One Check Valve						
	A	B	C	D	E	Weight
1"	14"	6 1/4"	13 1/4"	5 1/4"	9 1/2"	30
1 1/4"	14 1/4"	6 1/4"	15 1/4"	5 1/4"	11 1/4"	33
1 1/2"	14 1/2"	6 1/4"	16"	5 1/2"	11 3/4"	35
2"	15 1/2"	6 1/4"	17"	6"	12 3/4"	43
770 Flanged - Two Check Valves						
2 1/2"	16"	32"				224
3"	18"	35"				274
4"	21 1/2"	41"				435
6"	27"	49"				800
8"	33"	62"				1315

FLOW LOSS CHART

AIR INLET HEAD

- 2 Canopy
- 3 Bolt
- 4 Upper Body
- 5 Air Inlet Spring
- 6 Air Inlet Disc
- 7 Disc Washer
- 8 Diaphragm
- 9 Washer
- 10 Stem
- 11 Stem Nut
- 12 Lower Body
- 13 Nut

