

FEBCO 831

SIZE

2 1/2", 3", 4", 6", 8", 10"

DESCRIPTION

This is a double check detector assembly production began in 2000 and was discontinued in 2007. The mainline utilizes an assembly similar to the Model 830. The bypass uses the 850B Model.

BASIC REPAIR KIT

The repair kit contains discs and O-rings

<u>SIZE</u>	<u>KIT NO</u>
2 1/2"-3"	830250 *
4"	905465
6"	830600 *
8"	830800 *
10"	830001 *

Bypass repair kit contains discs and O-rings

<u>SIZE</u>	<u>KIT NO</u>
3/4" 850B	905342

IMPORTANT FEATURES

~Integral butterfly shut-off

~Mainline assembly see Model 830

~Bypass assembly see Model 850B

~Factory repair information enclosed



SPECIFICATION SHEET MODEL 831 (2½" - 10")

DOUBLE CHECK DETECTOR ASSEMBLY

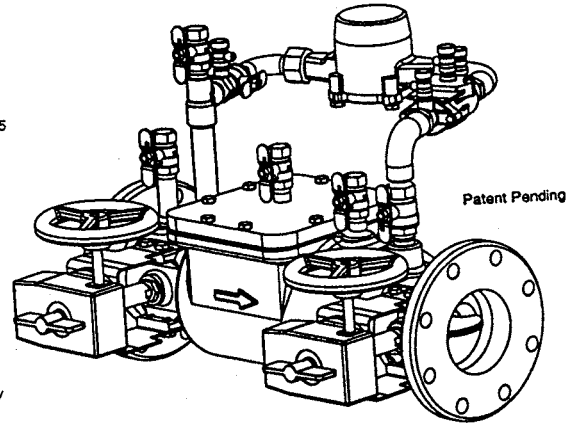


Features

- Short lay length
- Integral butterfly shut-offs
- Low head loss
- Light weight
- Low Lead
- Modular check design
- Easy to service and install
- Top entry and upward facing testcocks for ease of testing and maintenance.

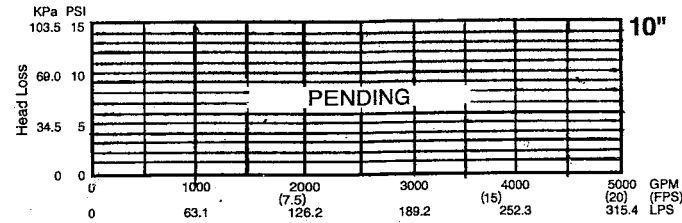
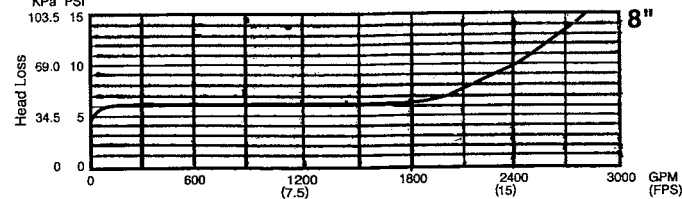
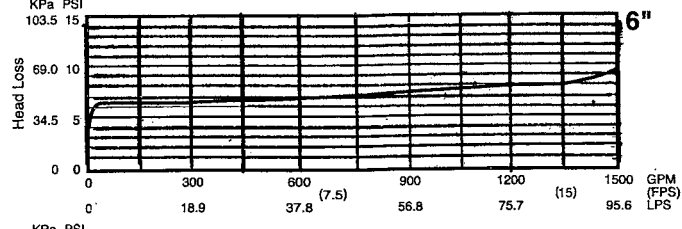
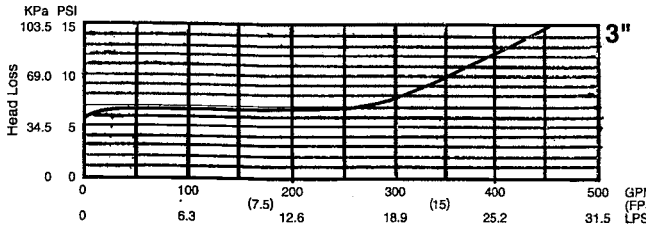
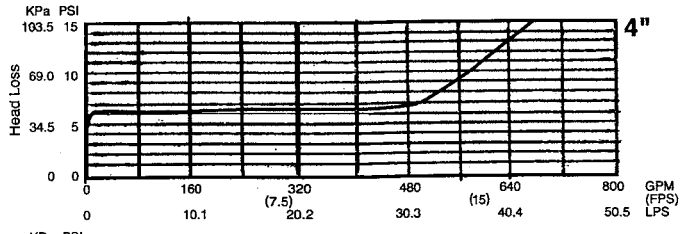
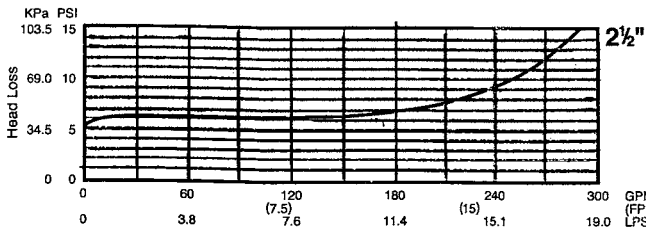
Characteristics and Materials

- Maximum Working Pressure: — 175 PSI (1200 KPa)
- Hydrostatic Test Pressure: — 350 PSI (2400 KPa)
- Temperature Range: — 32°F to 140°F (0°C to 60°C)
- Fluid: — Water
- End Detail: — Flanged ANSI B16.1 Class 125
Din PN-16
AS 2129 Style "E"
(optional) Groove per AWWA
C606 steelpipe size
- Main Valve Body: — Ductile iron ASTM A-536
grade 65-45-12
- Main Valve Trim: — Stainless steel
- Internal Check Modules: — Stainless steel
- Elastomers: — Silicone rubber
- Springs: — Stainless steel
- Shut-Off Valves: — Rubber seated internal butterfly
valves: gear and gear with
tamper switch available.
- Coating: — Fusion epoxy coated internal
and external, AWWA C550-90.



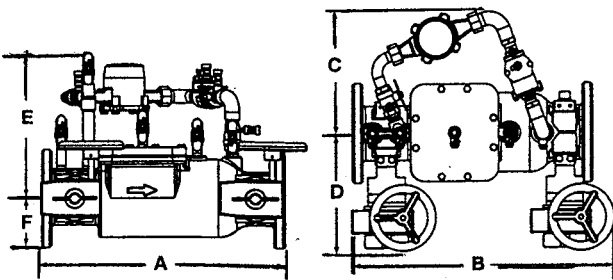
Options

- Gear Operator
- Gear Operator with Tamper Switch

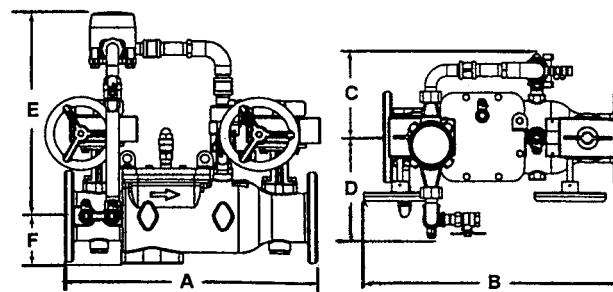


Dimensions and Weights

4" Model 831H



2½", 3", 6", 8", 10" Model 831



U.S. - INCHES						Weight
Size	A	B	C	D	F	(lbs.)
2½"	20	22	7	8¼	17¼	4
3"	20	22	7	8¼	17¼	4
4"	22	24	10⅞	10⅝	13¼	4½
6"	27½	32	11½	8½	16¼	6½
8"	34	35	7⅞	13⅞	15⅝	8
10"	Pending					