

# AMES

## 3000/ DCDA

### SIZE

4", 6", 8", 10"

### DESCRIPTION

This is a double check detector assembly and utilizes an assembly similar to the 2000 series for the main line assembly. Production was begun approximately 1986. The 4" and 6" were discontinued in 1995. The 8" was discontinued in 1998. The 10" was discontinued in 2002. The assembly was produced with several different bypass assemblies. Check the name tag on the bypass assembly to be sure which you have.

### BASIC REPAIR KIT

Main line repair kit contains all check clapper plates, cover gaskets, and mounting bolt washers.

SPECIAL TOOLS			
<u>SIZE</u>	<u>KIT NO</u>	<u>TONG TOOL</u>	<u>RETAINER CLIP</u>
4"	DCART400*	N/A	7013911
6"	DCART600*	N/A	7013912
8"	DCART800*	N/A	7013913
10"	DCART800*	7016090	N/A

Bypass kit contains all disc holder assemblies and O-rings

<u>SIZE</u>	<u>KIT NO</u>
WATTS 007 3/4"	007-RT075
WATTS 007M1 3/4"	007M1-RT075
WATTS 007M2 3/4"	007M2-RT075
AMES 2000B 3/4"	007M2-RT075
AMES 2000BM3 3/4"	007M3-RT075
WATTS 709 3/4"	709-RT075

### IMPORTANT FEATURES

~See Ames model 2000 for main assembly

~For bypass assembly see:

Watts 007 3/4"

Watts 007M1 3/4"

Watts 709 3/4"

Watts 007M2 3/4"

Ames 2000B or M3

~Factory repair information enclosed



# AMES<sup>CO.</sup>

## MODEL 3000 DCDA

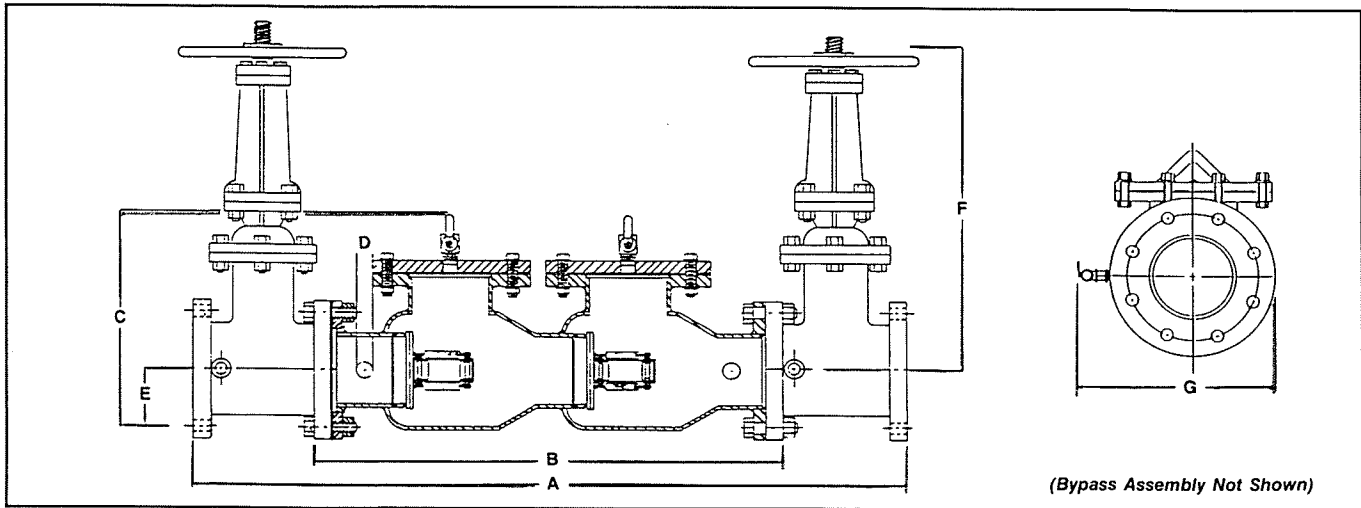
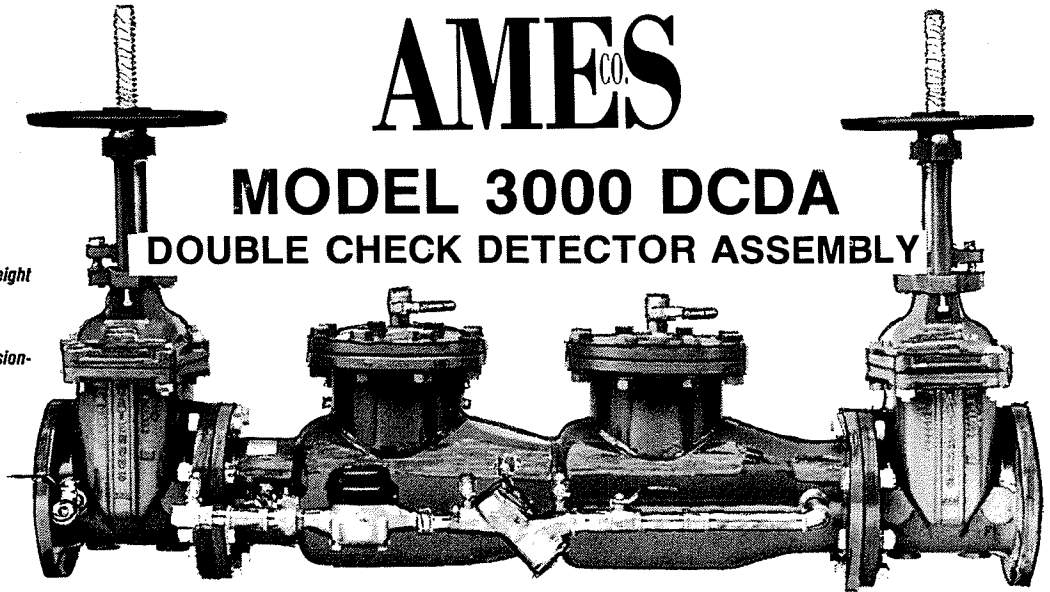
### DOUBLE CHECK DETECTOR ASSEMBLY

#### ■ Features

- Fabricated steel body provides a substantial lighter weight unit than cast or ductile iron.
- Functional in horizontal or vertical positions.
- Available with hot dip zinc galvanized coating or fusion-bonded Ames Guard epoxy coating.

#### ■ Other Specifications

- Unit comes assembled with bypass which includes water meter and backflow prevention assembly. Testcocks are included.
- Rated working pressure 4", 6" 8", 10" (175 PSI)
- Flange dimensions and holes in accordance with AWWA Class D.
- All internal metal parts are 300 series stainless steel with exception of removable bronze seal ring ASTM B62-82.
- Body nameplate provides nominal size, direction of flow, PSI rating and year of manufacture.
- Body material ASTM A36.



Ames 3000 DCDA — Weights & Dimensions (Inches)

Model	Size	A	B	C	D	E	F	G	NET WT with gates	NET WT w/o
3000 DCDA	4"	45 ½	27 ½	17 5/8	¾ NPT	5	23 3/16	15	320 lbs.	120 lbs.
3000 DCDA	6"	58 7/8	37 7/8	20 1/8	¾ NPT	6	29 3/16	17	480 lbs.	180 lbs.
3000 DCDA	8"	68¾	45¾	23 1/8	¾ NPT	7½	37¾	19½	540 lbs.	275 lbs.
3000 DCDC*	10"	83¾	58 1/16"	23 7/8	2 NPT	9¾	48	22	1120 lbs.	345 lbs.

Flow Characteristics (Including Shut-off Valves)

