

# AMES 5000

## SIZE

4", 6", 8", 10"

## DESCRIPTION

This is a reduced pressure detector assembly. Production began approximately 1989 and was discontinued in 2005. It utilizes an assembly similar to the 4000 series for the mainline assembly. The bypass unit used was either the Watts 909 3/4" or Conbraco 40-200 3/4". Check the bypass assembly serial number tag to verify which you have.

## BASIC REPAIR KIT

Mainline repair kit contains all check clapper plates, mounting bolt washers, and check cover gaskets, RV disc, rolling diaphragm, and O'ring.

| <u>SIZE</u> | <u>KIT NO</u> | <u>AIR GAP</u> | <u>SPECIAL TOOLS</u> |                      |
|-------------|---------------|----------------|----------------------|----------------------|
|             |               | <u>DRAIN</u>   | <u>TONG TOOL</u>     | <u>RETAINER CLIP</u> |
| 4"          | RPRT 400 *    | 7011361        | 7016090              | 7013911              |
| 6"          | RPRT 600 *    | 7011361        | 7016090              | 7013912              |
| 8"          | RPRT 800 *    | 7011361        | 7016090              | N/A                  |
| 10"         | RPRT 800 *    | 7011361        | 7016090              | N/A                  |

Bypass repair kit contains all rubber discs or disc holders, diaphragm, and O'rings

| <u>SIZE</u>          | <u>KIT NO</u> | <u>AIR GAP DRAIN</u> |
|----------------------|---------------|----------------------|
| Watts 909 3/4"       | LF909-RT075   | AGC                  |
| Conbraco 40-200 3/4" | 40-004-A4     | 40-200-X1            |

## IMPORTANT FEATURES

~Main line unit see Ames 4000

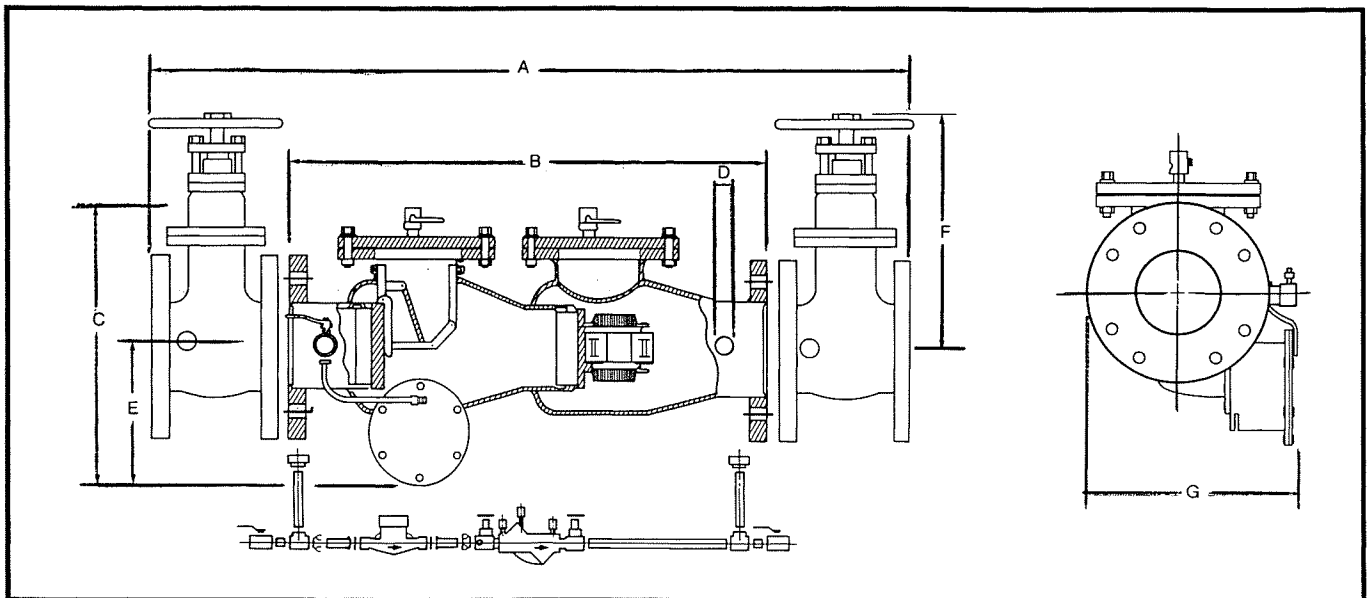
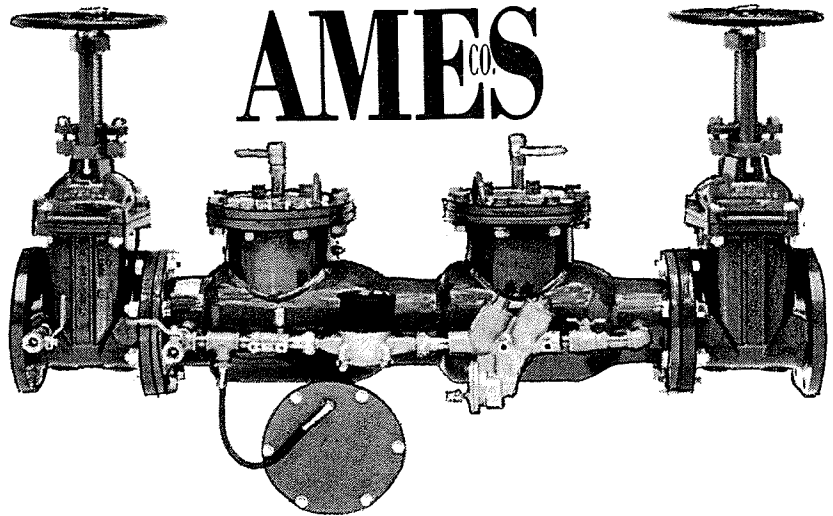
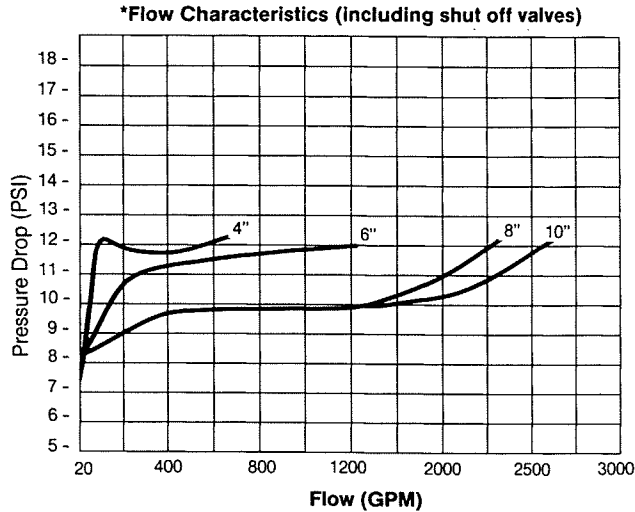
~Bypass see either Watts 909 3/4" or Conbraco 40-200 3/4"

~Factory repair information enclosed



# MODEL 5000 RPDA

## REDUCED PRESSURE DETECTOR ASSEMBLY



**Ames 5000 RPDA Weights & Dimensions (Inches)**

| Model     | Size | A                              | B                              | C                               | D     | E   | F                               | G   | NET WT<br>w/OS & Y gates | NET WT<br>w/o gates |
|-----------|------|--------------------------------|--------------------------------|---------------------------------|-------|-----|---------------------------------|-----|--------------------------|---------------------|
| 5000 RPDA | 4"   | 45½                            | 27½                            | 23 <sup>7</sup> / <sub>16</sub> | ¾ NPT | 9½  | 23 <sup>3</sup> / <sub>16</sub> | 18  | 391 lbs.                 | 157 lbs.            |
| 5000 RPDA | 6"   | 58 <sup>7</sup> / <sub>8</sub> | 37 <sup>7</sup> / <sub>8</sub> | 25½                             | ¾ NPT | 10½ | 29 <sup>3</sup> / <sub>16</sub> | 20  | 564 lbs.                 | 214 lbs.            |
| 5000 RPDA | 8"   | 68¾                            | 45¾                            | 27                              | ¾ NPT | 12  | 37¾                             | 22½ | 910 lbs.                 | 378 lbs.            |
| 5000 RPDA | 10"  | 71¾                            | 45¾                            | 27                              | ¾ NPT | 12  | 48                              | 25  | 1330 lbs.                | 418 lbs.            |

### Features

- Low Head Loss
- One piece body design
- Heavy duty steel body provides a substantially lighter weight unit than cast or ductile iron
- Ames Guard Fusion Bonded Epoxy internally and externally coated
- 300 series stainless steel internal parts.
- Easily removable bronze seat
- Available in sizes 4" - 10"
- Bypass line ¾"
- 175 psi working pressure
- 350 psi hydrostatic test pressure
- Flange dimension and holes in accordance with AWWA Class D
- All internal working parts 300 series stainless steel
- Removeable bronze seat ASTM B62-82
- Body material ASTM A36
- Body nameplate provides nominal size, direction of flow, psi rating, and year of manufacture
- Mainline shutoff valves: UL FM OS & Y Resilient Wedge