

# CONBRACO 40-600/ DCDA-40 SERIES

<u>SIZE</u>	<u>MODEL NO</u>
3"	40-600
4"	40-60A
6"	40-60C
8"	40-60E
10"	40-60G

## DESCRIPTION

This is a double check detector assembly. Production began in 1992 and was discontinued in 2013. It utilizes an assembly similar to the 40-100 design double check for the mainline assembly and the bypass unit. Note each size has a different model number, but they are all in the 40-600 series.

## BASIC REPAIR KIT

Mainline repair kit contains all rubber discs and O-rings

<u>SIZE</u>	<u>KIT NO</u>
3"	40-009-04
4"	40-00A-04
6"	40-00C-04
8"	40-00E-04
10"	40-00G-04

Bypass repair kit contains all rubber discs and O-rings

<u>SIZE</u>	<u>KIT NO</u>
40-100 3/4"	40-004-A6

## IMPORTANT FEATURES

- ~Mainline assembly see 40-100
- ~Bypass assembly see 40-100 3/4"
- ~Factory repair information enclosed



## FEATURES

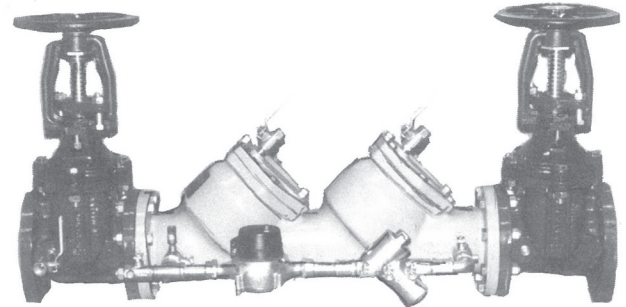
- Corrosion resistant
- Removable bronze seats
- Replaceable discs
- Low head loss
- Economical
- Designed for easy in-line maintenance
- Test cocks for in-line testing
- Maximum Working Pressure 175 PSI
- Operating Temperature Range 33-140°F

## MATERIALS

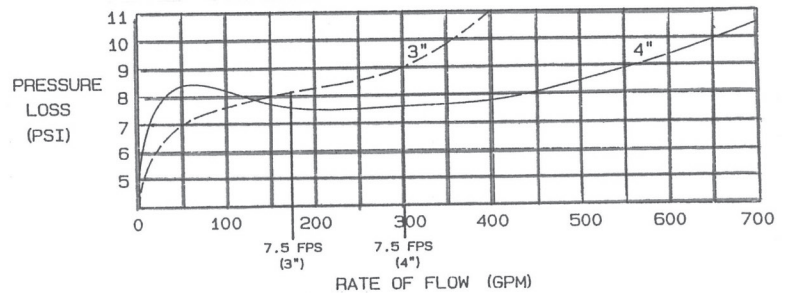
1. Body	- FDA Approved epoxy coated ductile iron (mainline) - Bronze (by-pass)
2. By-pass components	- Bronze
3. Springs	- Stainless Steel (both)
4. Seats	- Bronze (both)
5. Discs	- EPDM (mainline) - Silicone (by-pass)
6. Fasteners	- Stainless Steel (both)
7. Test cocks	- Bronze (both)

## Double Check Detector Assembly

Sizes 3" — 4"

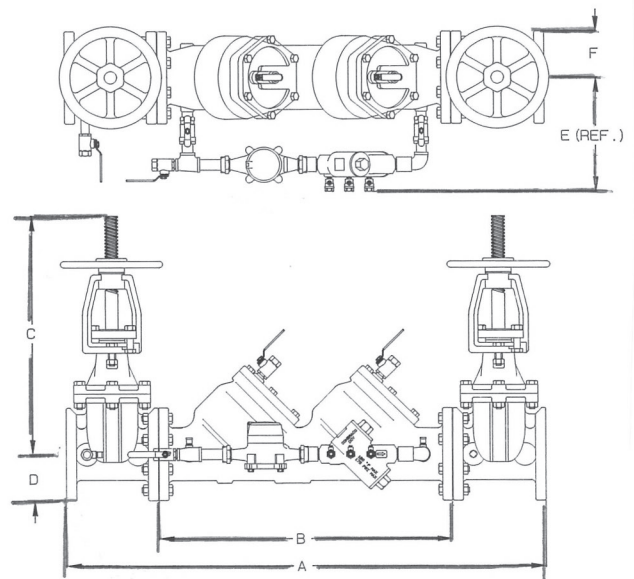


**FLOW CURVES**



## DIMENSIONS (in.)—WEIGHTS (lbs.)

Size	3"	4"
A	38-1/16	46-3/4
B	22-1/16	28-3/4
C (OS & Y) OPEN	22-1/16	23-3/16
D	3-3/4	4-1/2
E	9-1/4	10-1/2
F	3-3/4	4-1/2
Test Cocks (line)	1/2" NPT	1/2" NPT
Test Cocks (by-pass)	1/4" NPT	1/4" NPT
Net Wt. (Less Gate Valves)	97	161
Net Wt. (With OS & Y Valves)	234	367
Shipping Wt. (Less Gate Valves)	161	225
Shipping Wt. (With OS & Y Valves)	298	431



## FEATURES

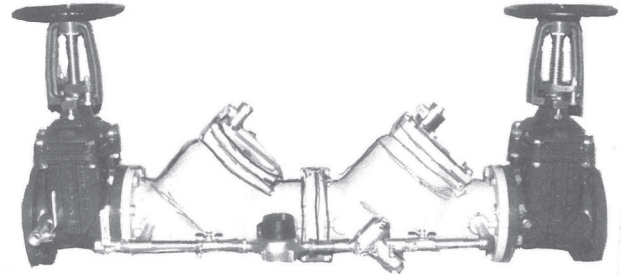
- Corrosion resistant
- Removable bronze seats
- Replaceable discs
- Low head loss
- Economical
- Designed for easy in-line maintenance
- Test cocks for in-line testing
- Maximum Working Pressure 175 PSI
- Operating Temperature Range 33-140°F

## MATERIALS

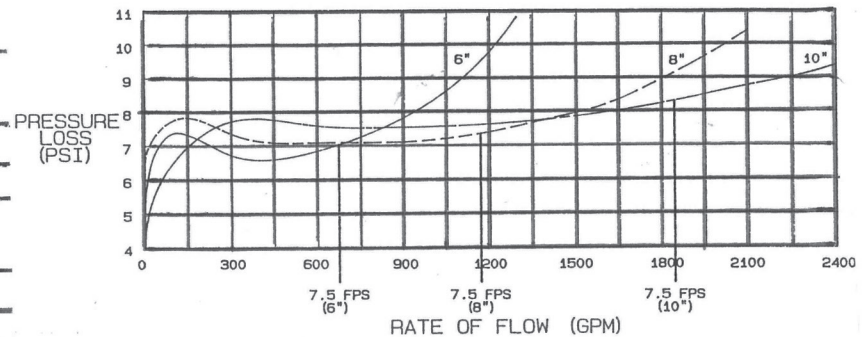
- |                       |   |
|-----------------------|---|
| 1. Body               | - FDA Approved epoxy coated ductile iron (mainline)<br>- Bronze (by-pass) |
| 2. By-pass components | - Bronze  |
| 3. Springs            | - Stainless Steel (both)  |
| 4. Seats              | - Bronze (both)   |
| 5. Discs              | - EPDM (mainline)<br>- Silicone (by-pass)                                 |
| 6. Fasteners          | - Stainless Steel (both)  |
| 7. Test cocks         | - Bronze (both)   |

## Double Check Detector Assembly

Sizes 6" — 8" — 10"



### FLOW CURVES



## DIMENSIONS (in.)-WEIGHTS (lbs.)

Size	6"	8"	10"
A	63	75	88-1/4"
B	42	52	62-1/16"
C (OS & Y) OPEN	30-1/8	37-3/4	48
D	5-1/2	6-3/4	8
E	13-1/4	14-3/4	17-1/2
F	5-1/2	6-3/4	8
Test cocks (line)	3/4" NPT	3/4" NPT	3/4" NPT
Test cocks (by-pass)	1/4" NPT	1/4" NPT	1/4" NPT
Net Wt. (less gate valves)	409	647	1364
Net Wt. (with OS & Y valves)	733	1142	2207
Shipping Wt. (less gate valves)	507	817	1534
Shipping Wt. (with OS & Y valves)	831	1312	2377

