

# CONBRACO

## 4D-100/DC-4D SERIES

### SIZE

2 1/2", 3", 4", 6", 8", 10"

### DESCRIPTION

This is a double check assembly. Production began in 2003 and was discontinued in 2009. The body is fusion epoxy coated ductile iron. A single access cover on the top is attached with a grooved coupler. Springs are contained when the cover is removed. The modular check mechanism is made of stainless steel and is bolted into the body. The check uses a silicone disc. The check assembly utilizes four springs to achieve a proper loading.

### BASIC REPAIR KIT

Repair kit contains discs and O'rings.

#### SIZE

2 1/2"-4"

6"

8-10"

#### KIT NO

4D-100-30 \* ◆

4D-100-60 \* ◆

4D-100-80 \* ◆

### IMPORTANT FEATURES

- ~ *Modular check*
- ~ *Contained springs*
- ~ *Factory repair information enclosed*



# 'Apollo' Valves

## THE DEFENDER 4D-100 SERIES

### MATERIALS

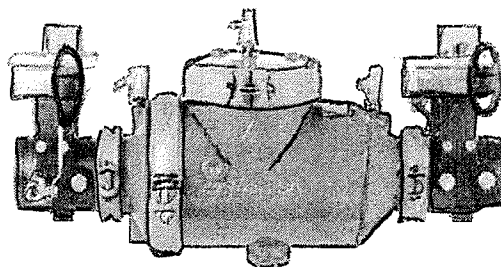
Body & Cover	—	Fusion Bonded Epoxy Coated Ductile Iron
Test Cocks	—	Stainless Steel
Check Components	—	Stainless Steel
Springs	—	Stainless Steel
Seat Discs	—	Silicone Rubber
Fasteners	—	Stainless Steel
Elbows	—	Fusion Bonded Epoxy Coated Ductile Iron

### FEATURES

- Lead Free
- Stainless Steel checks for Superior Durability
- Corrosion Resistant
- Replaceable Silicone Rubber Seat Discs
- Low Head Loss
- Economical
- Short Lay Length
- Light Weight
- Designed For Easy Maintenance
- Maximum Working Pressure 175 PSI
- Operating Temperature Range 33°-140°F
- U.S. Patent #6,443,184 B1 (other patents pending)

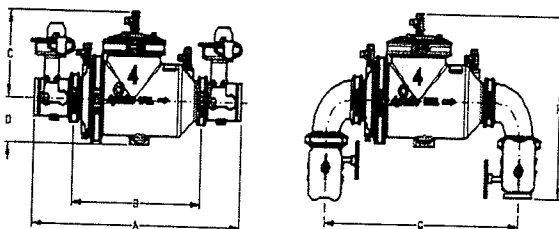
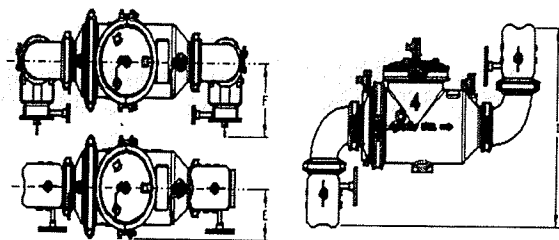
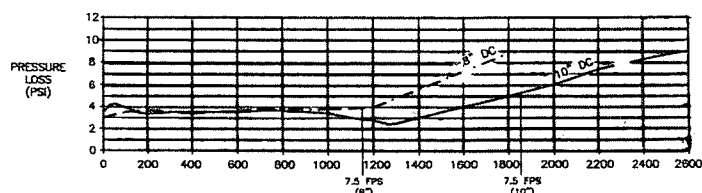
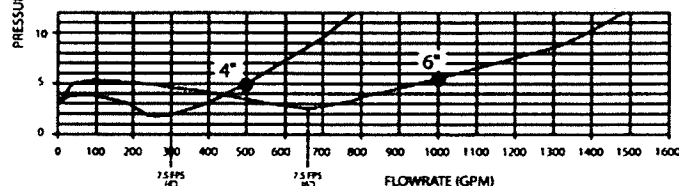
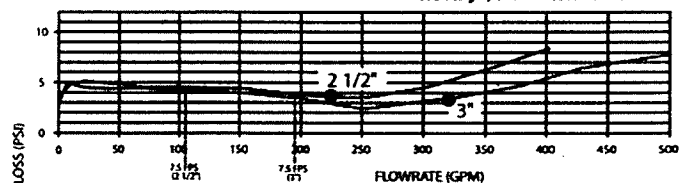
### DOUBLE CHECK VALVE ASSEMBLY

Sizes 2 1/2" - 3" - 4" - 6"



MODEL 4D-100 SERIES  
Flow Curves with Butterfly Valves

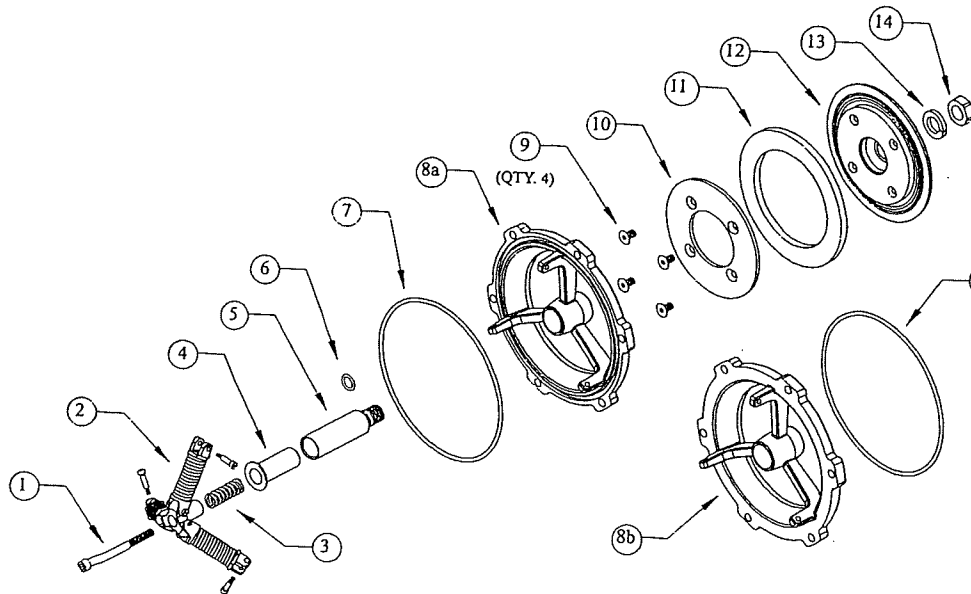
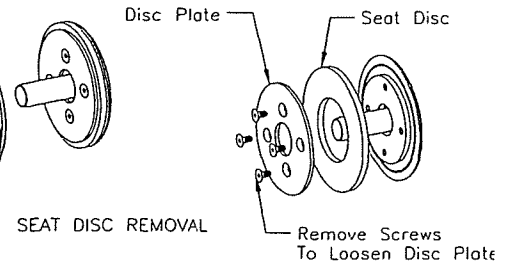
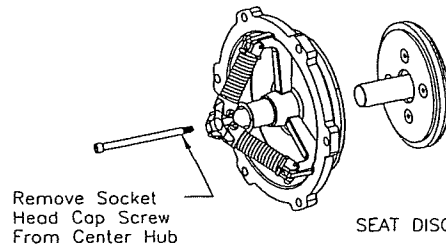
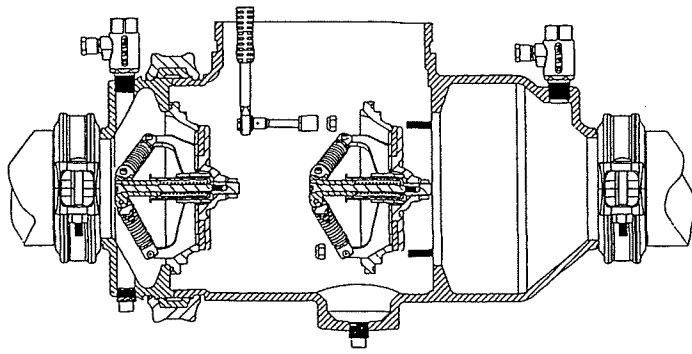
(\*) Rated flow as determined by ASSE design performance standards.



'Apollo' Valves

Size	Dimensions (in) - Weights (lbs.)					
	2 1/2"	3"	4"	6"	8"	10"
A (Butterfly Valves)	33 3/8	33 7/8	35	38 1/2	48	52 1/2
A (Gate Valves)	35 1/2	37 1/2	39 7/8	45 5/8	55	59
B	21 3/8	21 3/8	21 3/8	24 1/2	32	32
C (With Butterfly Valves)	10 5/8	10 5/8	10 5/8	13	15	15
C (OS&Y Valves Open)	17	19	22 3/4	30 1/8	38	46
D	6 1/2	6 1/2	6 1/2	7 1/2	10	10
E (center to edge w/out elbows)	6 1/2	6 1/2	6 1/2	7 3/4	10	10
F (w/Elbows & Butterfly Valves)	8	8 1/2	9 1/4	10 1/4	12 3/4	14 1/2
F (w/Elbows & OS&Y Vlv OPEN)	27 1/4	28 1/4	29 3/4	34 1/4	38	46
G	27 3/8	28 1/8	29 3/4	35 1/2	46	50 1/4
H "U" Flow (with Butterfly Valves)	20 3/8	21 1/8	22 3/8	26 1/2	29 3/4	34
H "U" Flow (with OS&Y Valves)	21 7/8	22 7/8	24 5/8	30	33 1/2	37 1/4
I "Z" Flow (with Butterfly Valves)	19 1/2	21	23 1/4	27	30	38
I "Z" Flow (with OS&Y Valves)	22 1/2	24 1/2	28	34	37	44 1/4
Test Cocks	1/2 NPT	1/2 NPT	1/2 NPT	3/4 NPT	3/4 NPT	3/4 NPT
Net Wt. (Less Gate Valves)	99	100	105	188	396	401
Net Wt. (w/Butterfly Valves)	122	124	154	251	518	583
Net Wt. (w/OS&Y Valves)	209	239	320	511	752	1165
Net Wt. (w/Elbows & Butterfly Vlv)	131	136	174	288	560	691
Net Wt. (w/Elbows & OS&Y Valves)	218	252	340	549	794	1273
Shpg. Wt. (Less Gate Valves)	163	164	179	286	472	477
Shpg. Wt. (w/Butterfly Valves)	189	191	221	359	594	659
Shpg. Wt. (w/OS&Y Valves)	276	306	387	619	875	1288
Shpg. Wt. (w/Elbows & Butter Vlv)	198	203	241	396	660	791
Shpg. Wt. (w/Elbows & OS&Y Vlv)	285	349	407	657	894	1373

# 4D -100 Series 2 1/2-6"



ITEM	DESCRIPTION
1	Screw, Socket Head Cap
2	Kit, Joint Assembly, DC
3	Spring, Center, DC
4	Sleeve, Stem
5	Stem, Check
6	O-Ring (stem)
7	O-Ring (seat)
8a	Seat, First Check, Mach.
8b	Seat, Second Check, Mach.
9	Screw, Flat Head Hex Drive
10	Plate, Disc, Mach.
11	Disc, Seat
12	Retainer, Seal, Mach.
13	Washer
14	Nut, Jam