

WATTS 995RPDA

SIZE

3", 4", 6"

DESCRIPTION

This is a reduced pressure principle detector assembly. Production began in 1999 and was discontinued in 2003. The Watts Regulator Company purchased the Ames Company in 1997. Watts began marketing the Ames 5001 SS as the Watts 995 RPDA. The mainline assembly is similar to the Watts 995. The bypass assembly is similar to the Watts 009 M3 3/4".

BASIC REPAIR KIT

Mainline repair kit contains discs, diaphragms, and O-rings.

<u>SIZE</u>	<u>KIT NO</u>
3"-4"	995-RT300 ◆
6"	995-RT600 ◆

Bypass repair kit contains discs, diaphragm, and O-rings.

<u>SIZE</u>	<u>KIT NO</u>
3/4"	009M3-RT075

IMPORTANT FEATURES

- ~Mainline assembly similar to the Watts 995
- ~Bypass assembly similar to the Watts 009M3
- ~Factory repair information enclosed



Series 995RPDA

Reduced Pressure Detector Assembly

Sizes: 3" - 6" (80 - 150mm)

MATERIALS

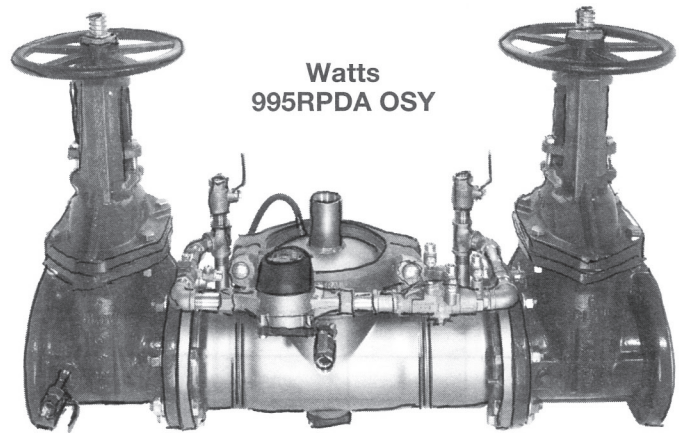
All internal metal parts: 300 Series stainless steel
 Main valve body: 300 Series stainless steel
 Check assembly: Noryl
 Flange dimension in accordance with AWWA Class D

PRESSURE - TEMPERATURE

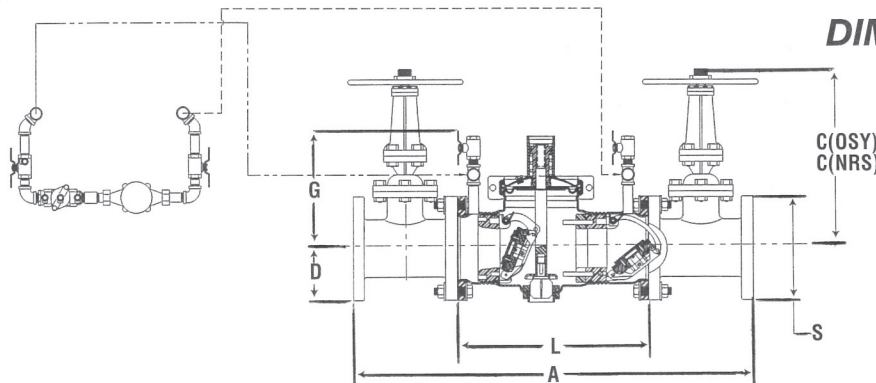
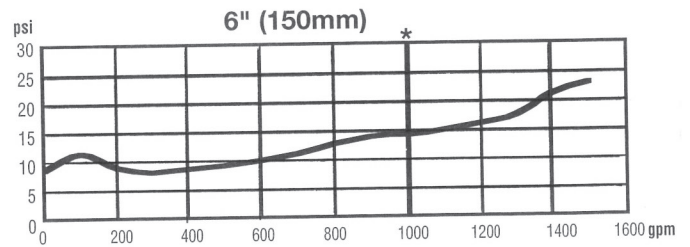
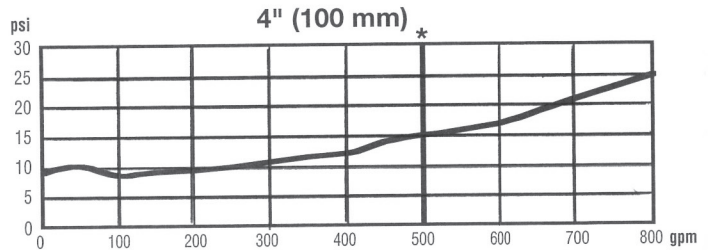
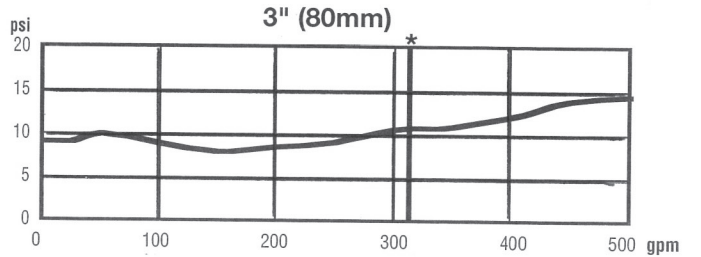
Suitable for supply pressures up to 175 psi (12.1 bars) and water temperature to 140°F (60°C) continuous.

FEATURES

- 40% shorter lay length for low installation cost-ideal for retrofit and enclosure installations.
- Light weight stainless steel body reduces handling and shipping costs versus cast iron valves.
- Patented DynaFloat™ torsion spring check valve minimizes head loss and includes "edge protection" to prevent wear of the disc rubber due to back pressure.
- Center-loaded stainless steel center pivot arm distributes check valve spring load evenly for repeatable trouble free operation.
- Stainless steel body provides long term corrosion protection and maximum strength, eliminates need for epoxy coatings and the associated voids and pin holes.
- Threaded-in check modules, no need for retaining wires and difficult to remove clips.
- Reversible check disc rubber.
- Single top access cover with two bolt grooved style coupling for ease of maintenance.
- Stainless steel and thermoplastic check valve construction for corrosion resistance.
- No special tools required for servicing.
- In-line relief valve reduces installation clearance requirements.
- Lead free body is 60% lighter than competitive designs.
- Bulkhead-mounted relief valve seat allows for simple removal.
- Dia-Seal™ relief valve design minimizes parts and reduces maintenance time.
- Furnished with GPM or CFM meter.
- Detects underground leaks and unauthorized water use.



Watts
995RPDA OSY

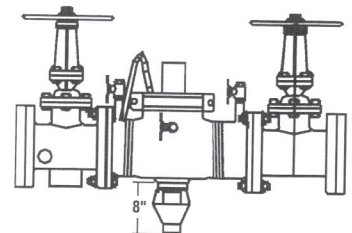


DIMENSIONS - WEIGHT (approximate)

Size in. mm	A		C (OSY)		C (NRS)		D		G		L		S		Net Weight w/Gates		Net Weight w/o Gates		
	in.	mm	in.	mm	in.	mm	in.	mm	in.	mm	in.	mm	in.	mm	lb.	kg.	lb.	kg.	
3	80	36 1/8	918	18 3/8	479	12 3/8	314	3 3/4	95	13 1/4	337	20	508	7 1/2	191	205	93	58	26
4	100	34 3/8	879	22 3/4	578	14 3/4	375	4 1/2	114	13 3/4	337	16 1/2	419	9	229	270	122	57	26
6	150	43 3/8	1108	30 1/8	765	19	483	5 1/2	140	15	381	22 1/2	572	11	279	420	191	99	45

Air Gap Assembly

Model 995AG 3" - 6"



Watts product specifications in U.S. customary units and metric are approximate and are provided for reference only. Watts reserves the right to change or modify product design, construction, specifications, or materials without prior notice and without incurring any obligation to make such changes and modifications on Watts products previously or subsequently sold.