

ROCKWELL 701

SIZE

1 1/2", 2", 2 1/2", 3", 4", 6"

DESCRIPTION

The Rockwell 701 is a reduced pressure assembly. It was produced from approximately 1972-1978. It is a bronze body unit. Check and relief valve seats are replaceable. Check springs are not contained when the check covers are removed. Most internal hardware parts are made of bronze. The unit utilized an external relief valve sensing line. The relief valve could be removed from the check body.

BASIC REPAIR KIT

The repair kit contains all rubber discs, gaskets, O'rings, rollers, belloframs, and washers.

<u>SIZE</u>	<u>KIT NO</u>
1 1/2"	701-204 *◆
2"	701-204 *◆
2 1/2"	701-304 *◆
3"	701-304 *◆
4"	701-404 *◆
6"	701-604 *◆

IMPORTANT FEATURES

~ *Bronze body*

~ *Replaceable seats*

~ *Check springs are not contained*

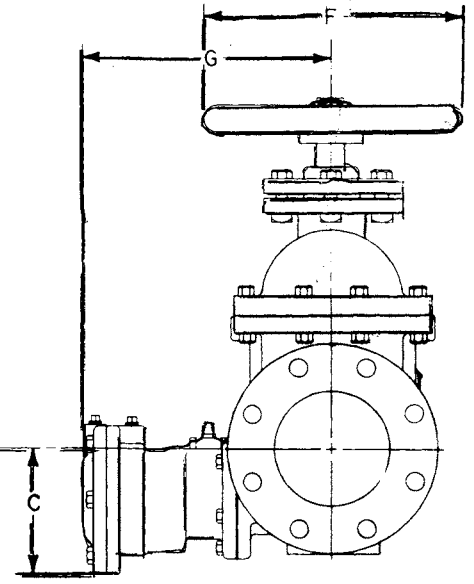
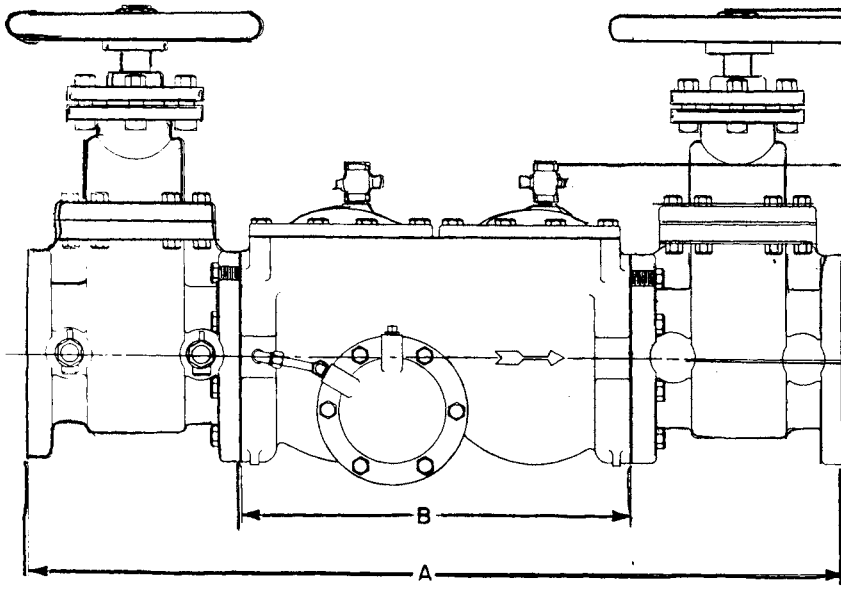
~ *External RV sensing line*

~ *Detachable relief valve*

~ *Factory repair information available*



SPECIFICATIONS

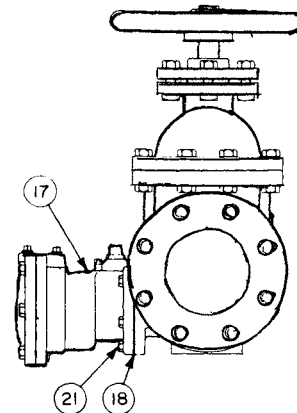
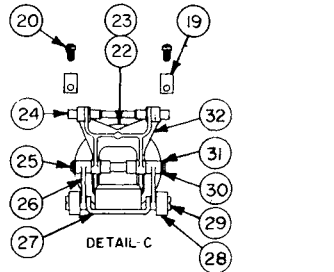
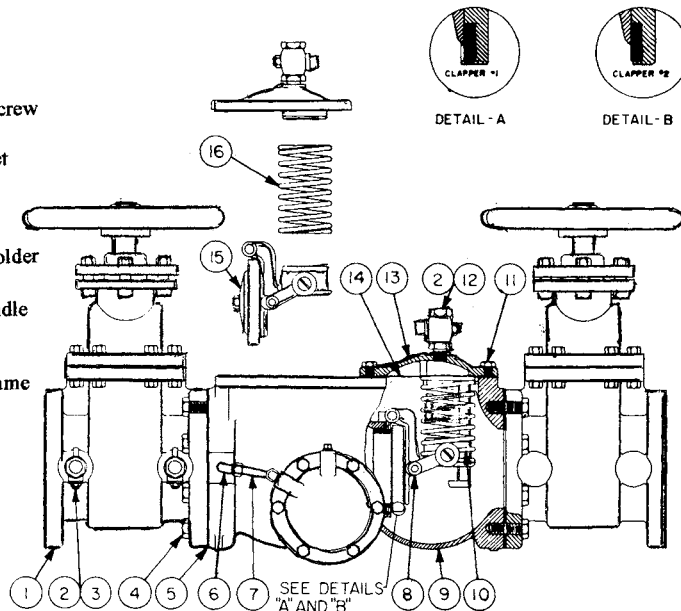


SIZE (IN.)	1½	2	2½	3	4	6	8	10
A	25¼	30¼	35					
B	11	14	16½					
C	3¾	4½	5½					
D	6¾	8	9¼					
E	11	12¾	15½					
F	6	8	11					
G	7¾	10¼	10¾					
WT. WITHOUT VALVES (LB.)	60	110	155					
WT. WITH VALVES (LB.)	135	255	375					

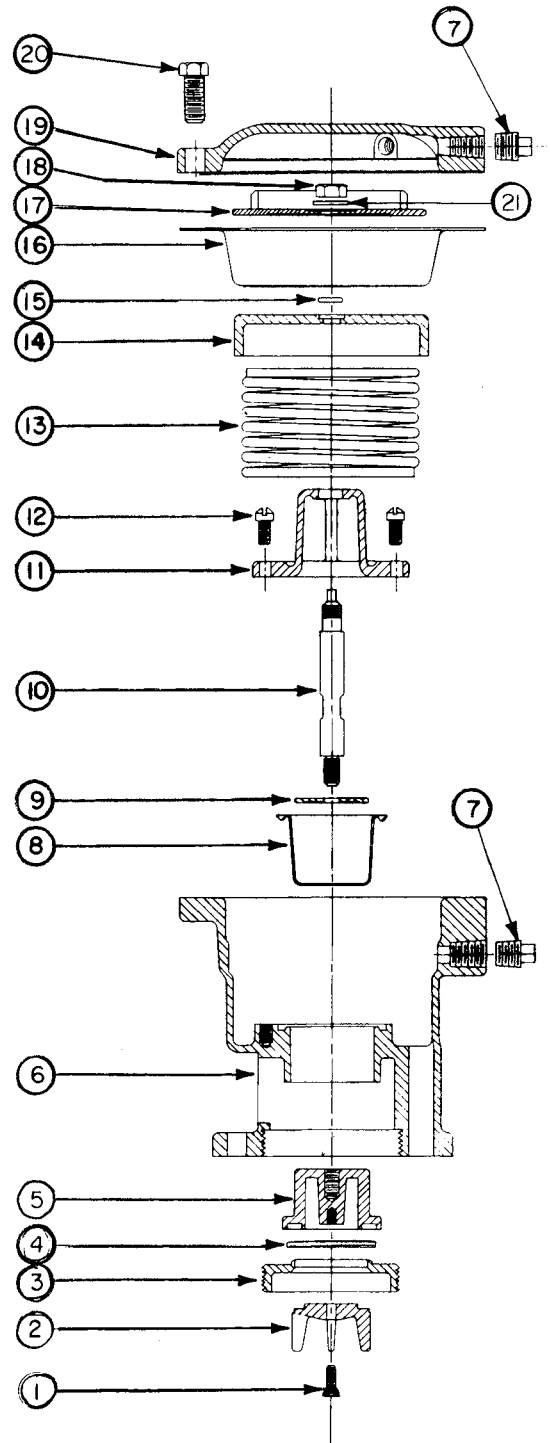
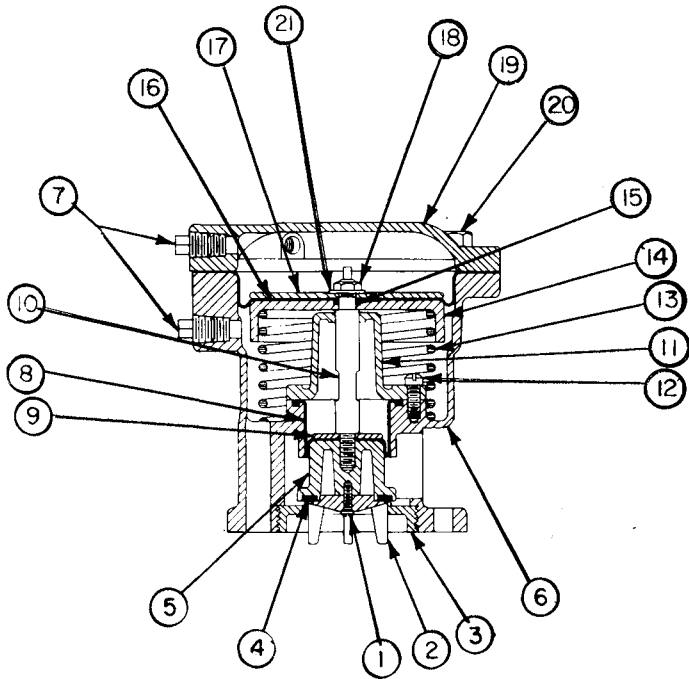
FLOW CHARACTERISTICS		
SIZE (IN.)	RATE (GPM.)	HEAD LOSS (PSI)
1½	100	
2	160	11.0
2½	225	
3	320	11.1
4	500	9.9
6	1000	
8	1600	
10	2300	

WORKING PRESSURE—150 PSI
 HYDROSTATIC TEST PRESS.—300 PSI
 MAXIMUM TEMP.—150°F

- 1 Shut Off
- 2 Nipple
- 3 Test Cocks
- 4 Bolt
- 5 Gasket
- 6 Fitting
- 7 RV Sensing Line
- 8 Ck Assy
- 9 Ck Body
- 10 Ck Spring
- 11 Bolt
- 12 Test Cock
- 13 Ck Cover
- 14 Ck Cover Gskt
- 15 Ck Assy
- 16 Ck Spring
- 17 RV Assy
- 18 Gasket
- 19 Ret Plate
- 20 Ret Plate Screw
- 21 Bolt
- 22 -23 Spg Ret
- 24 Pin
- 25 Pin
- 26 Ck Link
- 27 Ck Disc Holder
- 28 Roller
- 29 Roller Spindle
- 30 Washer
- 31 Ret Ring
- 32 Control Frame



DIFFERENTIAL PRESSURE RELIEF VALVE



ITEM	REQ.	NAME	ITEM	REQ.	NAME
1	1	CLAMPING RING SCREW	13	1	SPRING
2	1	CLAMPING RING	14	1	PISTON
3	1	VALVE SEAT	15	1	"O" RING
4	1	FACING RING	16	1	DIAPHRAGM
5	1	VALVE BODY	17	1	RETAINER PLATE
6	1	VALVE HOUSING	18	1	JAM NUT
7	2	PIPE PLUG	19	1	COVER PLATE
8	1	DIAPHRAGM	20	6	COVER BOLT
9	1	RETAINER PLATE	21	1	WASHER
10	1	SHAFT			
11	1	SHAFT GUIDE			
12	4	SHAFT GUIDE SCREW			