

# TORO 80-0060

# TORO 9-2780

<u>SIZE</u>	<u>MODEL NO</u>
3/4"	80-0060
1"	9-2780

## DESCRIPTION

These are double check assemblies. They were produced from approximately 1969-1977. It was redesigned and replaced by the Toro Model BDC. Note there is a different model number for each size. This assembly uses a vertical piping configuration where water goes in the bottom and comes back down out of the bottom. The body was made of bronze. The check assemblies had a plastic modular construction. Check seats are replaceable. All springs are contained when the cover is removed.

## BASIC REPAIR KIT

Repair kit contains first and second check modules and all O'rings.

<u>SIZE</u>	<u>KIT NO</u>
3/4"-1"	900-46 * ◆

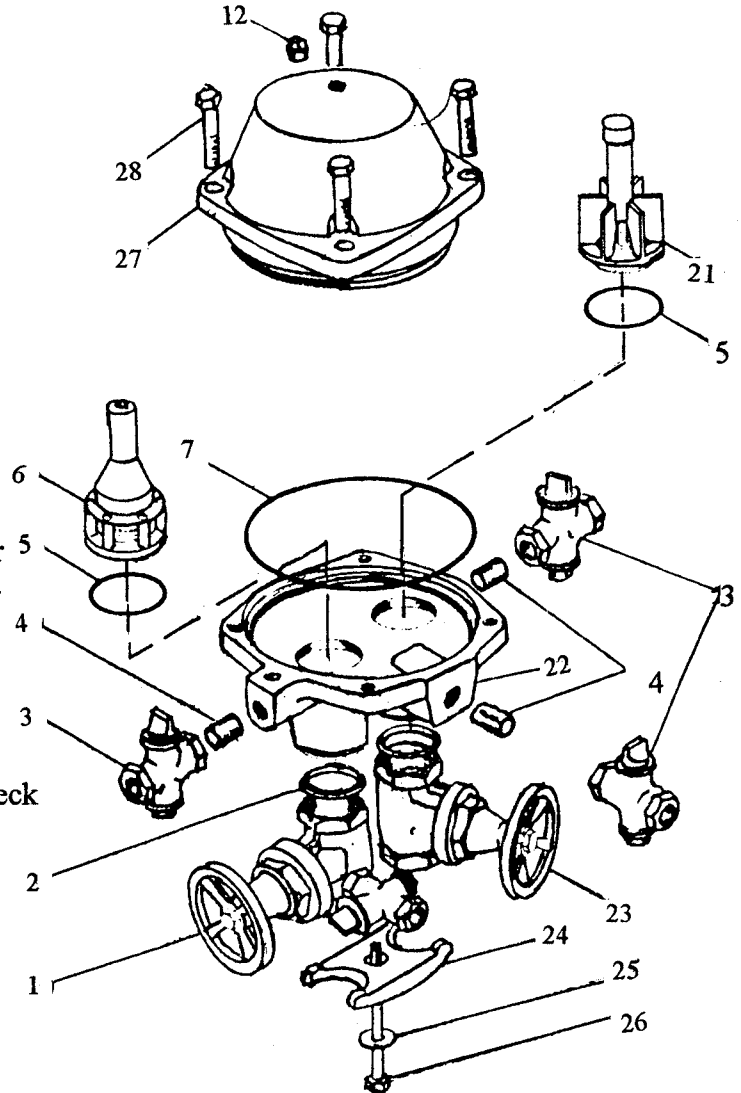
## IMPORTANT FEATURES

~ *Bronze body*

~ *Replaceable check seats*

~ *Contained springs*

~ *Factory repair information available*



1 #1 Shut Off	21 #2 Shut Off
2 Gasket	22 Base
3 Test Cock	23 #2 Shut Off
4 Nipple	24 Clamp
5 O'Ring	25 Washer
6 #1 Ck Assy	26 Bolt
7 O'Ring	27 Cover
12 Plug	28 Bolt

