

VIKING A-1

SIZE

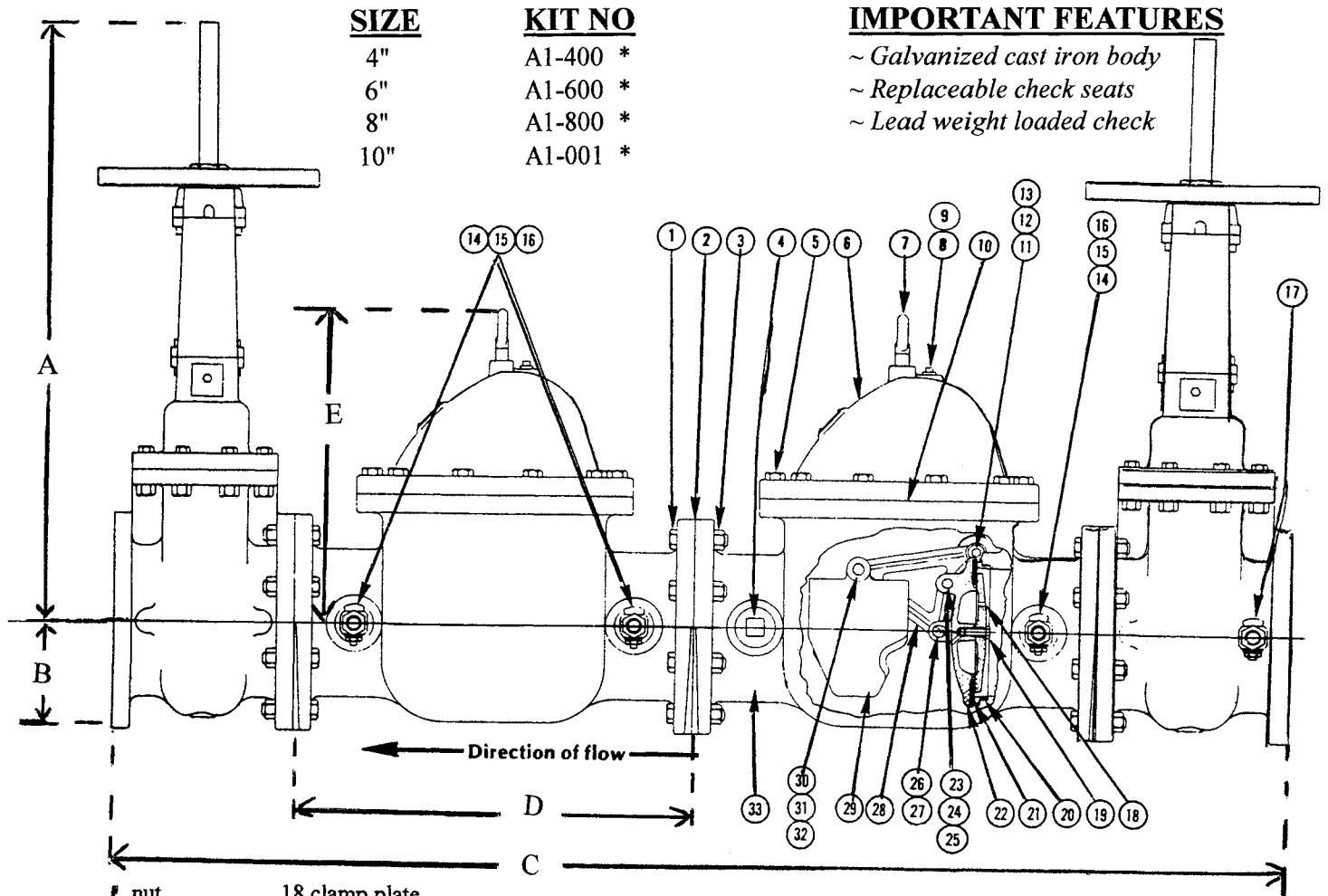
4", 6", 8", 10"

DESCRIPTION

The Viking Model A-1 is a double check backflow assembly produced from approximately 1977 to 1989. The body is galvanized cast iron. The check seats were replaceable. A seat removal tool is needed to change the seats. It was a lead weight loaded swing check device. Most internal parts were made of bronze.

BASIC REPAIR KIT

The repair kit contains all rubber discs and cover gaskets.



SIZE

4"
6"
8"
10"

KIT NO

A1-400 *
A1-600 *
A1-800 *
A1-001 *

IMPORTANT FEATURES

- ~ Galvanized cast iron body
- ~ Replaceable check seats
- ~ Lead weight loaded check

- 1 nut
- 2 gasket
- 3 bolt
- 4 plug
- 5 bolt
- 6 cover
- 8 screw
- 9 washer
- 10 gasket
- 11 pivot shaft
- 12 washer
- 13 ret ring
- 14 plug
- 15 bushing
- 16 test cock
- 17 test cock
- 18 clamp plate
- 19 screw
- 20 seat
- 21 disc
- 22 disc holder
- 23 hinge pin
- 24 pin ring
- 25 pin
- 26 pin
- 27 pin ring
- 28 clapper arm
- 29 weight
- 30 pin
- 31 pin ring
- 32 pin
- 33 body

	A	B	C	D	E
4"	24 1/2"	4 1/2"	51"	16 1/2"	13 3/4"
6	33 3/4"	5 1/2"	66"	22 1/2"	18 1/4"
8"	42 1/4"	6 3/4"	73"	25"	20 3/8"
10"	49"	8"	82"	28"	22 1/4"

Flow— gpm	FRICTION LOSS IN PSI			
	4" Valve	6" Valve	8" Valve	10" Valve
100	2.75	—	1.81	1.48
200	2.50	1.86	1.54	1.42
300	2.50	1.81	1.45	—
350	—	—	—	1.36
500	2.70	1.66	1.39	1.38
600	2.95	1.68	1.36	—
700	2.65	1.68	1.36	1.22
800	4.75	1.68	1.40	1.23
1000	7.50	1.81	1.46	1.27
1200	10.90	2.01	1.44	—
1400	—	2.36	1.64	1.14
1600	—	2.86	1.64	1.13
1800	—	—	1.72	—
2350	—	—	1.80	—



20-1

Individual check valves of paired assembly