

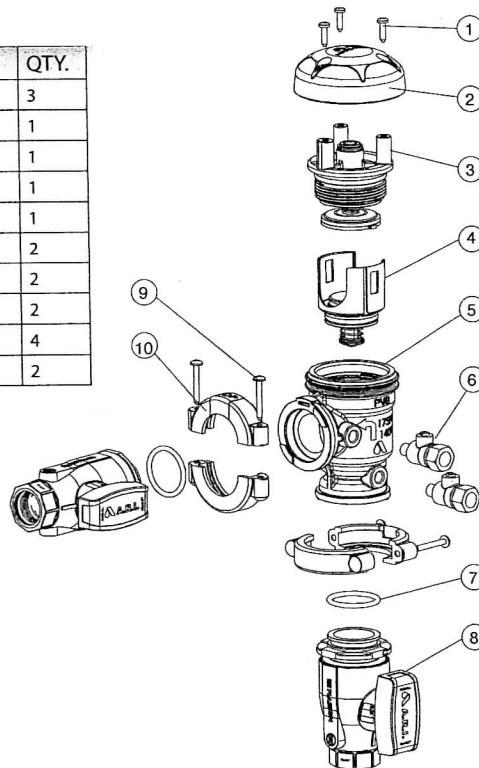
## Drain Procedure for Freeze Protection

1. Turn off main shut-off (a) that supplies water to the system.
2. Open both inlet and outlet drain valves in the system (b&g). Open inlet and outlet shut-off valves on the pressure vacuum breaker (c&f) and all of the test cocks. Leave all valves and test cocks in the half open/half closed (45°) position to allow full drainage of the ball valves and test cocks.
3. If you "blow out" the system downstream of the pressure vacuum breaker, make sure the outlet drain valve (g) is open and the pressure vacuum breaker shut-off valve (f) is closed.
4. Connect an air hose to the outlet drain valve (g) and inject an adequate volume of air to remove all water from the downstream portion of the system.
5. CAUTION: Open outlet shut-off valve to the pressure vacuum breaker (f) and outlet drain valve (g) to the half open/half closed (45°) position after "blow out" process is completed.
6. If drain valves (b&g) are not part of the system, and if air pressure is not used to "blow out" the system, the internal components of the pressure vacuum breaker should be removed for the duration of the winter.
7. Leave all drain valves (b&g), shut-off valves (c&f) and test cocks in the half open/half closed position (45°) for the duration of the winter to prevent freezing. Caution: Be certain that main shut-off (a) remains tightly closed to prevent refilling of the system. Also, the main shut-off valve must be resilient seated to insure no leakage of water into the system.

## Maintenance

1. Close inlet No.1 and outlet No.2 shut-off valves before disassembling device.
2. Remove cover screws counterclockwise and remove cover.
3. Bleed off pressure by opening the No.2 test cock.
4. Unscrew the Vent Assembly from the body by turning counterclockwise.
5. Clean all parts with clean water only.
6. After completing inspection, replace necessary parts and reassemble. Repair kits are available from your supplier.
7. Retest according to "TEST PROCEDURES".

ITEM	PART	MATERIAL	QTY.
1	Cover Bolts	STST 304	3
2	Cover	PP	1
3	Vent Assy.	*	1
4	Check Valve Assy.	**	1
5	Body	Reinforced PA	1
6	Test Cock	Brass	2
7	O-ring	NBR	2
8	Ball Valve	Reinforced PA	2
9	Band Bolts	STST 304	4
10	Band Assy.	Reinforced PA	2



*Vent Assembly			
1.1	Seat	Reinforced PA	1
1.2	Piston	Acetal	1
1.3	Seal	EPDM	1
1.4	Sleeve	Reinforced PA	1
1.5	Plug	Acetal	2
1.6	Spring	AISI 302	1

**Check Valve Assembly			
2.1	Seat	Acetal	1
2.2	Seal	EPDM	1
2.3	O-ring	NBR	3
2.4	Spring	AISI 302	1
2.5	Piston	Acetal	1

**A.R.I. USA, Inc.** A.R.I. FLOW CONTROL ACCESSORIES Ltd. [www.ariusa.com](http://www.ariusa.com) [ariusa@ariusa.com](mailto:ariusa@ariusa.com) Tel: 877-536-6201

A.R.I. FLOW CONTROL ACCESSORIES Ltd. reserves the right to make product changes without prior notice. To insure receiving updated information on parts specifications, please call the export dept. at the A.R.I. factory. A.R.I. FLOW CONTROL ACCESSORIES Ltd. shall not be held liable for any errors. All rights reserved.