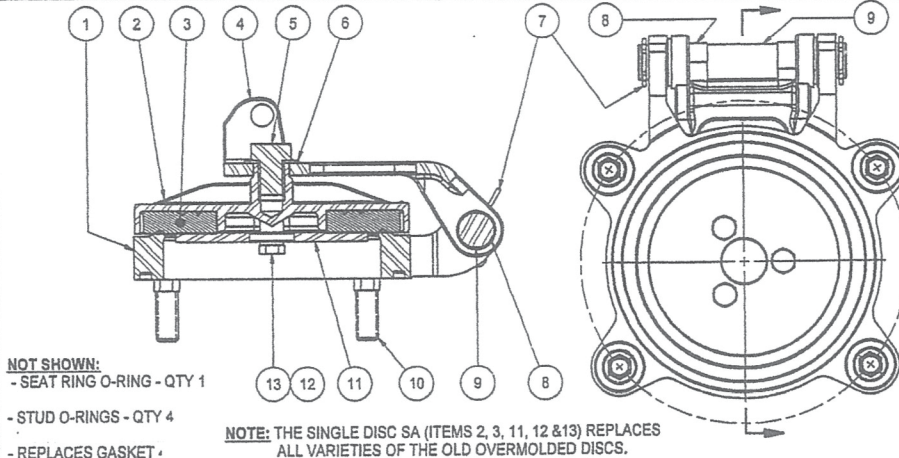
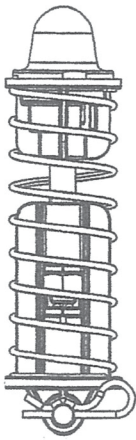


Check Valve Service Procedures (2 1/2"-10") for (2 1/2"-10") LF850, LF 870V, LF856, LF876V



NOT SHOWN:
- SEAT RING O-RING - QTY 1
- STUD O-RINGS - QTY 4
- REPLACES GASKET *

NOTE: THE SINGLE DISC SA (ITEMS 2, 3, 11, 12 & 13) REPLACES ALL VARIETIES OF THE OLD OVERMOLDED DISCS.

Check Mechanism

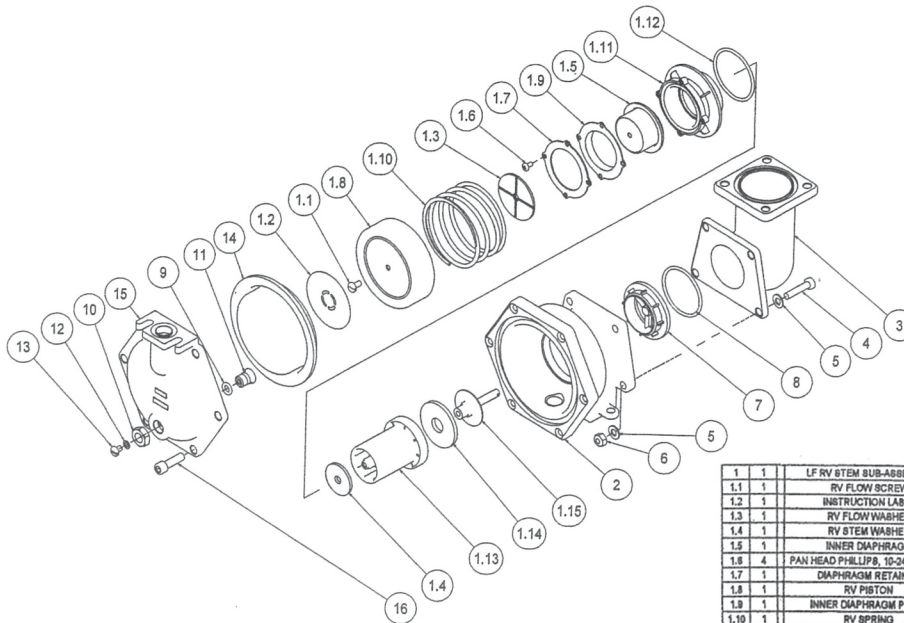
| PARTS LIST | |
|------------|---------------------------------|
| ITEM | DESCRIPTION |
| 1 | SEAT RING 2-1/2" & 3" |
| 2 | DISC HOLDER 2-1/2" & 3" |
| 3 | DISC 2-1/2" & 3" |
| 4 | ARM 2-1/2" & 3" |
| 5 | HHCS 3/8-16UNC-2Bx.50 |
| 6 | WASHER, .375 ID X .75 OD X .041 |
| 7 | HAIRPIN CLIP |
| 8 | BUSHING-SWING PIN |
| 9 | SWING PIN |
| 10 | HEX STUD 5/16-18 x 1-1/4 |
| 11 | DISC RETAINER 2-1/2" & 3" |
| 12 | #10 SPLIT LOCK WASHER |
| 13 | HH MACH SCREW #10-24UNCx3/8 |

Check Valve Disassembly

1. Close the outlet shutoff valve, then close the inlet shutoff valve. Bleed residual pressure from the assembly by opening the #4, #3, and #2 test cocks in this sequence.
2. Remove the cover bolts/nuts and lift the cover from the body. The springs are retained and the cover should be pushed away from the body approximately 1/4 inch.

3. Inspect/clean debris from the disc and seat ring. Replace worn or damaged parts as required.
4. Replace the cover, ensure the spring assembly is positioned in the pivot socket. If necessary, apply FDA approved grease to the O-ring groove in the body to keep the O-ring in position while installing the cover.
5. Install the bolts and nuts and tighten.

Relief Valve Service Procedures (2 1/2"-10") for LF860, LF 880V, LF866, LF886V



Relief Valve Disassembly

1. Remove the capscrews holding the cover to the relief valve body, and remove the cover.
2. Remove the diaphragm and pull the internal assembly from the body. It may be helpful to push the internal assembly with your fingers through the discharge opening.
3. Inspect for debris, damage or fouling of the seat disc. Clean or replace parts as required. Reassemble in the reverse order of disassembly.

| | | |
|------|-----|------------------------------------|
| 1 | 1 | LF RV STEM SUB-ASSEMBLY |
| 1.1 | 1 | RV FLOW SCREW |
| 1.2 | 1 | INSTRUCTION LABEL |
| 1.3 | 1 | RV FLOW WASHER |
| 1.4 | 1 | RV STEM WASHER |
| 1.5 | 1 | INNER DIAPHRAGM |
| 1.6 | 4 | PAN HEAD PHILLIPS, 10-24 x .375 LG |
| 1.7 | 1 | DIAPHRAGM RETAINER |
| 1.8 | 1 | RV PISTON |
| 1.9 | 1 | INNER DIAPHRAGM PLATE |
| 1.10 | 1 | RV SPRING |
| 1.11 | 1 | RV UPPER GUIDE |
| 1.12 | 1 | O-RING -228 |
| 1.13 | 1 | RV MAINSTEM |
| 1.14 | 1 | RV SEAT DISC |
| 1.15 | 1 | RV LOWER GUIDE |
| 2 | 1 | RV BODY |
| 3 | 1 | RV ELBOW 90° |
| 4 | 4 | 5/16-18 X 1-1/2 HH-B |
| 5 | 8 | 5/16 FLAT WASHER TYPE A |
| 6 | 4 | 5/16-18 UNC ELASTIC STOP NUT |
| 7 | 1 | RV SEAT RING |
| 8 | 1 | O-RING -228 |
| 9 | 2 | O-RING -224 |
| 10 | 2 | HEX NUT |
| 11 | 2 | RV DRAIN PLUG BLEEVE |
| 12 | 2 | GASKET |
| 13 | 2 | PAN HD SCREW |
| 14 | 1 | OUTER DIAPHRAGM |
| 15 | 1 | RV COVER |
| 16 | 8 | BHCS 3/8-16 X 1.25 |
| ITEM | QTY | DESCRIPTION |

INSTALLATION INSTRUCTIONS

LF860, LF866, LF880V, LF886V

Relief Valve
Size: 2 1/2" - 10"

WARNING



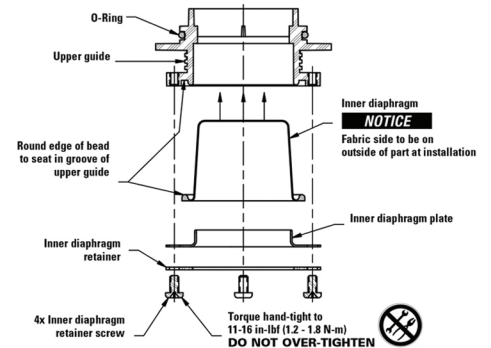
**THINK
SAFETY
FIRST**

Read this Manual **BEFORE** using this equipment.
Failure to read and follow all safety and use information can result in death, serious personal injury, property damage, or damage to the equipment.
Keep this Manual for future reference.

Proper installation of FEBCO Relief Valve Inner Diaphragm into the Relief Valve Upper Guide for Models LF860, LF866, LF880V, LF886V

NOTICE

Failure to install inner diaphragm in this method will result in the inner diaphragm bursting after installation.



FEBCO