

# MUELLER H9505

## SIZE

4", 6", 8", 10"

## DESCRIPTION

This is a double check assembly. This unit was produced from approximately 1975-1989. The assembly has a cast iron check body. Check springs are contained when the covers are removed. Check seats are replaceable. A seat removal tool is needed to change the seats. The body had a painted epoxy coating to inhibit rust. The serial number is needed to order some repair parts.

## BASIC REPAIR KIT

Repair kit contains all cover gaskets, rubber discs, and disc retainer bolts

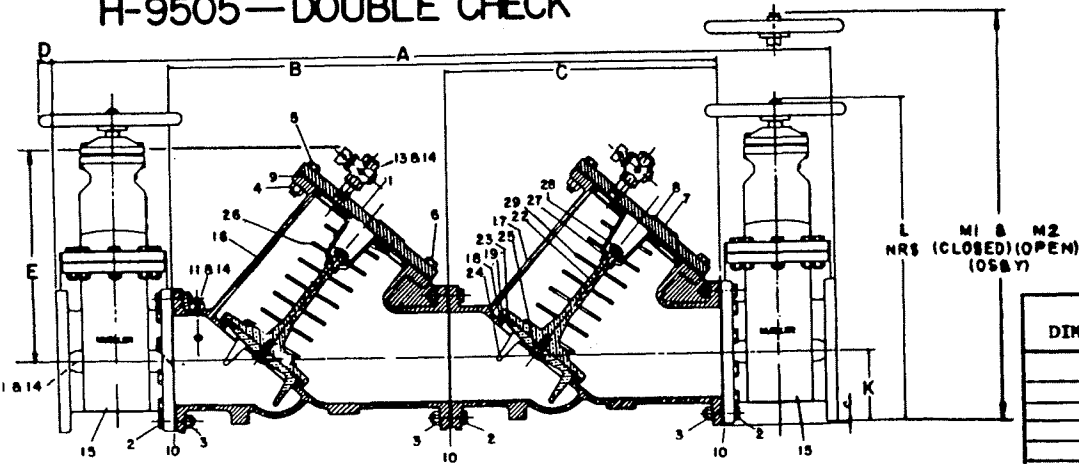
<u>SIZE</u>	<u>KIT NO</u>
4"	282424 ♦
6"	282425 ♦
8"	282426 ♦
10"	282427 ♦

## IMPORTANT FEATURES

- ~Cast iron body*
- ~Painted epoxy check body coating*
- ~Contained springs*
- ~Replaceable seats*
- ~Factory repair information available*



# H-9505—DOUBLE CHECK

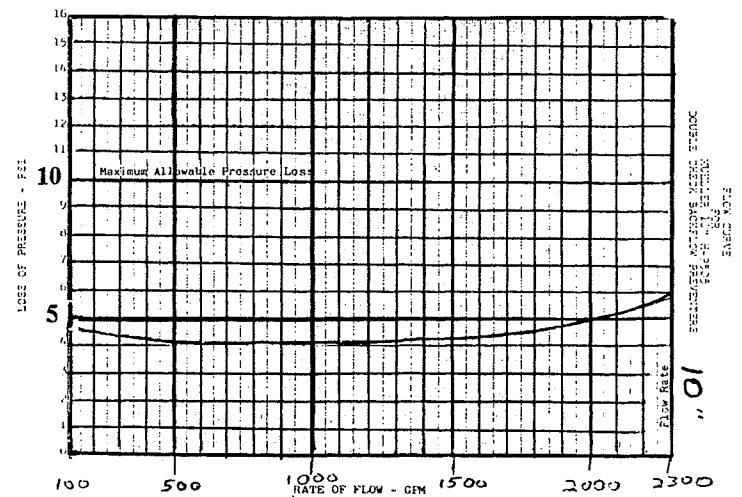
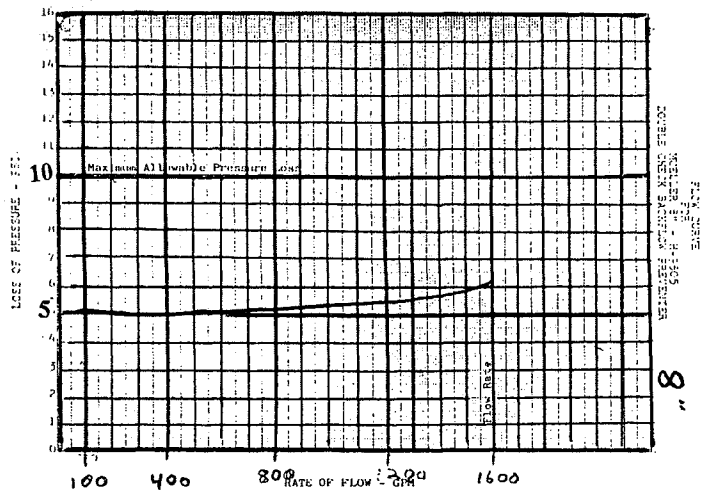
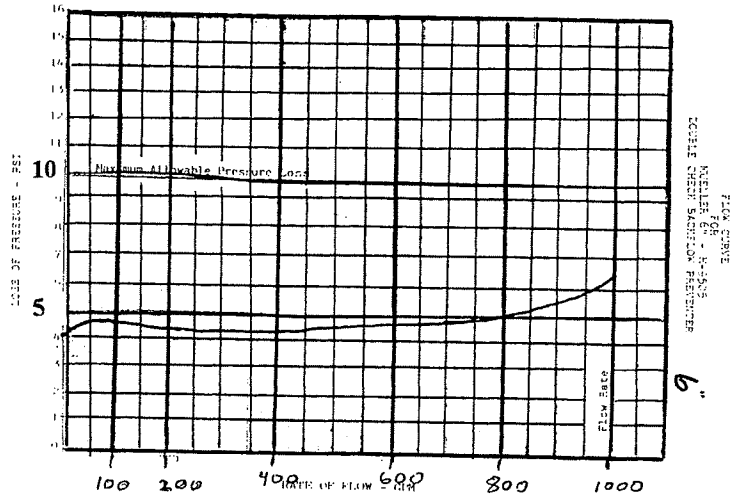
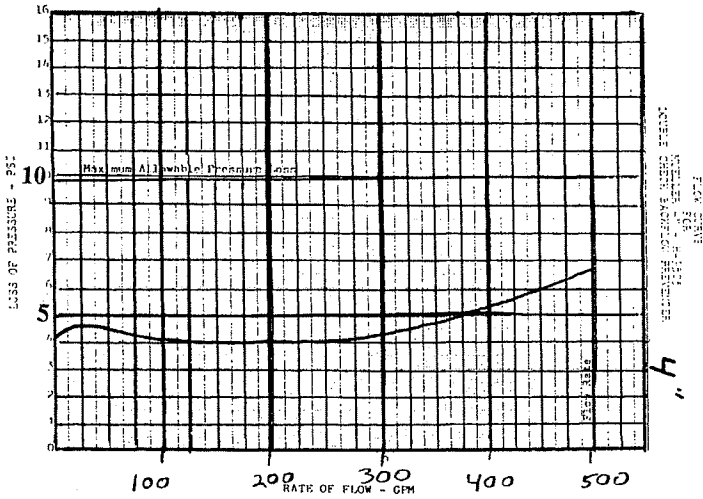


- 1 cover
- 2 bolt
- 3 nut
- 4 nut
- 5 bolt
- 6 bolt
- 7 nameplate
- 8 nameplate screw
- 9 gasket
- 10 gasket
- 11 nipple
- 13 nipple
- 14 test cock
- 15 shut off
- 16 #1 body
- 17 #2 body
- 18 o'ring
- 19 seat
- 22 disc holder
- 23 disc
- 24 guide
- 25 bolt
- 26 #1 ck spring
- 27 spring retainer
- 28 nut
- 29 #2 ck spring

L M1 & M2  
NRS (CLOSED) (OPEN)  
(OSBY)

DIMENSION	SIZE			
	4"	6"	8"	10"
A	55.19	64.19	80.19	88.19
B	37.06	43.06	57.06	62.06
C	18.50	21.50	28.50	31.00
D	1.00	1.25	1.25	1.50
E	13.19	15.81	18.50	21.47
F	10.85	11.90	13.03	13.78
G	7.68	8.73	9.86	10.60
H	14.53	14.53	14.53	14.53
J	.25	.25	.25	.25
K	4.50	5.50	6.75	8.00
L	20.81	25.62	30.00	36.38
M1	26.22	32.00	39.94	47.12
M2	30.84	38.68	48.69	57.88

ALL DIMENSIONS IN INCHES



# MUELLER H9506

## SIZE

4", 6", 8", 10"

## DESCRIPTION

This assembly is a reduced pressure assembly. This unit was produced from approximately 1975-1989. The assembly has a cast iron check body. The relief valve is a double diaphragm design with a bronze body. All seats are replaceable. A seat removal tool is needed to replace the check seats. The check springs are contained when the cover is removed. The check body was coated with a painted epoxy to inhibit rust. The relief valve utilized an internal relief valve sensing line. The relief valve could be removed from the check body. The serial number is needed to order some repair parts.

## BASIC REPAIR KIT

Repair kit contains all check cover gaskets, rubber discs, RV diaphragms, O-rings, and screws.

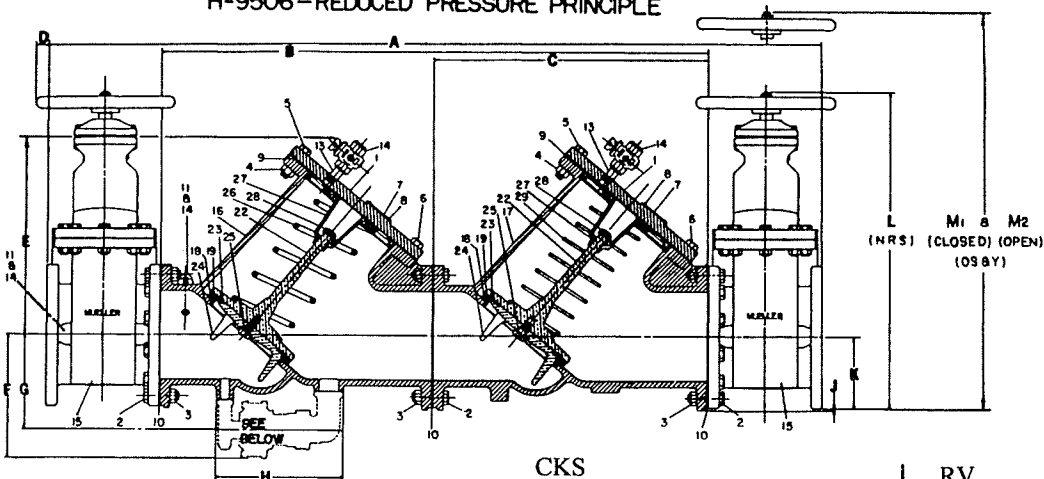
<u>SIZE</u>	<u>KIT NO</u>
4"	9506400 * ♦
6"	9506600 * ♦
8"	9506800 * ♦
10"	9506001 * ♦

## IMPORTANT FEATURES

- ~Cast iron body
- ~Painted epoxy check body coating
- ~Contained spring
- ~Replaceable seats
- ~Relief valve is detachable
- ~Internal RV sensing line
- ~Factory repair information available



# H-9506-REDUCED PRESSURE PRINCIPLE



DIMENSION	SIZE			
	4"	6"	8"	10"
A	55.19	64.19	80.19	88.19
B	37.06	43.06	57.06	62.06
C	18.50	21.50	28.50	31.00
D	1.00	1.25	1.25	1.50
E	13.19	15.01	18.50	21.47
F	10.85	11.90	13.03	13.78
G	7.68	8.73	9.86	10.60
H	14.53	14.53	14.53	14.53
J	.25	.25	.25	.25
K	4.50	5.50	6.75	8.00
L	20.81	25.62	30.00	36.38
M1	26.22	32.00	39.94	47.12
M2	30.84	38.66	48.69	57.88

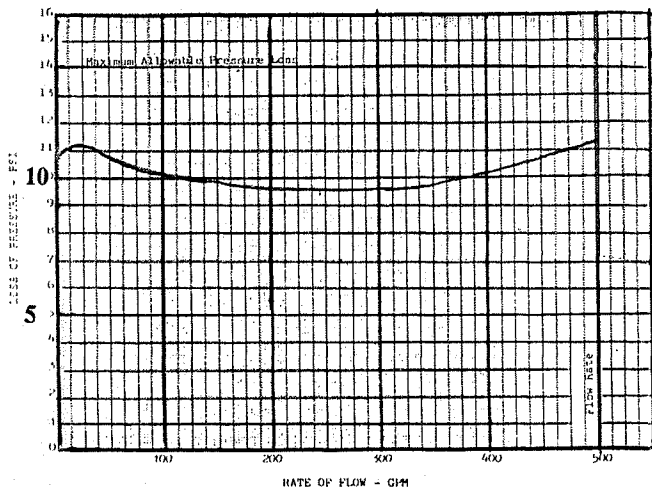
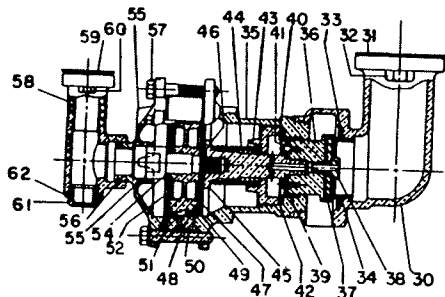
ALL DIMENSIONS IN INCHES

## CKS

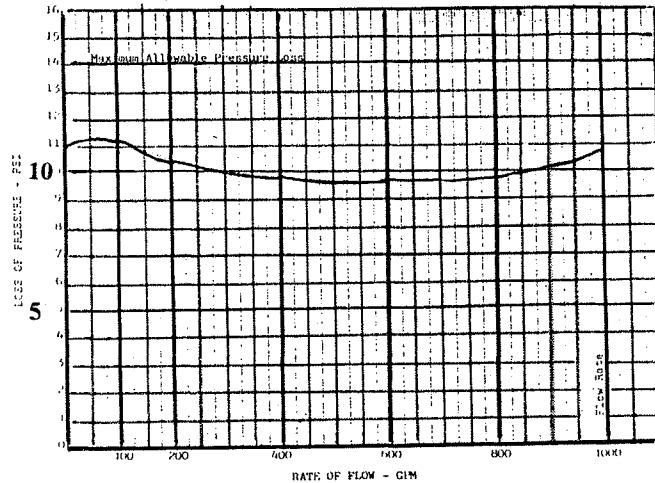
- 1 cover
- 2 bolt
- 3 nut
- 4 nut
- 5 bolt
- 6 bolt
- 7 nameplate
- 8 nameplate screw
- 9 gasket
- 10 gasket
- 11 nipple
- 13 nipple
- 14 test cock
- 15 shut off
- 16 #1 body
- 17 #2 body
- 18 o'ring
- 19 seat
- 22 disc holder
- 23 disc
- 24 guide
- 25 bolt
- 26 #1 ck spring
- 27 spring retainer
- 28 nut
- 29 #2 ck spring

## RV

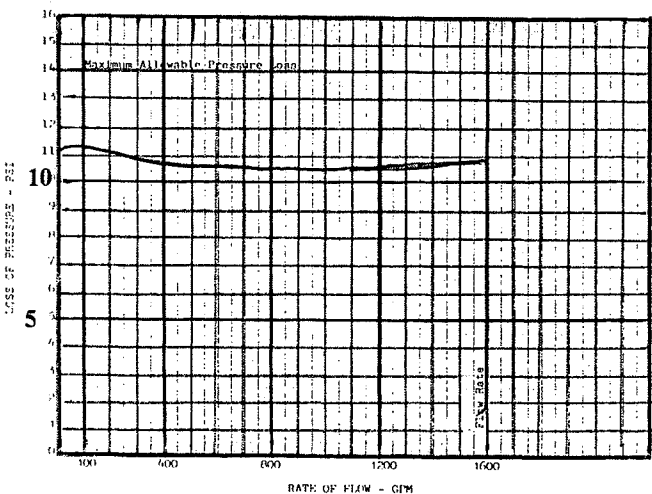
- 30 body
- 31 gasket
- 32 screw
- 33 seat
- 34 o'ring
- 35 body
- 36 piston-small
- 37 seat
- 38 screw
- 39 bellofram sm
- 40 ret plate
- 41 screw
- 42 washer
- 43 nut
- 44 spring
- 45 shaft spring
- 46 o'ring
- 47 ret plate
- 48 bellofram
- 49 piston lg
- 50 spacer ring
- 51 bellofram
- 52 ret plate
- 54 o'ring
- 55 cap
- 56 o'ring
- 57 screw
- 58 body
- 59 gasket
- 60 screw
- 61 cap drain
- 62 gasket



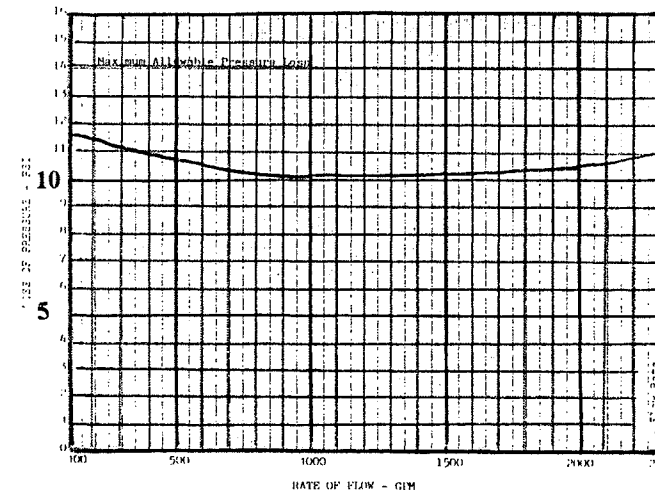
4



6



8



10