

TORO 80-0059

TORO 9-2770

SIZE MODEL NO

3/4"	80-0059
1"	9-2770

DESCRIPTION

These models are reduced pressure assemblies. They were produced from approximately 1969-1977. It was redesigned and replaced by the Toro Model BRP. Note there is a different model number for each size. This model uses a vertical piping configuration where water goes in the bottom and comes back down out of the bottom. The body was made of bronze. The internal check and relief assemblies are modular and are made of plastic. The check and relief valve seats are replaceable. All springs are contained when the cover is removed. The relief valve had an external RV sensing line.

BASIC REPAIR KIT

Repair kit contains first, second, and relief valve module, diaphragm, O'rings, and diaphragm nut.

<u>SIZE</u>	<u>KIT NO</u>
3/4"-1 "	900-45 *◆

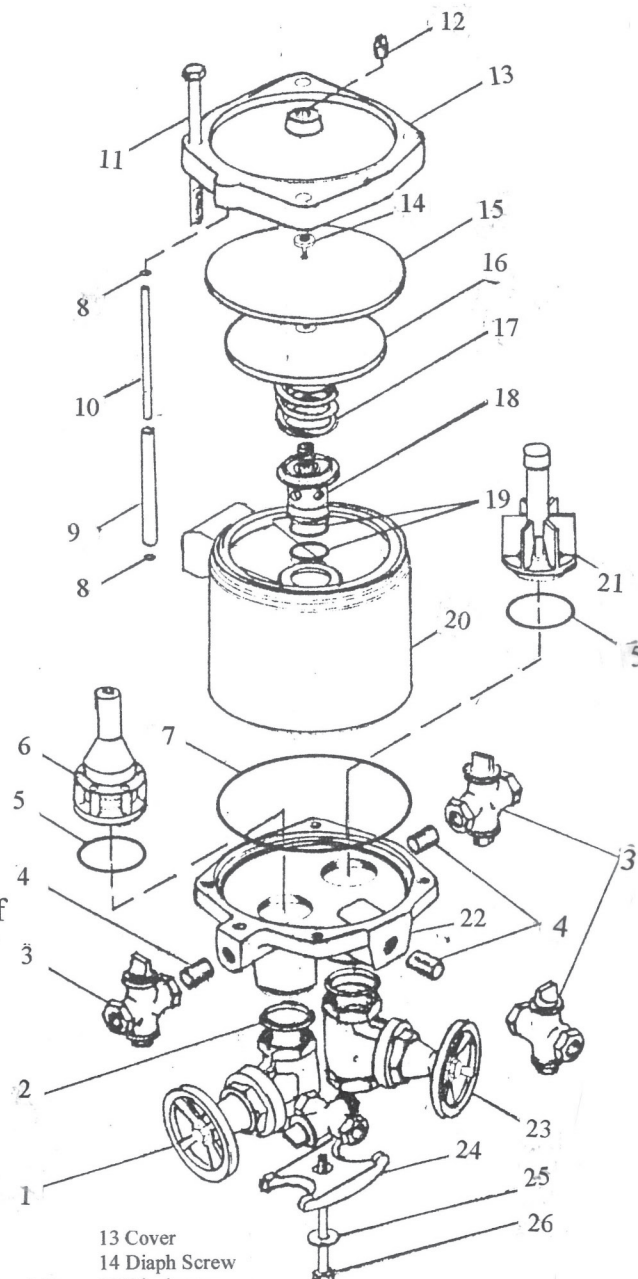
IMPORTANT FEATURES

~ Bronze body

~ Replaceable check seats

~ Contained spring

~ External relief valve sensing line



- | | |
|---------------|------------------|
| 1 #1 Shut Off | 13 Cover |
| 2 Gasket | 14 Diaph Screw |
| 3 Test Cock | 15 Diaphragm |
| 4 Nipple | 16 Diaph Support |
| 5 O'Ring | 17 RV Spring |
| 6 #1 Ck Assy | 18 RV Assy |
| 7 O'Ring | 19 O'Ring |
| 8 O'Ring | 20 Body |
| 9 Outer Tube | 21 #2 Ck Assy |
| 10 Inner Tube | 22 Body |
| 11 Bolt | 23 #2 Shut Off |
| 12 Plug | 24 Clamp |
| | 25 Washer |
| | 26 Bolt |



TORO 80-0060

TORO 9-2780

SIZE

3/4"
1"

MODEL NO

80-0060
9-2780

DESCRIPTION

These are double check assemblies. They were produced from approximately 1969-1977. It was redesigned and replaced by the Toro Model BDC. Note there is a different model number for each size. This assembly uses a vertical piping configuration where water goes in the bottom and comes back down out of the bottom. The body was made of bronze. The check assemblies had a plastic modular construction. Check seats are replaceable. All springs are contained when the cover is removed.

BASIC REPAIR KIT

Repair kit contains first and second check modules and all O'rings.

SIZE

3/4"-1"

KIT NO

900-46 * ♦

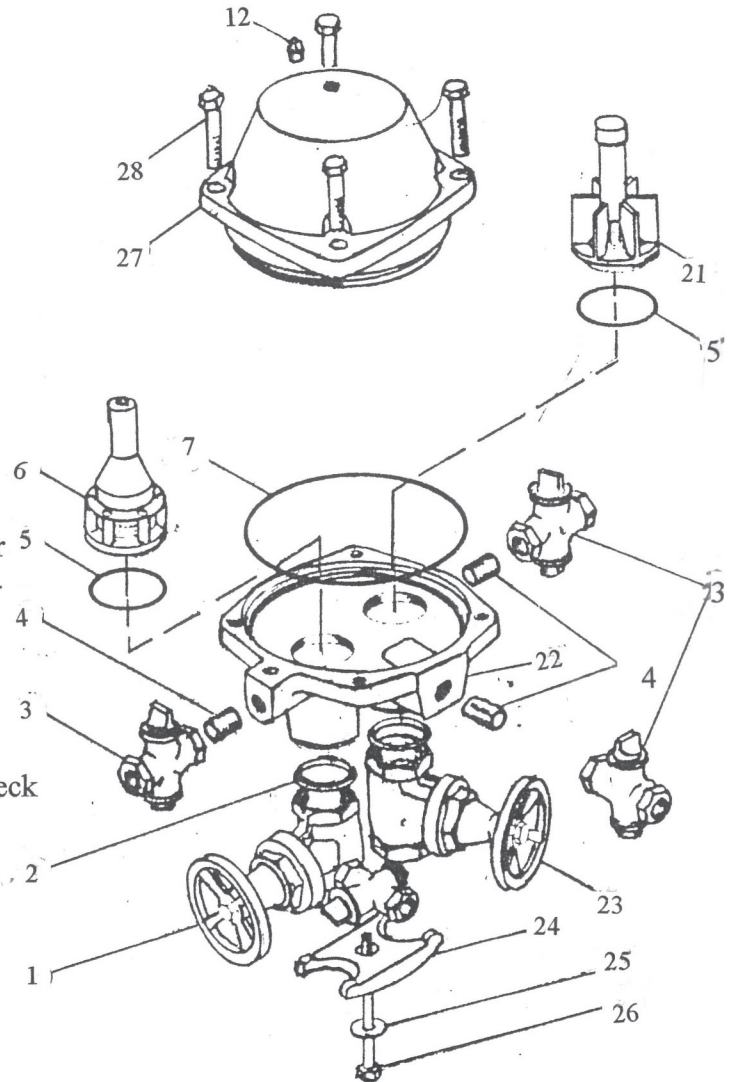
IMPORTANT FEATURES

~ Bronze body

~ Replaceable check seats

~ Contained springs

~ Factory repair information available



1 #1 Shut Off
2 Gasket
3 Test Cock
4 Nipple
5 O'Ring
6 #1 Ck Assy
7 O'Ring
12 Plug

21 #2 Shut Off
22 Base
23 #2 Shut Off
24 Clamp
25 Washer
26 Bolt
27 Cover
28 Bolt



TORO BDC

TORO BRP

SIZE

3/4" 1"

DESCRIPTION

These assemblies were produced by Toro from approximately 1976-1980. In 1980 the Orion Co. bought this model and production began under the Orion BRP and Orion BDC model. See the corresponding Orion model numbers.



TORO

PVB/ 80-0550/ 80-0560

SIZE

80-0550 - 3/4"

80-0560 - 1"

DESCRIPTION

This is a pressure vacuum breaker assembly. Production began approximately 1977 and discontinued around 2020. The 3/4" was discontinued approximately in 2001 and the 1" was discontinued a couple years later. It is a celcon plastic bodied unit with ball valve shut-offs built into the assemblies body. The check seat is cast in the body and is not replaceable. There is spring tension from the check spring when the bonnet is unscrewed. Internal hardware parts are mostly made of plastic. The original model designation was PVB; it later adopted the separate model number for each size.

BASIC REPAIR KIT

Repair kit contains check assembly, check spring, float, float spring, and cover O-ring

SIZE

3/4"

1"

KIT NO

900-44 *◆

900-44 *◆

IMPORTANT FEATURES

~Plastic body

~Integral ball valve

~Check seat cast in the body

~Check spring is not contained
when bonnet is removed

