

AMES 4000

AMES RP

SIZE

4", 6", 8", 10"

DESCRIPTION

The Ames 4000 is a reduced pressure assembly. Production began approximately in 1986. The 4" and 6" were discontinued in 1995. The 8" and 10" were discontinued in 2005. The bodies are a welded fabricated steel which is fused epoxy coated. The internal hardware parts are stainless steel with the check seats constructed of bronze. Special tools are suggested for proper repair of the check assemblies. The first check uses the tower mount design of check mechanism which requires the tong tool for proper repair. The second check uses the side mount check mechanism which requires the retainer clip tool for proper repair. The check springs are contained when the covers are removed but must be released for a proper repair. Check seats are replaceable and a seat removal tool is needed to change them. The check mechanism utilizes a pivot action knuckle joint design. The check utilizes a vulcanized clapper plate instead of a rubber disc. The relief valve spring is not contained when the relief valve cover is removed. The relief valve body is removable from the check body and utilizes an external sensing line. The relief valve seat is replaceable.

BASIC REPAIR KIT

Repair kit contains all check clapper plates, mounting bolt washers, cover gaskets, RV O'ring, rolling diaphragm, and relief valve disc.

SPECIAL TOOLS

<u>SIZE</u>	<u>KIT NO</u>	<u>TONG TOOL</u>	<u>RETAINER CLIP</u>
4"	RPRT400 *	7016090	7013911
6"	RPRT 600 *	7016090	7013912
8"	RPRT 800 *	7016090	7013913
10"	RPRT 800 *	7016090	7013913

IMPORTANT FEATURES

~One piece fabricated steel fused epoxy coated body

~Checks and relief seats are replaceable

~Check springs are contained when the covers are removed

~R.V. spring is not contained when cover is removed

~Special tools are suggested for proper repair

~External R.V. sensing line

~R.V. assembly is detachable

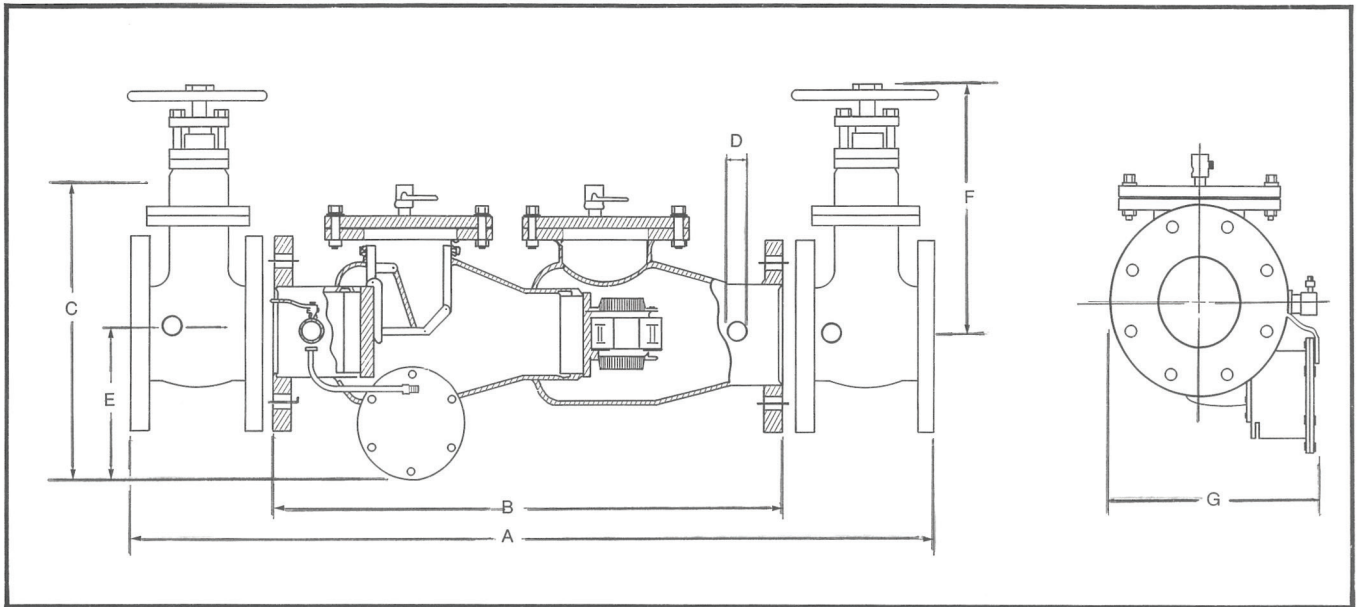
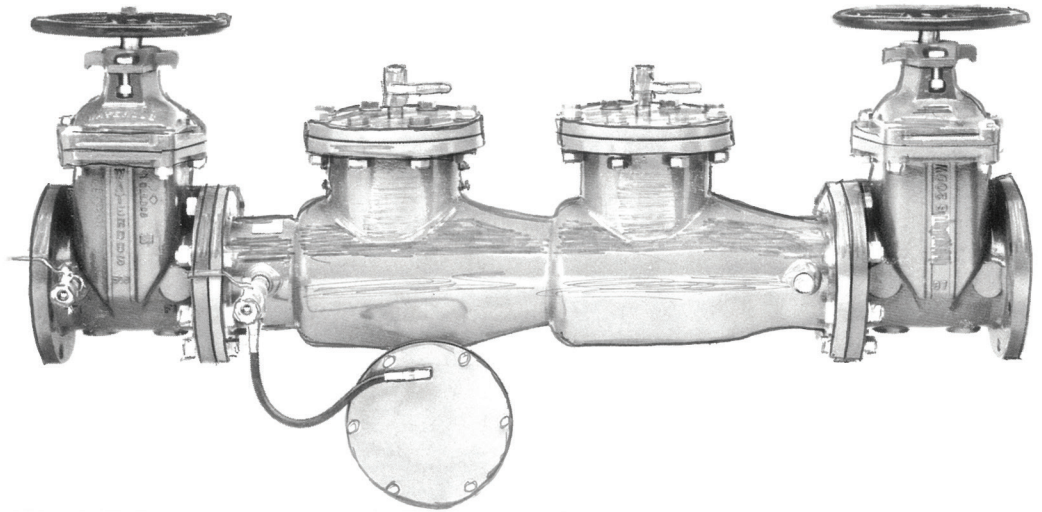
~Factory repair information enclosed



AMES^{CO.}

VALVES & BACKFLOW ASSEMBLIES

MODEL 4000 RP REDUCED PRESSURE PRINCIPLE BACKFLOW PREVENTION ASSEMBLY



Ames - Weights & Dimensions (Inches)

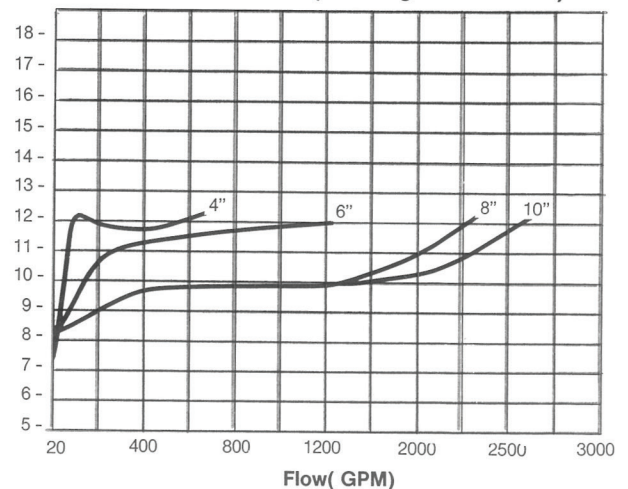
Model	Size	A	B	C	D	E	F	G	NET WT with gates	NET WT w/o gates
4000 RP	4"	45½	27½	23 ⁷ / ₁₆	¾ NPT	9½	13¾	18	288 lbs.	148 lbs.
4000 RP	6"	58¾	37¾	25½	¾ NPT	10½	16¾	20	465 lbs.	205 lbs.
4000 RP	8"	68¾	45¾	27	¾ NPT	12	20 ³ / ₁₆	22½	779 lbs.	369 lbs.
4000 RP	10"	71¾	45¾	27	¾ NPT	12	24¾	25	1059 lbs.	409 lbs.

Features

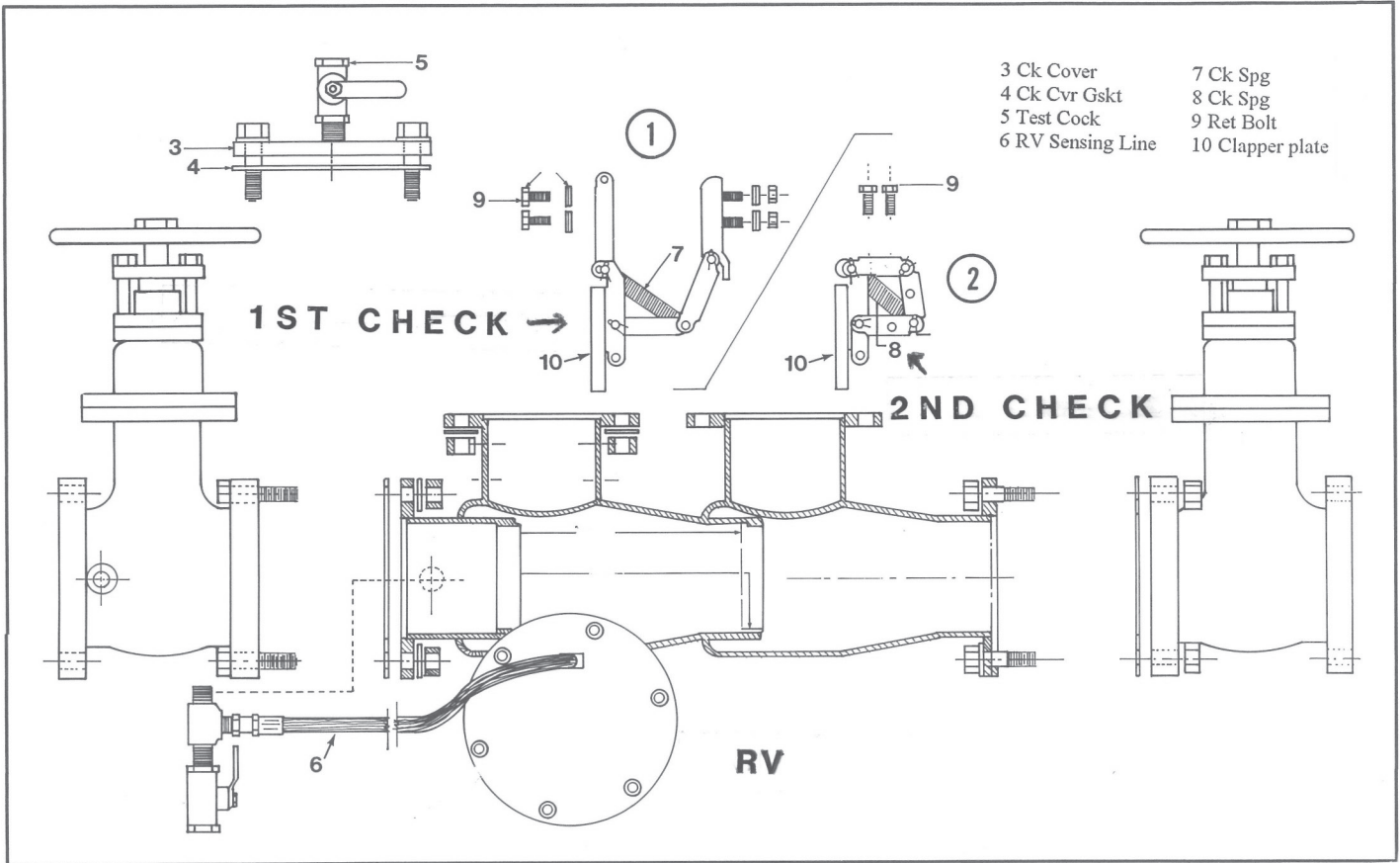
- Fusion bonded epoxy lined and coated.
- Stainless steel internal parts.
- One piece body design.
- Heavy-duty steel body design.
- Air Gap Drain available.
- Lighter weight than cast or ductile iron assemblies.
- Rated at 175 PSI for water temperatures up to 140° F
- Flange dimensions and holes in accordance with AWWA Class D.
- Body nameplate provides nominal size, direction of flow, PSI rating and year of manufacture.
- Lightweight body design reduces freight and installation costs.
- Body material ASTM A36
- Removable bronze seat ring ASTM 862-82.

AMES^{CO.}
VALVES & BACKFLOW ASSEMBLIES

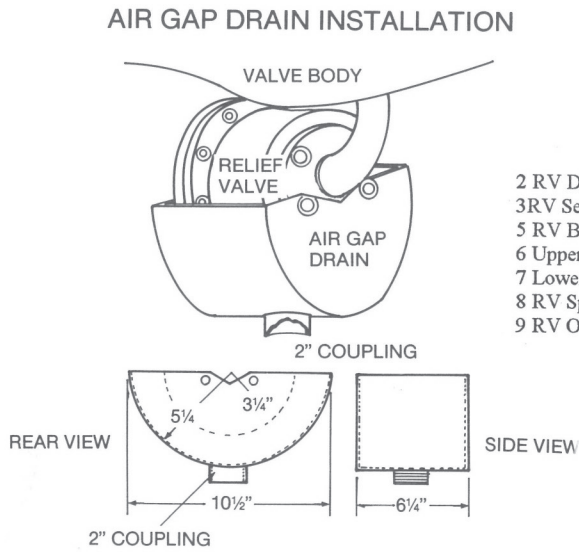
*Flow Characteristics (including shut off valves)



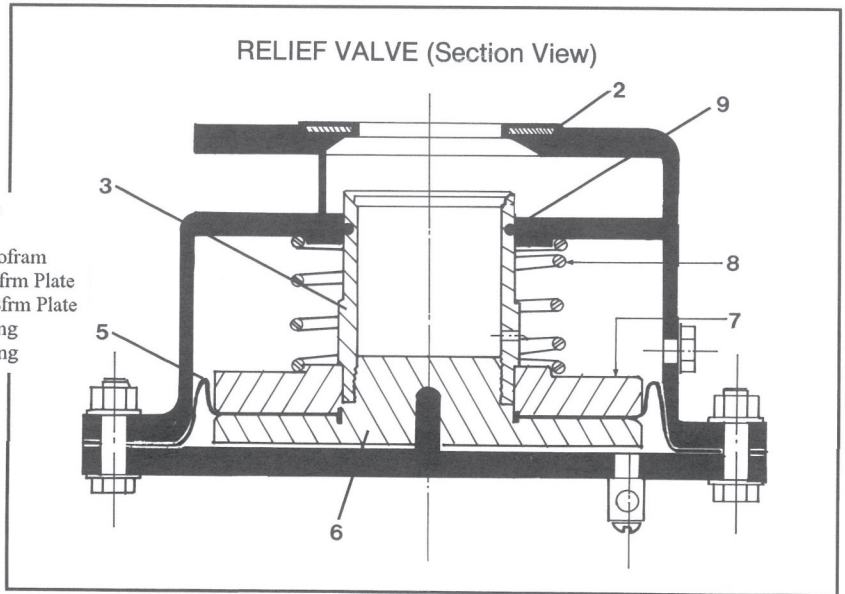
Reduced Pressure Principle Backflow Prevention Device Parts List



Differential Pressure Relief Valve for 4000 RP and 5000 RPDA



- 2 RV Disc
- 3 RV Seat
- 5 RV Bellofram
- 6 Upper Bfim Plate
- 7 Lower Bfim Plate
- 8 RV Spring
- 9 RV O'ring



NOTE: Same relief valve is used for all size mainline valves 4" through 10"

