

AMES 5000

SIZE

4", 6", 8", 10"

DESCRIPTION

This is a reduced pressure detector assembly. Production began approximately 1989 and was discontinued in 2005. It utilizes an assembly similar to the 4000 series for the mainline assembly. The bypass unit used was either the Watts 909 3/4" or Conbraco 40-200 3/4". Check the bypass assembly serial number tag to verify which you have.

BASIC REPAIR KIT

Mainline repair kit contains all check clapper plates, mounting bolt washers, and check cover gaskets, RV disc, rolling diaphragm, and O'ring.

<u>SIZE</u>	<u>KIT NO</u>	<u>AIR GAP</u>	<u>SPECIAL TOOLS</u>	
		<u>DRAIN</u>	<u>TONG TOOL</u>	<u>RETAINER CLIP</u>
4"	RPRT 400 *	7011361	7016090	7013911
6"	RPRT 600 *	7011361	7016090	7013912
8"	RPRT 800 *	7011361	7016090	N/A
10"	RPRT 800 *	7011361	7016090	N/A

Bypass repair kit contains all rubber discs or disc holders, diaphragm, and O'rings

<u>SIZE</u>	<u>KIT NO</u>	<u>AIR GAP DRAIN</u>
Watts 909 3/4"	909-RT075	AGC
Conbraco 40-200 3/4"	40-004-04	40-200-X1
Conbraco 40-200 3/4"	40-004-A4	40-200-X1

IMPORTANT FEATURES

~Main line unit see Ames 4000

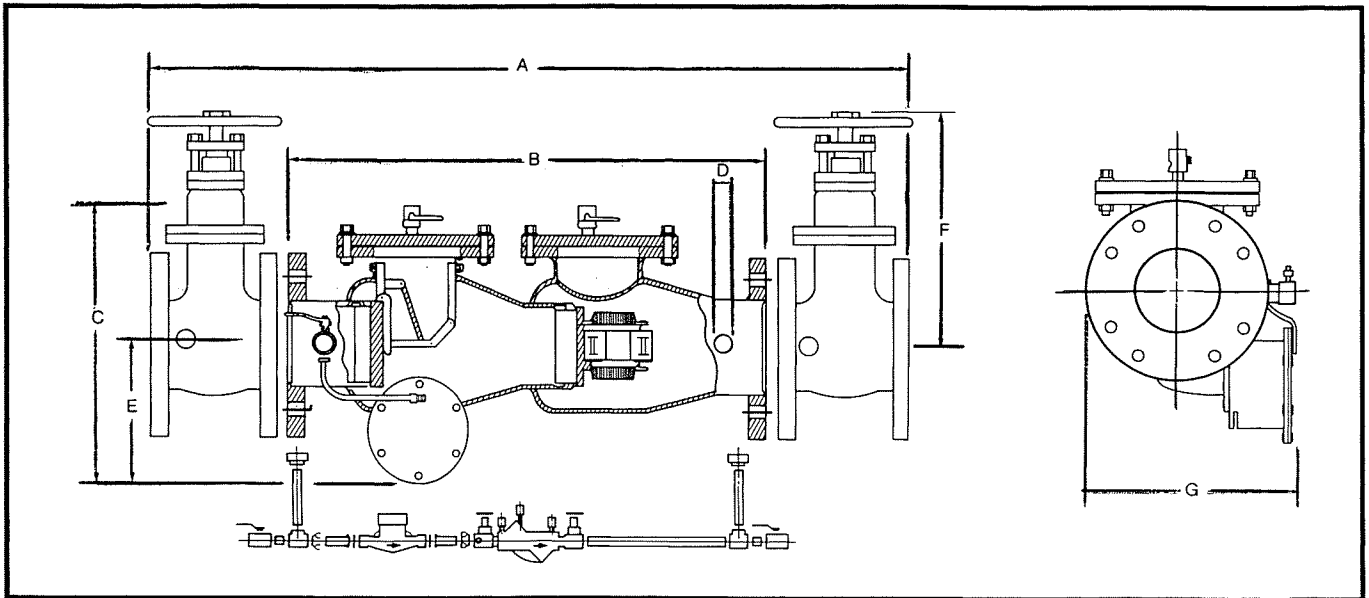
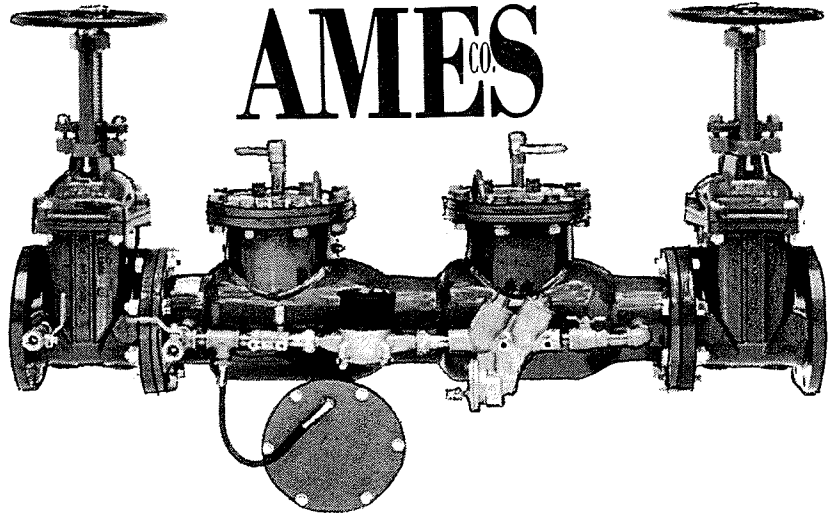
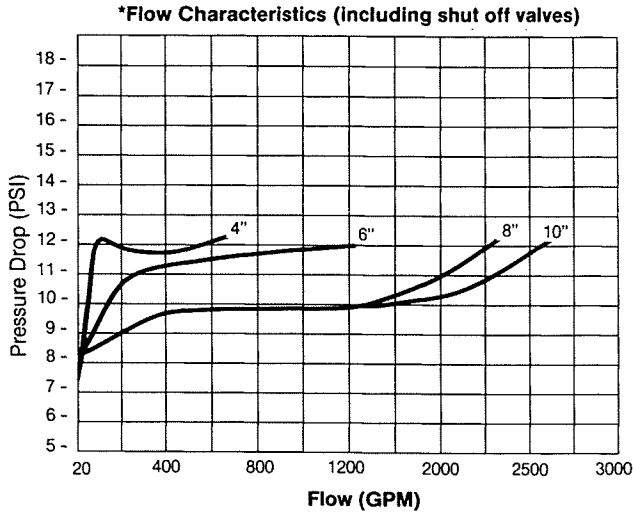
~Bypass see either Watts 909 3/4" or Conbraco 40-200 3/4"

~Factory repair information enclosed



MODEL 5000 RPDA

REDUCED PRESSURE DETECTOR ASSEMBLY



Ames 5000 RPDA Weights & Dimensions (Inches)

Model	Size	A	B	C	D	E	F	G	NET WT w/OS & Y gates	NET WT w/o gates
5000 RPDA	4"	45½	27½	237/16	¾ NPT	9½	233/16	18	391 lbs.	157 lbs.
5000 RPDA	6"	58¾	37¾	25½	¾ NPT	10½	29 3/16	20	564 lbs.	214 lbs.
5000 RPDA	8"	68¾	45¾	27	¾ NPT	12	37¾	22½	910 lbs.	378 lbs.
5000 RPDA	10"	71¾	45¾	27	¾ NPT	12	48	25	1330 lbs.	418 lbs.

Features

- Low Head Loss
- One piece body design
- Heavy duty steel body provides a substantially lighter weight unit than cast or ductile iron
- Ames Guard Fusion Bonded Epoxy internally and externally coated
- 300 series stainless steel internal parts.
- Easily removable bronze seat
- Available in sizes 4" - 10"
- Bypass line ¾"
- 175 psi working pressure
- 350 psi hydrostatic test pressure
- Flange dimension and holes in accordance with AWWA Class D
- All internal working parts 300 series stainless steel
- Removeable bronze seat ASTM B62-82
- Body material ASTM A36
- Body nameplate provides nominal size, direction of flow, psi rating, and year of manufacture
- Mainline shutoff valves: UL FM OS & Y Resilent Wedge