

AMES 5000CIV

SIZE

2 1/2", 3", 4", 6", 8", 10"

DESCRIPTION

This is a reduced pressure principle detector assembly. Production began in 1998 and discontinued in 2013. In 1997 the Ames Company was purchased by the Watts Regulator Company. Ames began marketing the Watts 909RPDA as the Ames 5000CIV.

BASIC REPAIR KIT

The main line repair kit contains all discs, diaphragm, and O-rings.

<u>SIZE</u>	<u>KIT NO</u>
2 1/2"-3"	LF909-RT250
4"	LF909-RT400
6"	LF909-RT600
8"	LF909M1-RT800
10"	LF909M1-RT001

Bypass repair kit contains all check disc holders, diaphragm, and O-rings.

<u>SIZE</u>	<u>KIT NO</u>
Watts 3/4" 909	LF909-RT075

IMPORTANT FEATURES

~See Watts 909RPDA



MODEL 5000CIV

Reduced Pressure Detector Assembly

MATERIALS

Size 2 1/2" to 10" (65-250mm) have epoxy coated cast iron body, bronze seat and disc holder; stainless steel trim and durable, tight seating rubber check valve discs.

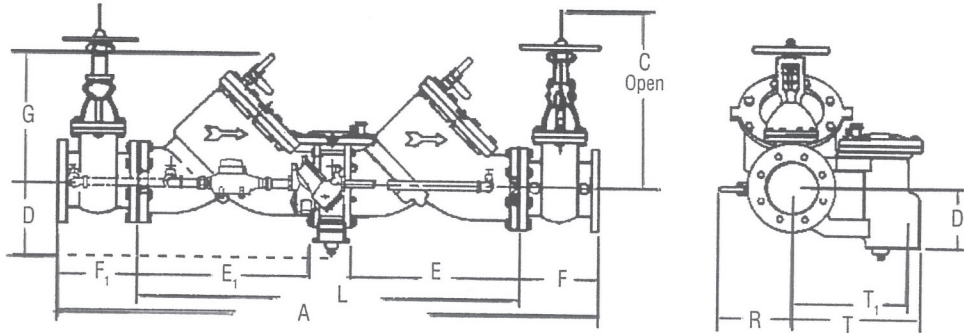
All sizes furnished with bronze body ball valve test cocks. Furnished with outside stem and yoke (OS&Y) gate valves UL/FM listed. 5000CIV bypass line unit consists of an approved reduced pressure back flow preventer assembly and a 5/8" x 3/4" (16 x 19mm) water meter.

SIZES

2 1/2", 3", 4", 6", 10" 5000CIV
(65, 80, 100, 150, 200, 250mm)

PRESSURE - TEMPERATURE

Sizes 2 1/2" through 10" (64-250mm) are suitable for supply pressures up to 175psi (12.1 bars) and water temperatures to 140°F (60°C) maximum.

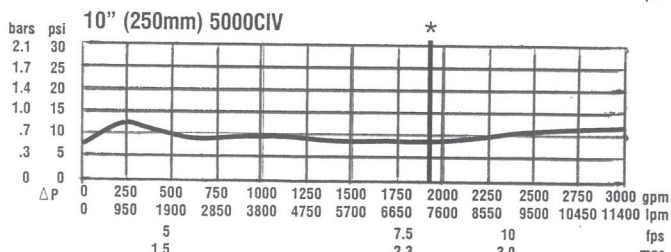
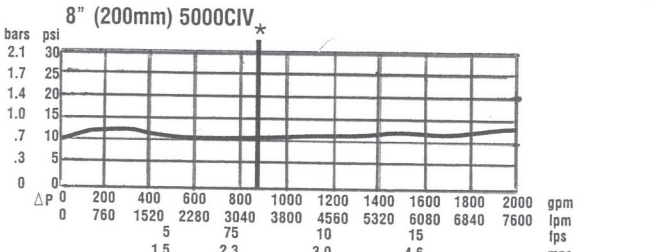
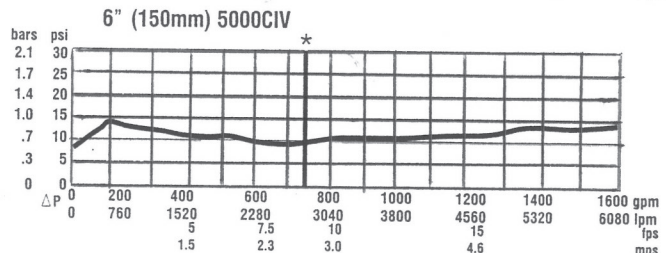
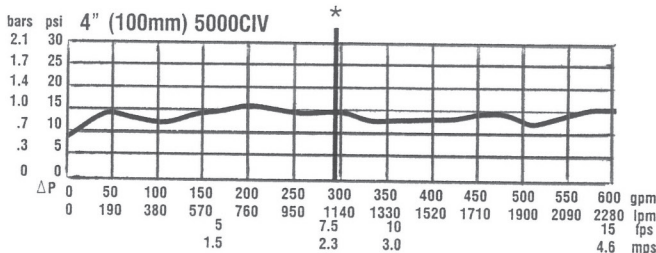
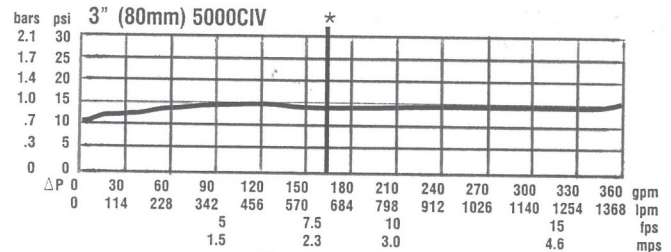
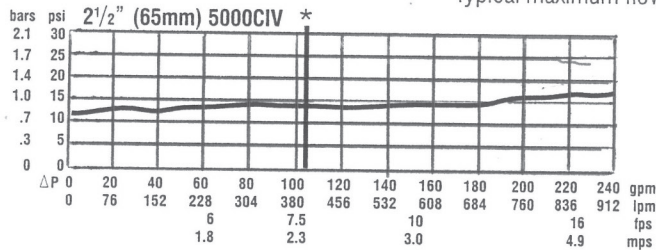


Dimensions

Size (Dn)	A		C		D		D ₁		E, E ₁		F, F ₁		G		L		R		T		T ₁		Weight	
in. mm	in. mm	in. mm	in. mm	in. mm	in. mm	in. mm	in. mm	in. mm	in. mm	in. mm	in. mm	in. mm	in. mm	in. mm	in. mm	in. mm	in. mm	in. mm	in. mm	in. mm	in. mm	lbs.	kgs.	
2 1/2	65	42 1/8 1070	16 3/8 416	5 1/4 133	4 1/4 114	12 305	8 203	7 178	26 1/8 664	14 356	9 229	7 5/8 194	230	104										
3	80	42 1/8 1070	18 7/8 479	5 1/4 133	4 1/4 114	12 305	8 203	7 178	26 1/8 664	14 356	9 229	7 5/8 194	230	104										
4	100	55 1/8 1400	22 3/4 578	6 152	5 7/8 149	17 432	9 229	9 1/2 241	37 940	15 381	13 5/8 346	11 3/4 299	470	213										
6	150	65 1/2 1664	30 3/8 765	6 152	6 152	20 3/4 527	10 1/2 267	14 1/2 368	44 1/2 1130	16 406	13 5/8 346	11 3/4 299	798	362										
8	200	78 1/4 1988	37 3/4 959	9 3/4 248	8 5/8 219	26 660	11 1/2 292	18 1/2 470	55 1/4 1403	17 432	18 1/2 470	16 3/8 416	1456	660										
10	250	93 5/8 2378	45 3/4 1162	9 3/4 248	8 5/8 219	32 813	13 330	21 1/4 546	67 1/2 1715	18 457	18 1/2 470	16 3/8 416	2230	1012										

CAPACITY

*Typical maximum flow rate (7.5 feet/sec.)



Ames product specifications in U.S. customary units and metric are approximate and are provided for reference only. Ames reserves the right to change or modify product design, construction, specifications, or materials without prior notice and without incurring any obligation to make such changes and modifications on Ames products previously or subsequently sold. A Division of Watts Industries, Inc.