

AMES

C300/ C300A

SIZE

C300

2 1/2", 3", 4", 6", 8", 10"

C300A

2 1/2", 3", 4", 6"

DESCRIPTION

This is a double check detector assembly. This model was produced under the Hunter name from 2000-2002. In 2002 Watts bought the Hunter models and began production as the Ames C300 and C300A. The C300A model was discontinued in 2008. Watts will produce these models under the Watts name as the model 757 DCDA or 757A DCDA. The "C" designation refers to Ames Colt brand name. The mainline assembly is similar in construction to the C200 and C200A. The bypass assembly used for the first two years was the Flomatic DCVE 3/4". The assembly also used the Ames 2000BM3 3/4" and the Watts 007M3 3/4" for the bypass unit. Be sure to check the identification information on the bypass assembly to confirm which you have.

BASIC REPAIR KIT

Repair kit contains discs and O-rings for both check modules

SIZE

C300 2 1/2"-4"

C300A 2 1/2"-4"

C300 6"

C300A 6"

C300 8"

C300 10"

KIT NO

200CRT250

200CART250

200CRT600

200CART600

200CRT800

200CRT001

Bypass repair kit contains all check discs and O-rings

SIZE

Flomatic DCVE 3/4"

Ames 2000BM3 3/4"

Watts 007M3 3/4"

KIT NO

B91RK00 ♦

007M3-RT075

007M3-RT075

IMPORTANT FEATURES

~2 1/2"-6" check access slides open

~Body is stainless steel

~Check modules are repairable

~Factory repair information enclosed



Colt™ Series C300, C300N

Double Check Detector Assemblies

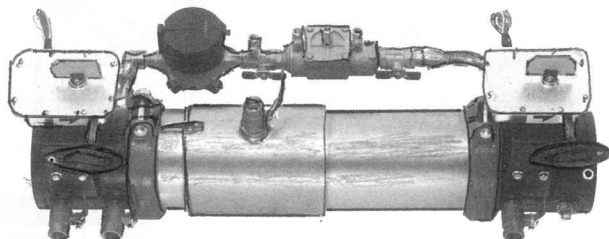
Sizes: 2½" – 10" (65 – 250mm)

Approvals

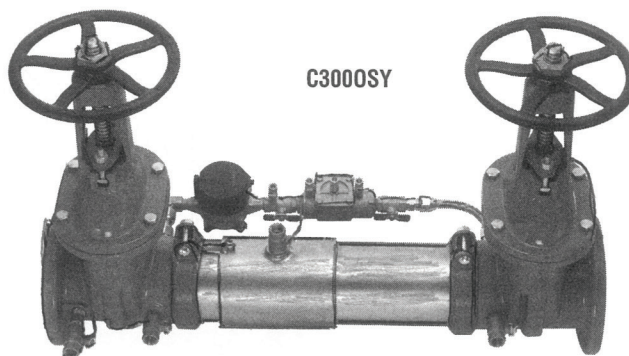


For additional approval information please contact the factory or visit our website at www.amesfirewater.com

C300BFG



C3000SY



Features

- Extremely Compact Design
- 70% Lighter than Traditional Designs
- 304 (Schedule 40) Stainless Steel Housing & Sleeve
- Groove Fittings Allow Integral Pipeline Adjustment
- Patented Check Provides Lowest Pressure Loss
- Unmatched Ease of Serviceability
- Available with Grooved Butterfly Valve Shutoffs
- Available for Horizontal, Vertical or N Pattern Installations
- Replaceable Check Disc Rubber

Available Models

Suffix:

- NRS – non-rising stem resilient seated gate valves
- OSY – UL/FM outside stem and yoke, resilient seated gate valves
- BFG – UL/FM grooved gear operated butterfly valves with tamper switch

Pressure — Temperature

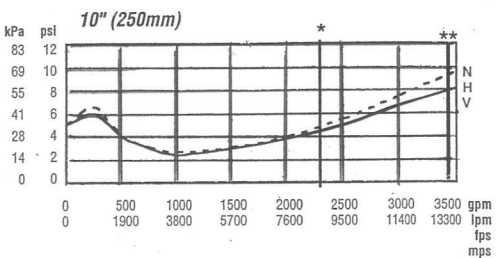
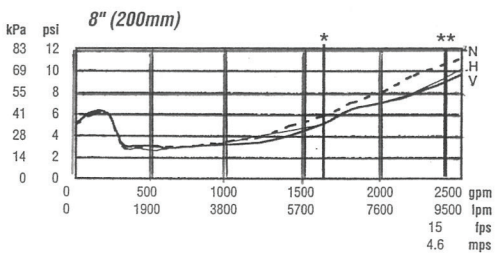
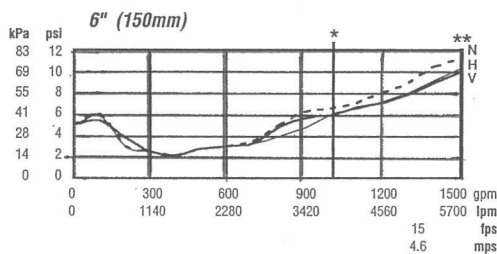
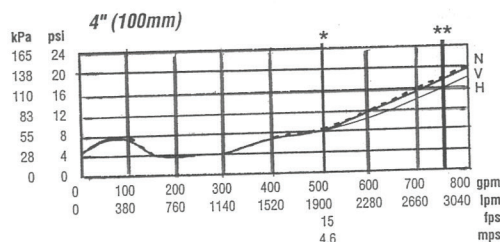
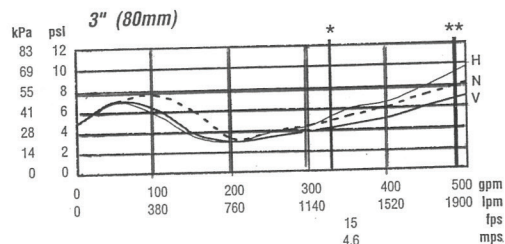
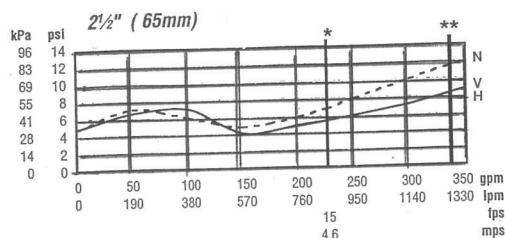
Temperature Range: 33°F – 140°F (5°C – 60°C)
Maximum Working Pressure: 175psi (12.06 bar)

Materials

- Housing & Sleeve: 304 (Schedule 40) Stainless Steel
- Elastomers: EPDM, Silicone and Buna 'N'
- Checks: Noryl®, Stainless Steel
- Check Discs: Reversible Silicone or EPDM
- Test Cocks: Bronze Body Nickel Plated
- Pins & Fasteners: 300 Series Stainless Steel
- Springs: Stainless Steel

Colt™ Series C300a, C300Na

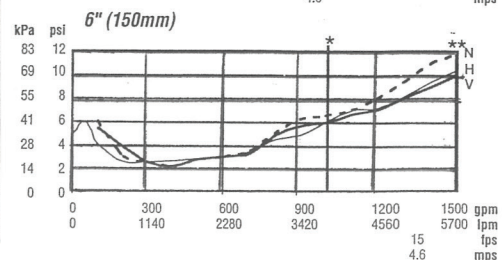
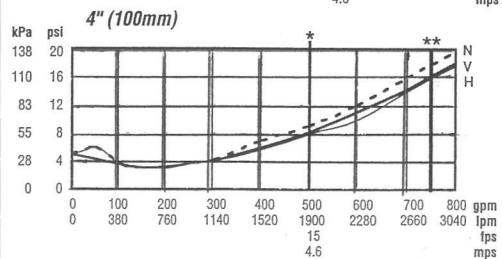
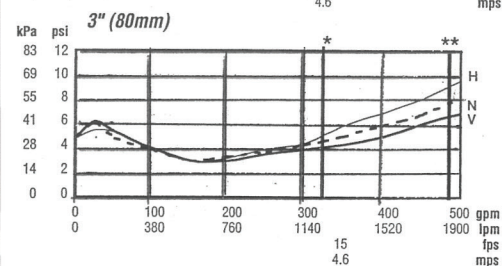
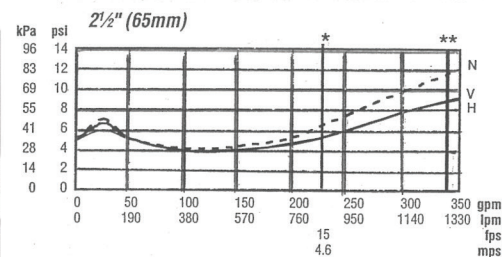
Colt™ Series C300, C300N



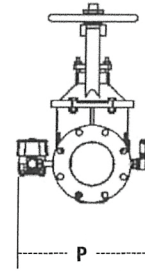
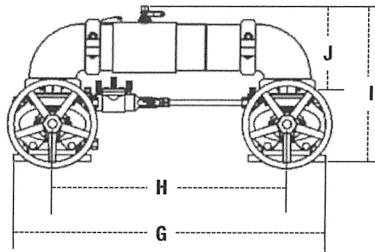
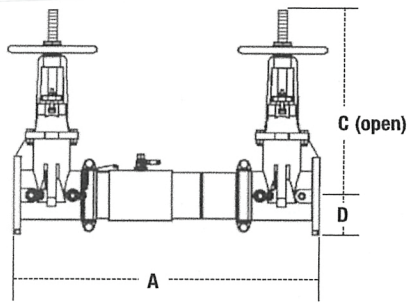
H – Horizontal

V-Vertical

N-N Pattern

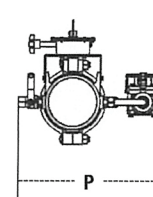
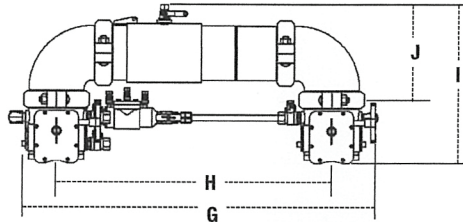
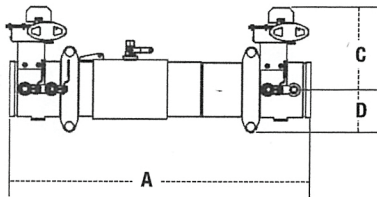


Dimensions — Weights



C300, C300N

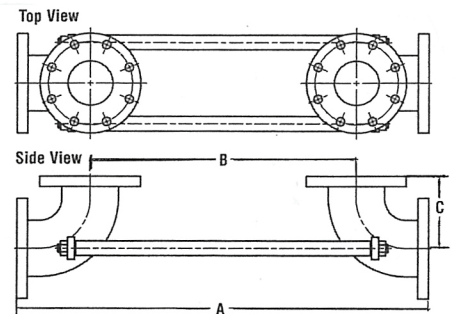
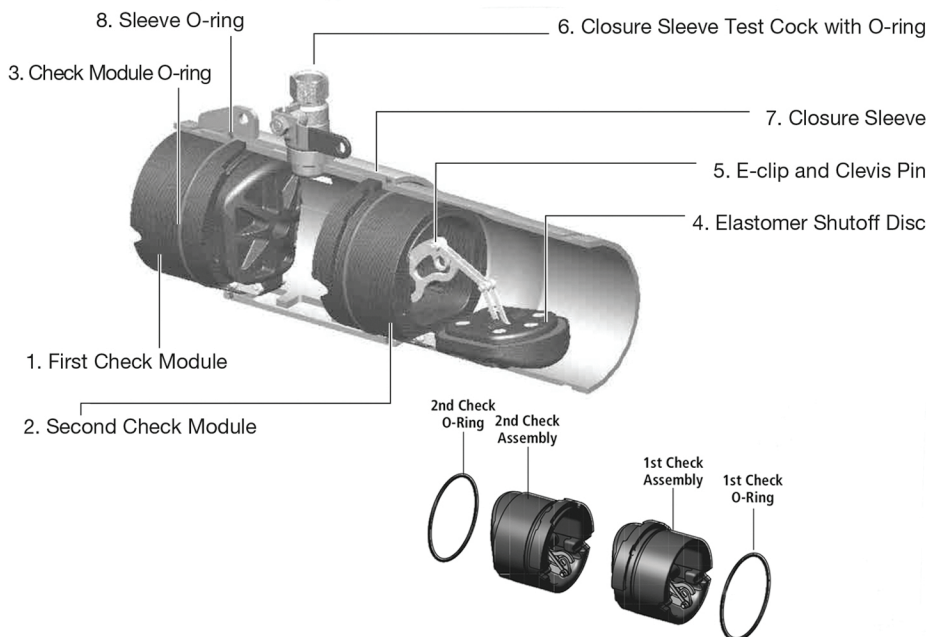
| SIZE (DN) | | | | DIMENSIONS | | | | | | | | | | | | WEIGHT | | | | | |
|-----------|-----|-----|------|------------|------|-----|-----|-----|------|-----|------|-----|-----|-----|-----|--------|-----|------|------|-------|------|
| | | A | | C (OSY) | | D | | G | | H | | I | | J | | P | | C300 | | C300N | |
| in. | mm | in. | mm | in. | mm | in. | mm | in. | mm | in. | mm | in. | mm | in. | mm | in. | mm | lbs. | kgs. | lbs. | kgs. |
| 2½ | 65 | 30¾ | 781 | 16⅞ | 416 | 3½ | 89 | 29⅞ | 738 | 21½ | 546 | 15½ | 393 | 8⅜ | 223 | 13⅜ | 335 | 139 | 63 | 147 | 67 |
| 3 | 80 | 31¾ | 806 | 18⅞ | 479 | 3⅞ | 94 | 30¼ | 768 | 22¼ | 565 | 17⅞ | 435 | 9⅜ | 233 | 14½ | 368 | 159 | 72 | 172 | 78 |
| 4 | 100 | 33¾ | 857 | 22¾ | 578 | 4 | 102 | 33 | 838 | 23½ | 597 | 18½ | 470 | 9⅝ | 252 | 15⅜ | 386 | 175 | 79 | 198 | 90 |
| 6 | 150 | 43½ | 1105 | 30⅞ | 765 | 5½ | 140 | 44¾ | 1137 | 33¼ | 845 | 23⅜ | 589 | 13⅞ | 332 | 19 | 483 | 309 | 140 | 350 | 159 |
| 8 | 200 | 49¾ | 1264 | 37¾ | 959 | 6⅞ | 170 | 54⅞ | 1375 | 40⅞ | 1019 | 27⅞ | 697 | 15⅞ | 399 | 21⅜ | 538 | 494 | 224 | 569 | 258 |
| 10 | 250 | 57¾ | 1467 | 45¾ | 1162 | 8⅞ | 208 | 66 | 1676 | 49½ | 1257 | 32½ | 826 | 17⅞ | 440 | 24 | 610 | 795 | 361 | 965 | 438 |



C300BFG, C300NBFG

| SIZE (DN) | | | | DIMENSIONS | | | | | | | | | | | | WEIGHT | | | | | |
|-----------|-----|-----|------|------------|-----|-----|-----|-----|------|-----|------|-----|-----|-----|-----|--------|-----|---------|------|----------|------|
| | | A | | C | | D | | G | | H | | I | | J | | P | | C300BFG | | C300NBFG | |
| in. | mm | in. | mm | in. | mm | in. | mm | in. | mm | in. | mm | in. | mm | in. | mm | in. | mm | lbs. | kgs. | lbs. | kgs. |
| 2½ | 65 | 27¾ | 705 | 8 | 203 | 3½ | 89 | 29⅞ | 759 | 21½ | 546 | 14⅝ | 379 | 8⅜ | 223 | 13 | 330 | 70 | 32 | 78 | 35 |
| 3 | 80 | 28¾ | 718 | 8⅝ | 211 | 3⅞ | 94 | 30⅞ | 779 | 22¼ | 565 | 15⅞ | 392 | 9⅜ | 233 | 13½ | 343 | 68 | 31 | 81 | 37 |
| 4 | 100 | 29 | 737 | 8⅝ | 227 | 3⅞ | 94 | 31⅝ | 811 | 23½ | 597 | 16¼ | 412 | 9⅝ | 252 | 14 | 356 | 75 | 34 | 98 | 44 |
| 6 | 150 | 36½ | 927 | 10 | 254 | 5 | 127 | 43⅞ | 1097 | 33¼ | 845 | 19⅞ | 500 | 13⅞ | 332 | 14½ | 368 | 131 | 59 | 171 | 78 |
| 8 | 200 | 42¾ | 1086 | 12¼ | 311 | 6½ | 165 | 51⅞ | 1297 | 40⅞ | 1019 | 23⅞ | 592 | 15⅞ | 399 | 18⅞ | 462 | 275 | 125 | 351 | 159 |

Noryl® is a registered trademark of SABIC Innovative Plastics™.



| SIZE | A | | B | | C | | WEIGHT |
|---------|------|------|------|------|-----|-----|---------|
| in. mm | in. | mm | in. | mm | in. | mm | lb. kg. |
| 3" 80 | 33¾" | 857 | 22¾" | 578 | 5½" | 140 | 60 27 |
| 4" 100 | 37" | 940 | 24" | 610 | 6½" | 165 | 100 45 |
| 6" 150 | 49¾" | 1264 | 33¾" | 857 | 8" | 203 | 150 68 |
| 8" 200 | 58⅝" | 1489 | 40⅝" | 1032 | 9" | 229 | 230 104 |
| 10" 250 | 72" | 1829 | 50" | 1270 | 11" | 279 | 375 170 |

Colt N Series Valve Setters