

BACKFLOW DIRECT

DERINGER 40/ 40X/ 50/ 50X/ G/ GX

SIZE

2", 2 ½", 3", 4", 6", 8"

DESCRIPTION

This is a reduced pressure assembly and a Reduced pressure detector assembly. Production began in 2014 on the models 40/40X/50/50X while production on the 40G/40GX/50G/50GX began in 2018. The 40/40X/50/50X come with grooved end integral butterfly shut offs while the 40G/40GX/50G/50GX comes with OSY flanged end shut offs. The body is a fabricated stainless steel design with a bolted single access cover. The checks are a modular design made of Noryl plastic material. The check discs are silicone rubber. The check modules are held into the body with bolts that extend from the outside of the body into a slot to hold the check modules from the body for repair. The check uses a torsion spring design. Spring tension does not need to be released to change the check disc. The relief valve uses a stainless steel body that screws onto the bottom of the check body and uses an external relief valve sensing line. The relief valve uses a rolling diaphragm design with a silicone disc. The relief valve spring is contained when the relief valve cover is removed and is released by the removal of an e-ring of the relief valve stem. The reduced pressure detector assembly bypass is a type 2 design with a single check piped around the mainline second check.

BASIC REPAIR KIT

Repair kit contains check discs and O'rings

<u>SIZE</u>	<u>KIT NO</u>
2" - 4"	BFD-RT250*
6" - 8"	BFD-RT800*

Bypass assembly repair kit contains disc, disc holder and O'ring

<u>SIZE</u>	<u>KIT NO</u>
¾"	BFD-1010

IMPORTANT FEATURES

~Stainless Steel Body

~Integral Butterfly Shut offs

~Noryl Plastic Check Modules

~Type 2 Bypass

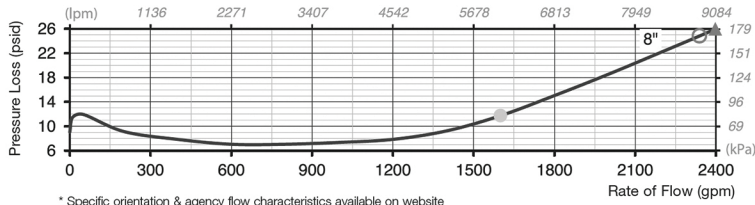
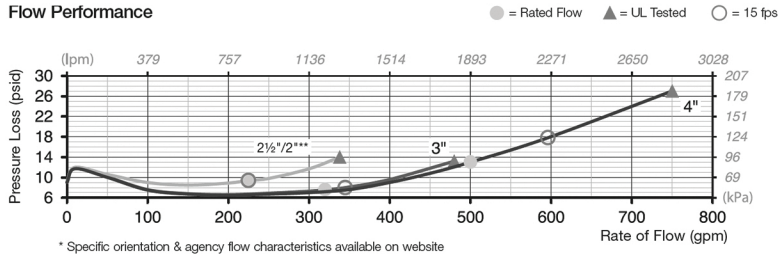
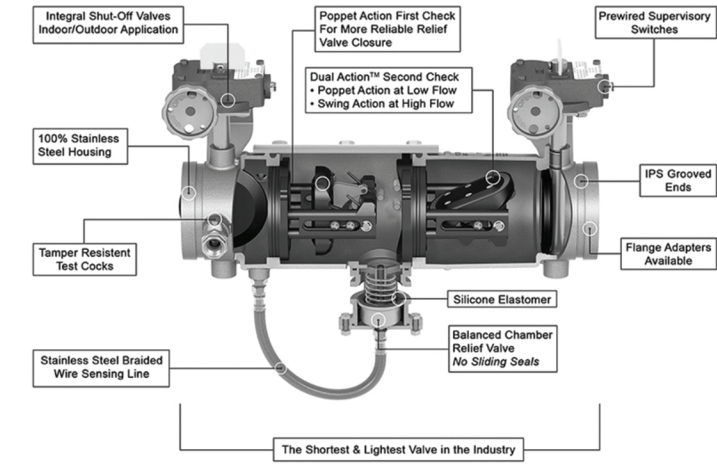
~Factory Repair Information Enclosed



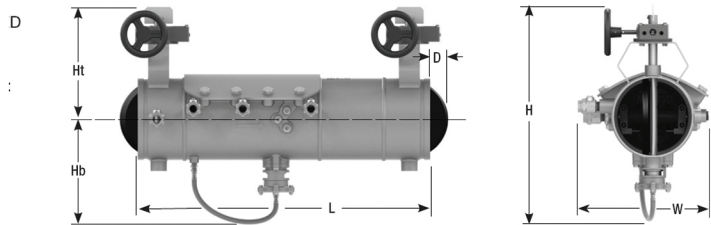
Deringer™ 40

Reduced Pressure Zone Assembly

Sizes: 2"– 8"

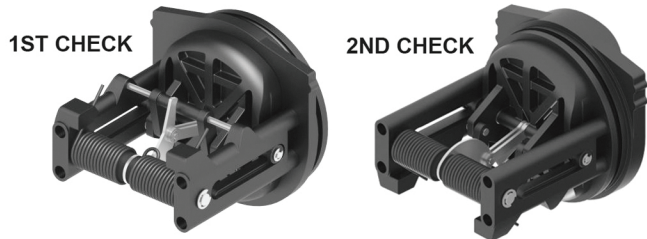


Dimensions — Weights



Size	Model	Ht		Hb		L		D		H		W		Weight	
in.		in.	mm	in.	mm	in.	mm	in.	mm	in.	mm	in.	mm	lbs	kg
2 (2½)**	40	7.1	180	8.7	221	22.1	561	0.0	0	15.8	401	11.0	279	44	20
2½	40	7.1	180	8.7	221	18.7	475	0.0	0	15.8	401	11.0	279	42	19
3	40	7.4	188	8.7	221	18.7	475	0.0	0	16.1	409	11.0	279	44	20
4	40	7.9	201	8.7	221	18.7	475	0.2	5	16.6	422	11.0	279	46	21
6	40X*														
8	40	10.4	264	10.7	272	31.0	787	1.8	46	21.1	536	13.8	351	145	66

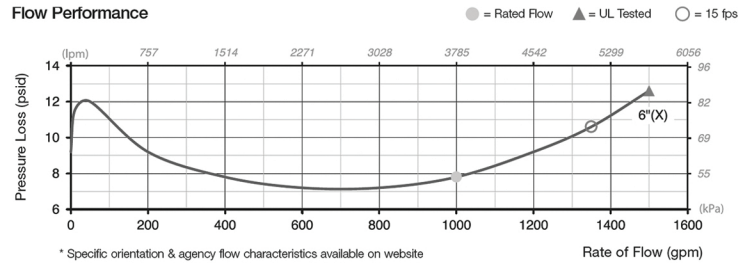
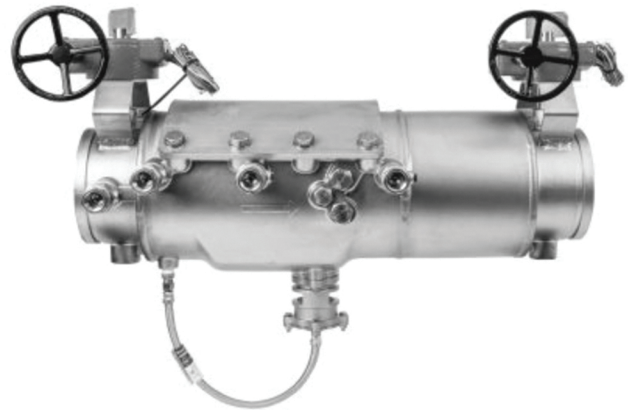
Size	Model	Ht		Hb		L		D		H		W		Weight	
in.		in.	mm	in.	mm	in.	mm	in.	mm	in.	mm	in.	mm	lbs	kg
6	40X	9.6	244	10.7	272	28.625	727	1.0	25	20.3	516	13.8	351	126	57



Deringer™ 40X

Low Head Loss Reduced Pressure Zone Assembly

Sizes: 6"



Materials

Valve Housing:	304 Stainless Steel
Valve Cover:	304 Stainless Steel
SOV Disks:	EPDM/304SS
SOV Shafts:	304 Stainless Steel
RV Spring:	302 Stainless Steel
SOV Bearings:	Teflon® fluoropolymer/Bronze
Non-wetted Bolts:	Grade 8 Zinc Plated
Check Disks:	Silicone (NSF)
Wetted Fasteners:	18-8 Stainless Steel
RV Housing:	304 Stainless Steel
Check Springs:	17-7 Stainless Steel
Check Pins:	17-7/18-8 Stainless Steel
Check Seats:	Noryl® Polymer (NSF)
O-rings:	Buna-N (NSF)
RV Hose:	Braided Stainless Steel Wire

Pressure — Temperature

Temperature Range: 33°F – 140°F

Working Pressure: 10 – 175psi

Teflon® is a registered trademark of The Chemours Company.

Noryl® is a registered trademark of SABIC Global Technologies B.V.

*The wetted surface of this product contacted by consumable water contains less than 0.25% of lead by weight.

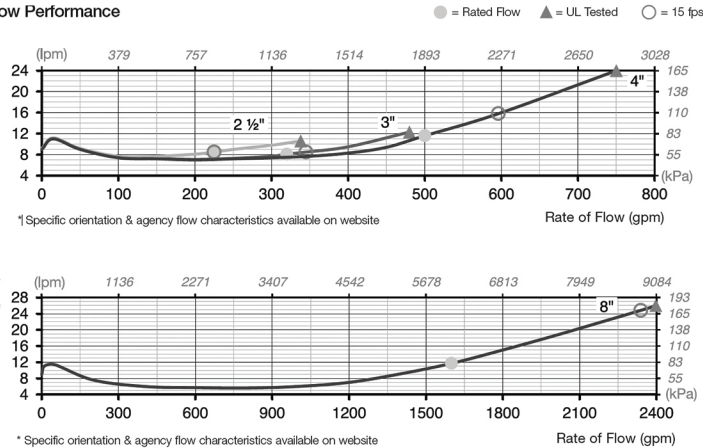
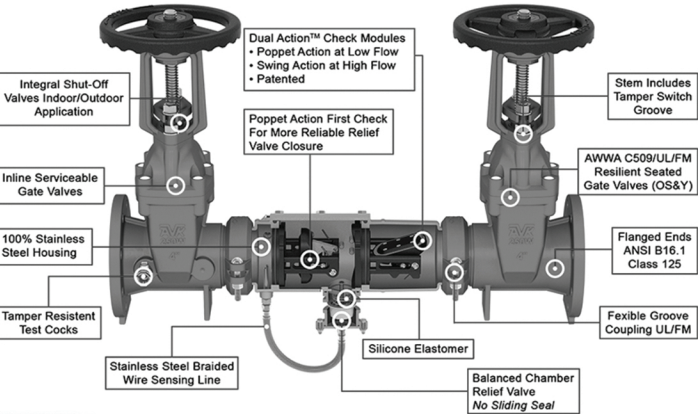


Relief Valve with Sensing Line

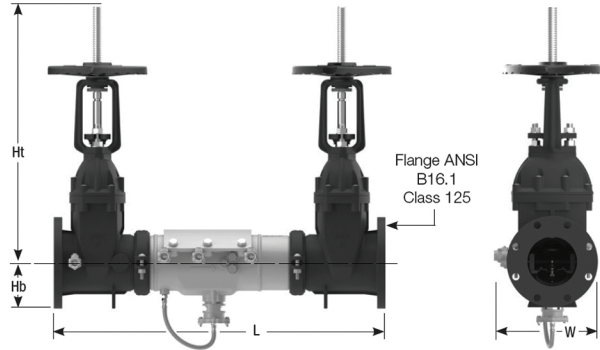
Deringer™ 40G

Reduce Pressure Zone Assembly

Sizes: 2½" – 8"

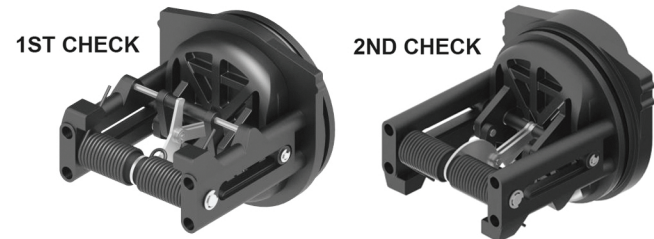


Dimensions — Weights



Size	Model	Ht		Hb		L		Ht+Hb		W		Weight	
in.		in.	mm	in.	mm	in.	mm	in.	mm	in.	mm	lbs.	kg
2½	40G	19.0	483	9.3	236	31.9	810	28.3	719	11.0	279	125	57
3	40G	19.5	495	9.3	236	31.9	810	28.3	732	11.0	279	129	59
4	40G	22.5	572	9.3	236	33.9	861	31.8	808	11.0	279	163	74
6	40GX*												
8	40G	39.4	1001	11.5	292	45.0	1143	51.0	1295	14.6	429	455	206

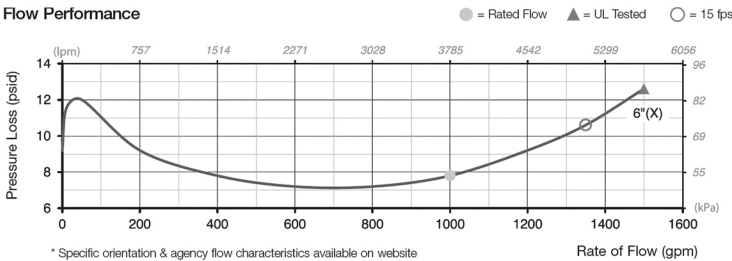
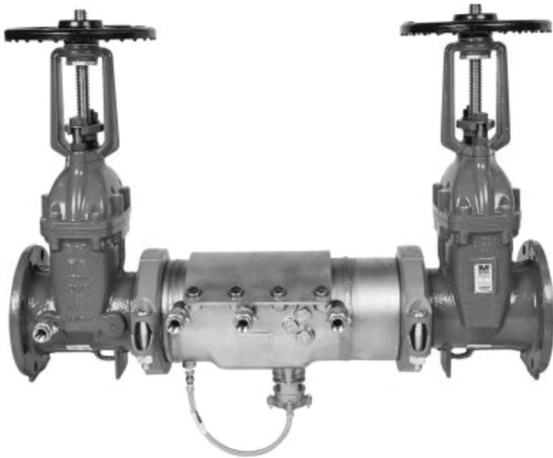
Size	Model	Ht		Hb		Ht+Hb		L		W		Weight	
in.		in.	mm	in.	mm	in.	mm	in.	mm	in.	mm	lbs.	kg
6	40GX	30.9	784	10.5	266	41.3	923	39.9	1014	13.8	351	332	151



Deringer™ 40GX

Low Head Loss Reduced Pressure Zone Assembly

Sizes: 6"



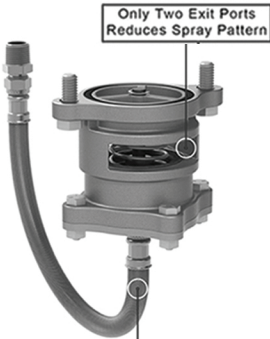
Materials

- Valve Housing: 304 Stainless Steel
- Valve Cover: 304 Stainless Steel
- SOV Disks: EPDM/304SS
- SOV Shafts: 304 Stainless Steel
- RV Spring: 302 Stainless Steel
- SOV Bearings: Teflon® fluoropolymer/Bronze
- Non-wetted Bolts: Grade 8 Zinc Plated
- Check Disks: Silicone (NSF)
- Wetted Fasteners: 18-8 Stainless Steel
- RV Housing: 304 Stainless Steel
- Check Springs: 17-7 Stainless Steel
- Check Pins: 17-7/18-8 Stainless Steel
- Check Seats: Noryl® Polymer (NSF)
- O-rings: Buna-N (NSF)
- RV House: Braided Stainless Steel Wire

Pressure — Temperature

Temperature Range: 33°F – 140°F
Working Pressure: 10 – 175psi

*The wetted surface of this product contacted by consumable water contains less than 0.25% of lead by weight.



Relief Valve with Sensing Line