

BEECO 6

BEECO 6U

SIZE

Model 6 - 1 1/2", 2", 2 1/2", 3", 4", 6", 8", 10"

Model 6U - 4", 6", 8", 10"

DESCRIPTION

The Model 6 is no longer in production. The assembly was produced from approximately 1948 to 1978. The assembly cannot be repaired in line and must be removed to be repaired. The assembly is flanged on both ends for removal. Special tools are needed to disassemble the unit and field repairs are not recommended. The 6U model is simply the same as the Model 6 except the U means it has been examined by Underwriters Laboratories. The original units were produced under the name E.C. Service Co. instead of Beeco. The bodies were made of galvanized cast iron. All seats were replaceable. The internal hardware was made mostly of bronze. The checks were an in-line modular design. The check springs were contained when the assembly was removed from the piping for repair. On all of the springs, tension had to be released for repair. The relief spring was also contained when the R.V. cover was removed. The assembly had an external R.V. sensing line.

BASIC REPAIR KIT

Repair kit contains all rubber discs, diaphragms, and gaskets.

<u>SIZE</u>	<u>KIT NO</u>
1 1/2"-2"	61235 ♦
2 1/2"	61236 ♦
3"	61237 ♦
4"	61238 ♦
6"	61239 ♦
8"	61240 ♦
10"	61241 ♦

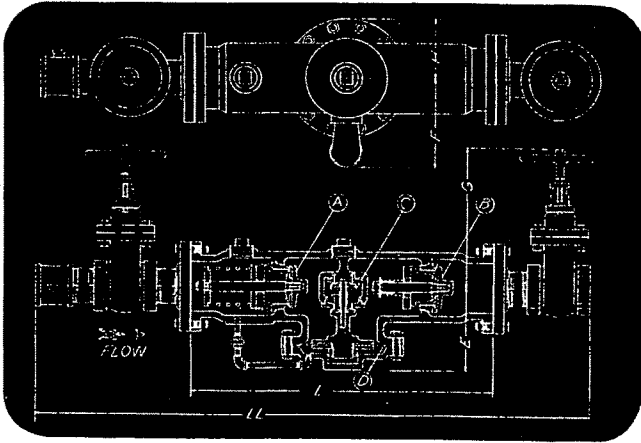
IMPORTANT FEATURES

- ~Body is galvanized cast iron*
- ~External R.V. sensing line*
- ~All seats are replaceable*
- ~All springs are contained*
- ~Special tools are needed for repair*
- ~Factory repair information available*

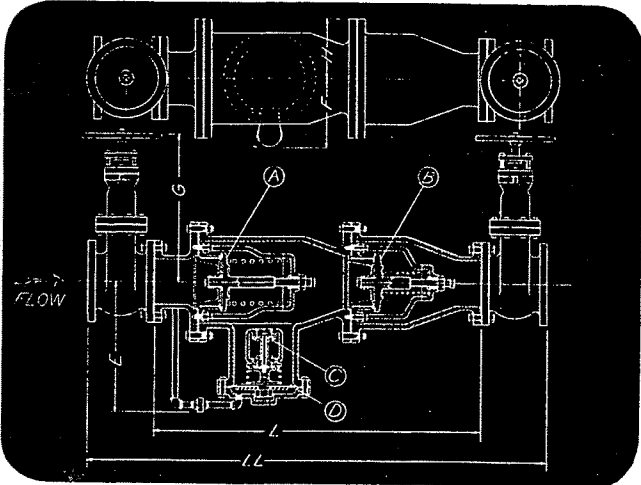


PIPE SIZES

	1½"	2"	2½"	3"	4"	6"	8"	10"	16"
L	24½"	24½"	24½"	30"	39¼"	50¾"	56¼"	62¼"	74"
LL	41"	43"	51"	56"	72"	85"	80"	89"	106"
H	6"	6"	6"	6"	8"	8"	10¼"	12½"	17½"
E	8½"	8½"	8½"	8½"	13"	13"	24"	25"	29"
F	10"	10"	10"	10"	12"	12"	15"	15"	20"
G	7"	8"	14"	15"	18½"	24"	27½"	33"	46"
*APPROX. SHIPPING WT.	300 Lbs.	310 Lbs.	360 Lbs.	490 Lbs.	900 Lbs.	1390 Lbs.	2440 Lbs.	3650 Lbs.	8500 Lbs.



1½"—2"—2½"—3"—4"—6" BEECO BACKFLOW PREVENTERS

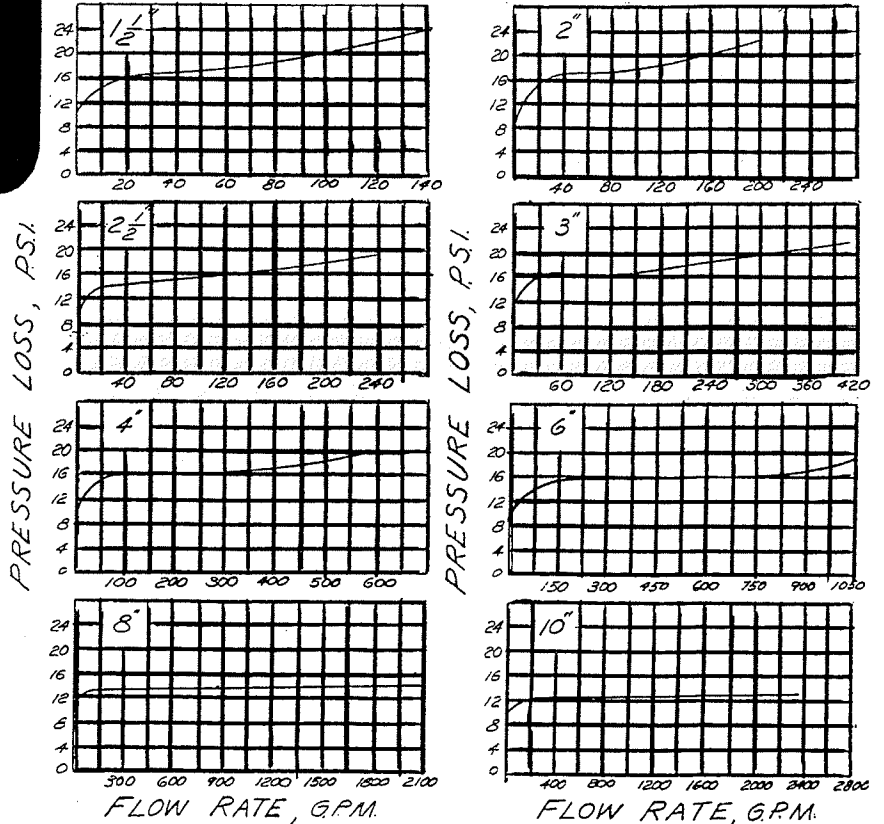


8"—10"—16" BEECO BACKFLOW PREVENTERS

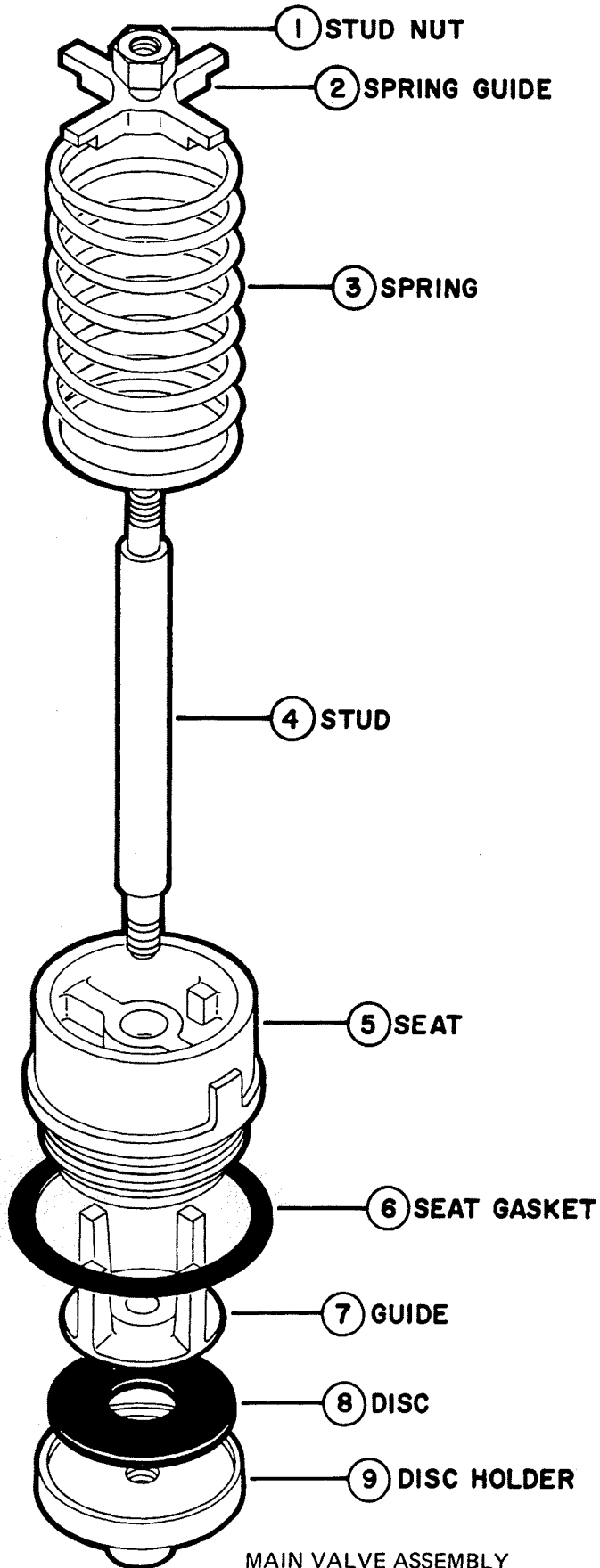
- A - Main Valve
- B - Check Valve
- C - Relief Valve
- D - RV Diaphragm

SPECIFICATIONS	
BODY	GALVANIZED CAST IRON
WORKING PARTS	BRONZE
VALVE DISCS	NEOPRENE
DIAPHRAGMS	NEOPRENE COATED COTTON DUCK
MAXIMUM WORKING PRESSURE	175 PSI
HYDROSTATIC TEST PRESSURE	350 PSI
TEMPERATURE RANGE	32°F - 145°F

FLOW CHARTS

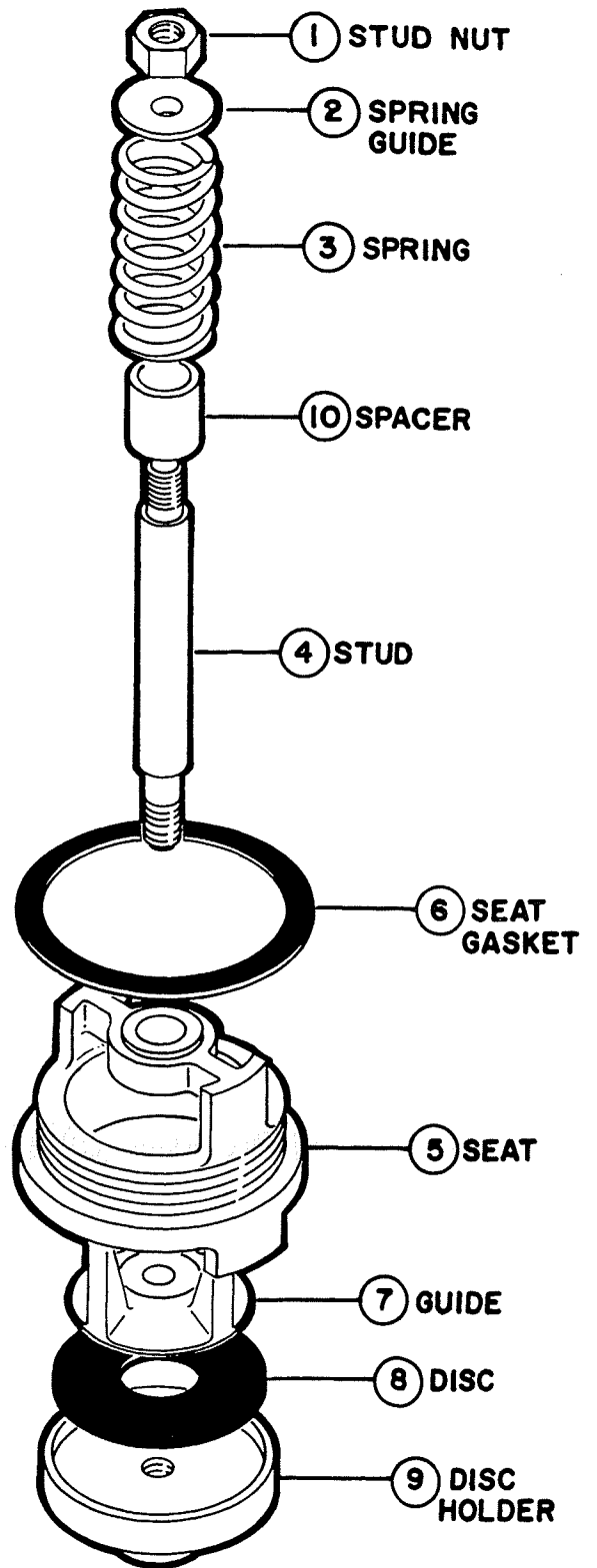


ALL BEECO REDUCED PRESSURE BACKFLOW PREVENTERS HAVE IDENTICAL OPERATING CHARACTERISTICS. LARGER SIZES HAVE DIFFERENT EXTERNAL APPEARANCE.



MAIN VALVE ASSEMBLY
 BEECO MODEL 6 (1-1/2" - 6" SIZES)

CHECK VALVE ASSEMBLY
 BEECO MODEL 6 (1-1/2" - 6" SIZES)



MAIN AND CHECK VALVE ASSEMBLIES
BEECO MODEL 6 (8" AND 10" SIZES)

