

# BEECO 6C

## SIZE

Model 6C - 1", 1 1/2", 2", 2 1/2", 3", 4", 6", 8", 10"

## DESCRIPTION

This is a reduced pressure assembly. The Beeco Model 6C was produced from approximately 1965 to 1978. Sizes 1"-4" are all bronze body construction. In the 1"-4" size the check seats were cast into the body and are not replaceable. The 6" size was produced in both bronze body and galvanized cast iron body. Be sure to specify which you have because repair kits are not interchangeable. The 6" cast iron unit had replaceable check seats, the 6" bronze did not. The 8" and 10" body are constructed of galvanized cast iron and had replaceable check seats. All sizes 1"-10" had replaceable R.V. seats. There is a hot water (140° - 210° F) repair kit available for sizes 1"-4". On the 1"-2" size some check covers were screwed onto the body and some were bolted. The internal hardware was made mostly of bronze. The first check spring was contained on the 1 1/2"-10" size when the first check cover was removed. The second check on the 2 1/2", 6", 8", and 10" had a contained spring design when the cover was removed. The R.V. spring on all sizes was contained when the cover was removed. The relief spring tension had to be released for proper repair. The relief valve had an internal sensing line. The relief valve required a very precise adjustment of the relief valve seats. Read the repair section to understand this important adjustment procedure.

## BASIC REPAIR KIT

Repair kit contains all rubber discs, diaphragms, and gaskets.

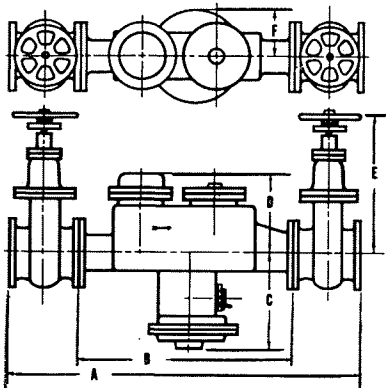
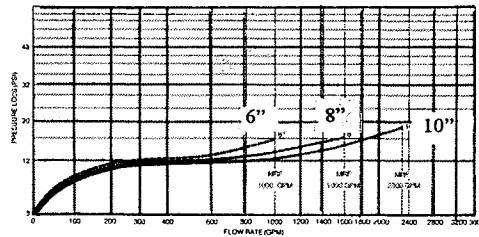
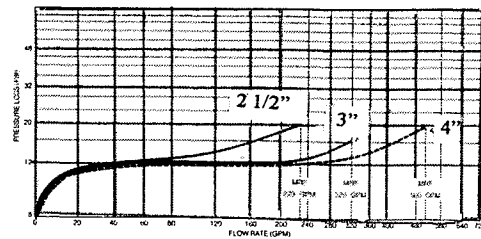
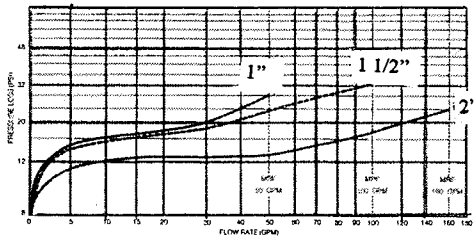
<u>SIZE</u>	<u>KIT NO</u>
1"	61225
1 1/2"	61226
2"	61227
2 1/2"	61228
3"	61229
4"	61230
6" Cast iron	61231
6" Bronze	61232
8"	61233
10"	61234

## IMPORTANT FEATURES

- ~Bronze body 1"-6"
- ~Cast iron body 6"-10"
- ~Internal R.V. sensing line
- ~R.V. springs are contained
- ~R.V. seats are replaceable
- ~Some sizes of check springs are not contained
- ~Bronze body units check seats are not replaceable
- ~Cast iron body check seats are replaceable
- ~Factory repair information enclosed



# Aergap™ REDUCED PRESSURE BACKFLOW PREVENTERS by BEECO® Model 6C

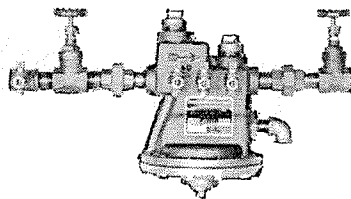


Dimensions and Weights													
Size	*1	*1 1/2	*2	2 1/2	3	4	6 CI	6 BR	8	10	1	1 1/2	2
End Detail	SCR	SCR	SCR	FLG	FLG	FLG	FLG	FLG	FLG	FLG	FLG	FLG	FLG
GPM	50	100	160	225	320	500	1000	1000	1600	2300	50	100	160
A	12 5/8"	18"	18 3/8"	35 1/8"	40 1/8"	46 5/8"	62 1/8"	59 5/8"	90 3/4"	100 1/4"	18 1/4"	25 1/2"	31"
B	8 1/4"	12 1/4"	12"	20"	24"	28 1/2"	41"	38 1/2"	67 3/4"	74 1/4"	11 1/8"	16 3/8"	16 7/8"
C	8 1/4"	8 1/2"	11 1/4"	11"	11"	12"	14 1/2"	13 3/8"	21"	22"	8 1/4"	8 1/2"	11"
D	5"	6 1/4"	9 7/8"	7 1/4"	8 1/2"	10"	15 1/2"	13 13/16"	21"	22"	5"	6 1/4"	10"
E	5 3/16"	7 1/16"	8 5/8"	13 3/4"	15 1/2"	18 3/4"	21 1/4"	24"	27 1/2"	33"	5 3/4"	7 1/4"	13"
F	4 1/2"	4 1/2"	5 1/4"	5 1/4"	5 1/4"	5 1/2"	10"	10 1/16"	13"	13"	4 1/2"	4 1/2"	5 1/4"
Relief Valve Opening	3/4"	3/4"	1 1/4"	1 1/4"	1 1/4"	2"	2"	2"	3"	3"	3/4"	3/4"	1 1/4"
Size of Test Cocks	1/4"	1/4"	1/4"	1/2"	1/2"	1/2"	3/4"	3/4"	3/4"	3/4"	1/4"	1/4"	1/4"
Net Wt. No Valves Lbs.	47	70	105	130	170	260	730	485	1750	2450	50	80	115
Net Wt. With Valves Lbs.	50	75	115	235	315	480	1100	825	2350	3400	65	95	200
Gross Wt. No Valves Lbs.	50	80	130	160	200	300	840	575	2000	2800	60	90	140
Gross Wt. With Valves Lbs.	55	100	140	280	360	540	1230	925	2700	3800	90	120	230

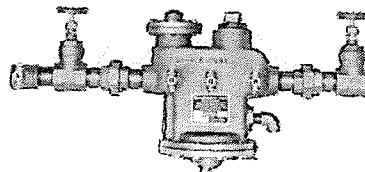
\*Maximum Rated Flows AWWA Standard C506-69 — Backflow Preventers.

\*May be longer depending on type and model gate valves available. Performance Charts available on request

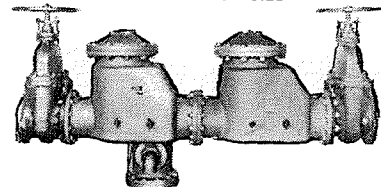
MODEL 6-C 1" SIZE



MODEL 6-C 1 1/2" SIZE



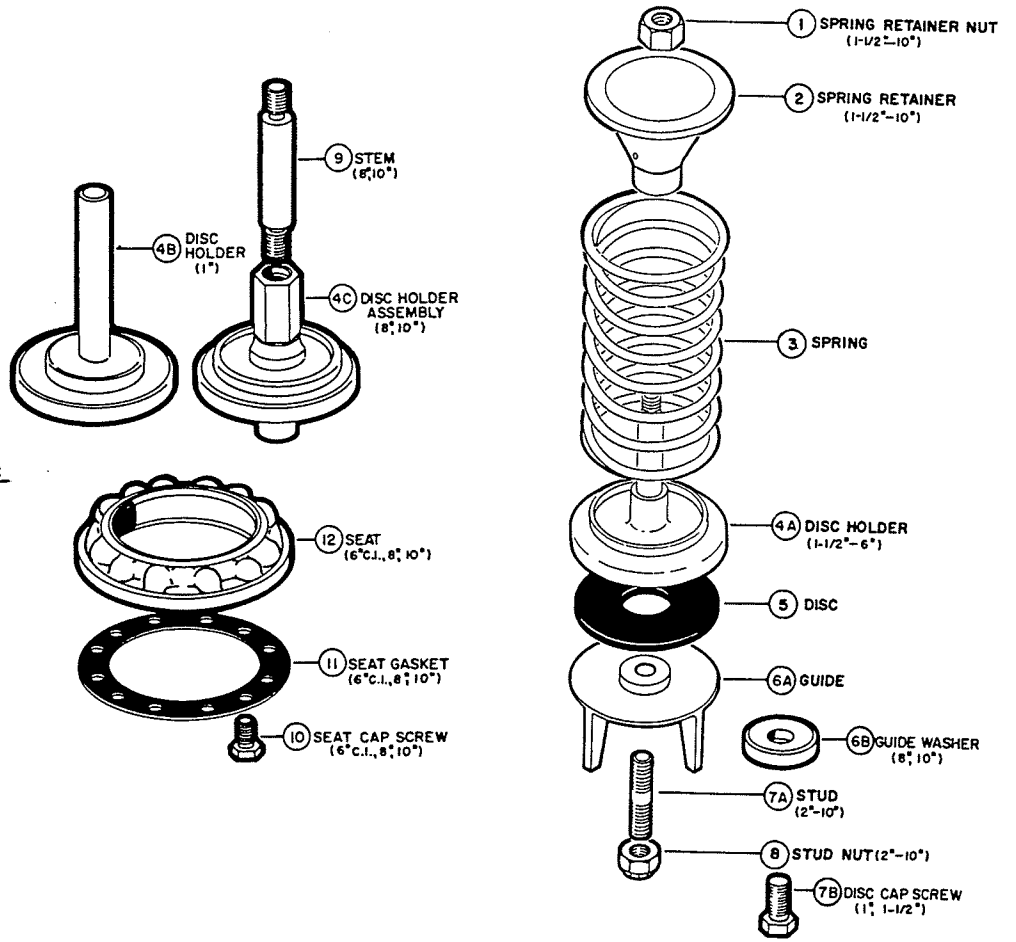
MODEL 6-C 8" SIZE



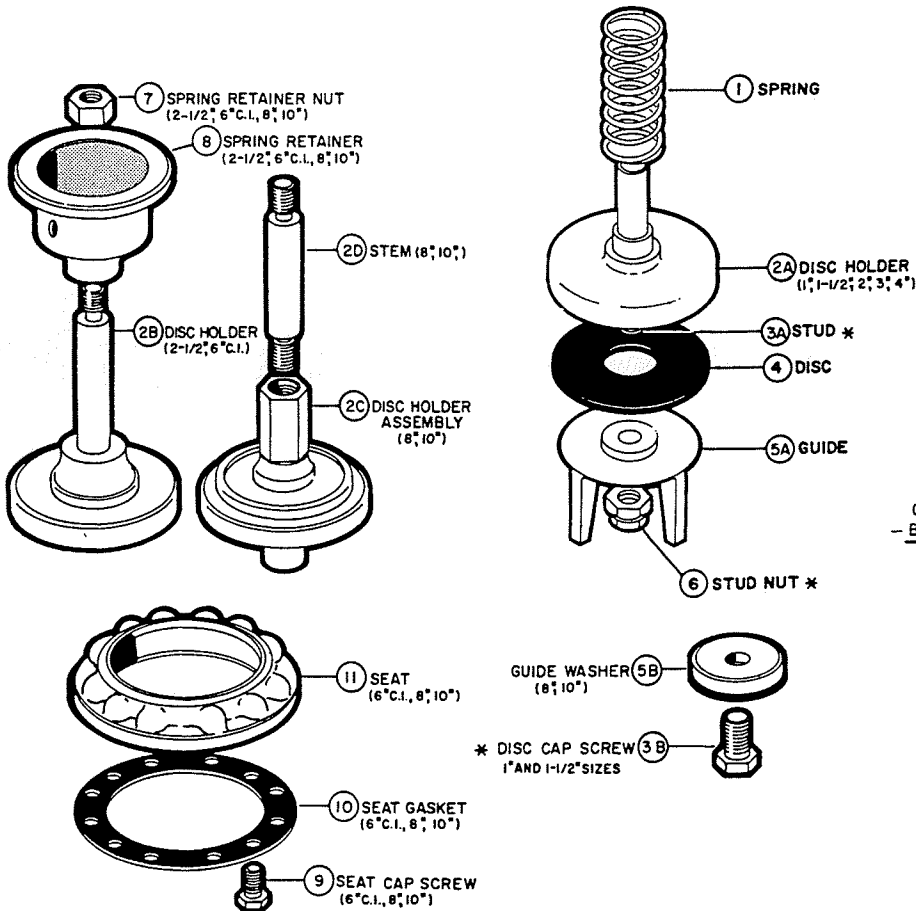
## SPECIFICATIONS

Body:	1" - 4" Bronze (6" optional) 6" - 10" Galvanized cast iron	
Working Parts:	Bronze	
Springs:	Stainless Steel	Plastic-Coated Carbon Steel
1" - 3"	All	
4"	Second check valve Relief valve	First check valve
6"	Second check valve Relief valve	First check valve
8" - 10"	All	

Valve Discs:	Neoprene
Diaphragm:	Neoprene coated cotton duck
Maximum working pressure:	175 psi
Hydrostatic test pressure:	350 psi
Temperature Range:	32° F. - 145° F.



MAIN VALVE ASSEMBLY - BEECO MODEL 6C



CHECK VALVE ASSEMBLY  
- BEECO MODEL 6C

