

HERSEY 1

SIZE

2", 3", 4", 6", 8", 10", 10 x 12"

DESCRIPTION

The Hersey Model 1 is a double check assembly. It was produced from approximately 1950-1978. The 2" size is of a bronze body construction. The 3 - 10 x 12" bodies are made of galvanized cast iron. There was a modification in 1972 on the 3" and 4" size. To be sure which style you have, the serial number is needed to order some repair parts. If the serial number is after 5231063 you have the new style. This design utilizes a lead weight loaded swing check design. Seats are replaceable and a seat removal tool is needed to replace the seats. Internal hardware parts are mostly made of bronze

BASIC REPAIR KIT

Repair kit contains all rubber discs, gaskets, and O'rings.

<u>SIZE</u>	<u>KIT NO</u>
2"	53955
3" old style	54455
3" new style	54456
4" old style	55655
4" new style	55656
6"	56455
8"	57455
10"	58455
10 x 12"	58455

IMPORTANT FEATURES

~ 2" bronze body

~ 3"-10" size are galvanized cast iron body

~ Replaceable seats

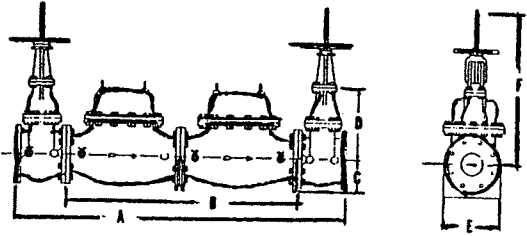
~ Lead weight loaded check

~ 3" & 4" serial number needed to order repair parts

~ Factory repair information enclosed



SPECIFICATIONS

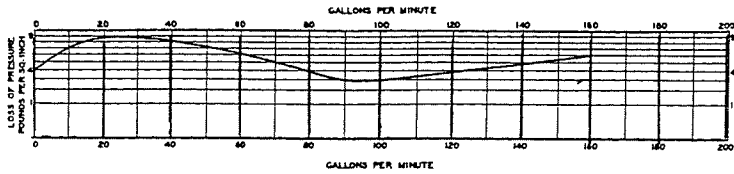


MATERIALS		
BODY	2"	BRONZE
	3" - 10"	GALV. CAST IRON
WORKING PARTS	BRONZE	
VALVE SEATS	BRONZE	
VALVE DISCS	NEOPRENE	

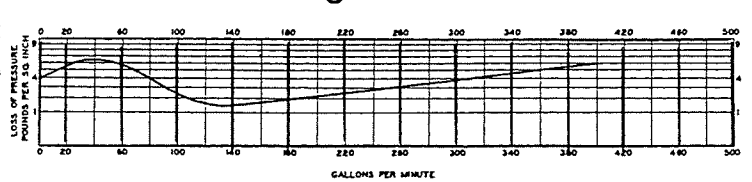
DIMENSIONS

Size	2'	2'	3'	4'	6'	8'	10'
End Detail	SCR	FLG	FLG	FLG	FLG	FLG	FLG
Max. GPM	FULL CAPACITY OF PIPE						
A	49 1/4	53 1/4	49	51	66	76	98
B	36	34	33	33	45	53	72
C	2 1/4	2 1/4	4	5	6	7 1/2	9 3/4
D	5 3/4	5 3/4	15 1/8	16 5/8	22 3/4	20 3/8	22 1/2
E	8 1/16	8 1/16	9 1/16	11 3/4	14 1/16	17	20 1/16
(OS&Y Gates) F	12	12	19 1/2	24 3/4	30	38 1/2	46 1/2
(NRS Gates) F	10 1/4	10 1/4	12 3/4	15 5/16	20 1/4	24 1/2	29
Size of Test Cocks	1/4	1/4	1/2	1/2	3/4	3/4	3/4
Net Weight—No Gates	86	91	318	400	930	2000	3140
with OS&Y Gates	120	125	330	600	1280	2500	4000
with NRS Gates	120	125	330	600	1280	2500	4000
Gross Weight—No Gates	105	110	240	460	980	2075	3240
with OS&Y Gates	140	145	360	675	1350	2600	4125
with NRS Gates	140	145	360	675	1350	2600	4125

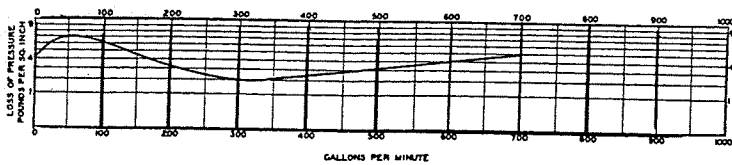
2"



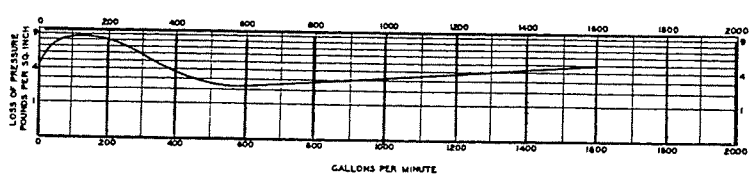
3"



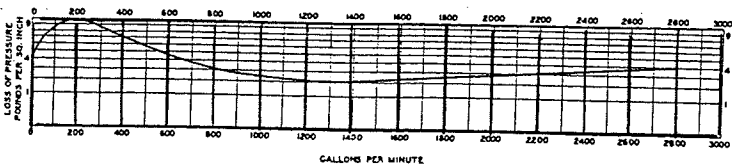
4"



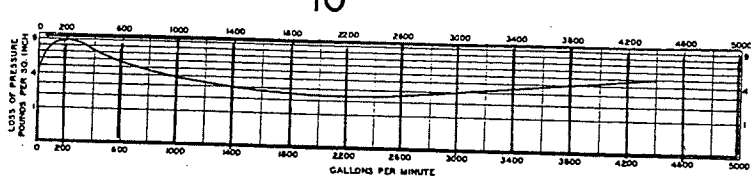
6"

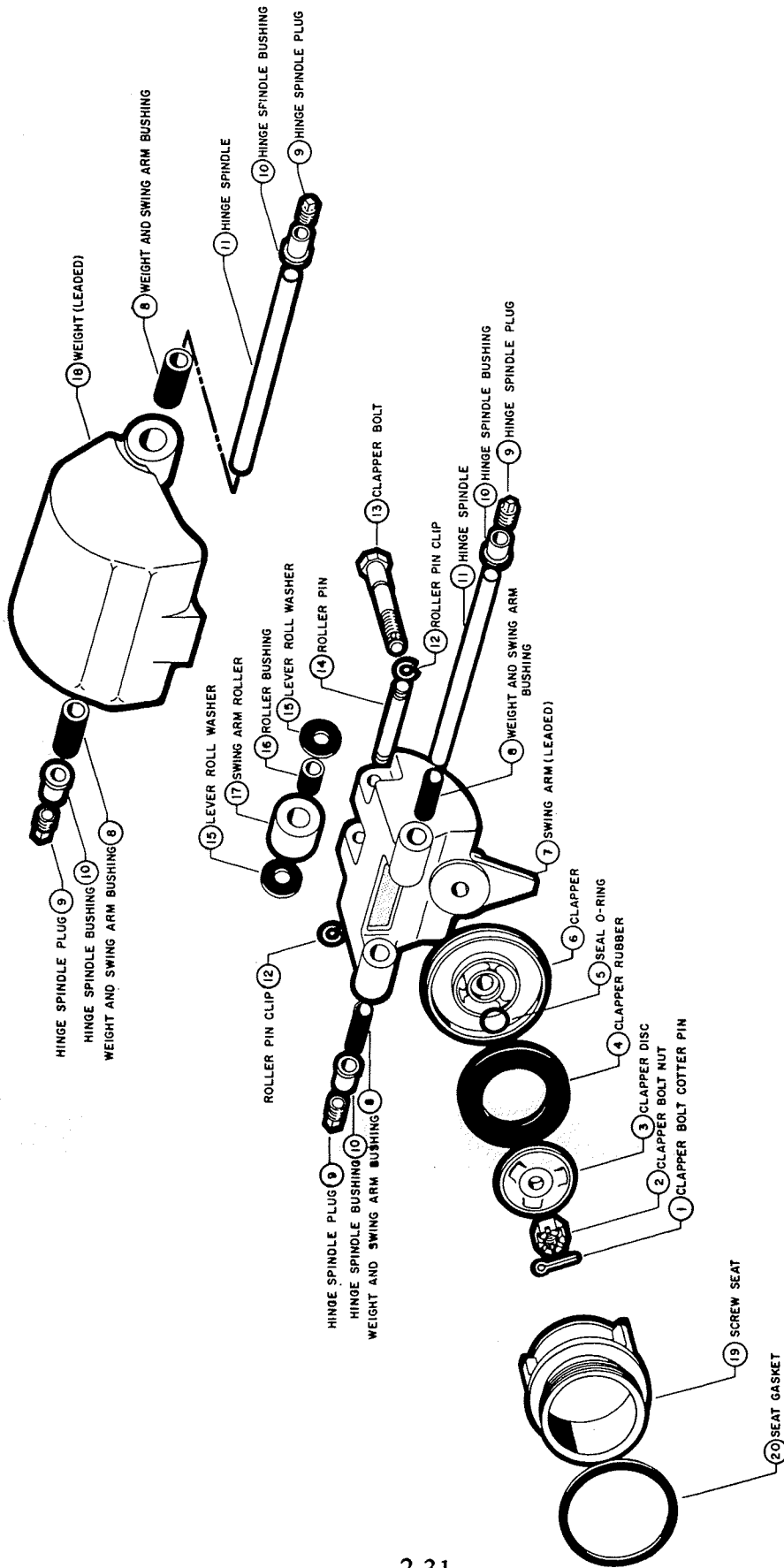


8"



10"





HERSEY NO. 1 CHECK VALVE ASSEMBLY
(2" - 10" x 12" SIZES)