

HERSEY E1

SIZE

4", 6", 8", 10"

DESCRIPTION

This valve is a double check assembly. It was produced from approximately 1975 to 1978. It is a lead weight loaded swing check. The body was made of galvanized cast iron. The check seats are replaceable. A seat removal tool is needed to replace the seats. Internal hardware parts are made mostly of bronze.

BASIC REPAIR KIT

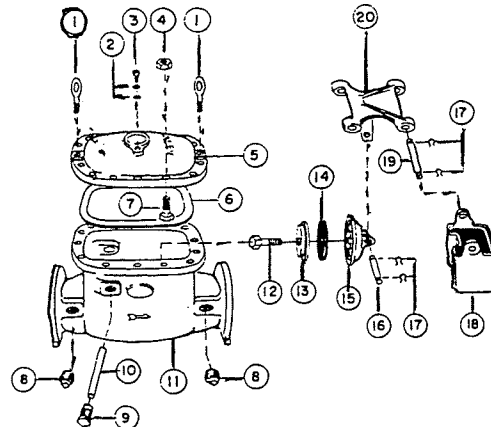
Repair kit contains all rubber discs and cover gaskets

SIZE

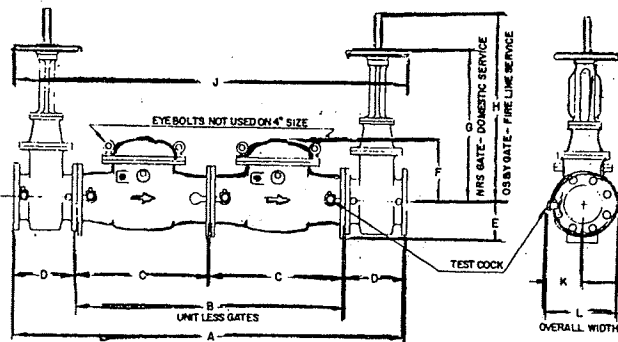
4"
6"
8"
10"

KIT NO

E1400 * ♦
E1600 * ♦
E1800 * ♦
E1001 * ♦



- 1 Eye Bolt
- 2 Air Screw Wshr
- 3 Air Screw
- 4 Nut
- 5 Cover
- 6 Cvr Gskt
- 7 Bolt
- 8 Plug
- 9 Plug
- 10 Pin
- 11 Body
- 12 Bolt
- 13 Disc Ret
- 14 Disc
- 15 Disc Holder
- 16 Pin
- 17 Pin Clip
- 18 Weight
- 19 Pin
- 20 Cross Arm



DIMENSIONS (INCHES)

	4"	6"	8"	10"
A	51-3/16	66-3/16	76-3/16	98-3/16
B	33-1/16	45-1/16	53-1/16	72-1/16
C	16-1/2	22-1/2	26-1/2	36
D	9	10-1/2	11-1/2	13
E	5	6	7-1/2	9-3/4
F	8-1/2	11-3/4	14-7/8	16-3/4
G	18	22-5/16	27-9/16	32-1/4
H (open)	23-1/8	31-11/16	40-3/8	49
J	52-3/16	67-11/16	78-11/16	101-3/16
K	7-1/16	8-1/8	10-1/8	10-5/16
L	12-5/16	14-9/16	18	19-11/16

WEIGHTS (APPROX.)

Gate Valve Type	N.R.S.	O.S.&Y	N.R.S.	O.S.&Y	N.R.S.	O.S.&Y	N.R.S.	O.S.&Y
Net Wgt. Lbs.	438	472	840	880	1440	1516	2422	2550
Gross Wgt. Lbs.	513	547	910	950	1540	1616	2372	2700

SPECIFICATIONS	
BODY	HOT DIPPED GALVANIZED CAST IRON
CLAPPER ARM SHAFTS SEATS	BRONZE STAINLESS STEEL BRONZE, TIN PLATED
MAXIMUM WORKING PRESSURE	175 P.S.I.
TEMPERATURE RANGE	33°-180°F

FLOW CHART

