

CLA VAL RP2

SIZE

3/4", 1", 1 1/4", 1 1/2"

DESCRIPTION

This is a reduced pressure assembly. Production began approximately 1978 and was discontinued in 2003. The assembly is of bronze construction and consists of two poppet type check valves with a pressure differential relief valve. Check and relief valve seats are replaceable. A seat removal tool is needed to change the check seat. The relief valve uses the CDHS 20 design which can be detached from the check body. Most internal RV hardware parts are made of stainless steel. This relief valve can also be mounted on either side of the check body. Check springs are not contained when the cover is removed. The check poppets will be made of either stainless steel or delrin plastic. This model utilizes an internal relief valve sensing line. The relief valve spring was not contained when the relief valve body was disassembled.

BASIC REPAIR KIT

The repair kit contains all rubber discs, diaphragm, rolling diaphragm, gaskets, washers, and O-rings.

<u>SIZE</u>	<u>KIT NO</u>
3/4"-1"	RP2100 *
1 1/4"-1 1/2"	RP2150 *

IMPORTANT FEATURES

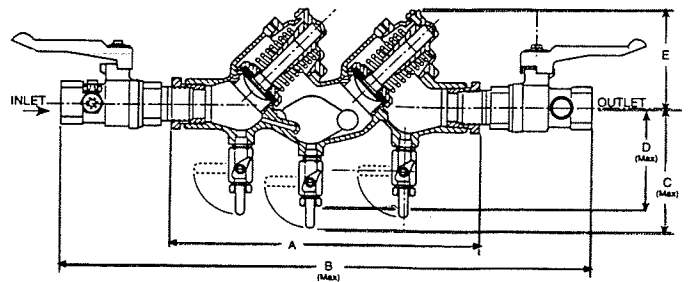
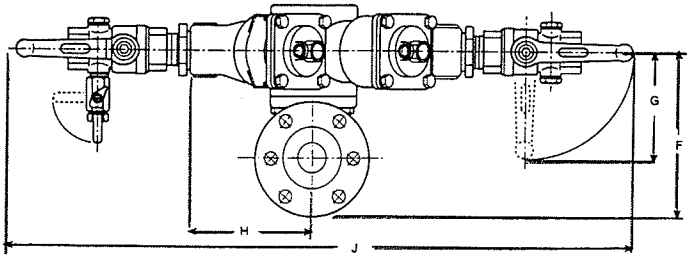
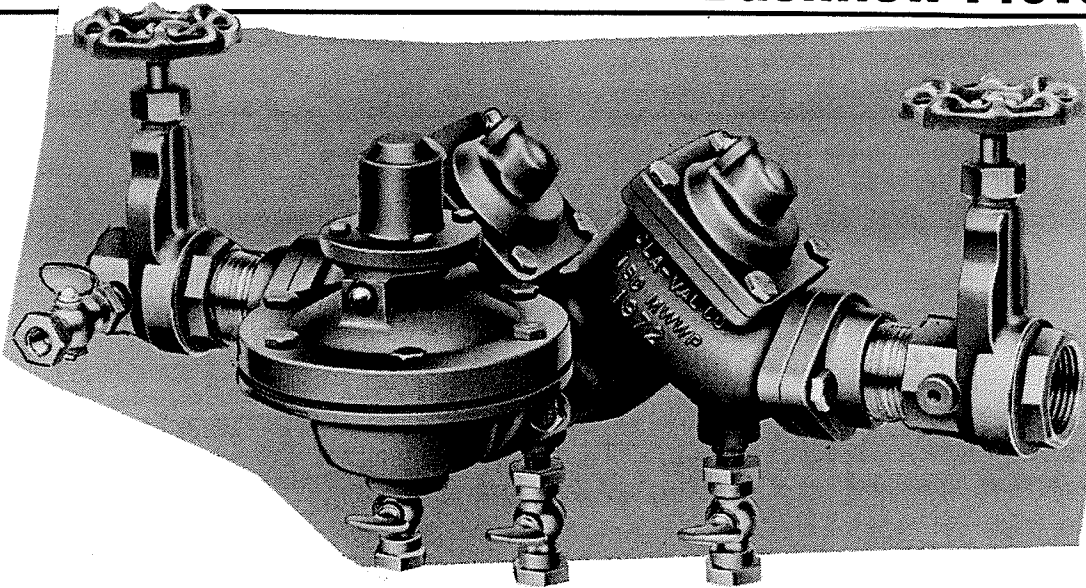
- ~Bronze body*
- ~Replaceable seats*
- ~Springs are not contained*
- ~Detachable RV assembly*
- ~Internal RV sensing line*
- ~Factory repair information enclosed*





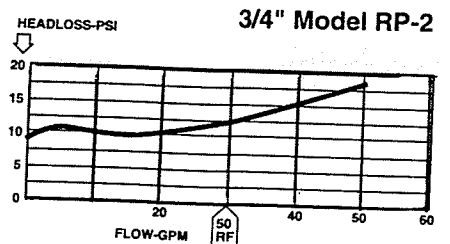
—MODEL— **RP-2**

Reduced Pressure Principle Backflow Preventer

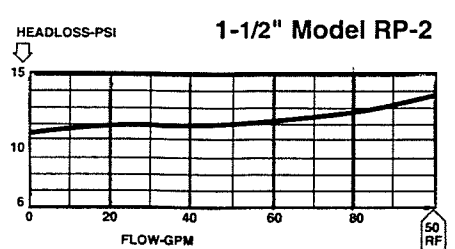
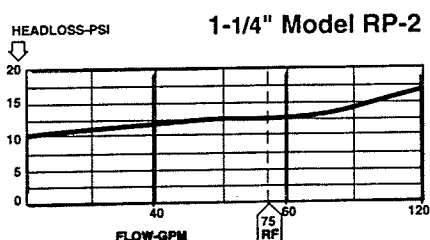
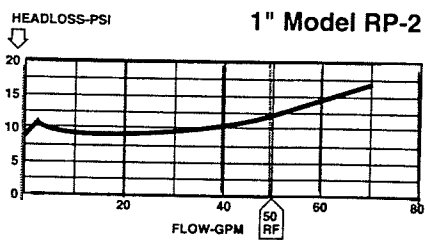


DIMENSION TABLE

VALVE SIZE	A	B	C (MAX)	D (MAX)	E (MAX)	F	G	H (TYP)	J (MAX)
3/4"	10.12	17.06	4.06	3.31	3.00	6.00	3.62	4.09	20.62
1"	9.00	16.81	4.06	3.31	3.00	6.00	4.62	4.09	21.75
1 1/4"	13.25	21.25	4.50	3.75	4.00	6.12	4.44	4.81	26.00
1 1/2"	11.75	21.62	4.50	3.75	4.00	6.12	6.00	4.81	28.38



Flow Curves

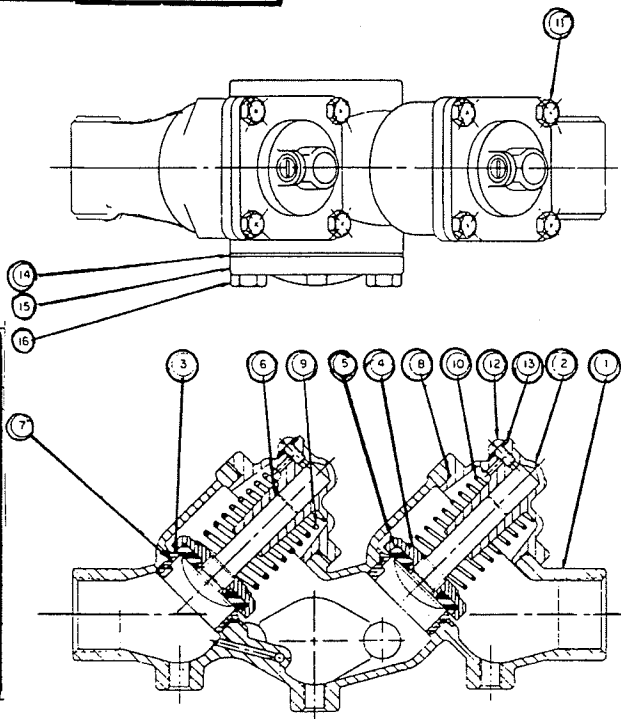


Model RP-2

Sizes 3/4" thru 1 1/2"

POPPET STYLE CHECK

DELFIN CHECK ASSEMBLY

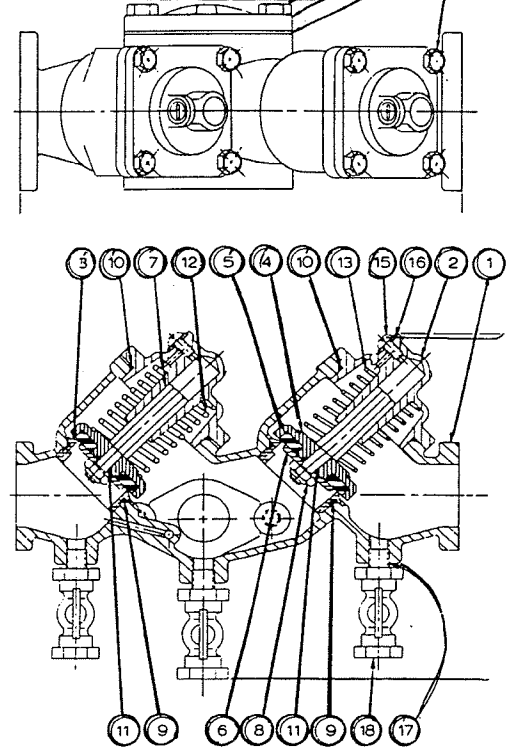


PARTS LIST

ITEM NO	DESCRIPTION
1	Body
2	Cover Assembly
3	Seat
4	Disc Retainer
*5	Disc
6	Stem
7	O-Ring, Seat
*8	O-Ring, Cover
9	Spring, #1 Check
10	Spring, #2 Check
11	Bolt, Hex Head
12	Screw, Round Head
*13	Washer
*14	Gasket
15	Cover, Flange
16	Bolt, Hex Head

*Recommended Spare Parts

STAINLESS STEEL CHECK ASSEMBLY

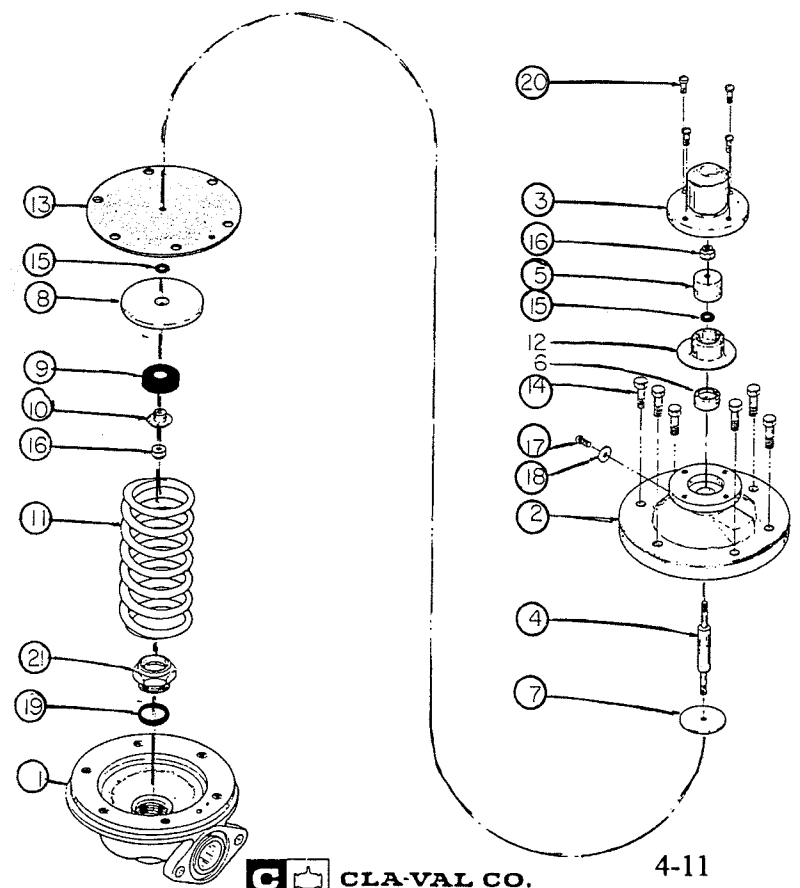


PARTS LIST

ITEM NO.	PART DESCRIPTION
1	Body
2	Cover Assembly
3	Seat
4	Disc Retainer
*5	Disc
6	Disc Guide
7	Stem
*8	Nut, Self-locking
9	O-Ring, Seat
*10	O-Ring, Cover
*11	O-Ring, Stem
12	Spring, #1 Check
13	Spring, #2 Check
14	Bolt, Hex Head
15	Screw, Round Head
*16	Washer
17	Nipple, Close
18	Cock, Plug Type
*19	Gasket
20	Cover, Flange
21	Bolt, Hex Head

*Recommended Spare Parts

EXPLODED VIEW CDHS 20



Clayton 3/4" CDHS-20 PRESSURE DIFFERENTIAL RELIEF VALVE

For Model RP-2 Backflow Preventers in Sizes 3/4" thru 1 1/2"

ITEM NO.	PART DESCRIPTION
1	Body
2	Body Assembly, Intermediate
3	Cover
4	Stem
5	Piston
6	Plate, Retainer
7	Washer, Diaphragm
8	Retainer, Disc
*9	Disc
10	Guide, Disc
11	Spring
*12	Belloram
*13	Diaphragm
14	Screw, Hex Head
*15	O-Ring, Stem
*16	Nut, Self-locking
17	Screw, Round Head
*18	Washer
19	O-Ring, Seat
20	Screw, Fil. Head
21	Seat

*Recommended Spare Parts