

CLA VAL RP4V

SIZE

4", 6", 8"

DESCRIPTION

This model is a reduced pressure assembly. Production began approximately 1990 and was discontinued around 2005. It utilizes the same components as the RP4. The RP4V is a vertical oriented assembly. It splits the check bodies and with the specially located elbows it allows the piping in and out of the assembly to facilitate a vertical orientation.

BASIC REPAIR KIT

The repair kit contains all rubber discs, diaphragm, rolling diaphragm, cover seals, O-rings, and washers.

<u>SIZE</u>	<u>KIT NO</u>
4"	RP4400 *
6"	RP4600 *
8"	RP4800 *

IMPORTANT FEATURES

~See Model RP4

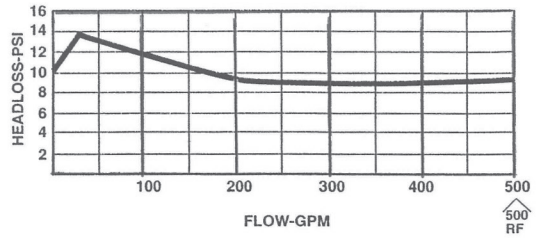
~Vertical orientation for installation



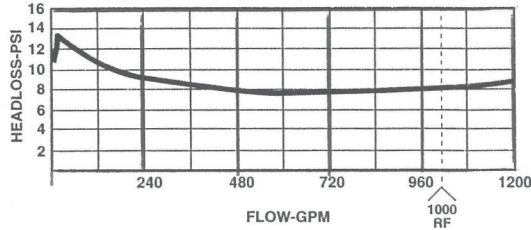
RP-4V

Reduced Pressure Principle Backflow Preventer Flow Curves

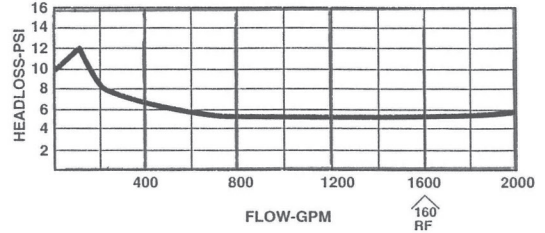
4" MODEL RP-4V



6" MODEL RP-4V

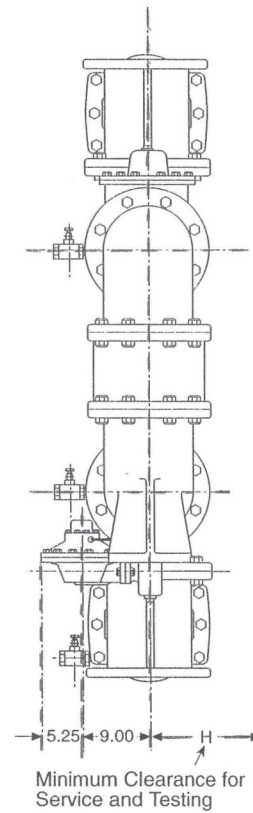
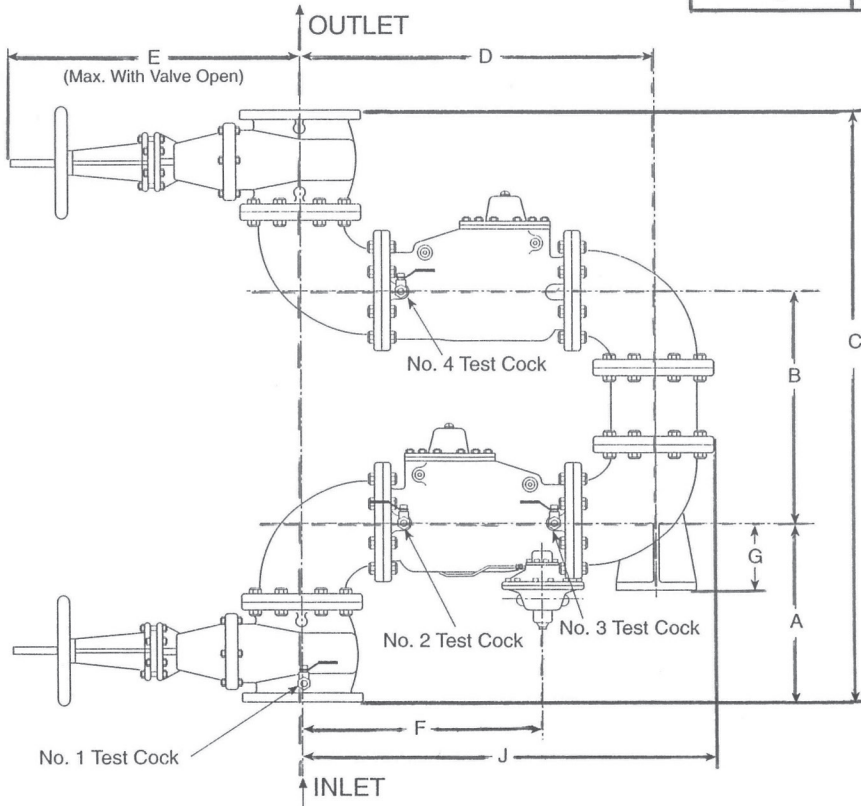


8" MODEL RP-4V



Dimensions (In Inches)

DIMENSION TABLE									
DIM	A	B	C	D	E	F	G	H	J
Valve Size 4"	15.56	23.13	54.25	28.13	22.75	18.16	5.50	16.50	32.63
6"	18.56	26.13	63.25	36.13	30.13	23.63	7.00	17.50	41.63
8"	20.56	28.13	69.25	43.50	37.75	28.69	8.75	18.75	50.25



Specifications

Sizes:

4", 6", 8"

End Detail:

125 ANSI B16.1

Maximum Working Pressure:

175 psi

Hydrostatic Test Pressure:

350 psi

Max. Temperature:

to 110° F

Fluid:

Water

Material:

Main Valve Body and Cover:

Cast Iron ASTM A-126 interior epoxy coated

Main Valve Trim:

Bronze ASTM B-61

Differential Relief Valve:

Bronze ASTM B-61 with Stainless Steel 316 Trim

Shut-off Valves:

Resilient Seat Outside Stem and Yoke Type, Epoxy Coated Interior and Exterior AWWA C550

