

# CONBRACO

## 4D-600/ DCDA-4D SERIES

### SIZE

2 1/2", 3", 4", 6", 8", 10"

### DESCRIPTION

This is a double check detector assembly Type II. Production began in 2003 and was discontinued in 2009. The mainline assembly is similar to the model 4D-100. The bypass is a single check (not double check) valve.

### BASIC REPAIR KIT

Mainline repair kit contains discs and O'rings.

<u>SIZE</u>	<u>KIT NO</u>
2 1/2"-4"	4D-100-30 * ◆
6"	4D-100-60 * ◆
8-10"	4D-100-80 * ◆

Bypass repair kit contains check module and O'rings.

<u>SIZE</u>	<u>KIT NO</u>
3/4"	4D-600-075 * ◆

### IMPORTANT FEATURES

- ~ Mainline assembly 4D-100 series
- ~ Bypass is a single check
- ~ Factory repair information enclosed



### MATERIALS

Body & Cover — Fusion Bonded Epoxy Coated  
 Ductile Iron (mainline)  
 Bronze (by-pass)

Test Cocks — Stainless Steel (mainline)  
 Bronze (by-pass)

Check Components — Stainless Steel (mainline)  
 Acetal (by-pass)

Springs — Stainless Steel

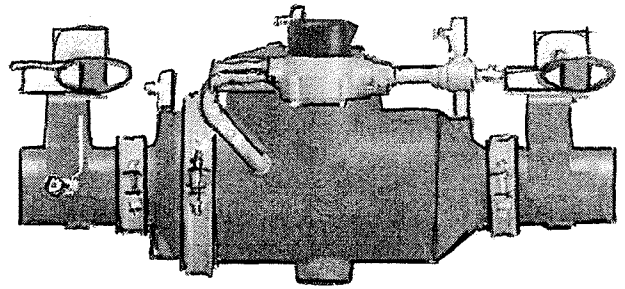
Seat Discs — Silicone Rubber

Fasteners — Stainless Steel

Elbows — Fusion Bonded Epoxy Coated  
 Ductile Iron

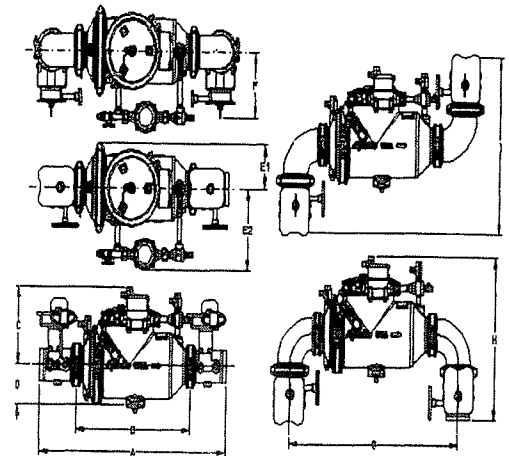
### DOUBLE CHECK DETECTOR ASSEMBLY

Sizes 2 1/2", 3", 4" & 6"



- Maximum Working Pressure 175 PSI
- Operating Temperature Range 33-140°F
- U.S. Patent #6,443,184 B1 (other patents pending)

Size	Dimensions (in) - Weights (lbs.)					
	2 1/2"	3"	4"	6"	8"	10"
A (Butterfly Valves)	33 3/8	33 7/8	35	38 1/2	48	52 1/4
A (Gate Valves)	35 1/2	37 1/2	39 7/8	45 5/8	55	59
B	21 3/8	21 3/8	21 3/8	24 1/2	32	32
C (With Butterfly Valves)	10 5/8	10 5/8	10 5/8	13	15	15
C (OS&Y Valves Open)	17	19	22 3/4	30 1/8	38	46
D	6 1/2	6 1/2	6 1/2	7 1/2	10	10
E1 (center to coupling edge)	6 1/2	6 1/2	6 1/2	7 3/4	10	10
E2 (center to by-pass edge)	11	11	11	11	14 1/2	14 1/2
F (w/Elbows & Butterfly Valves)	8	8 1/2	9 1/4	10 1/4	12 3/4	14 1/2
F (w/Elbows & OS&Y Vals OPEN)	27 1/4	28 1/4	29 3/4	34 1/4	38	46
G	27 3/8	28 1/8	29 3/4	35 1/2	46	50 1/4
H "U" Flow (with Butterfly Valves)	20 3/8	21 1/8	22 3/8	26 1/2	29 3/4	34
H "U" Flow (with OS&Y Valves)	21 7/8	22 7/8	24 5/8	30	33 1/2	37 1/4
I "Z" Flow (with Butterfly Valves)	19 1/2	21	23 1/4	27	30	38
I "Z" Flow (with OS&Y Valves)	22 1/2	24 1/2	28	34	37	44 1/4
Test Cocks	1/2 NPT	1/2 NPT	1/2 NPT	3/4 NPT	3/4 NPT	3/4 NPT
Net Wt. (Less Gate Valves)	108	109	114	197	405	410
Net Wt. (w/Butterfly Valves)	131	133	163	280	527	592
Net Wt. (w/OS&Y Valves)	218	248	329	520	761	1174
Net Wt. (w/Elbows & Butterfly Vals)	140	145	183	297	569	700
Net Wt. (w/Elbows & OS&Y Valves)	227	261	349	558	803	1282



MODEL 4D-600 SERIES  
Flow Curves with Butterfly Valves

(e) Rated flow as determined by ASSE design performance standards.

