

# CONBRACO

## 4S-100/ DC/ DC-4S

### DC-4SG SERIES

#### SIZE

1/2", 2 1/2", 3", 4", 6", 8", 10"

#### DESCRIPTION

This is a double check assembly. Production began in 1998. Sizes 2 1/2"-8" were discontinued in 2014. The 4S-100 or the DC designation may be on the assembly. Both model numbers are used. The 1/2" assembly utilizes a bronze body design. The checks are a modular in-line design. The check modules are not field repairable and must be replaced as a whole check module. The body on 2 1/2"-10" are constructed of ductile iron which is fused epoxy coated. The 2 1/2"-6" checks are a swing style and are modular in construction and made of glass filled noryl. The check disc is replaceable. The check springs are contained when the cover is removed. The 8"-10" checks are modular in construction and made of bronze. The check springs are contained when the cover is removed. In 2008 the DC-4SG Model was produced in 2 1/2"-8". The G designation referred to the groove end check body as opposed to the flanged end body. All internal repair parts are the same. There were some dimensional differences between the flanged and grooved end units.

#### BASIC REPAIR KIT

Repair kit contains all rubber discs, O-rings, and gasket except the 1/2" which contains both check modules and O-rings.

#### SIZE

1/2"  
2 1/2"-6"  
8"- 10"

#### KIT NO

4S-003-01  
4S-100-30 \*  
4S-100-80 \*

#### IMPORTANT FEATURES

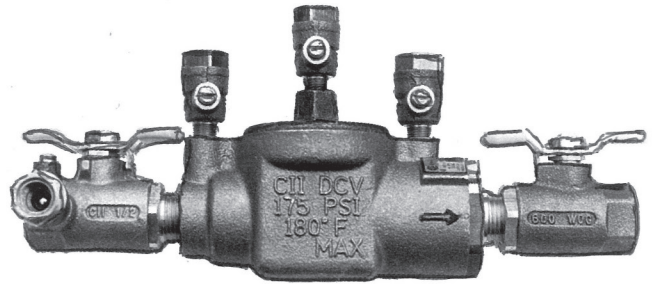
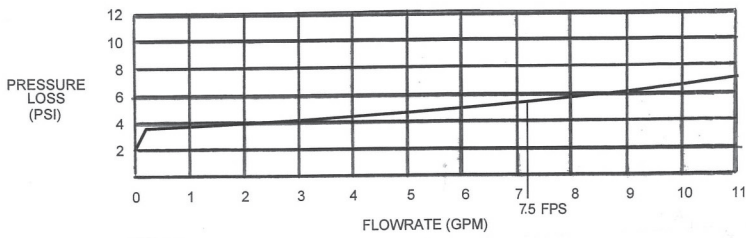
- ~Modular check
- ~Contained springs
- ~Factory repair information enclosed



**TOP ENTRY DOUBLE CHECK VALVE ASSEMBLY  
SIZE 1/2"**

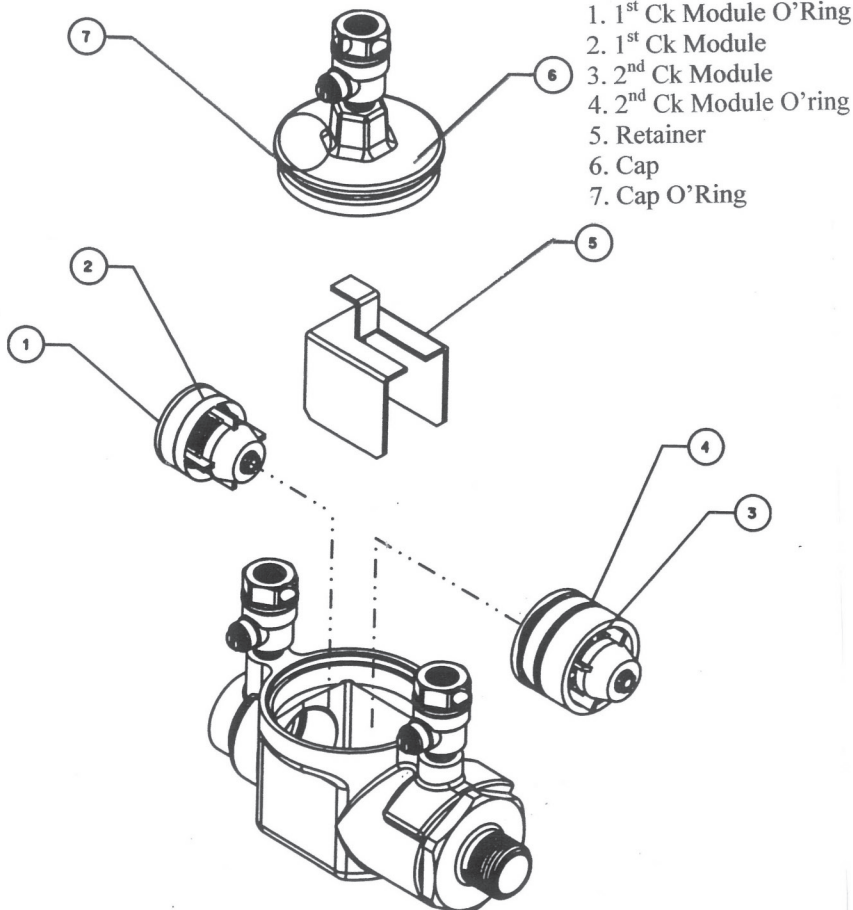
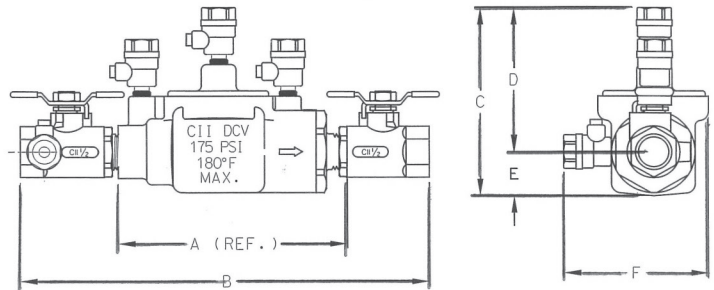
# Model DC

## FLOW CURVE



## DIMENSIONS (IN.)—WEIGHTS (LBS.)

Body Size	1/2"
A (w/o Ball Valves)	5-5/8
B	9-3/4
C	4-1/2
D	3-1/2
E	1
F	3-5/8
Net Wt. (w/o Ball Valves)	2.68
Net Wt. (with Ball Valves)	4.38
Shipping Wt. (w/o Ball Valves)	3.8
Shipping Wt. (with Ball Valves)	5.1

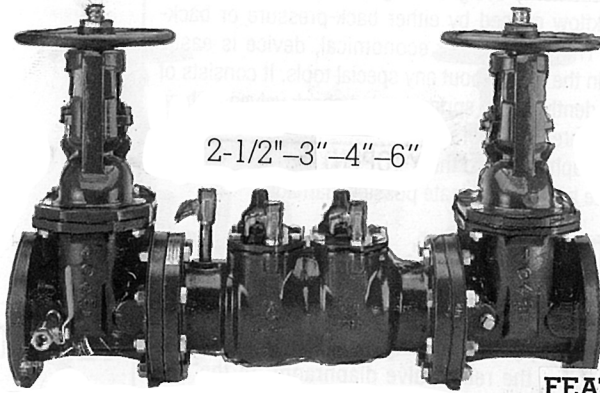


## FEATURES

- Corrosion resistant
- Easy to install, repair and maintain
- Low head loss
- Replaceable check modules
- Comes standard with "Apollo" full-port ball valves
- Maximum working pressure 175 psig
- Operating temperature range 33°F-180°F

## MATERIALS

Body and Cover	Bronze
Check Modules	Acetal w/Stainless Steel Springs
Spacer	Stainless Steel



2-1/2" - 3" - 4" - 6"

### MATERIALS 2 1/2 - 6"

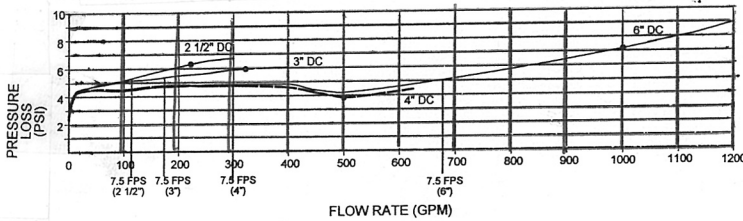
1. Body	Epoxy Coated (FDA Approved) Ductile Iron
2. Covers	Epoxy Coated Steel
3. Springs	Stainless Steel
4. Seats	Glass Filled Noryl
5. C.V. Discs	EPDM
6. Fasteners	Stainless Steel

### FEATURES

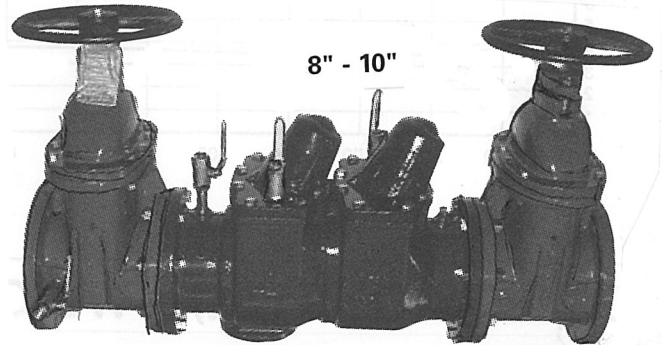
- Corrosion resistant
- Replaceable discs
- Low head loss
- Economical
- Short lay length
- Lightweight
- Designed for easy maintenance
- Interchangeable check valve assemblies
- Maximum working pressure 175 psi
- Operating temperature range 33-140°F

FLOW CHART 2-1/2" - 6"

(\*) Rated Flow as determined by USC's FCC&HR and ASSE design performance standards.



Curves as Recorded at Underwriters Laboratory



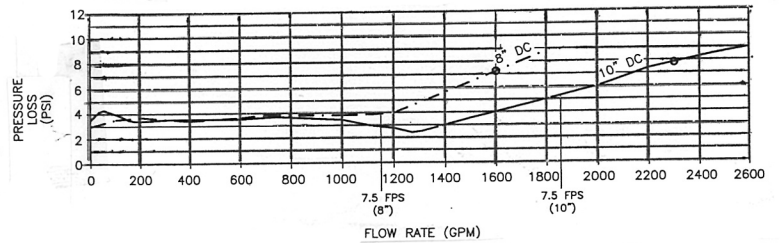
8" - 10"

### MATERIALS 8 - 10"

1. Body & Covers	Epoxy Coated Ductile Iron (FDA approved)
2. Springs	Stainless steel
3. Seats	Cast bronze
4. C.V. Discs	EPDM
5. Fasteners	Stainless steel

FLOW CHART 8" - 10"

(\*) Rated Flow as determined by USC's FCC&HR and ASSE design performance standards.



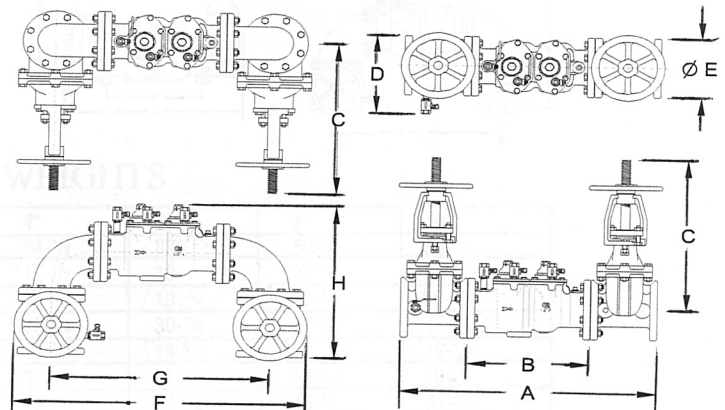
Curves as Recorded at Underwriters Laboratory (Horizontal Position)

### Flanged End Check Body Unit

#### DIMENSIONS (in.) - WEIGHTS (lbs.)

Size	2 1/2"	3"	4"	6"	8"	10"
A*	32 1/4	33 1/4	34 3/4	39 1/4	50 1/4	55 3/4
B* (Flanged-end body)	17	17	16 1/2	18	27	29 1/2
C (NRS)	11 3/4	12 3/4	14 3/4	19	22 1/2	26 1/2
C (OS&Y Open)	17	19	22 3/4	30 3/4	38	46
D	9 3/4	10 3/4	11 3/4	14 3/4	17	19 1/2
E	7	7 1/2	9	11	13 1/2	16
F	34 3/4	38 3/4	39 3/4	46 3/4	59 3/4	69 3/4
G	27 1/4	28 1/4	29 3/4	34 1/4	45 1/4	51 1/4
H	19 3/4	20 3/4	22 3/4	25 3/4	34 3/4	39 1/2
Test Cocks (NPT)	1/2	1/2	1/2	3/4	3/4	3/4
Net Wt. (Less Valves)	67	71	77	95	420	470
Net Wt. (w/ OS&Y shut-off valves)	173	205	275	407	920	1320
Net Wt. (w/ OS&Y valves & elbows)	209	256	360	542	1148	1693

\* Nominal dimensions are shown. Allowances must be made for manufacturers' tolerances.

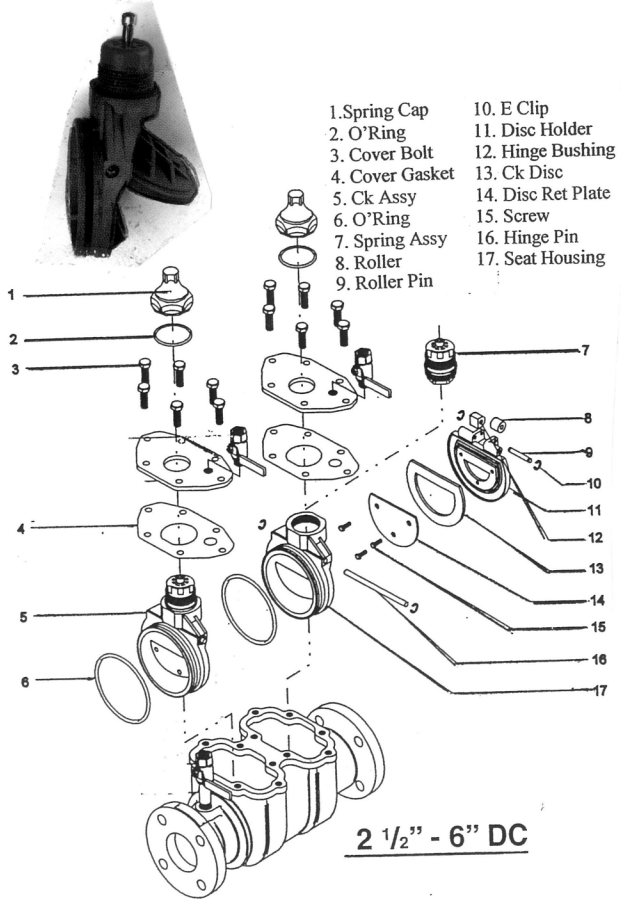
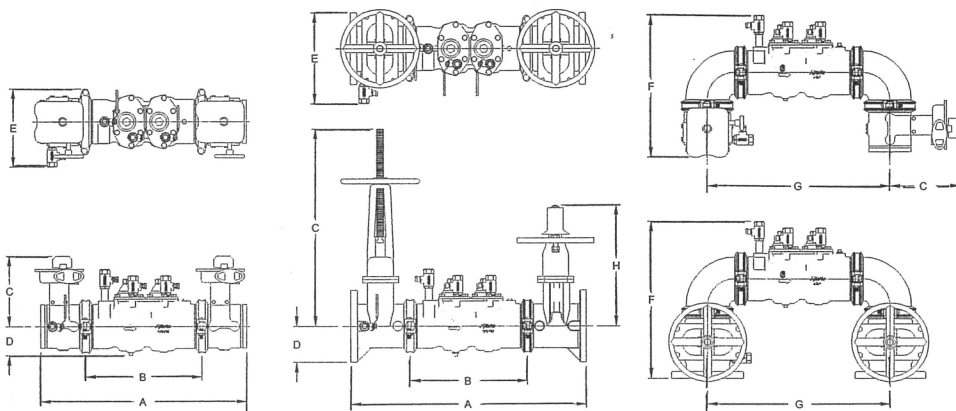


### Grooved End Check Body Unit

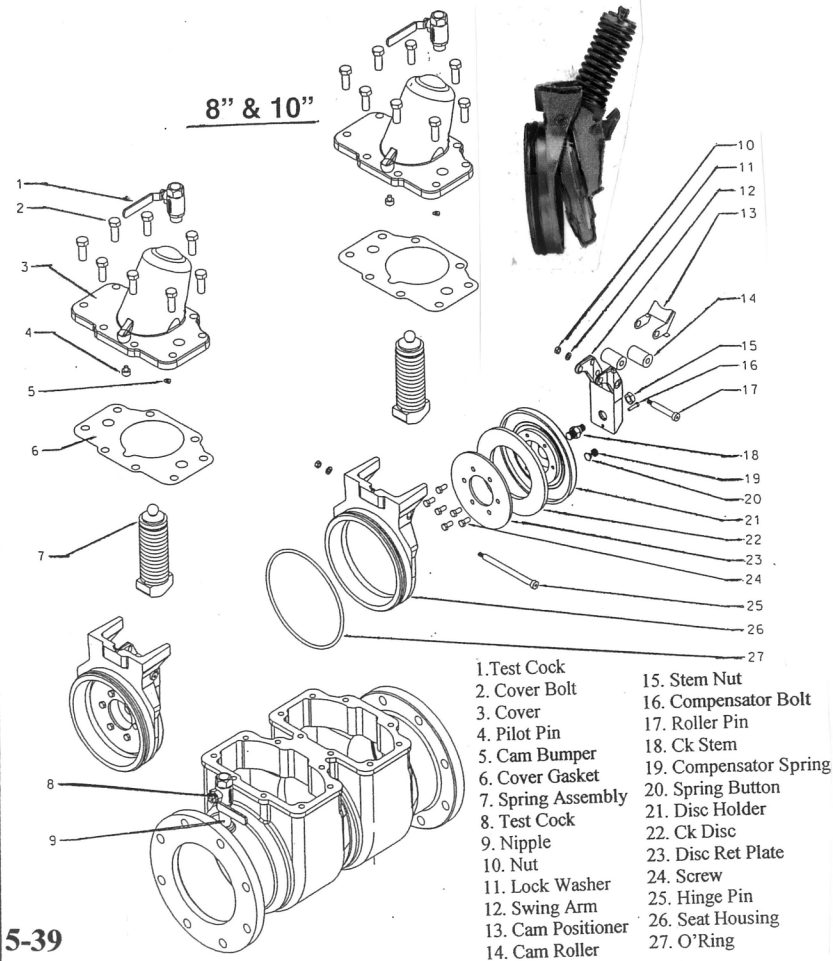
Size	2 1/2"	3"	4"	6"	8"
A (Butterfly Valves)*	29	29 1/2	29 3/4	32 1/2	43
A (Gate Valves)*	32	33	34 1/2	39	50
B (Grooved-end body)	17	17	16 1/2	18	27
C (Butterfly Valves)	8	8 1/2	9 1/4	10 1/4	12
C (OS&Y Open)	16 3/8	18 3/8	22 3/4	30 1/8	37 3/4
D (Butterfly Valves)	4 1/2	4 1/2	4 1/2	4 1/2	6 1/2
D (Gate Valves)	3 1/2	3 3/4	4 1/2	5 1/2	6 3/4
E (Butterfly Valves)	9	9	9 1/2	12	15
E (Gate Valves)	9 5/8	10 3/8	11 1/8	14 1/8	16 3/4
F (Butterfly Valves)	18 1/2	19 1/4	20 3/4	22 1/2	31
F (Gate Valves)	20	21	23	26	34 3/4
G	23	23 3/4	24 1/2	29	40 3/4
H (Post Indicator)	Not Avail.	12 3/8	14 3/4	19	22 1/2
Test Cocks (NPT)	1/2	1/2	1/2	3/4	3/4
Net Wt. (Less Valves)	53	53	53	60	375
Net Wt. (w/ Butterfly Valves)	80	83	97	128	506
Net Wt. (w/ OS&Y Gate Valves)	149	174	208	309	852

Notes:

- Nominal dimensions are shown. Allowances must be made for manufacturers' tolerances.
- Internal body connections are grooved on 2 1/2" – 8" sizes.



2 1/2" - 6" DC



5-39