

FEBCO 760

SIZE

1/2", 3/4", 1", 1 1/2", 2"

DESCRIPTION

This was a pressure vacuum breaker. The unit was produced from approximately 1950 to 1975. It was a bronze bodied unit. Most internal parts are made of bronze. The assembly was not in-line repairable and had to be disassembled to repair it. The original model numbers were different for each size. Some may still have these older original model numbers on them: Model 610: 1/2" and 3/4", Model 620: 1 1/2"-2" size. The spring was not contained when the body was disassembled. The seats were not replaceable.

BASIC REPAIR KIT

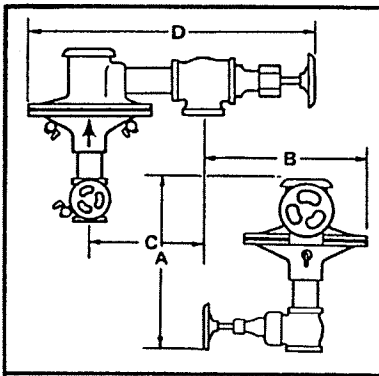
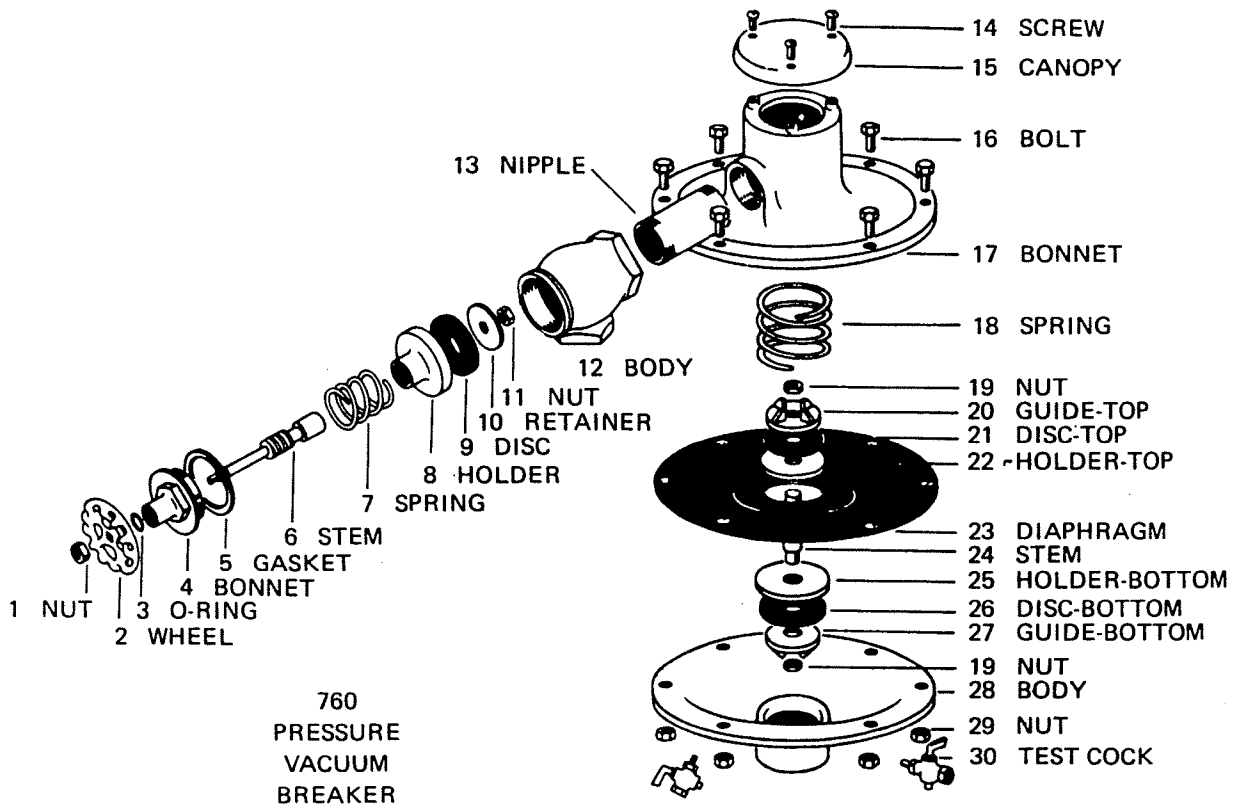
The repair kit contains diaphragm, and rubber discs.

<u>SIZE</u>	<u>KIT NO</u>
1/2"-3/4"	760050 *◆
1"	760100 *◆
1 1/2"-2"	760200 *◆

IMPORTANT FEATURES

- ~ *Bronze body*
- ~ *Not in line repairable*
- ~ *Check seat is not replaceable*
- ~ *Check springs are not contained*





DIMENSIONS AND WEIGHTS

760	A	B	C	D	Weight
1/2"	7 3/4"	4"	4 3/4"	9 1/4"	10
3/4"	8"	4 1/2"	5"	10 1/4"	10
1"	8 3/4"	5"	5 1/2"	11"	13
1 1/2"	13"	7 1/4"	8"	17 1/4"	34
2"	12"	8"	7"	18"	36

FLOW LOSS CHART

