

FEBCO 766

SIZE

1/2", 3/4", 1"

DESCRIPTION

This is a pressure vacuum breaker assembly. Production began in 1998 and was discontinued in 2003. This model utilizes a bronze body and contains a replaceable check seat. The check spring is contained when the bonnet is removed. The test cocks are mounted on the shut-off valves instead of the valve body.

BASIC REPAIR KIT

The repair kit contains discs and O-rings

| <u>SIZE</u> | <u>KIT NO</u> |
|-------------|---------------|
| 1/2"-3/4" | 905360 ♦ |
| 1" | 905361 ♦ |

IMPORTANT FEATURES

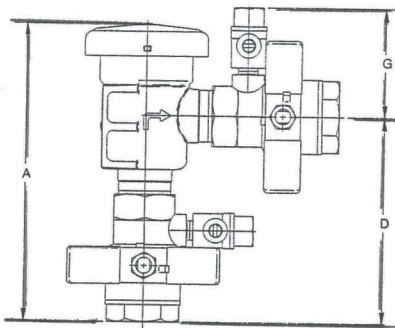
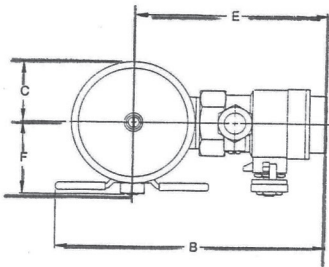
- ~Replaceable check seat
- ~Bronze body
- ~Test cocks mounted on shut-off
- ~Factory repair information enclosed



SPECIFICATION SHEET MODEL 766

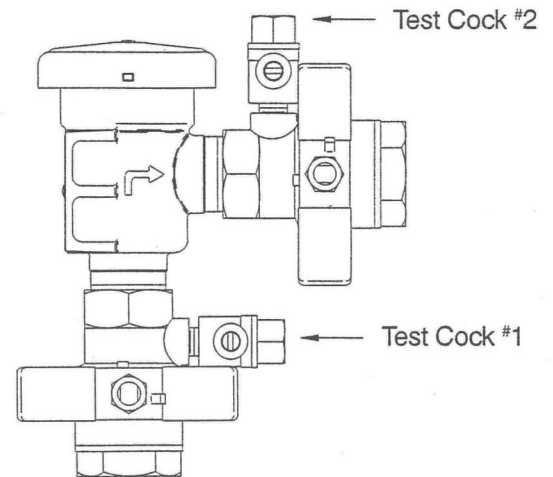


PRESSURE VACUUM BREAKER



Characteristics and Materials

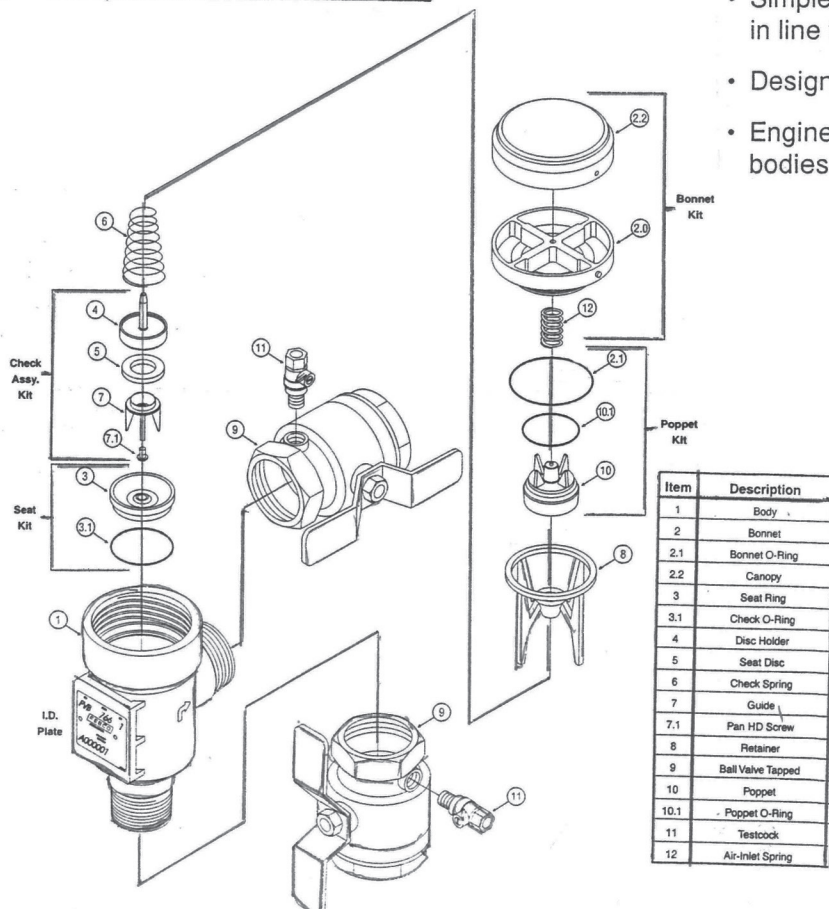
| | |
|---------------------------|-----------------------------|
| Maximum working pressure | 150 psi (1034 KPa) |
| Hydrostatic test pressure | 300 psi (2069 KPa) |
| Temperature range | 32°F to 140°F (0°C to 60°C) |
| Fluid | Water |
| End detail | Threaded ANSI B2.1 |
| Main valve body | Bronze |
| Elastomers | Silicone |



Features

- Available in 1/2", 3/4", and 1".
- All bronze body for durability. One check valve and an air opening port in one assembly.
- Lightweight poppet seals air opening under minimum flow conditions.
- Simple service procedures. All internal parts serviceable in line from the top of the unit.
- Designed for minimum head loss.
- Engineered plastic bonnet and poppet protect valve bodies from freeze damage.

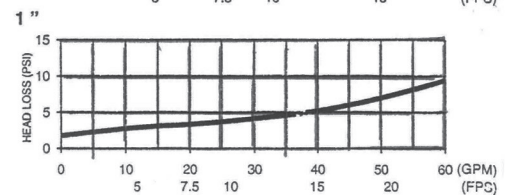
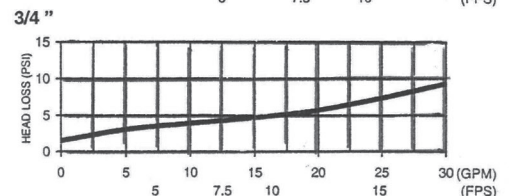
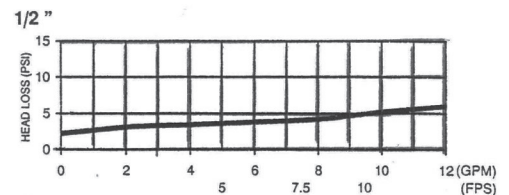
| (U.S. - Inches) | | | | | | | | |
|-----------------|-------|-------|-------|-------|-------|-------|-------|-----|
| SIZE | A | B | C | D | E | F | G | Lbs |
| 1/2 | 6 | 5 1/6 | 1 1/4 | 4 | 3 7/8 | 1 4/9 | 2 3/8 | 2.4 |
| 3/4 | 6 2/7 | 5 3/4 | 1 1/4 | 4 1/4 | 4 1/6 | 1 5/8 | 2 3/8 | 3.0 |
| 1 | 7 2/7 | 6 1/2 | 1 2/3 | 5 | 4 3/4 | 1 6/7 | 2 3/7 | 5.0 |



| Item | Description |
|------|-------------------|
| 1 | Body |
| 2 | Bonnet |
| 2.1 | Bonnet O-Ring |
| 2.2 | Canopy |
| 3 | Seat Ring |
| 3.1 | Check O-Ring |
| 4 | Disc Holder |
| 5 | Seat Disc |
| 6 | Check Spring |
| 7 | Guide |
| 7.1 | Pan HD Screw |
| 8 | Retainer |
| 9 | Ball Valve Tapped |
| 10 | Poppet |
| 10.1 | Poppet O-Ring |
| 11 | Testcock |
| 12 | Air-Inlet Spring |

Model 766 Flow Curves

Documented flow curve established by the Foundation for Cross-Connection Control and Hydraulic Research at the University of Southern California.



FLOW RATE (GPM)
VELOCITY (FPS)