

# FEBCO 830

## SIZE

2 1/2", 3", 4", 6", 8", 10"

## DESCRIPTION

This is a double check assembly. Production began in 2000 and was discontinued in 2007. The body is made of ductile iron that is fused epoxy coated. The checks are modular in construction and are removed from the single access cover. The assembly comes with an integral butterfly valve for the shut-offs.

## BASIC REPAIR KIT

The repair kit contains check discs and O-rings.

<u>SIZE</u>	<u>KIT NO</u>
2 1/2"-3"	830250 *◆
4"	905465 ◆
6"	830600 *◆
8"	830800 *◆
10"	830001 *◆

## IMPORTANT FEATURES

*~Integral butterfly shut-off*

*~Modular construction*

*~Factory repair information enclosed*



# SPECIFICATION SHEET MODEL 830 (2 1/2" - 10")



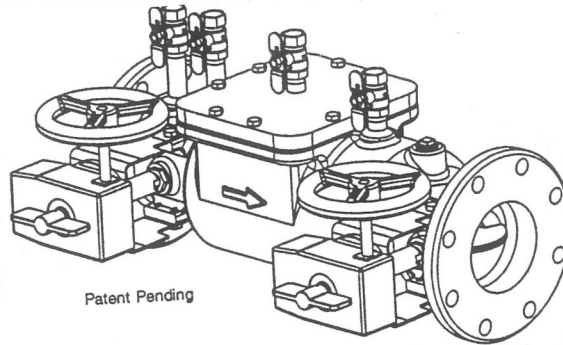
## BACKFLOW PREVENTION

### Features

- Short lay length
- Integral butterfly shut-offs
- Low head loss
- Light weight
- Low Lead
- Modular check design
- Easy to service and install
- Top entry and upward facing testcocks for ease of testing and maintenance.

### Options

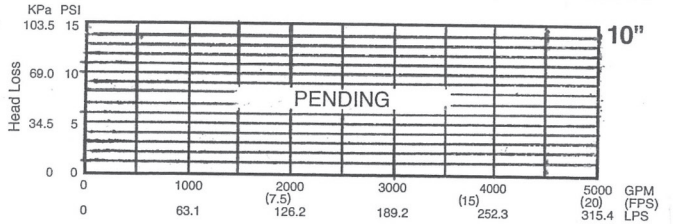
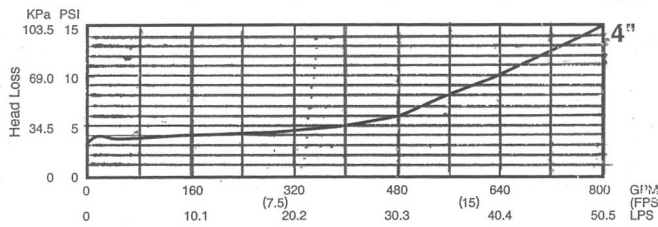
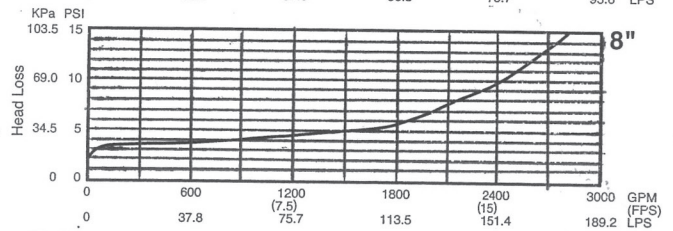
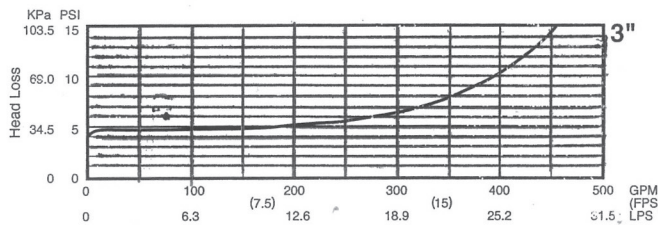
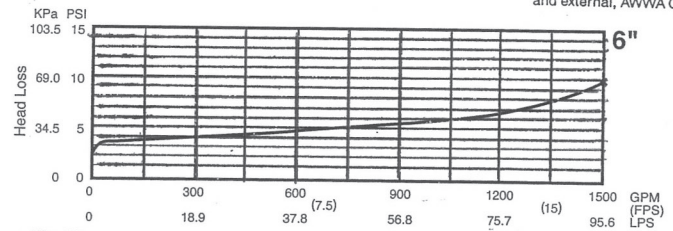
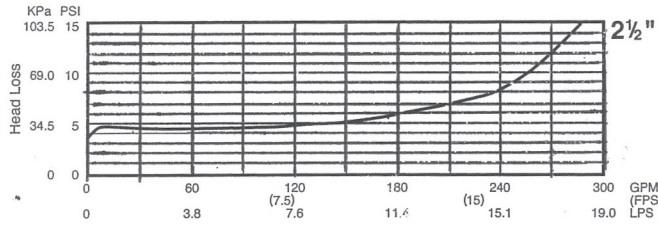
- Hand-Lever Operator
- Gear Operator
- Gear Operator with Tamper Switch



## DOUBLE CHECK ASSEMBLY

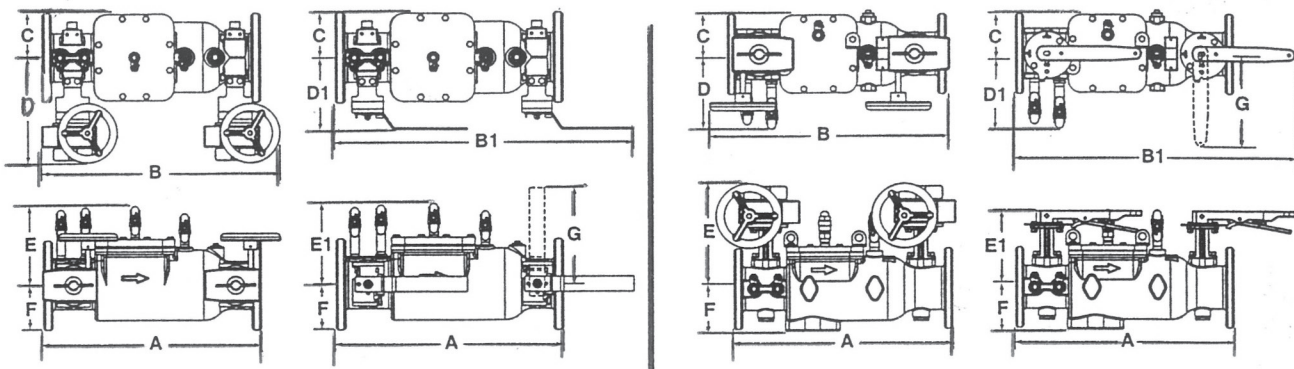
### Characteristics and Materials

- Maximum Working Pressure: 175 PSI (1200 KPa)
- Hydrostatic Test Pressure: 350 PSI (2400 KPa)
- Temperature Range: 32°F to 140°F (0°C to 60°C)
- Fluid: Water
- End Detail: Flanged ANSI B16.1 Class 125 Din PN-16 AS 2129 Style "E" (optional) Groove per AWWA C606 steelpipe size
- Main Valve Body: Ductile iron ASTM A-536 grade 65-45-12
- Main Valve Trim: Stainless steel
- Internal Check Modules: Stainless steel
- Elastomers: Silicone rubber
- Springs: Stainless steel
- Shut-Off Valves: Rubber seated internal butterfly valves: handlever, gear and gear with tamper switch available.
- Coating: Fusion epoxy coated internal and external, AWWA C550-90.



4" Model 830H

2 1/2", 3", 6", 8", 10" Model 830



Size	U.S. - INCHES										Weight	
	A	B* GEAR	B1 LEVER	C	D* GEAR	D1 LEVER	E* GEAR	E1 LEVER	F	G	GEAR* (lbs.)	LEVER (lbs.)
2 1/2"	20	22	25 5/8	3 3/4	7	7	10	7 5/8	4 1/2		122	103
3"	20	22	25 5/8	3 3/4	7	7	10	7 5/8	4 1/2		122	103
4"	22	24	29	4 1/2	8	8	10 5/8	10 5/8	4 1/2	9 1/2	140	125
6"	27 1/2	32	38 1/2	5 3/4	8 1/2	8 1/2	16 1/4	10 1/2	6 1/2	14	246	225
8"	34	35	44	7 1/2	10	10	14 1/2	12	8	14	360	340
10"	Pending											

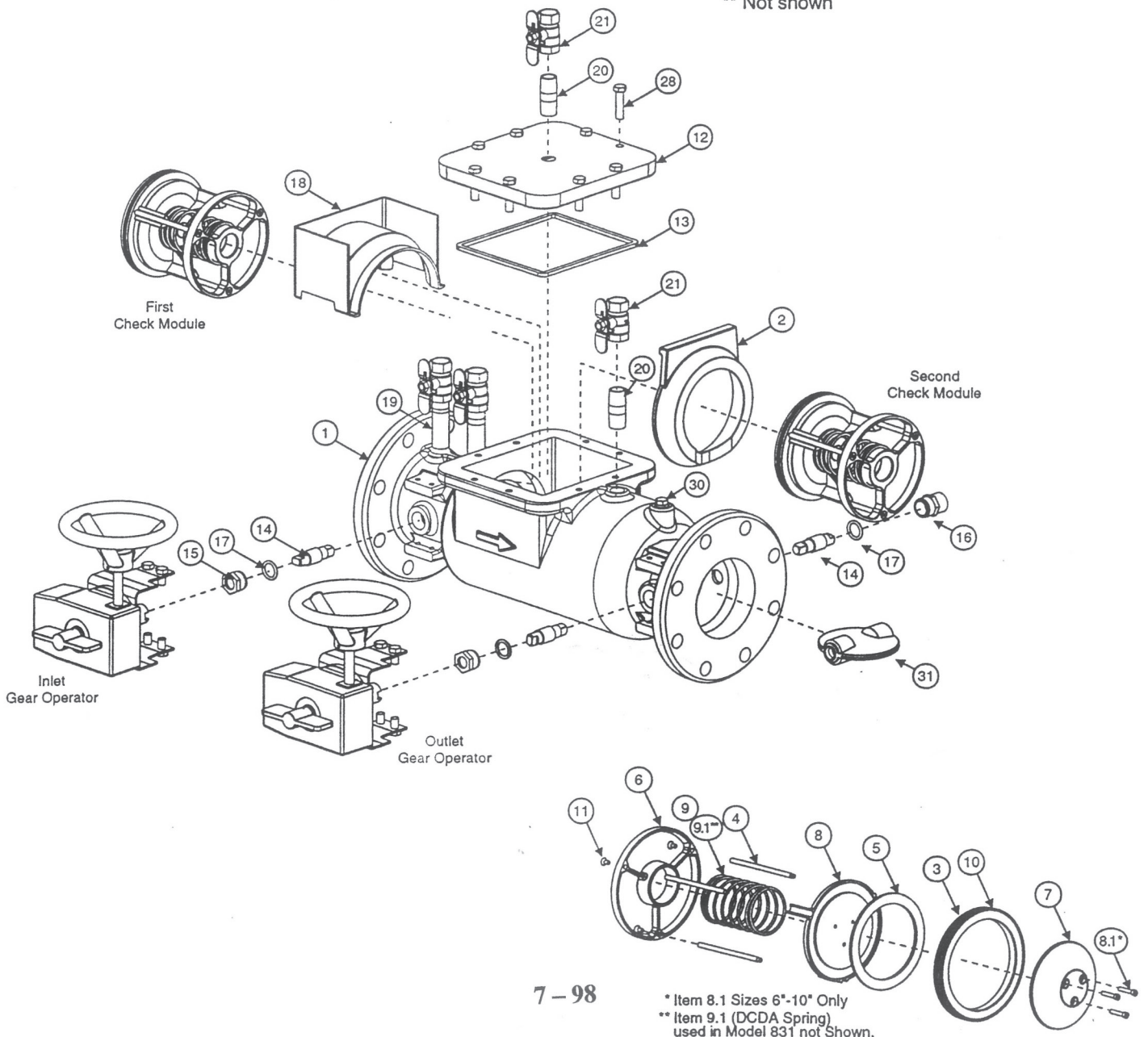
Weights shown are approximate.  
Dimensions shown are nominal, allowances must be made for normal manufacturing tolerances.

# MODEL 830 / 831 (2 1/2" - 10")

Item	Description	Quantity
1	Body	1
2	Spacer	1
3	Seat Ring	2
4	Guide Shaft	6
5	Seat Disc	2
6	Outlet Cage	2
7	Disc Retainer	2
8	Disc Holder	2
8.1*	Cap Screws	3
9	Spring	2
9.1**	DCDA Spring (1" Check Only)	2
10	O-Ring	2
11	Cap Screw	6
12	Cover	1

Item	Description	Quantity
13	Cover Seal	1
14	Disc Stem	4
15	Stem Bushing	2
16	Stem Cover	2
17	O-Ring	4
18	Flow Insert	1
19	Nipple 3.5"	2
20	Nipple 2"	2
21	Ball Valve	4
28	Hex Cap Screws	8
30	Pipe Plug	1
31	Disk	2
32	Key	2

Some parts only available in kits.  
 \* Sizes 6"-10" only  
 \*\* Not shown



\* Item 8.1 Sizes 6"-10" Only  
 \*\* Item 9.1 (DCDA Spring) used in Model 831 not Shown.