

FEBCO 858

SIZE

2 1/2", 3"

DESCRIPTION

This is a double check detector assembly. Febco was purchased by the Watts Regulator Company in 2005. In 2006 Febco began selling the Watts model 007DCDA as the Febco model 858. Production was discontinued in 2013. For repair information see the Watts model 007.

BASIC REPAIR KIT

Mainline repair kit contains discs and O'rings.

SIZE

2 1/2"-3"

KIT NO

007-RT250

Bypass repair kit contains all discs holders and O'ring

SIZE

Watts 1/2" 007

KIT NO

007-RT050

IMPORTANT FEATURES

- ~Cast iron fused epoxy body
- ~Replaceable check seats
- ~Contained springs
- ~Factory repair information enclosed



Series 858 **FEBCO**[®]

Double Check Detector Assemblies

Sizes: 2½" – 3" (65 – 80mm)

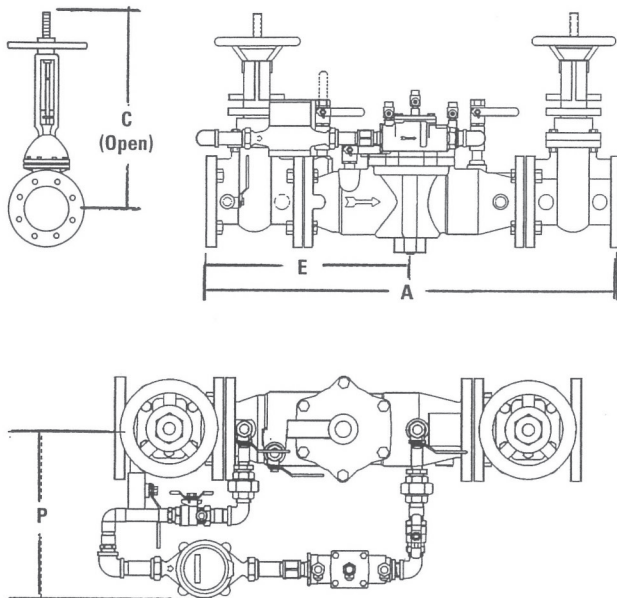
Materials

Body: Epoxy coated cast iron
 Seats: Bronze
 Discs: Silicone
 Springs: Stainless steel
 Meter: Bronze 5/8" x 3/4" (16 x 19mm)

Pressure – Temperature

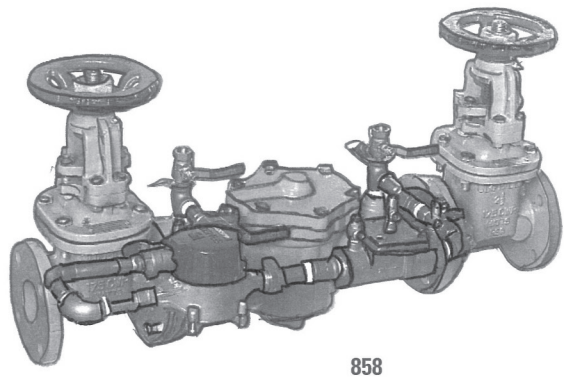
Temperature Range: 33°F – 110°F (0.5°C – 43°C) continuous,
 140°F (60°C) intermittent.
 Maximum Working Pressure: 175psi (12.1 bar)

Dimensions – Weights



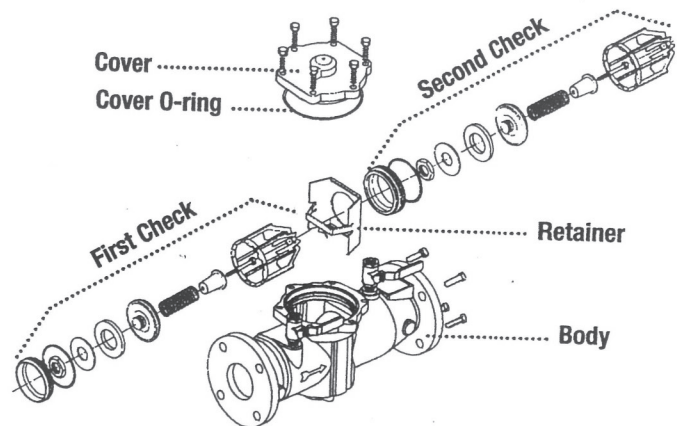
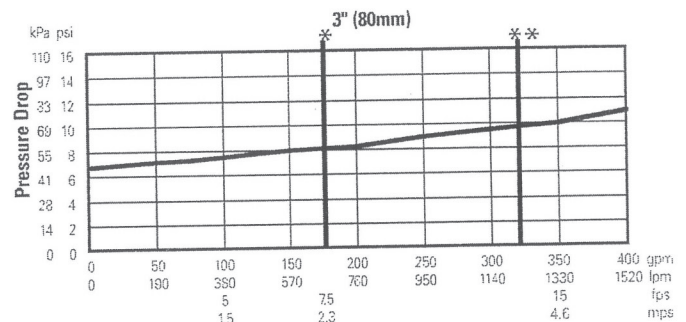
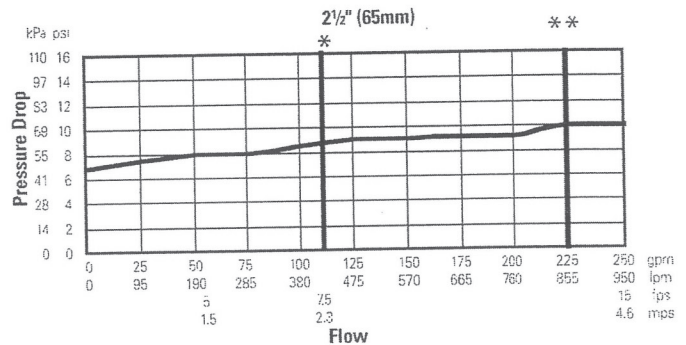
Size: 2½" - 3" (65 - 80mm)

SIZE (DN)		DIMENSIONS								WEIGHT	
		A		C		E		P			
in.	mm	in.	mm	in.	mm	in.	mm	in.	mm	lbs.	kgs
2½	65	33¼	845	16¾	416	16¾	416	12½/16	313	164	74
3	80	34¼	870	18¾	479	16¾	422	12½/16	313	196	89



858

*Typical maximum system flow rate (7.5 feet/sec.). **UL rated flow



Check Assemblies

