

# FLOMATIC DCV

# FLOMATIC DCVE

## SIZE

3/4", 1", 1 1/2", 2", 2 1/2", 3", 4", 6", 8", 10"

## DESCRIPTION

This is a double check assembly. Production began in 1993. The division that produced backflow preventers was purchased by Watts Regulator in 2011. Production of these assemblies was discontinued in 2013. The 3/4"-2" body is made of bronze and the 2 1/2"-10" size is a ductile iron body that is fused epoxy coated. There is a single cover on the top. The checks are modular in design. Check modules are held in the body with spring clips. Check seats are replaceable. In 2002 the model DCVE was introduced in sizes 3/4"-2" which is similar in construction as the DCV except the body is made of an unleaded bronze alloy. Most repair parts are the same.

## BASIC REPAIR KIT

Repair kit contains discs and O'rings

<u>SIZE</u>	<u>KIT NO</u>
3/4"-1" DCV & DCVE	B91RK00 ♦
1 1/2"-2" DCV & DCVE	B91RK03
2 1/2"-3"	B91RK05
4"	B91RK07
6"	B91RK09
8"	B91RK10
10"	B91RK11 ♦

## IMPORTANT FEATURES

*~Bronze body 1/2"-2"*

*~Fused epoxy ductile iron body 2 1/2"-8"*

*~Modular check design*

*~Single access cover*

*~Factory repair information enclosed*



### 3/4" THRU 2"

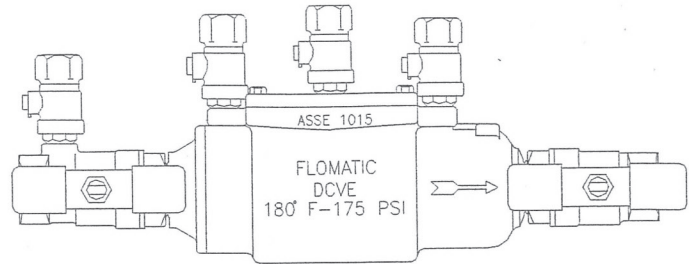
#### Model DCV

**Pressure Max: 175 PSI**  
**Temperature Max: 180°F**

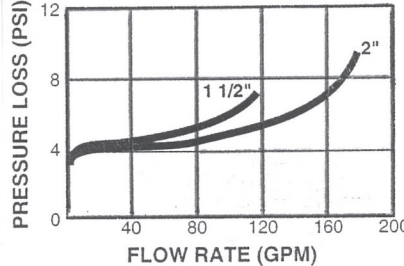
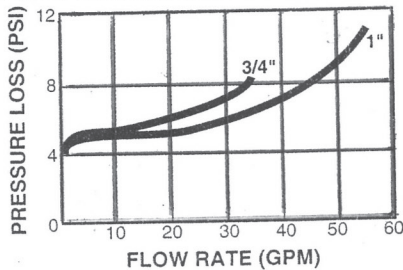
#### Description

#### Materials

Body	Bronze
Springs	Stainless Steel
Poppets	Bronze
Check Valve Seats	Noryl®
Spring Clips	Stainless Steel
Seat Discs	Silicone Rubber
Fasteners	Stainless Steel



#### FLOW CURVES with BALL VALVES



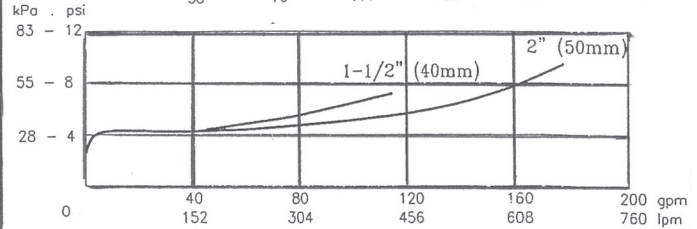
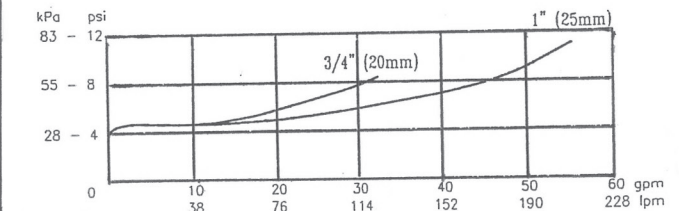
	3/4"	1"	1 1/2"	2"
<b>DIMENSIONS</b>				
A	12	13	19	20
B	7-5/8	7-5/8	12 1/2	12 1/2
C	5	5	6 1/2	6 1/2
D	3 1/2	3 1/2	4 3/8	4 3/8
WIDTH	3 1/4	3 1/4	4 3/4	4 3/4
NET WEIGHT	7 1/4	8 1/4	23 1/2	28
SHIPPING WEIGHT	9 1/4	10 1/4	28 1/2	33

#### Model DCVE

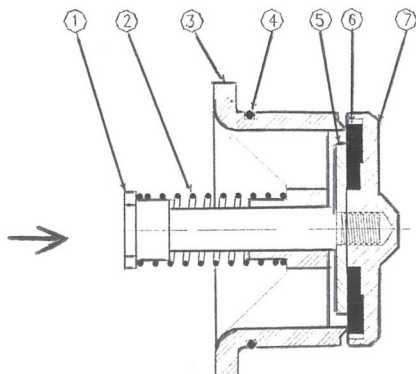
Maximum working water pressure—175 PSI (1200 kPa)  
Maximum working water temperature—180°F  
Hydrostatic Test Pressure—350 PSI (2400 kPa)

#### Materials

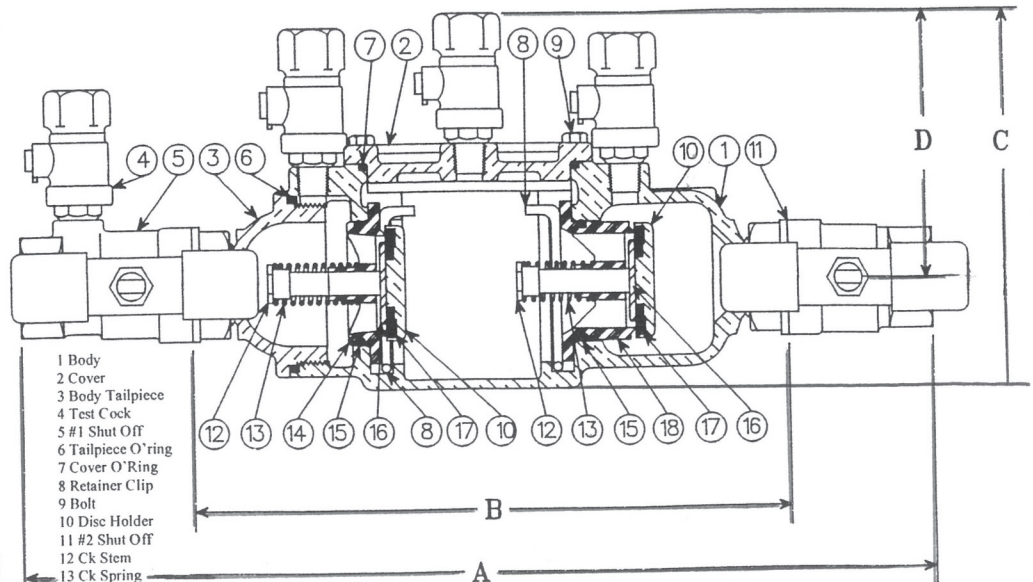
Valve Body — Unleaded Bronze (Federalloy I-836)  
Access cover — Unleaded Bronze (Federalloy I-836)  
Polymers — Noryl™, NSF Listed  
Elastomers — Silicone  
Springs — Stainless Steel



#### CK Assy



ITEM	DESCRIPTION
1	C.V. STEM
2	C.V. SPRING
3	2nd C.V. Seat Ring
4	C.V. O-Ring
5	C.V. Disc Retainer
6	C.V. DISC
7	C.V. DISCHOLDER



- 1 Body
- 2 Cover
- 3 Body Tailpiece
- 4 Test Cock
- 5 #1 Shut Off
- 6 Tailpiece O-ring
- 7 Cover O-ring
- 8 Retainer Clip
- 9 Bolt
- 10 Disc Holder
- 11 #2 Shut Off
- 12 Ck Stem
- 13 Ck Spring
- 14 #1 Ck Seat
- 15 Ck O-ring
- 16 Ck Disc Ret
- 17 Ck Disc
- 18 #2 Ck Seat

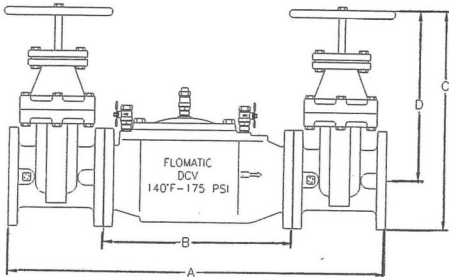
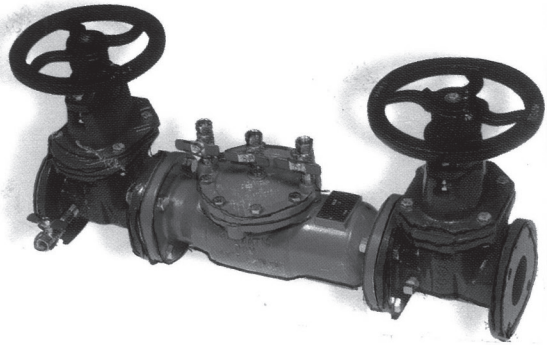
# FLOMATIC® VALVES

Max. working pressure: 175 PSI (1200 kPa)  
 Max. working temperature: 140°F (82°C)  
 Hydrostatic Test Pressure: 350 PSI (2400 kPa)

## MATERIALS:

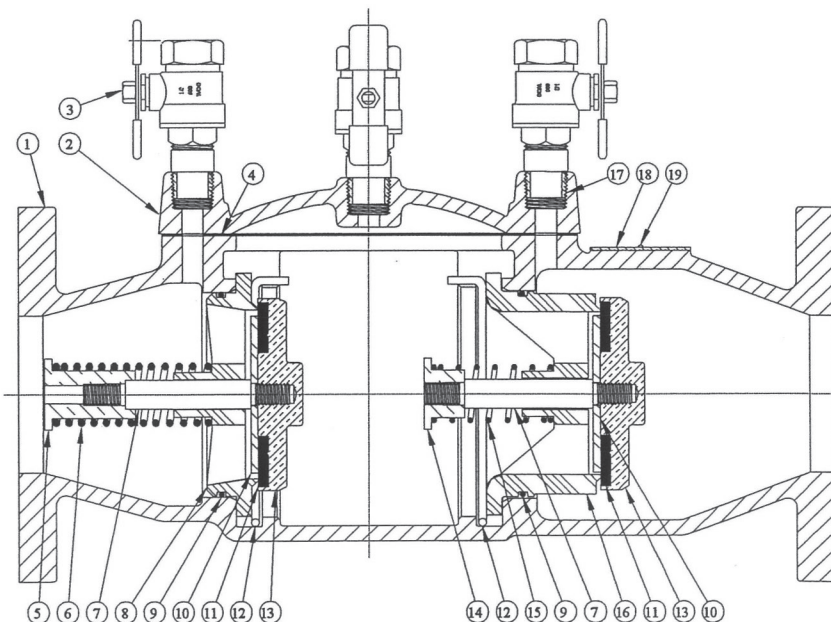
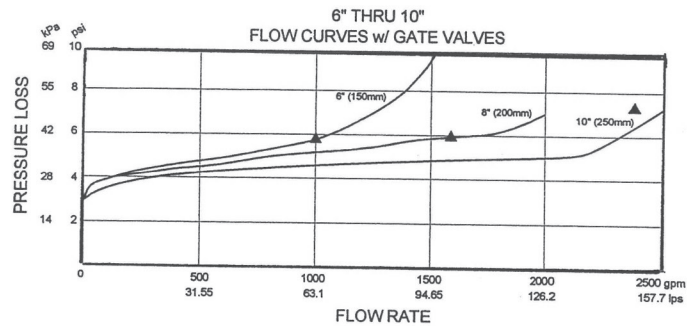
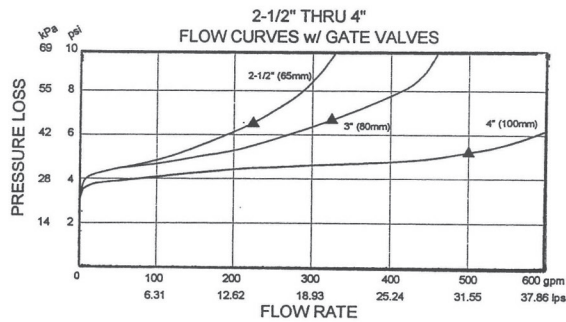
Valve Body: Ductile Iron  
 Access Cover: Ductile Iron  
 Polymers: Noryl™, NSF Listed  
 Elastomers: Silicone  
 Springs: Buna-n (FDA approved)  
 Coating: Stainless Steel  
 Coating: FDA approved fusion epoxy

## Double Check Assembly Model DCV 2 ½ - 10"



Size		Part #	A		B		C		D		Width		Wgt with GV		Wgt less GV	
Inch	mm		Inch	mm	Inch	mm	Inch	mm	Inch	mm	Inch	Mm	lbs	kg	lbs	kg
2-1/2	65	B9105	31-1/4	794	16-1/4	413	14-7/8	378	11-3/8	289	7-3/4	197	154	70	50	22.75
3	80	B9106	32-1/4	819	16-1/4	413	16-1/8	410	12-3/8	314	10	254	176	80	50	22.75
4	100	B9107	39	991	21	533	19-1/4	489	14-3/4	375	10	254	290	131.75	100	45.5
6	150	B9109	42	1067	21	533	24-1/2	622	19	483	12-1/8	308	447	202.75	147	66.75
8	200	B91010	50-1/2	1283	27-1/2	699	29-1/4	743	22-1/2	572	14-3/4	375	695	315.25	285	129.5
10	250	B91011	58-3/4	1492	32-1/2	826	34-1/2	876	26-1/2	673	18	457	1170	530	450	204

## FLOW CHARACTERISTICS



ITEM	QTY.	DESCRIPTION
1	1	VALVE BODY
2	1	VALVE COVER
3	4	1/2" BALL VALVE
4	1	DCV COVER GASKET
5	1	1st CHECK VALVE STEM RETAINER
6	1	1st CHECK VALVE SPRING
7	2	CHECK VALVE STEM
8	1	1st CHECK VALVE SEAT RING
9	2	CHECK VALVE ORING
10	2	CHECK VALVE DISC RETAINER
11	2	CHECK VALVE DISC
12	2	CHECK VALVE SPRING CLIP
13	2	CHECK VALVE DISC HOLDER
14	1	2nd CHECK VALVE STEM RETAINER
15	1	2nd CHECK VALVE SPRING
16	1	2nd CHECK VALVE SEAT RING
17	3	1/2" x 1 1/2" NIPPLE
18	1	IDENTIFICATION TAG
19	2	GRIP NAIL
20	2	NRS TYPE G.V.
21	8	5/8"-11 x 2 1/4" HXHD BOLT
22	8	5/8"-11 HXHD NUT
23	8	1/2"-13 x 1 1/4" HXHD BOLT
24	2	3" RING GASKET
25	1	1/2" x 2 1/2" NIPPLE
26	1	1/2" NPT PLUG

NOTE: Items 20 thru 26 not shown on drawing.