

# WILKINS 575

# WILKINS 575A

## SIZE

3/4", 1", 1 1/4", 1 1/2", 2", 2 1/2", 3", 4", 6"

## DESCRIPTION

The 575 is a reduced pressure assembly. Production began approximately 1975 under the Richwell model RP name. Around 1978 it was sold to the Neptune Meter Co. who produced it as a Model 575. In 1984 it was sold to the Wilkins Regulator Co. who produced it until 1995. The check design is similar to the Model 550. The 3/4"-2" sizes are of bronze construction. The check covers on the 3/4"-1" have had several modifications over the years and could be either bolted or screwed onto the check body. The check design utilizes a piston design. The check seats are cast in the body and are not replaceable. The check springs are not contained when the check covers are removed. The relief valve is attached by a flange to the check body and is pressurized by external relief valve sensing lines. The relief valve seat is replaceable. The relief valve stem design on the 3/4"-2" size has had several modifications over the years. Rubber repair parts for the earliest version of the 1 1/4"-2" may not be available. The relief valve spring is not contained when the relief cover is removed. The 2 1/2"-6" size check body is a fused epoxy coated cast iron. The checks are also a piston style design. The check seats are replaceable without any special tools. Check springs are contained when the check covers are removed except on the 2 1/2" and 3" second check. The relief valve is a bronze body unit attached by a flange to the check body and is pressurized by external relief valve sensing lines. The relief spring is contained when the cover is removed. Spring tension must be released for a proper repair. The relief valve seat is replaceable.

## BASIC REPAIR KIT

The 3/4"-1" repair kit contains all rubber discs, diaphragm, gasket, and O-rings.

The 2 1/2"-6" size repair kit contains all rubber discs, rolling diaphragm, washers, and O-rings.

<u>SIZE</u>	<u>KIT NO</u>	<u>AIR GAP DRAIN</u>
3/4"-1"	RK34-575R	AG1
1 1/4"-2"	RK114-575R	AG2
2 1/2"-3"	55575-300 *	AG3
4"	55575-400 *	AG3
6"	55575-600 *	AG3

## IMPORTANT FEATURES

### 3/4"-2" SIZE

- ~Bronze body
- ~Check sets are not replaceable
- ~Springs are not contained
- ~External relief valve sensing line
- ~Relief valve can be removed from the check body
- ~Factory repair information enclosed

### 2 1/2"-6" SIZE

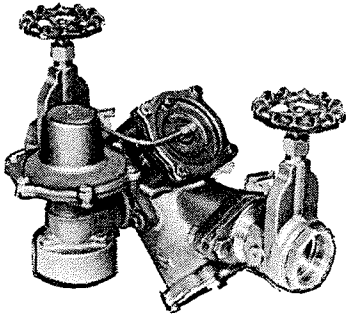
- ~Fused epoxy cast iron check body
- ~Replaceable seats
- ~External relief valve sensing line
- ~2 1/2"-3" second check spring is not contained
- ~Relief valve can be removed from the check body
- ~Factory repair information enclosed



# WILKINS

## MODEL 575

### BACKFLOW PREVENTERS REDUCED PRESSURE PRINCIPLE Sizes 3/4" - 2"



#### FEATURES

##### LOW HEAD LOSS

- Exceeds all standards
- Lowest in industry

##### LOW MAINTENANCE COSTS

- No special tools required to service units
- Few moving parts
- In-line serviceability

##### COMPACT SIZE

- Easy to install

##### CAST BRONZE MAINCASE

- Sturdy, durable, corrosion resistant

##### POPPET TYPE CHECK VALVES

- Independently operated
- Spring loaded, stainless steel springs
- Corrosion resistant

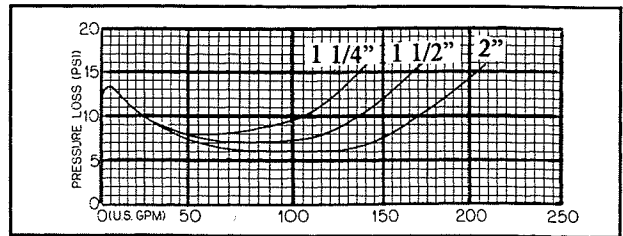
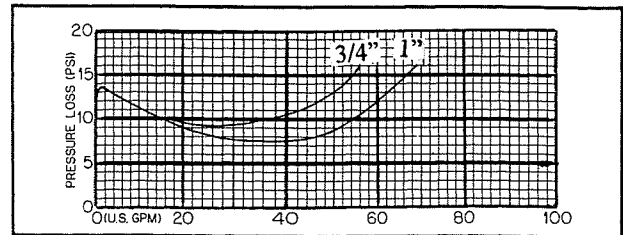
##### HYDRAULICALLY ACTUATED RELIEF VALVE

- Discharges backflow to atmosphere

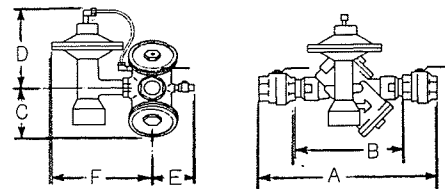
#### MATERIALS

All corrosion resistant  
Cast bronze maincase  
Stainless steel springs  
Rubber check valve discs  
Cast bronze relief valve body  
Stainless steel bolts

#### SPECIFICATIONS



#### DIMENSIONS & WEIGHTS



MODEL SIZE	DIMENSIONS (INCHES)							WEIGHT (LBS)				
	A Ball Valves	A Gate Valves	A Double Union Ball Valves	B Less Stop Valves	C	D	E	F	Less Stop Valves	With Gates	With Ball Valves	Double Union w/ Ball Valves
3/4	13.75	12.25	15.12	8.5	3.5	5.75	3	7	15	16.5	16.5	19.44
1	14.75	12.75	16.12	8.5	3.5	5.75	3	7	15	17.5	18	20.63
1 1/4	18.25	16.75	N/A	12	4.5	5	3.5	7.25	22	26	26.5	N/A
1 1/2	18.75	16.75	21.25	12	4.5	5	3.5	7.25	22	26.5	28.5	28.6
2	21	16.75	22.25	12	4.5	5	3.5	7.25	22	28.5	33	33.2

#### OPTIONS

Suffix (options can be combined)  
B - with full port resilient seated ball valves  
S - with bronze "Y" strainer  
U - with union connections  
L - without shut-off valves

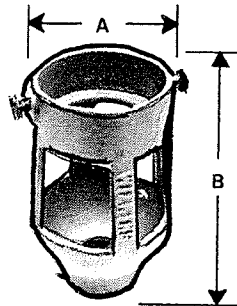
#### PRESSURE-TEMPERATURE

Suitable for supply pressure up to 150 PSI and water temperatures from 33°F to 140°F.

No.	For #575 Sizes	Body	Dimensions		Wt.
			A	B	
AG-1	3/4" - 1	Iron	7.78"	5.00"	1.5 lbs.
AG-2	1 1/4" - 2	Iron	4.00"	8.00"	2.5 lbs.
AG-3	2 1/2" - 6	Iron	4.25"	14.24"	5.0 lbs.

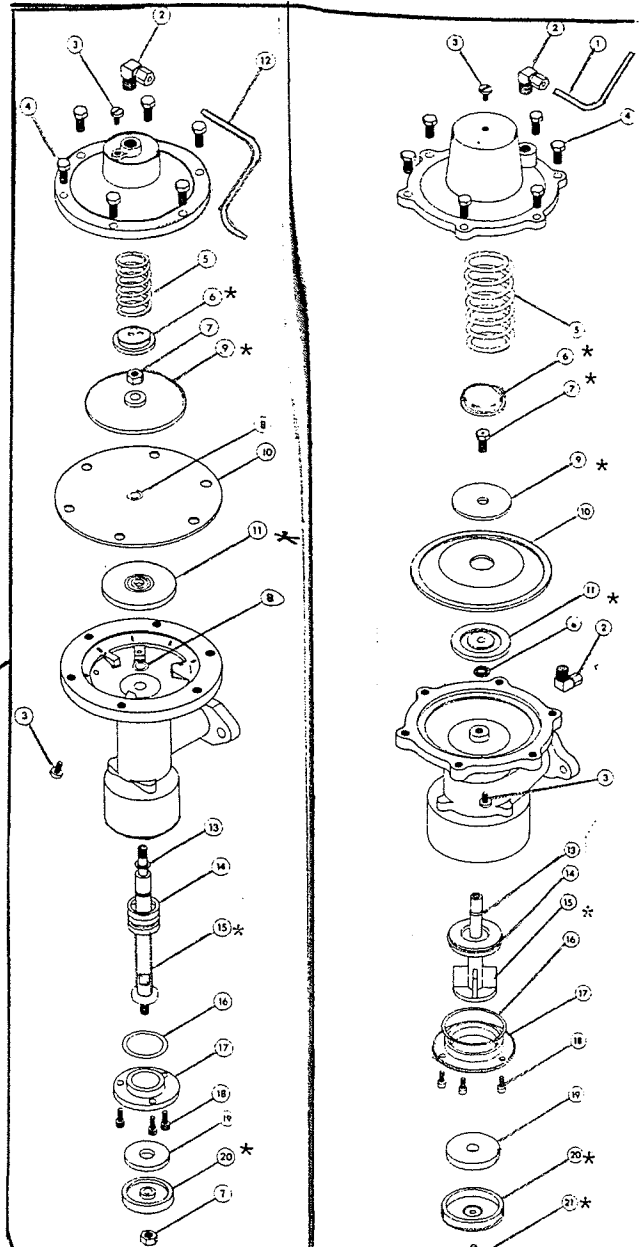
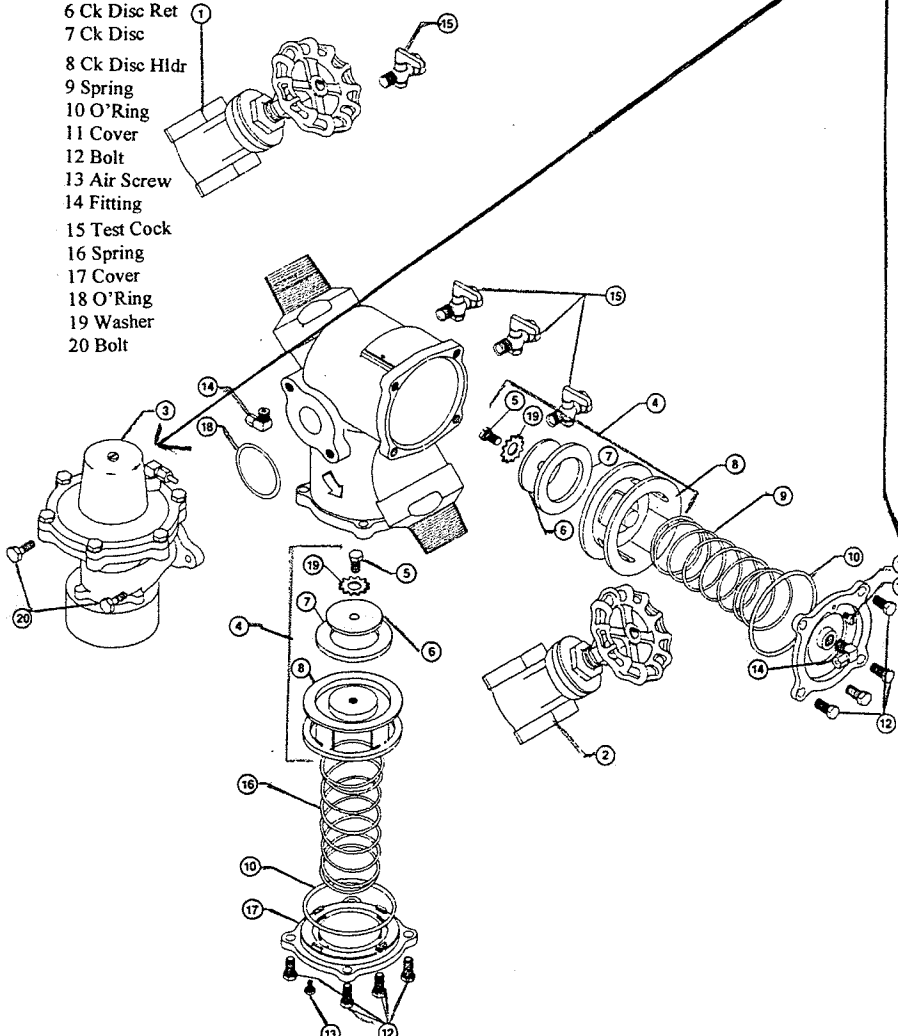
## BACKFLOW PREVENTER AIR GAPS

For use with 3/4" through 10" No. 575 Backflow Preventers on horizontal installations. Can be easily mounted to body.



**AIR GAPS**

- 1 #1 Shut Off
- 2 #2 Shut Off
- 3 Rv Assembly
- 4 Ck Assembly
- 5 Bolt
- 6 Ck Disc Ret
- 7 Ck Disc
- 8 Ck Disc Hldr
- 9 Spring
- 10 O'Ring
- 11 Cover
- 12 Bolt
- 13 Air Screw
- 14 Fitting
- 15 Test Cock
- 16 Spring
- 17 Cover
- 18 O'Ring
- 19 Washer
- 20 Bolt



**3/4 - 1" RV**

**1 1/4 - 2" RV**

- 2 Fitting
- 3 Air Bleed
- 4 Bolt
- 5 RV Spring
- 6 Spring Ret
- 7 Nut
- 8 O'Ring
- 9 Diaph Support
- 10 Diaphragm
- 11 Diaph Support
- 12 RV Tubing
- 13 O'Ring
- 14 O'Ring
- 15 RV Stem
- 16 O'Ring
- 17 Rv Seat
- 18 Screw
- 19 RV Disc
- 20 Rv Disc Holder

- 1 RV Tubing
- 2 Fitting
- 3 Air Bleed
- 4 Bolt
- 5 RV Spring
- 6 Spring Retainer
- 7 Diaph Bolt
- 8 O'Ring
- 9 Diaph Support
- 10 Diaphragm
- 11 Diaph Support
- 13 O'Ring
- 14 Quad Ring
- 15 RV Stem
- 16 O'Ring
- 17 RV Seat
- 18 Screw
- 19 RV Disc
- 20 RV Disc Holder
- 21 Bolt

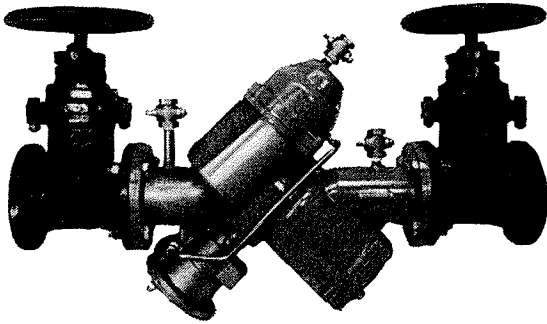
# WILKINS



a step ahead of tomorrow  
ZURN INDUSTRIES, INC.

## MODEL 575

Reduced Pressure Principle  
Backflow Preventers  
Sizes 2 1/2", 3", 4", & 6"



### FEATURES

#### LOW HEAD LOSS

Lowest in industry

#### LOW MAINTENANCE COSTS

No special tools required to service units

#### COMPACT SIZE

Easy to install

#### MODULAR DESIGN

Unitized spring assembly for safety

One piece sleeve and seat

#### EPOXY COATED MAINCASE

Fusion coated inside and outside

Corrosion Resistant (FDA) Approved

### MATERIALS

All corrosion resistant

Epoxy coated (FDA Approved) maincase  
inside and outside

Brass poppet type check valves-  
unitized spring assembly, independently  
operated, stainless steel springs.

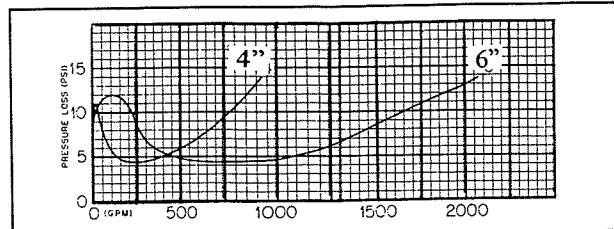
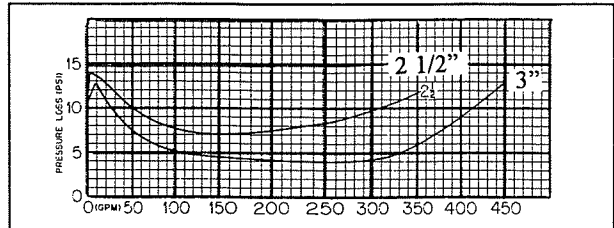
One piece brass sleeve and seat-  
easy to remove.



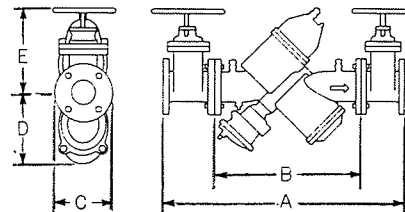
\* U.L. listed backflow preventers must include  
OS & Y Gate Valves.

### SPECIFICATIONS

#### FLOW CHARACTERISTICS



### DIMENSIONS & WEIGHTS



SIZE inches	DIMENSIONS				NRS	OS & Y		WEIGHT LBS		
	A	B	C	D		OPEK	CLOSED	NRS	OS & Y	LESS GATES
2 1/2	35	20	7	8.75	9.25	14	11.75	180	256	118
3	36	20	7.5	8.75	10.25	23.5	18	204	271	118
4	46	28	9	11	12.5	23.5	19	380	482	249
6	57	36	11	16	16.75	30	24	865	1023	640

### OPTIONS

Suffix

R - with resilient wedge shut-off valves

FS - with flanged strainer

FSC - with epoxy coated flanged strainer

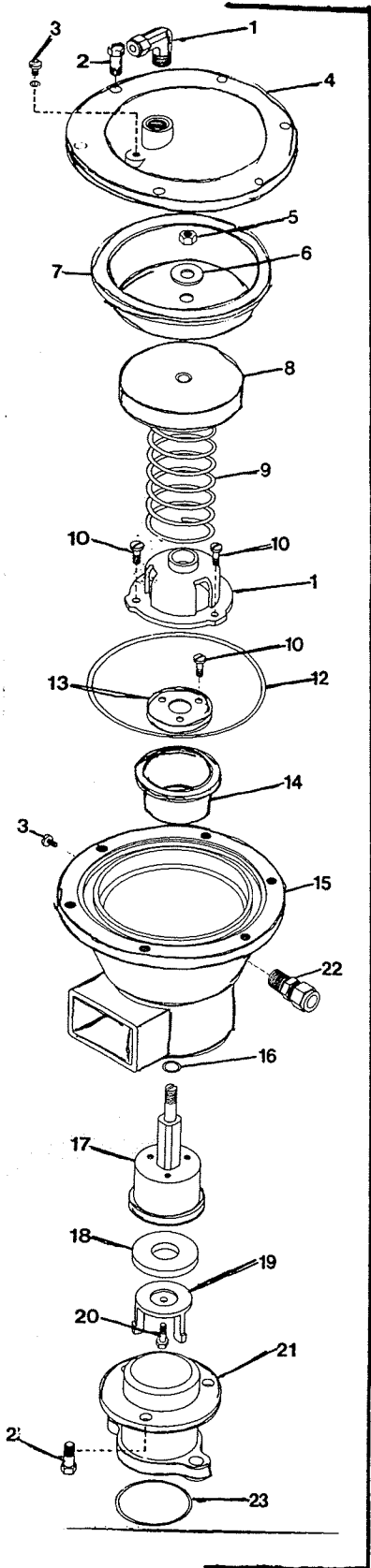
ROS&Y - with resilient wedge OS & Y shut-off valves

L - without shut-off valves

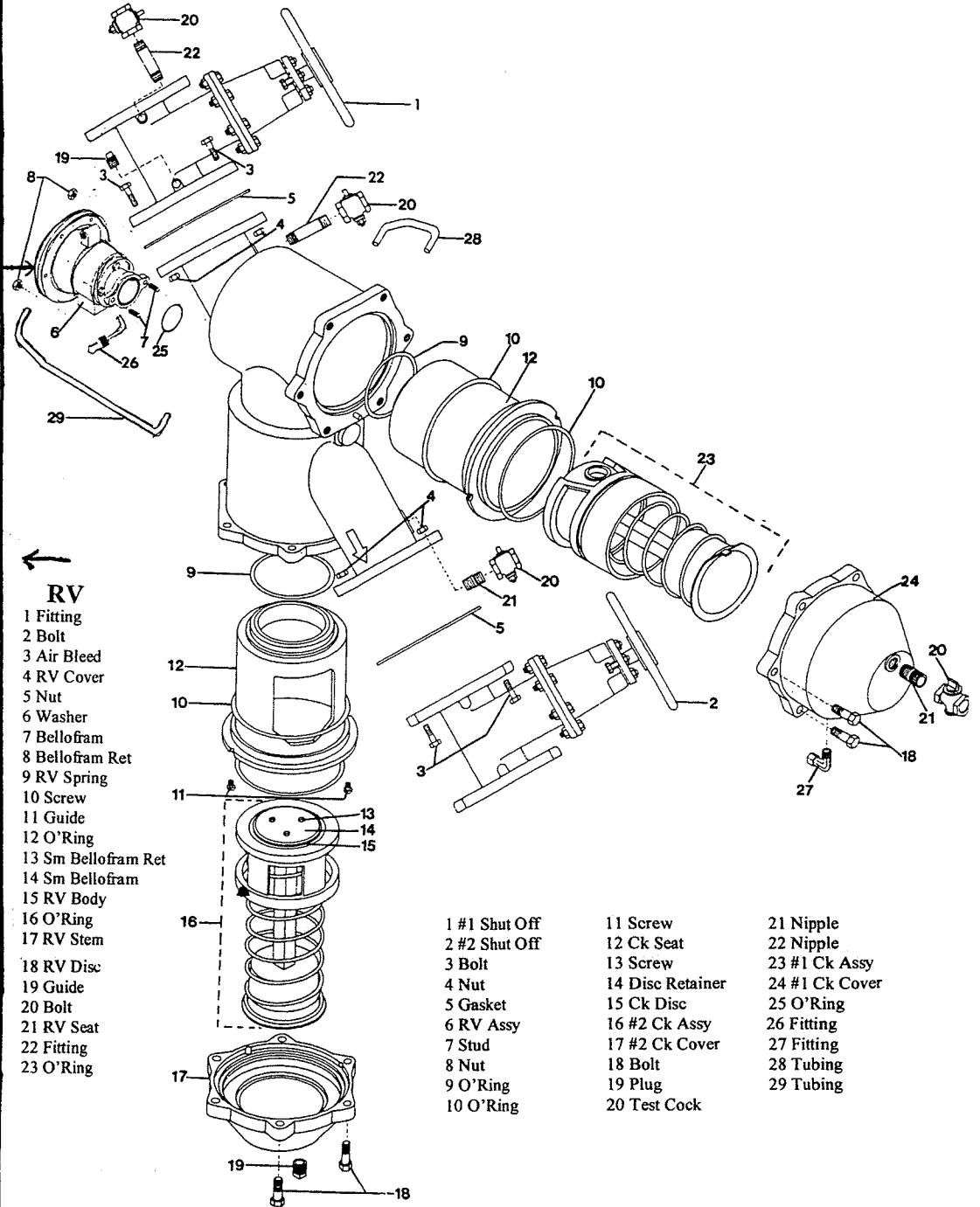
### PRESSURE-TEMPERATURE

Suitable for supply pressure up to 150 PSI and  
water temperatures from 33°F to 110°F.

# 575 2 1/2-6"



relief valve assy



**RV**

- 1 Fitting
- 2 Bolt
- 3 Air Bleed
- 4 RV Cover
- 5 Nut
- 6 Washer
- 7 Bellofram
- 8 Bellofram Ret
- 9 RV Spring
- 10 Screw
- 11 Guide
- 12 O'Ring
- 13 Sm Bellofram Ret
- 14 Sm Bellofram
- 15 RV Body
- 16 O'Ring
- 17 RV Stem
- 18 RV Disc
- 19 Guide
- 20 Bolt
- 21 RV Seat
- 22 Fitting
- 23 O'Ring

- 1 #1 Shut Off
- 2 #2 Shut Off
- 3 Bolt
- 4 Nut
- 5 Gasket
- 6 RV Assy
- 7 Stud
- 8 Nut
- 9 O'Ring
- 10 O'Ring

- 11 Screw
- 12 Ck Seat
- 13 Screw
- 14 Disc Retainer
- 15 Ck Disc
- 16 #2 Ck Assy
- 17 #2 Ck Cover

- 21 Nipple
- 22 Nipple
- 23 #1 Ck Assy
- 24 #1 Ck Cover
- 25 O'Ring
- 26 Fitting
- 27 Fitting
- 28 Tubing
- 29 Tubing