

WATTS

007/ 007M1/ 007M2/ 007M3/ LF007

SIZE

1/2", 3/4", 1", 1 1/4", 1 1/2", 2", 2 1/2", 3", 4", 6"

DESCRIPTION

This is a double check assembly. Production began in 1989. All versions in the 1/2"-2" size have bronze bodies with in-line modular check assemblies that are removed from a single cover on the top. In 2010 the LF model was introduced which utilizes a lead free bronze. Check modules are held in the body by a retainer. Check seats are replaceable. All springs are contained when the cover is removed. Spring tension had to be released for a proper repair. There have been several modifications over the years but all versions utilize a similar construction. Be sure which version you have because repair kits are different. The original design was the 007 model produced from 1989-1991. From 1991-1993 the 007M1 model was produced. The difference being in 3/4"-1" the disc holders on the newer M1 style are now plastic instead of bronze and in all sizes a change in the check seat dimensions. The check cover is bolted on in the 007 and the 007M1 except the 3/4"-1" 007 which had a screw on cover. The 007M2 design began in 1993. The major change in the 007M2 was the downsizing of the body which produced a corresponding down sizing change in the internal parts. In 1993 the 1/2" 007 began production. In 1998 the 3/4" 007M3 was introduced. The U007 series was developed in sizes 3/4"-2" which incorporates a union end into the body. The U007A series utilizes a 90 degree elbow for an up and down piping orientation. The 007PC series is a polymer coated bronze assembly. The SS007 series is available in sizes 1/2"-1". The SS007 is a stainless steel body assembly. In the 2 1/2"-6" the body is an epoxy coated cast iron design. The checks are an in-line design with a single bolted cover on the top. All springs are contained when the cover is removed. Spring tension has to be released for a proper repair. Check seats are replaceable. The 2 1/2"-3" check modules are held in the body with a retainer while the 4"-6" check modules are held in by a wire clip. The 4"-6" were discontinued in 1992. In 2010 a LF model was introduced in sizes 2 1/2"-3" which replaced the leaded bronze parts with plastic and stainless steel to make it a lead free assembly.

BASIC REPAIR KIT

The repair kit contains all disc holders or discs and O-rings.

<u>KIT NO</u>				
	<u>LF007</u>	<u>LF007M1</u>	<u>LF007M2</u>	<u>LF007M3</u>
<u>SIZE</u>	<u>007</u>	<u>007M1</u>	<u>007M2</u>	<u>007M3</u>
1/2"	007-RT050			
3/4"	007-RT075	007M1-RT075	007M2-RT075	007M3-RT075
1"	007-RT075	007M1-RT075	—	—
1 1/4"	—	—	007M2-RT150	—
1 1/2"	007-RT150	007M1-RT150	007M2-RT150	—
2"	007-RT150	007M1-RT150	—	—
2 1/2"	007-RT250			
3"	007-RT250			
4"	007-RT400◆			
6"	007-RT600◆			

IMPORTANT FEATURES

- ~Bronze body on the 1/2"-2"
- ~Cast iron fused epoxy body on the 2 1/2"-6"
- ~Replaceable check seats
- ~Contained springs
- ~Factory repair information enclosed



Series 007

Sizes 1/2" - 3"

Series 007 Double Check Valve Assembly is designed to provide protection of the safe drinking water supply in accordance with national plumbing codes and water utility authority requirements for containment at the service line entrance. They can be applied to a variety of installations where the degree of hazard is considered to be low. Standardly furnished with ball type test cocks and quarter-turn, full port, resilient seated bronze ball valve shut-offs (3/4" - 2") No. 007QT. 3/4" - 1" have Tee handle shut-offs. Sizes 2 1/2" and 3" have resilient seated flanged gate valve shut-offs.

- Replaceable seats
- No special tools required for servicing
- Modular construction

Available Models

Sizes: 1/2" - 2"

Prefix U - union connections

Suffix QT - with quarter-turn, full port, resilient seated ball valves

S - with bronze strainer

LF - without shut-offs

Sizes: 2 1/2" and 3"

NRS RW - non-rising stem resilient seated gate valves

OS&Y RW - with resilient seated outside stem & yoke shut-offs

QT - with quarter-turn, full port, resilient seated ball valve shut-offs

LF - without shut-offs valves

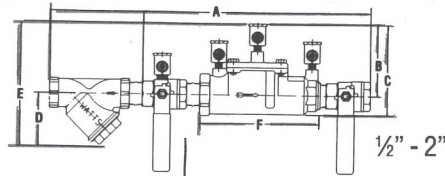
QT-FDA - with epoxy coated ball valve shut-offs

Standards (see page 3)

Pressure-Temperature

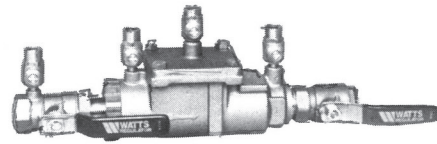
Supply pressure up to 175 PSI. Water temperature sizes 1/2" - 2" 140°F continuous, 180°F intermittent. Sizes 2 1/2" and 3" 110°F continuous, 140°F intermittent.

Dimensions-Weights (approximate)

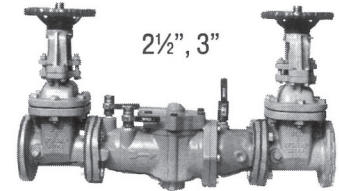


Size	Model	Dimensions inches						Weight lbs
		A	B	C	D	E	F	
1/2"	007	10	2 7/16	4 5/8	-	-	5	4 1/2
1/2"	007S	13	2 7/16	4 5/8	3	6	5	5 1/2
3/4"	007	14	4 1/8	5 1/2	-	-	8 1/4	9 1/4
3/4"	007S	18 3/4	4 1/8	5 1/2	2 3/4	6 7/8	8 1/4	11 1/2
3/4"	007M1	12 1/4	4 1/32	5 1/8	-	-	-	7
3/4"	007M1S	15 5/8	4 1/32	5 1/8	3	6 3/4	-	9
3/4"	007M2	11 1/8	3 1/8	4	-	-	-	5
3/4"	007M2S	14 1/2	3 1/8	4	3	6 1/8	-	6 3/4
3/4"	007M3	11 1/8	3 1/8	4	-	-	6 3/16	5
3/4"	007M3S	14 1/2	3 1/8	6 1/8	3	-	6 3/16	6 3/4
1"	007	15 1/4	4 1/2	5 7/8	-	-	8 1/4	10
1"	007S	21 1/8	4 1/2	5 7/8	3 1/8	7 5/8	8 1/4	13
1"	007M1	13 1/4	4 1/32	5 1/8	-	-	-	12
1"	007M1S	18	4 1/32	5 1/8	3 1/4	7 3/4	-	14
1 1/4"	007M2	16 3/8	3 5/16	5	-	-	9 1/2	15
1 1/4"	007M2S	21 1/2	3 5/16	7 1/16	3 1/2	-	9 1/2	19
1 1/2"	007	19 3/4	5 3/8	7 5/8	-	-	12 1/2	24 1/2
1 1/2"	007S	26 3/8	5 3/8	7 5/8	3 1/2	8 7/8	12 1/2	29
1 1/2"	007M1	18 3/8	4	6 1/4	-	-	13 3/8	21
1 1/2"	007M1S	25	4	6 1/4	3 1/2	8 1/4	13 3/8	27 3/4
1 1/2"	007M2	16 3/4	3 1/2	4 7/8	-	-	9 3/4	15 7/8
1 1/2"	007M2S	23 5/8	3 1/2	4 7/8	3 3/4	7 1/16	9 3/4	19 5/8
2"	007	23 3/4	4 3/4	7	-	-	12 1/2	30 5/8
2"	007S	31 1/2	4 3/4	7	-	-	12 1/2	38 5/8
2"	007M1	19 1/2	4	6 1/4	-	-	13 3/8	25 3/4
2"	007M1S	25 5/8	4	6 1/4	-	-	8 3/4	33 1/2

S models - with Strainer



1/2" - 2"



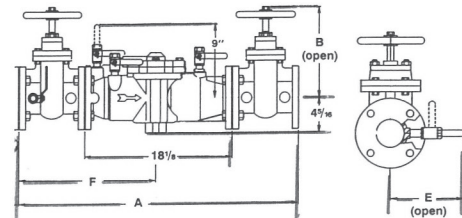
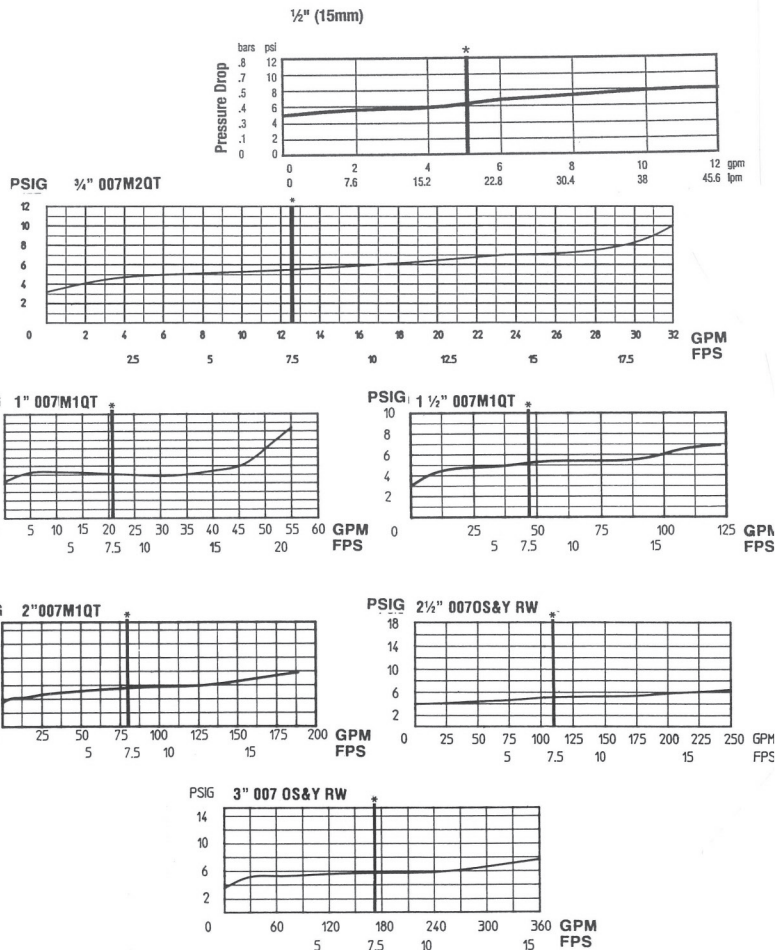
2 1/2", 3"

Capacity

As compiled from documented Foundation for Cross-Connection Control and Hydraulic Research at the University of Southern California lab tests.

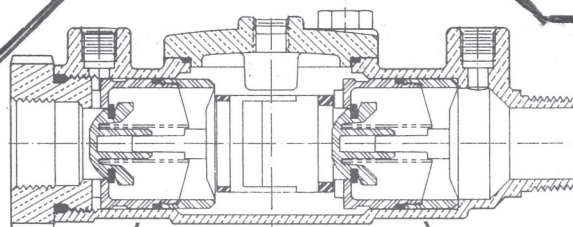
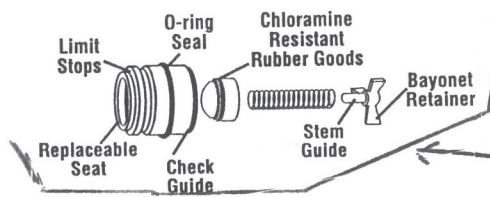
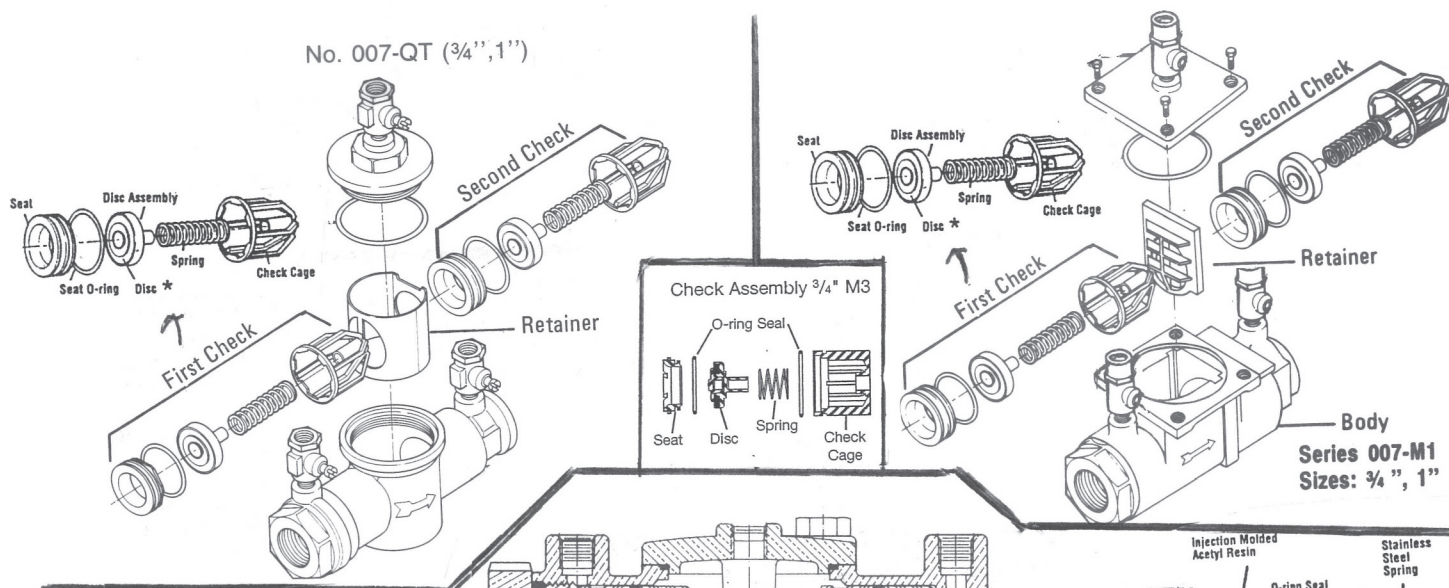
*Typical maximum mechanical/irrigation system flow rate (7.5 feet per second)

**Typical maximum fireline system flow rate (15.0 feet per second)



Size	Type	Dimensions (in.)				Weight (lbs.)
		A	B	E	F	
2 1/2"	007QT	33 3/4	6 1/4	8 1/4	16 1/4	155
	007-NRS-RW	33 3/4	11 1/4	8 1/4	16 1/4	155
	007-OS&Y-RW	33 3/4	15 1/4	8 1/4	16 1/4	158
3"	007-QT	34 1/4	8 1/4	8 1/4	16 1/4	185
	007-NRS-RW	34 1/4	12 1/4	8 1/4	16 1/4	185
	007-OS&Y-RW	34 1/4	18 1/4	8 1/4	16 1/4	190

No. 007-QT (3/4", 1")



Series 007-M2

Size: 3/4"

either style of check may be used

First Check

Second Check

