

# WATTS 990

# WATTS 992

## SIZE

4", 6", 8", 10"

## DESCRIPTION

The 990/992 is a reduced pressure assembly. It was produced from 1993-1997. The check bodies are made of ductile iron which is fused epoxy coated. The check is a toggle linkage mechanism. The check springs are contained when the cover is removed. The spring tension must be released to repair the assembly. The bronze check seats are replaceable but a seat removal tool is needed for that purpose. Instead of a rubber disc a vulcanized clapper plate is used to seal the check. The relief valve body is of bronze construction and is attached to the check body by a threaded connection. The relief seat is replaceable and the relief spring is contained. An external relief valve sensing line is utilized. A special shut-off valve was utilized on the 992 series. The shut-offs on the 992 had flange dimensions different than a standard sized shut-off.

## BASIC REPAIR KIT

Repair kit contains check clapper plates, gaskets, O-rings, diaphragm, and relief discs

<u>SIZE</u>	<u>KIT NO</u>	<u>AIR GAP DRAIN</u>
4" 990	990-RT400 ♦	AGF
4" 992	990-RT400 ♦	AGF
6" 990	990-RT600 ♦	AGF
6" 992	990-RT600 ♦	AGF
8" 990	990-RT800	AGK
8" 992	990-RT600 ♦	AGK
10" 992	990-RT800	AGK

## IMPORTANT FEATURES

~Ductile iron fused epoxy coated body

~Clapper plate check elastomer seals

~Contained spring

~Replaceable seats

~992 shut-offs are not standard dimensions

~Factory repair information enclosed



# Series 990

## REDUCED PRESSURE ZONE BACKFLOW PREVENTER

Sizes: 4", 6", 8"

The Watts Series 990 Reduced Pressure Zone Backflow Preventers are designed to provide cross-connection control protection of the potable water supply in accordance with national plumbing codes. This series can be utilized in a variety of installations, including health hazard cross-connections in piping systems or for containment at the water meter service line entrance.

Furnished with non-rising stem (NRS) resilient wedge gate valve shut-offs.

### FEATURES

- Replaceable bronze seats
- Fused epoxy coated & lined
- Stainless steel reinforced sensing hose
- Stainless steel internal parts
- No special tools required for normal maintenance
- Captured spring assemblies

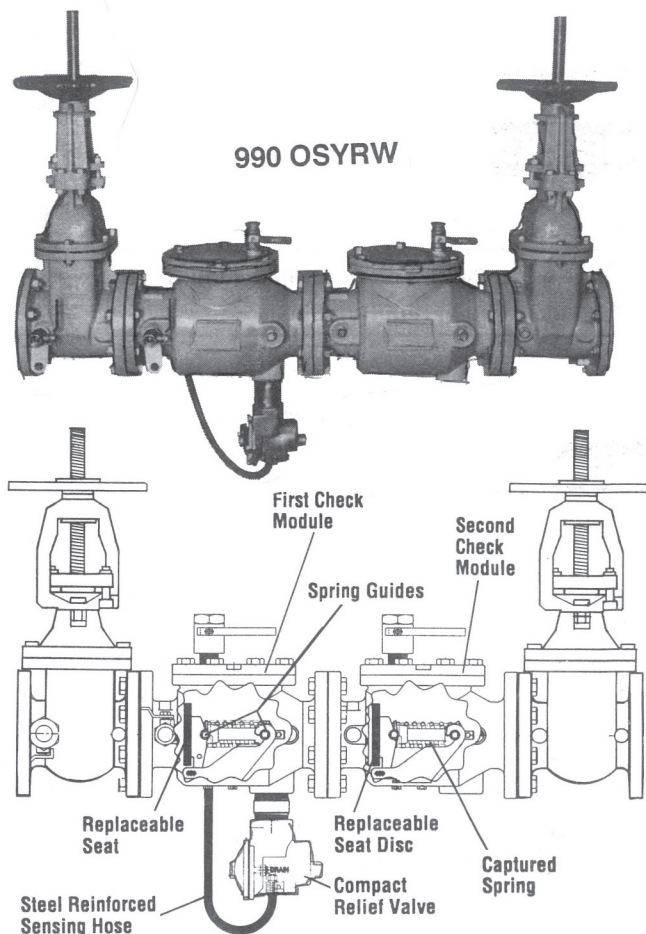
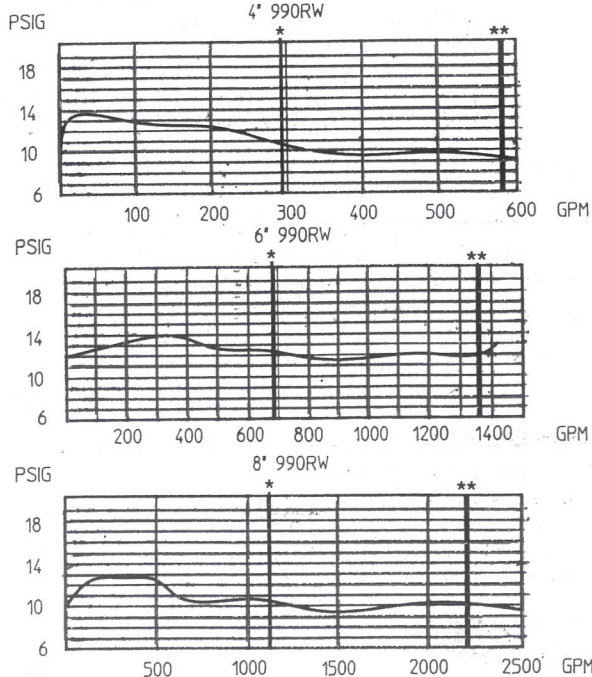
### MATERIALS

No. 990 sizes 4" - 8" have FDA approved epoxy coated ductile iron check valve bodies with bronze seats and bronze relief valve with stainless steel trim (4", 6") and FDA approved epoxy coated iron relief valve with stainless steel trim (8").

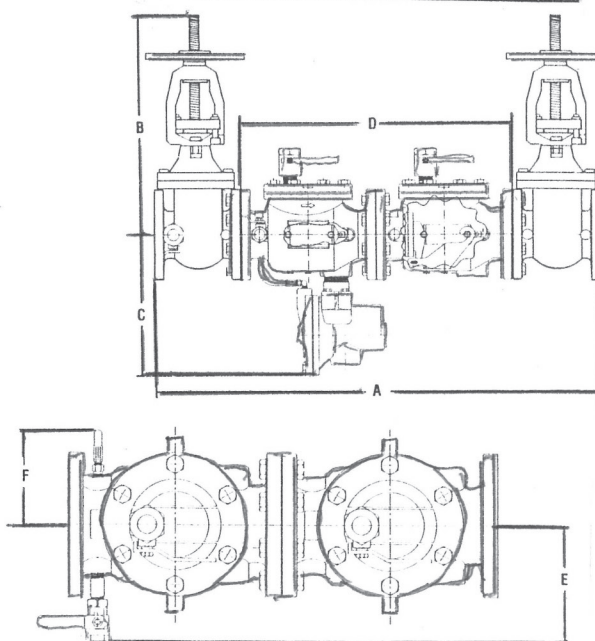
All sizes furnished with bronze body ball valve test cocks.

### PRESSURE - TEMPERATURE

Suitable for supply pressure up to 175 psi and water temperatures to 110°F.



### DIMENSIONS - WEIGHTS



Size	Dimensions (inches)						Weight (lbs.)
	A	B	C	D	E	F	
4" OS&YRW	46 $\frac{7}{8}$	23 $\frac{3}{8}$	16 $\frac{1}{2}$	28 $\frac{7}{8}$	15	9 $\frac{9}{16}$	364
6" OS&YRW	58 $\frac{3}{8}$	30	18	37 $\frac{3}{8}$	17	10'	631
8" OS&YRW	69 $\frac{1}{8}$	40	19 $\frac{1}{8}$	46 $\frac{7}{8}$	18 $\frac{1}{2}$	8 $\frac{1}{8}$	1138



# Series 992

## REDUCED PRESSURE ZONE BACKFLOW PREVENTER

Sizes: 4", 6", 8", 10"

### MATERIALS

No. 992 sizes 4" - 10" have FDA approved epoxy coated ductile iron check valve bodies with replaceable bronze seats and bronze relief valve with stainless steel trim (4", 6") and FDA approved epoxy coated iron relief valve with stainless steel trim (8" & 10").

All sizes furnished with bronze body ball valve test cocks.

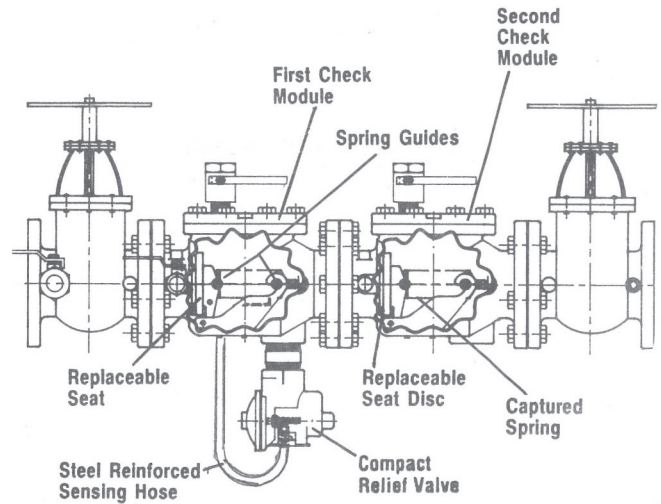
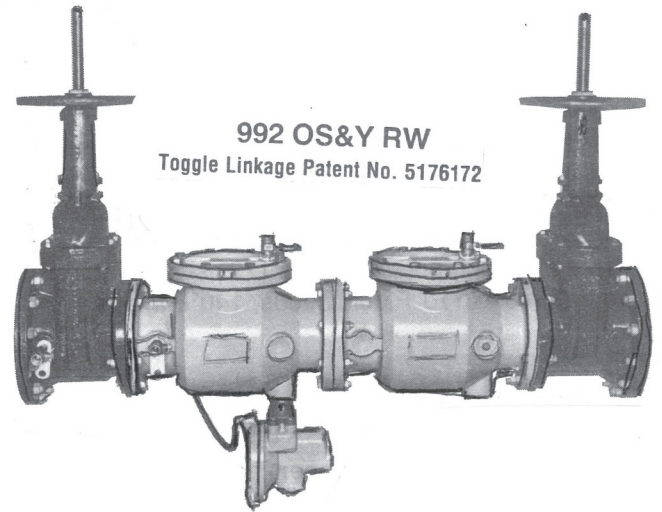
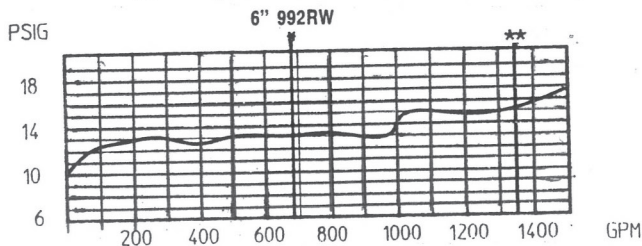
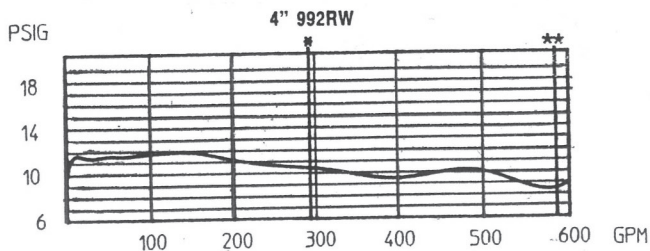
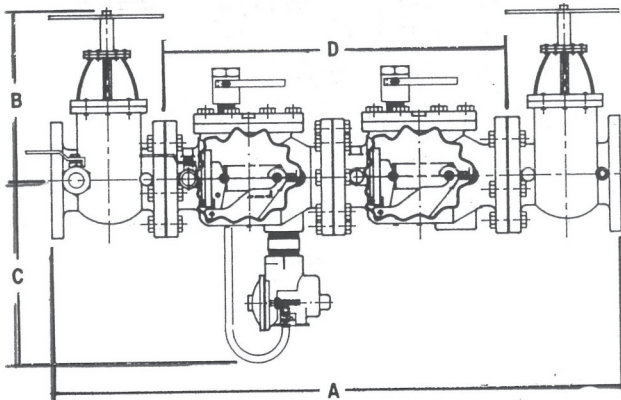
### PRESSURE - TEMPERATURE

Suitable for supply pressure up to 175 psi and water temperatures to 110°F continuous, 140°F intermittent.

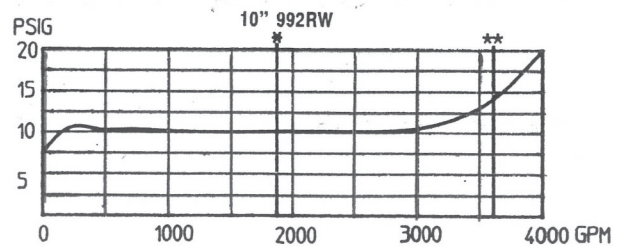
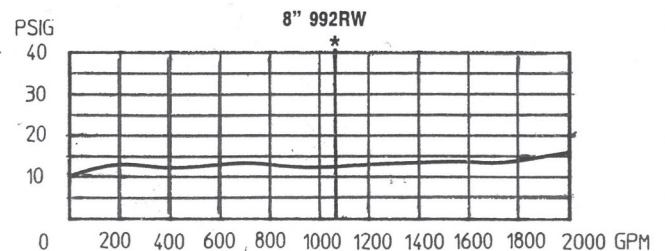
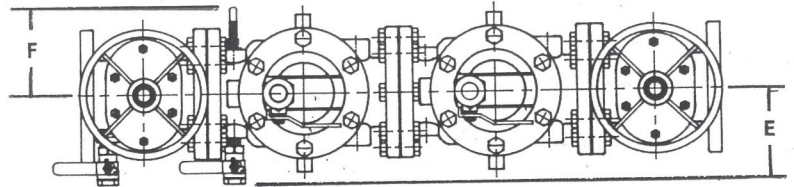
### STANDARDS

ASSE 1013, AWWA C511, CSA B64  
USC Manual For Cross Connection control 8th Edition  
IAPMO PS31

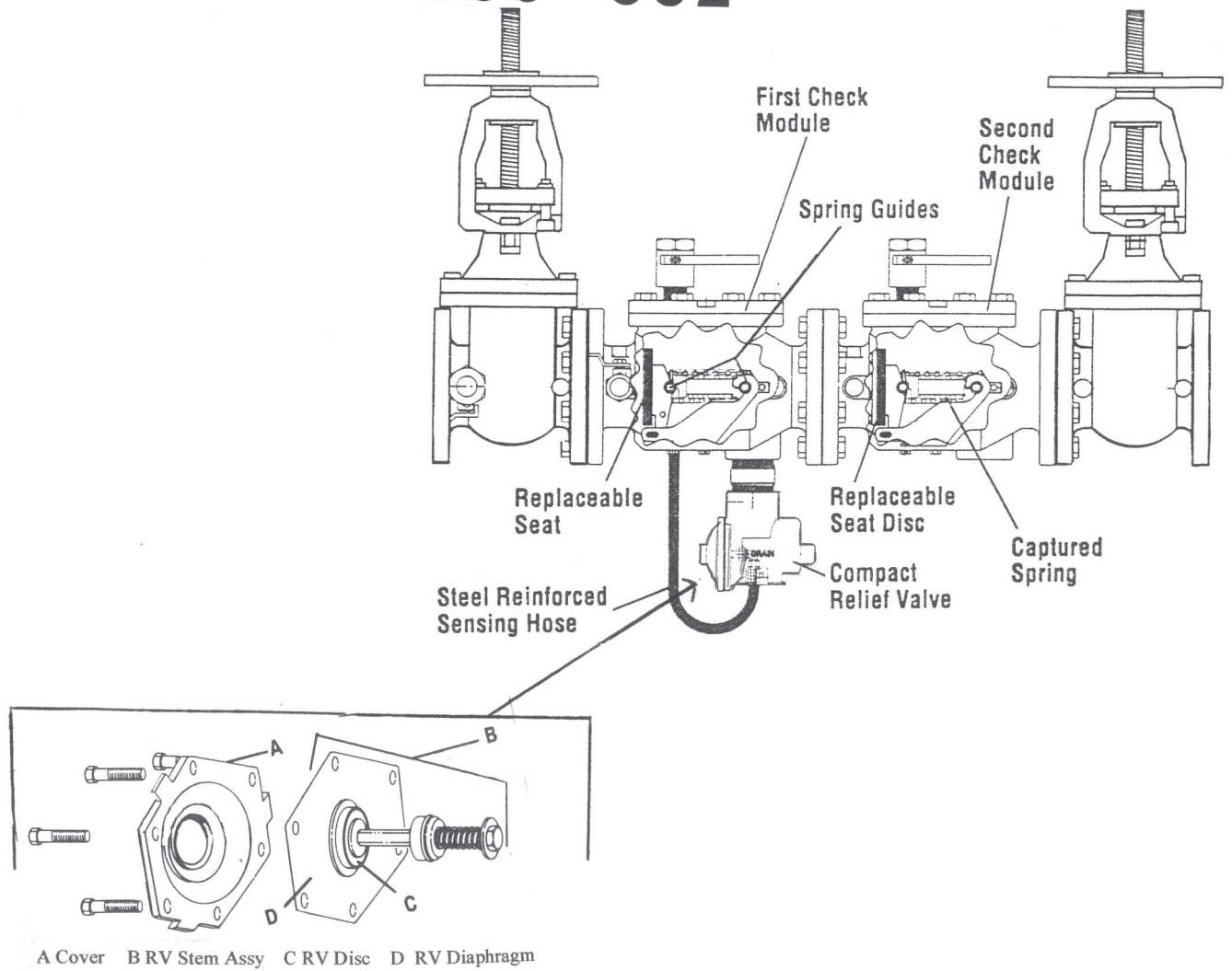
### DIMENSIONS - WEIGHTS



Size (Inches)	Dimensions (Inches)								Weight (lbs.)	
	A		B		C	D	E	F	OS&Y RW	NRS RW
4	44.87	44.87	23.31	6.00	16.50	28.87	7.87	9.18	351	307
6	57.25	55.25	23.31	12.00	18.00	37.37	8.69	10.00	611	537
8	59.25	58.25	29.87	19.62	19.79	37.37	8.75	8.81	811	685
10	73.54	72.04	39.87	23.93	19.79	49.04	8.75	8.81	1387	1147



# 990-992



## CHECK VALVES

