

# WILKINS

## 375/ 375A/ 375XL/ 475

### SIZE

1/2", 3/4", 1", 1 1/4", 1 1/2", 2", 2 1/2", 3", 4", 6", 8", 10"

### DESCRIPTION

This is a reduced pressure assembly. Production of the 3/4"-2" began in 2004. The 3/4"-2" use a bronze carriage which holds the glass filled noryl check/relief body which nestles into the carriage. In 2010 the 375XL was introduced using lead free bronze in the wetted areas. The checks are an in-line modular design. Spring tension must be released to perform a repair of the checks. The relief valve uses an internal sensing line. Production of the 2 1/2"-10" began in 1998. The 2 1/2"-10" check body is fused epoxy coated ductile iron. In 2010 all leaded bronze trim items were changed to lead free bronze. The checks are accessed from a single cover on the top which is attached with a grooved coupler. The checks are modularized so the springs will be contained when the cover is removed. The 2 1/2"-6" size checks are held in the body by retainer clips while the 8"-12" checks are bolted into the body. The spring tension is contained when the checks are removed from the body. Spring tension does not have to be released to change the check discs. The relief valve utilizes an external sensing line. The relief valve body is made of bronze. The relief valve spring is not contained when the cover is removed. The model 375 is a horizontal piping orientation. The model 475 is able to be changed to provide an up and down or vertical piping orientation. The repair kits for both models will be the same. In 2004 the 375 became available in an "A" model (e.g. 375A). The A model uses a grooved end valve body configuration as opposed to the flanged end valve body.

### BASIC REPAIR KIT

The repair kit contains discs, diaphragm, and O-rings

<u>SIZE</u>	<u>KIT NO</u>
1/2" - 3/4"	RK34-375R
1"	RK1-375R
1 1/4"-2"	RK114-375R
2 1/2"- 3" 375/475	375250 *
2 1/2"- 4" 375A	375400 *
4" 375/475	375400 *
6" 375/475	375600 *
8"-10" 375/475	375800 *

### IMPORTANT FEATURES

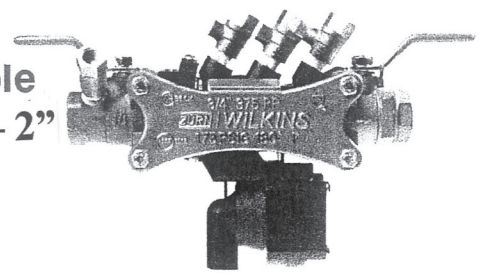
- ~Contained springs
- ~Modular check assemblies
- ~Variable piping orientation
- ~Factory repair information enclosed



# WILKINS<sup>®</sup> MODEL 375

## Reduced Pressure Principle Backflow Preventers 1/2" - 2"

a **ZURN** company



### MATERIALS

Housing	Reinforced Nylon, FDA approved
Fasteners	Stainless Steel, 300 Series
Elastomers	Silicone (FDA Approved)
	Buna Nitrile (FDA Approved)
Internals	Delrin, Nylon, NSF Listed
Springs	Stainless steel, 300 series
Ball Valves	Cast Bronze, ASTM B 584
Struts	Forged Brass, ASTM B 124

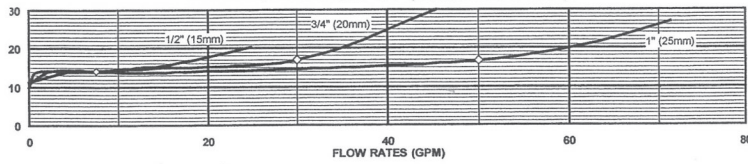
### FEATURES

Sizes: □ 1/2" □ 3/4" □ 1" □ 1-1/4" □ 1-1/2" □ 2"

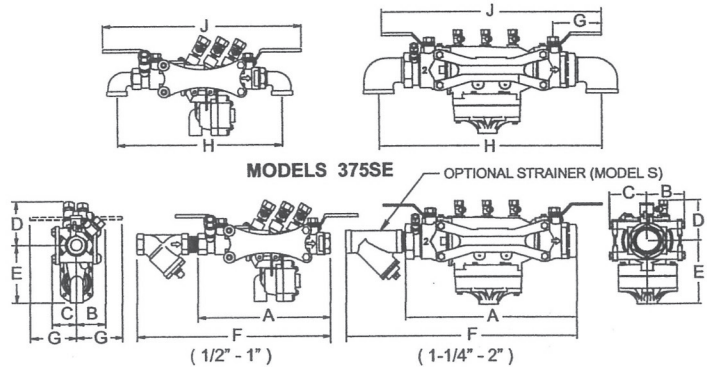
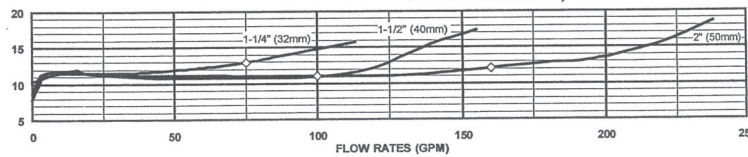
Maximum working water pressure	175 PSI
Maximum working water temperature	180°F
Hydrostatic test pressure	350 PSI
End connections	Threaded FNPT ANSI B1.20.1

### FLOW CHARACTERISTICS

MODEL 375, 375XL 1/2", 3/4" & 1" (STANDARD & METRIC)

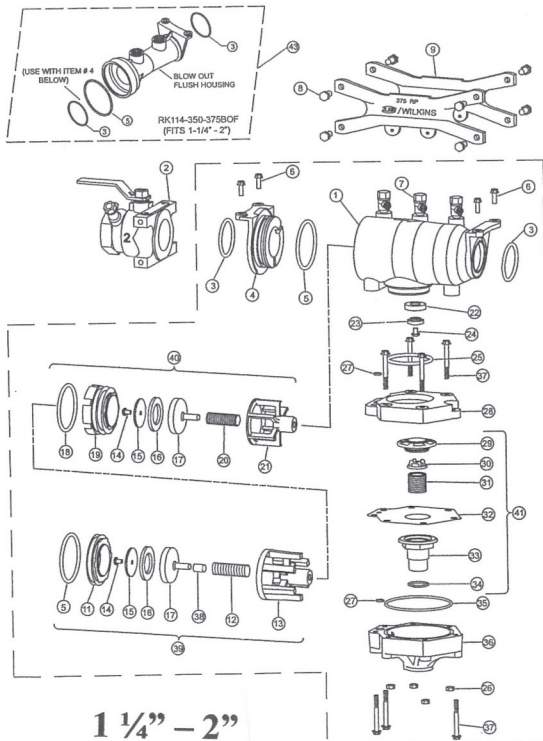


MODEL 375, 375XL 1-1/4" - 2" (STANDARD & METRIC)



DIMENSIONS & WEIGHTS (do not include pkg.)

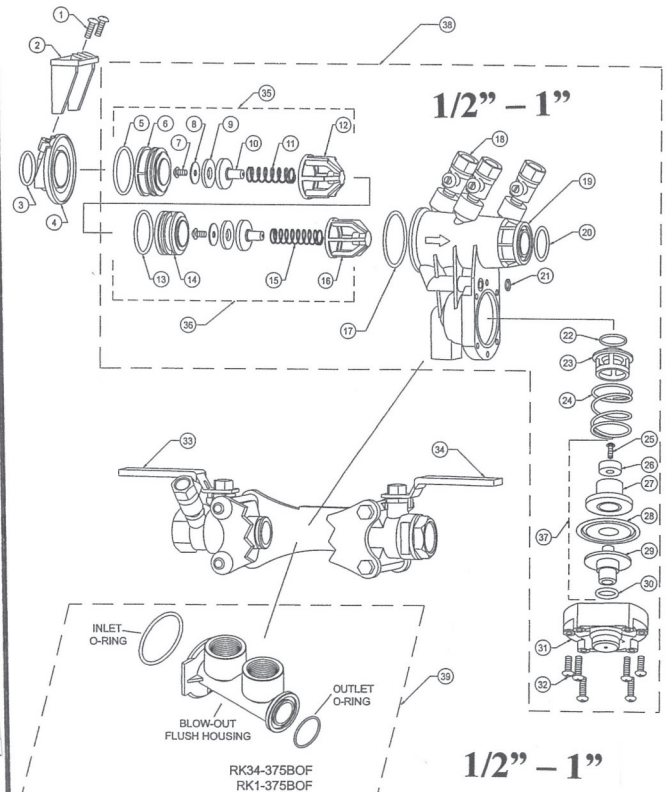
MODEL 375 SIZE	DIMENSIONS (approximate)												WEIGHT										
	A		B		C		D		E		F		G		H		J		LESS BALL VALVES	WITH BALL VALVES			
	in.	mm	in.	mm	in.	mm	in.	mm	in.	mm	in.	mm	in.	mm	in.	mm	in.	mm			lbs.	kg	lbs.
1/2	20	8 7/8	225	115/16	49	1 5/8	41	2 15/16	75	3 7/8	98	12 1/4	311	3	76	10 7/8	276	12 1/4	311	4.7	2.1	5.7	2.6
3/4	20	8 7/8	225	115/16	49	1 5/8	41	2 15/16	75	3 7/8	98	12 5/8	321	3	76	11	279	12 1/4	311	4.7	2.1	5.7	2.6
1	25	11 3/16	284	2 1/4	57	2 1/4	57	3 7/16	87	4	102	14 9/16	370	4	102	13 3/4	349	15 1/4	387	8.2	3.7	9.7	4.4
1-1/4	32	14 7/8	378	3 3/8	86	3 3/8	86	3 3/4	95	5 3/4	146	20 1/2	521	3 3/4	95	18	457	18 1/2	470	18.7	8.5	20.5	9.3
1-1/2	40	15 1/4	387	3 3/8	86	3 3/8	86	3 3/4	95	5 3/4	146	22	559	4 1/2	114	18 3/4	476	20 1/4	514	18.3	8.0	21.5	9.8
2	50	16	406	3 3/8	86	3 3/8	86	3 3/4	95	5 3/4	146	24	610	4 3/4	120.7	20 3/4	527	20 3/4	527	19.4	8.8	23.5	10.7



1 1/4" - 2"

ITEM NO.	DESCRIPTION
1	HOUSING
2	INTEGRAL INLET BV
3	O-RING
4	SLEEVE
5	O-RING
6	BOLT
7	TEST COCKS
8	BOLT
9	STRUT (NOT AVAILABLE)
10	INTEGRAL OUTLET BV
11	SEAT, #1
12	SPRING, #1
13	SPRING RETAINER, #1
14	BOLT
15	SEAL RETAINER
16	SEAL WASHER
17	POPPET
18	O-RING
19	SEAT, #2
20	SPRING, #2
21	SPRING RETAINER, #2
22	SEAL WASHER
23	SEAL RETAINER
24	BOLT
25	O-RING
26	NUT
27	O-RING
28	BODY, RV
29	SEAT, RV
30	SPRING GUIDE
31	SPRING, RV
32	DIAPHRAGM
33	PLUNGER, RV
34	O-RING
35	O-RING
36	COVER
37	BOLT
38	SPACER
39	#1 CHECK ASSY
40	#2 CHECK ASSY
41	RELIEF VALVE STEM ASSY
42	VESSEL W/ CHECKS & RV
43	HOUSING, BLOW OUT/FLUSH

1 1/4" - 2"



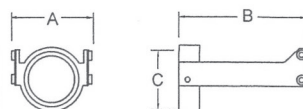
1/2" - 1"

1/2" - 1"

DIMENSIONS & WEIGHTS (do not include pkg.)

MODEL	SIZES	FOR MODEL	DIMENSIONS (approximate)				OUTLET PIPE SIZE	WEIGHT	
			A	B	C	D		lbs.	kg
AG-11	1/2" - 1"	375	3 3/4	95	5 1/2	140	2" IPS Slip	1	0.5
AG-11V	1/2" - 1"	375 VERT.	-	-	-	-	2" IPS Slip	1	0.5
AG-12	1 1/4" - 2"	375	6 1/2	165	8	200	3" IPS Slip	1	0.5

### Air Gap Drain Fitting

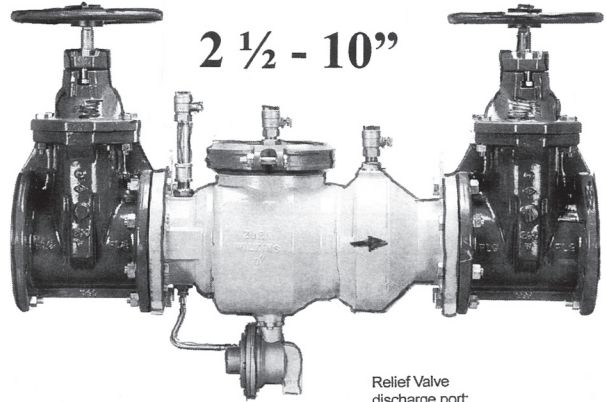


ITEM NO.	DESCRIPTION	13	O-RING, #2 CHECK SEAT	27	RV LOWER PLUNGER
1	WEDGE SCREW	14	#2 CHECK SEAT	28	DIAPHRAGM
2	WEDGE	15	#2 CHECK SPRING	29	RV UPPER PLUNGER
3	O-RING, SLEEVE	16	#2 CHECK SPRING RETAINER	30	O-RING, RV STEM
4	SLEEVE	17	O-RING, HOUSING INLET	31	RELIEF VALVE COVER
5	O-RING, #1 CHECK SEAT	18	TEST COCK	32	RV COVER SCREW, SHORT
6	#1 CHECK SEAT	19	CHECK HOUSING	33	RV COVER SCREW, LONG
7	POPPET SCREW	20	O-RING, HOUSING OUTLET	34	INLET BALL VALVE
8	CHECK SEAL RETAINER	21	O-RING, RV COVER	35	OUTLET BALL VALVE
9	CHECK SEAL RING	22	O-RING, RV SEAT	36	#1 CHECK ASSEMBLY
10	POPPET	23	RELIEF VALVE SEAT	37	#2 CHECK ASSEMBLY
11	#1 CHECK SPRING	24	RELIEF VALVE SPRING	38	RELIEF VALVE STEM ASSY
12	#1 CHECK SPRING RETAINER	25	RV SEAL RETAINING SCREW	39	COMPLETE VESSEL ASSY
		26	RV SEAL RING		

### MATERIALS

Main valve body	Ductile Iron ASTM A 536 Grade 4
Access covers	Ductile Iron ASTM A 536 Grade 4
Coatings	FDA Approved fusion epoxy finish
Internals	Stainless steel, 300 Series
	NORYL™, NSF Listed
Fasteners	Stainless Steel, 300 Series
Seal rings	EPDM (FDA approved)
O-rings	Buna Nitrile (FDA approved)
Springs	Stainless Steel, 300 Series
Sensing line	Stainless Steel, braided hose

Maximum working water pressure	175 PSI
Maximum working water temperature	140°F
Hydrostatic test pressure	350 PSI
End connections (Grooved for steel pipe)	AWWA C606
(Flanged) ANSI B16.1	Class 125



2 1/2" - 10"

Relief Valve  
discharge port:  
2 1/2" - 6" - 2.75 sq. in.  
8" - 10" - 3.69 sq. in.

375 2 1/2" - 10"

### DIMENSIONS & WEIGHTS (do not include pkg.)

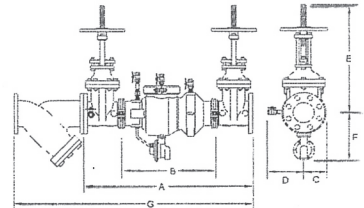
DIMENSIONS (approximate)										WEIGHT																	
MODEL SIZE		A		B LESS GATE VALVES		C		D		E OS&Y OPEN		E OS&Y CLOSED		E NRS GATE		F		G		H		WITHOUT GATE VALVES		WITH NRS VALVES		WITH OS&Y GATE VALVES	
in.	mm	in.	mm	in.	mm	in.	mm	in.	mm	in.	mm	in.	mm	in.	mm	in.	mm	in.	mm	in.	mm	lbs.	kg	lbs.	kg	lbs.	kg
2 1/2	65	31	787	15 7/8	403	7 1/4	184	3 3/4	95	16 3/8	416	13 7/8	352	11 3/8	289	9 1/2	241	8 3/8	213	41 1/4	1048	60	27.2	162	73.5	170	77.2
3	80	32	813	15 7/8	403	7 1/4	184	3 3/4	95	16 3/8	479	15 5/8	397	12 3/8	314	9 1/2	241	8 3/8	213	42 3/4	1086	60	27.2	184	83.5	190	86.3
4	100	37 5/8	956	19 1/2	495	8	203	4 1/2	114	22 3/4	578	18 1/4	464	14 3/4	375	11	279	7 1/4	184	52 3/4	1340	98	44.5	278	126.2	288	130.8
6	150	44 3/4	1137	23 1/2	597	10	254	6	152	30 1/8	765	23 3/4	603	19	483	12 3/8	314	9 1/4	235	62 3/4	1594	175	79.5	459	208.4	475	215.6
8	200	60 3/4	1543	37 3/4	959	11	279	10	254	37 3/4	959	29 1/4	743	22 1/2	572	15 3/8	391	16 3/4	426	85	2159	377	171	829	376.4	853	387.3
10	250	63 3/4	1619	37 3/4	959	11	279	10	254	45 3/4	1162	35 3/8	899	26 1/2	673	15 3/8	391	16 3/4	426	93 1/4	2369	407	185	1167	530	1225	556

Attention: Model 375A (grooved body) and Model 375 (flange body) have different lay lengths.

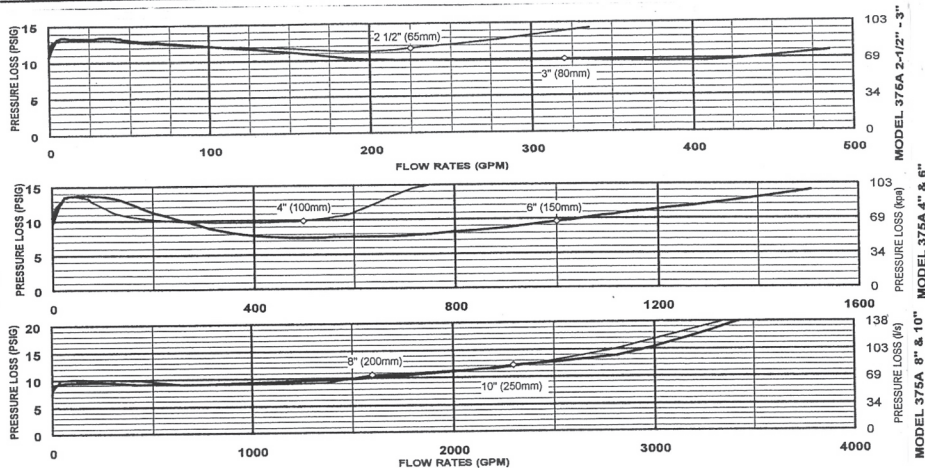
375 A 2 1/2" - 10"

### DIMENSION (approximate)

MODEL 375A SIZE	A		A WITH BUTTERFLY VALVES		B LESS GATE VALVES		C		D		E OS&Y OPEN		E OS&Y CLOSED		E NRS GATE		E WITH BUTTERFLY VALVES		F		G		H	
in. mm	in.	mm	in.	mm	in.	mm	in.	mm	in.	mm	in.	mm	in.	mm	in.	mm	in.	mm	in.	mm	in.	mm	in.	mm
2 1/2 65 35 1/8 892 32 1/8 816 20 1/8 511 4 1/2 114 7 1/4 184 16 3/8 416 13 7/8 352 11 3/8 289 8 203 11 279 45 1/4 1150 7 1/4 184																								
3 80 36 1/8 918 33 838 20 1/8 511 4 1/2 114 7 1/4 184 18 7/8 479 15 5/8 397 12 3/8 314 8 203 11 279 46 7/8 1191 7 1/4 184																								
4 100 38 1/4 972 33 1/4 845 19 7/8 505 4 1/2 114 8 203 22 3/4 578 18 1/4 464 14 3/4 375 9 1/8 232 11 279 53 3/8 1356 7 1/4 184																								
6 150 47 1/4 1200 40 1/4 1022 25 7/8 657 5 1/2 140 10 254 30 1/8 765 23 3/4 603 19 483 10 1/8 257 12 3/8 314 65 3/8 1661 9 1/4 235																								
8 200 62 1575 55 1397 38 1/2 978 10 254 11 279 37 3/4 959 29 1/4 743 22 1/2 572 11 15/16 303 15 3/8 391 86 3/8 2194 13 7/8 333																								
10 250 64 5/8 1641 58 1/2 1485 38 1/2 978 10 254 12 305 45 3/4 1162 35 3/8 899 26 1/2 673 13 5/16 338 15 3/8 391 94 3/8 2398 16 7/16 418																								



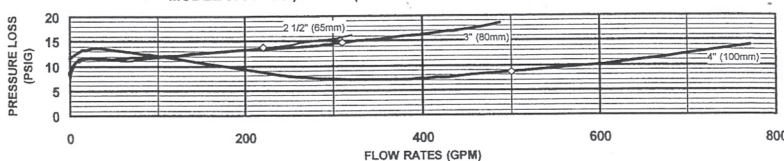
### 375A FLOW CHARACTERISTICS



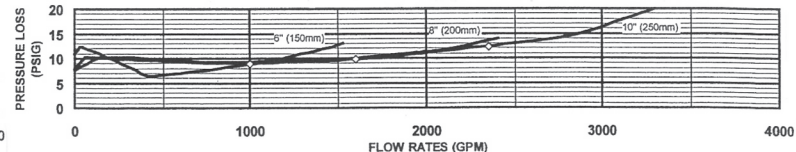
375

### FLOW CHARACTERISTICS

MODEL 375 2 1/2", 3" & 4" (STANDARD & METRIC)



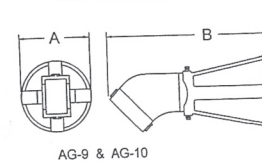
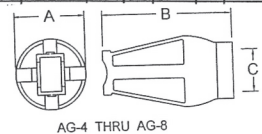
MODEL 375 6", 8" & 10" (STANDARD & METRIC)



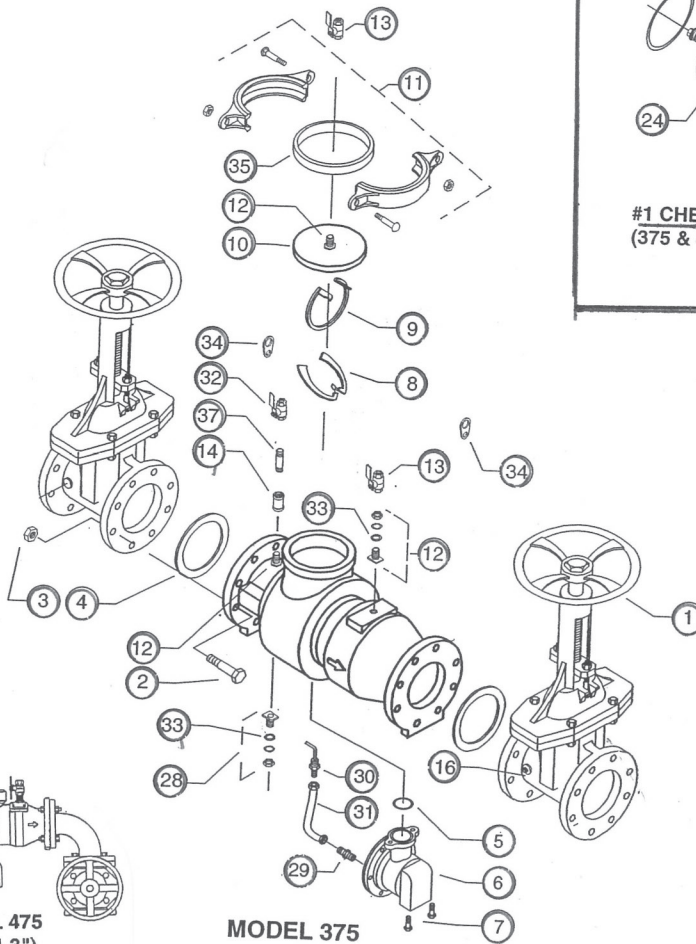
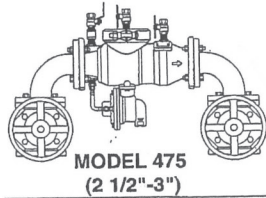
### Air Gap Drain Fitting

#### DIMENSIONS & WEIGHTS (do not include pkg.)

MODEL	DIMENSIONS (approximate)							WEIGHT	
	SIZES	FOR MODEL	A		B		C	OUTLET PIPE SIZE	
			in.	mm	in.	mm			
AG-6	2 1/2" - 3"	475V	5 3/8	137	10	254	3" NPT	5	2.3
AG-6	2 1/2" - 6"	375, 475	5 3/8	137	10	254	3" NPT	5	2.3
AG-7	8" - 10"	375, 475	7	178	11	279	4" NPT	8	3.6
AG-9	4" - 6"	475V	5 3/8	137	14 1/2	368	3" NPT	9	4
AG-10	8" - 10"	475V	7	178	16 1/2	413	4" NPT	11	5



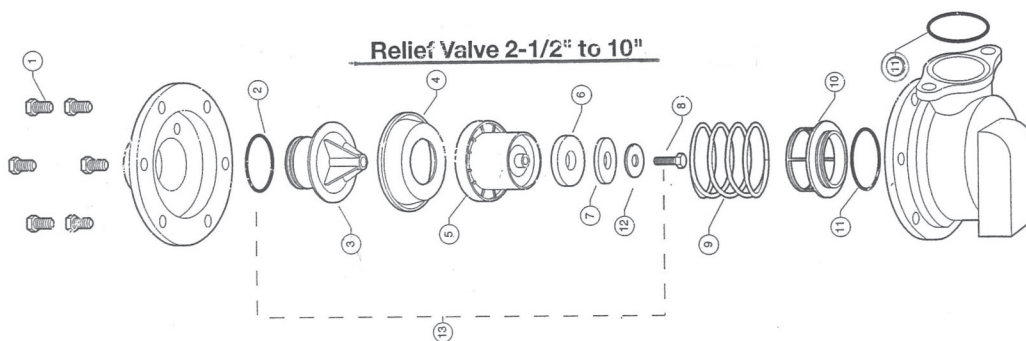
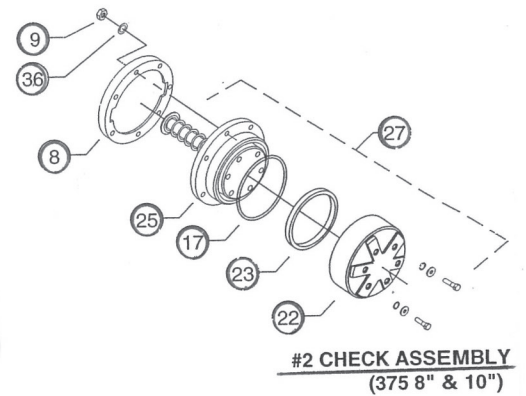
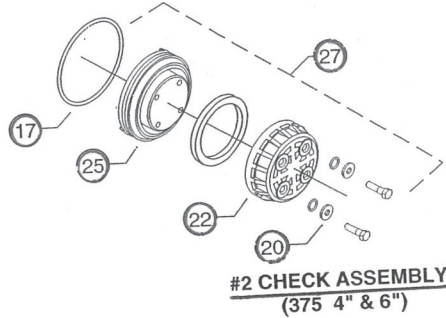
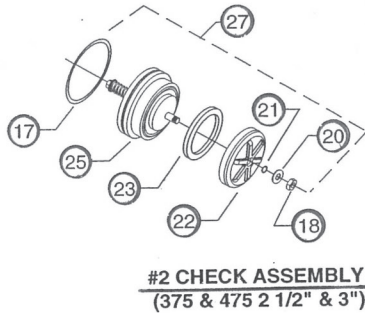
ITEM NO.	DESCRIPTION
1	GATE VALVE, NRS
2	GATE VALVE, OS&Y
3	GATE VALVE, OS&Y (FXG)
4	BOLT, FLANGE
5	NUT, FLANGE
6	GASKET, FLANGE
7	O-RING, CONTROL UNIT
8	CONTROL UNIT
9	BOLT, CONTROL UNIT
10	SEAT RETAINER #2
11	SEAT RETAINER #1
12	COVER
13	COVER RETAINER ASSY
14	BULKHEAD FITTING ASSY
15	BALL VALVE
16	COUPLING
17	NIPPLE, LONG
18	PLUG
19	O-RING
20	NUT, BOLT, POPPET RETAINER
21	HANDLE, #1 POPPET ASSY
22	WASHER
23	O-RING
24	POPPET RETAINER
25	SEAL RING
26	SEAT ASSEMBLY, #1 POPPET
27	SEAT ASSEMBLY, #2 POPPET
28	#1 CHECK ASSEMBLY
29	#2 CHECK ASSEMBLY
30	BULKHEAD FITTING ASSY
31	SENSING TUBE FITTING
32	PITOT TUBE ASSY (4", 6" & 8")
33	SENSING TUBE
34	BALL VALVE
35	BULKHEAD FITTING, GASKET
36	LIFTING LUG
37	GASKET, COVER RETAINER
38	WASHER
39	NIPPLE, LONG



**#1 CHECK ASSEMBLY**  
(375 & 475 2 1/2" & 3")

**#1 CHECK ASSEMBLY**  
(375 4" & 6")

**#1 CHECK ASSEMBLY**  
(375 8" & 10")



RELIEF VALVE COMPLETE	
ITEM NO.	DESCRIPTION
1	BOLT, COVER
2	O-RING
3	UPPER PLUNGER
4	DIAPHRAGM
5	LOWER PLUNGER
6	SEAL RING
7	SEAL RETAINER
8	SCREW
9	CU SPRING
10	CU SEAT
11	O-RING
12	WASHER
13	STEM ASSY.

## MATERIALS

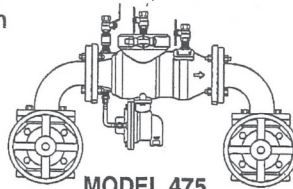
Main valve body — Ductile Iron ASTM A 536 Grade 4  
 Access covers — Ductile Iron ASTM A 536 Grade 4  
 Coatings — FDA Approved fusion epoxy finish  
 Internals — Stainless steel, 300 Series  
 NORYL™, NSF Listed  
 Fasteners — Stainless Steel, 300 Series  
 Elastomers — EPDM (FDA approved)  
 Buna Nitrile (FDA approved)  
 Polymers — NORYL™, NSF Listed  
 Springs — Stainless steel, 300 series

Maximum working water pressure — 175 PSI  
 Maximum working water temperature — 140°F  
 Hydrostatic test pressure — 350 PSI  
 End connections (Grooved for steel pipe) — AWWA C606-87  
 (Flanged) — ANSI B16.1  
 Class 125

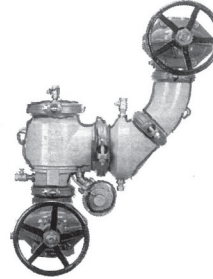
**WILKINS**  
 A ZURN COMPANY

## MODEL 475

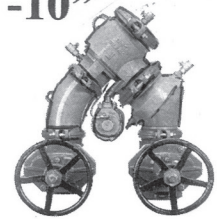
2 ½ -10"



MODEL 475  
 (2 1/2"-3")

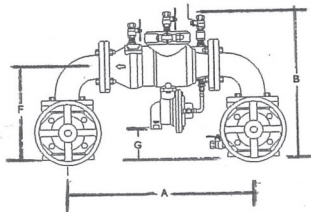


MODEL 475V SERIES

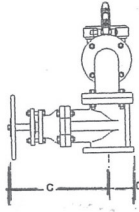


MODEL 475 SERIES

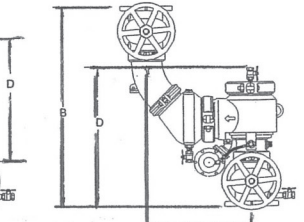
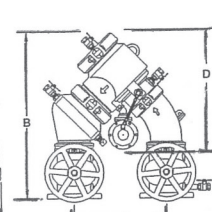
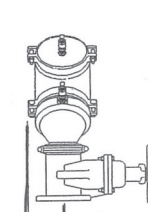
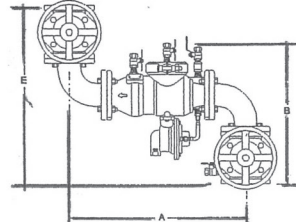
4-10"



Model 475 2 1/2 - 3"



Model 475V



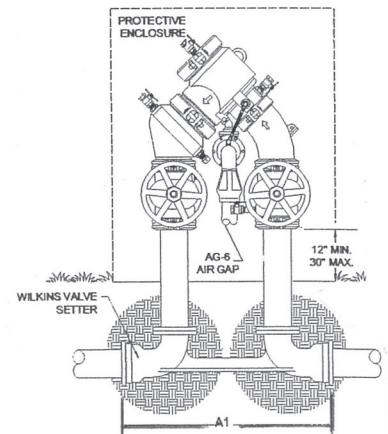
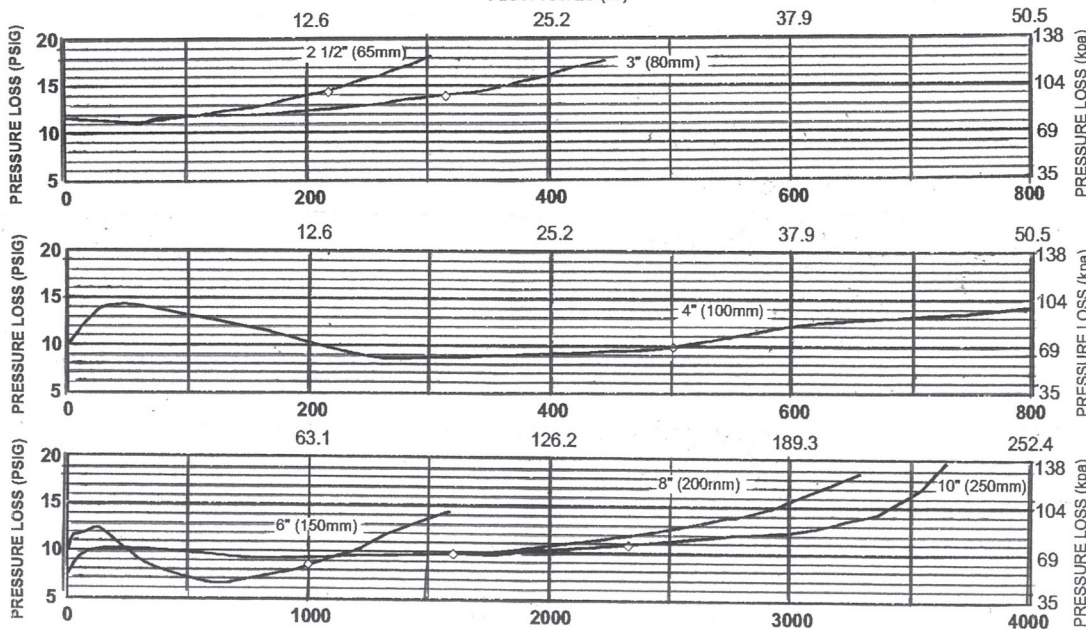
4-10"

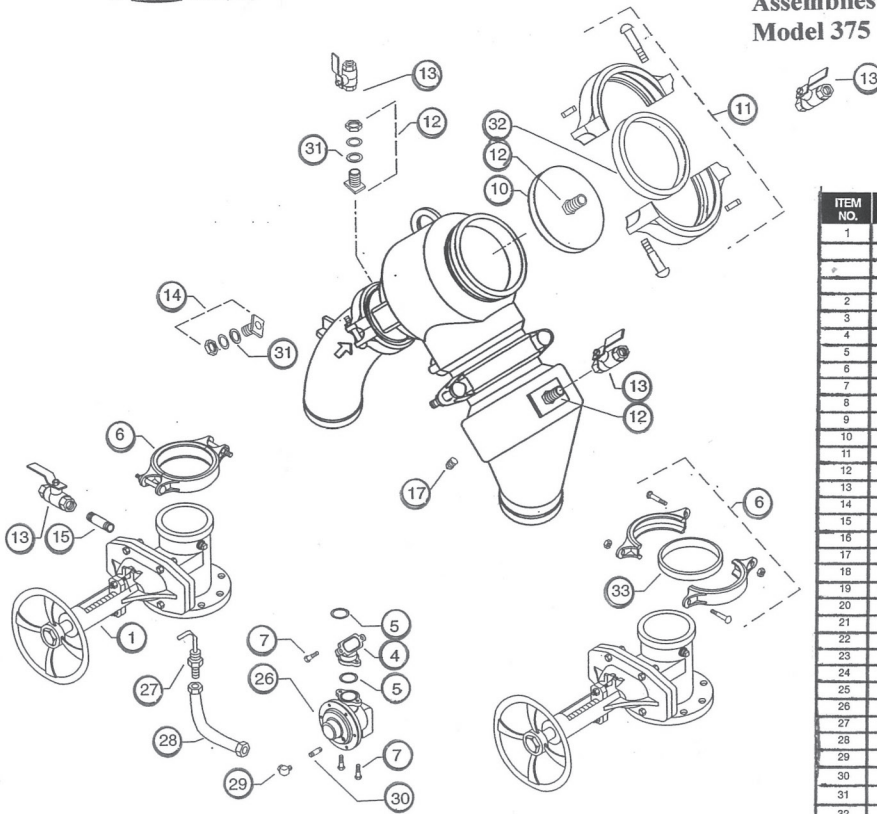
## DIMENSIONS & WEIGHTS (do not include pkg.)

MODEL SIZE		DIMENSION (approximate)																WEIGHT							
		A		B		C OS&Y OPEN		C OS&Y CLOSED		C NRS GATE		D		E		F		G		WITHOUT GATE VALVES		WITH NRS GATE VALVES		WITH OS&Y GATE VALVES	
						in.	mm	in.	mm	in.	mm									in.	mm	lbs.	kg	lbs.	kg
2 1/2	65	26 1/4	667	20 1/2	521	16 3/8	416	13 7/8	352	11 3/8	289	3 3/4	95	26 1/8	664	13 1/8	333	4 1/8	105	87	39.5	196	88.9	205	93.1
3	80	27 1/4	692	21 1/2	546	18 7/8	479	15 5/8	397	12 3/8	314	3 3/4	95	27 1/8	689	13 9/16	345	4 9/16	116	112	50.8	234	106.2	240	109

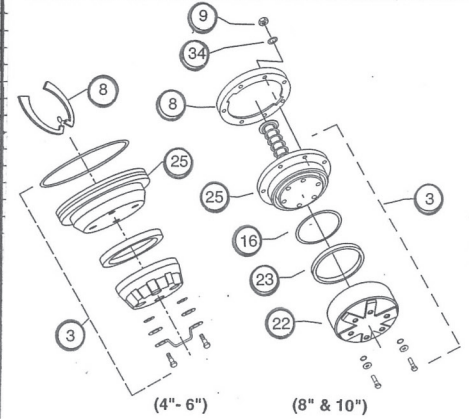
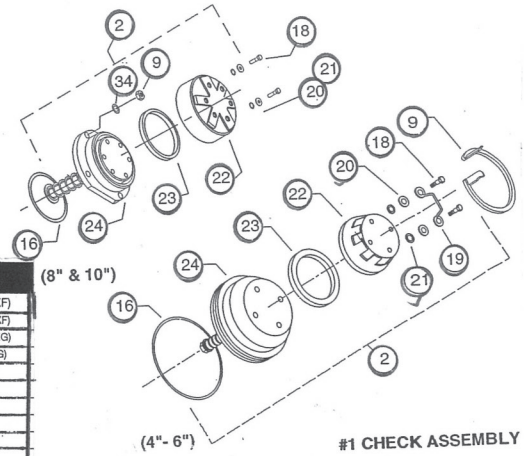
MODEL SIZE	DIMENSIONS (approximate)																				WEIGHT					
	A		A1 SETTER END TO END FLS		A1 SETTER END TO END MJS		B WITH GATE VALVES		B LESS GATE VALVES		C OS&Y OPEN		C OS&Y CLOSED		C NRS GATES		D		E		LESS GATE VALVES		NRS GATE VALVES		OS&Y GATE VALVES	
			in.	mm	in.	mm	in.	mm	in.	mm	in.	mm	in.	mm	in.	mm	in.	mm	in.	mm	lbs.	kg	lbs.	kg	lbs.	kg
	in.	mm	in.	mm	in.	mm	in.	mm	in.	mm	in.	mm	in.	mm	in.	mm	in.	mm	in.	mm	lbs.	kg	lbs.	kg	lbs.	kg
4" 475	18 5/16	465	31 5/16	795	29 5/16	745	30	762	21	533	22 3/4	578	18 1/4	460	14 3/4	375	23 1/4	591	5	127	97	44	277	126	287	130
475V	18 15/16	481	N/A	N/A	N/A	N/A	36 1/2	927	18 1/2	470	22 3/4	578	18 1/4	460	14 3/4	375	21	533	5	127	97	44	277	126	287	130
6" 475	18 11/16	475	34 3/4	883	32 3/4	832	35 1/2	902	25	635	30 1/8	765	23 3/4	603	19	483	26	660	6	152	171	78	455	207	471	214
475V	21	533	N/A	N/A	N/A	N/A	42	1067	21	533	30 1/8	765	23 3/4	603	19	483	22	559	6	152	171	78	455	204	471	214
8" 475	29	737	47	1194	44 5/8	1133	46	1168	34 7/16	875	37 3/4	959	29 1/4	743	22 1/2	572	33 1/4	845	10	254	405	184	857	389	881	400
475V	30 5/16	770	N/A	N/A	N/A	N/A	53 1/2	1359	30 5/16	770	37 3/4	959	29 1/4	743	22 1/2	572	37 7/8	962	10	254	405	184	857	389	881	400
10" 475	29	737	51	1295	47	1194	47 1/2	1207	34 7/16	875	45 3/4	1162	35 3/8	899	26 1/2	673	33 1/4	845	10	254	423	192	1051	477	1097	498
475V	30 5/16	770	N/A	N/A	N/A	N/A	56 1/2	1435	30 5/16	770	45 3/4	1162	35 3/8	899	26 1/2	673	39 3/8	1000	10	254	423	192	1051	477	1097	498

## FLOW RATES (l/s)

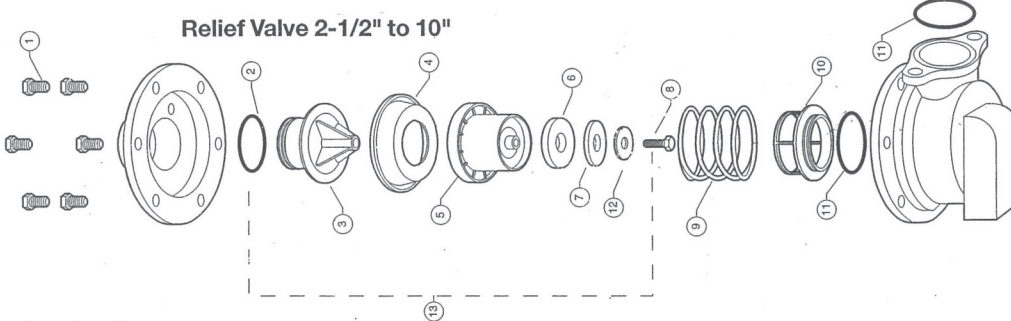




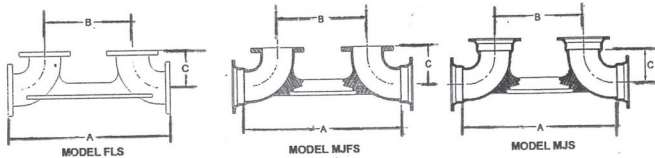
ITEM NO.	DESCRIPTION
1	GATE VALVE, NRS (GXF)
	GATE VALVE, OS&Y (GXF)
	GATE VALVE, OS&Y (GXG)
	GATE VALVE, NRS (GXG)
2	#1 CHECK ASSEMBLY
3	#2 CHECK ASSEMBLY
4	CU ELBOW
5	O-RING, ELBOW
6	GROOVED COUPLING
7	BOLT
8	SEAT RETAINER ASSEMBLY #2
9	SEAT RETAINER #1
10	COVER
11	COVER RETAINER ASSEMBLY
12	BULKHEAD FITTING ASSEMBLY
13	BALL VALVE
14	BULKHEAD FITTING ASSEMBLY
15	NIPPLE, LONG
16	O-RING, SEAT ASSEMBLY
17	PLUG/CAP
18	BOLT, POPPET RETAINER
19	HANDLE, #1 POPPET ASSEMBLY
20	WASHER
21	O-RING
22	POPPET RETAINER
23	SEAL RING
24	SEAT ASSEMBLY, #1 POPPET
25	SEAT ASSEMBLY, #2 POPPET
26	CONTROL UNIT ASSEMBLY
27	PITOT TUBE ASSEMBLY
28	SENSING TUBE
29	ELBOW
30	NIPPLE
31	BULKHEAD FITTING, GASKET
32	GASKET, COVER RETAINER
33	GASKET, GROOVED COUPLING
34	WASHER



**Relief Valve 2-1/2" to 10"**

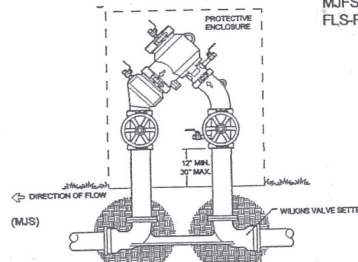


ITEM NO.	DESCRIPTION
1	BOLT, COVER
2	O-RING
3	UPPER PLUNGER
4	DIAPHRAGM
5	LOWER PLUNGER
6	SEAL RING
7	SEAL RETAINER
8	SCREW
9	CU SPRING
10	CU SEAT
11	O-RING
12	WASHER
13	STEM ASSY.



**DIMENSIONS & WEIGHTS (do not include pkg.)**

MODEL	FOR MODEL	A		B		C		WEIGHT	
		in.	mm	in.	mm	in.	mm	lbs.	kg
2 1/2-FLS	2 1/2" ALL	36	914	26	660	5	127	50	23
3-FLS	3" ALL	38	965	27	686	5 1/2	140	58	26
3-MJFS	3" ALL	35 13/16	910	27	686	5 1/2	140	57	26
3-MJS	3" ALL	35 13/16	910	27	686	4 7/16	113	55	25
4-FLS	4" ALL	31 5/16	795	18 5/16	465	6 1/2	165	82	37
4-MJFS	4" ALL	29 5/16	745	18 5/16	465	6 1/2	165	90	41
4-MJS	4" ALL	29 5/16	745	18 5/16	465	7 7/8	200	96	44
6-FLS	6" ALL	34 11/16	881	18 11/16	475	8	203	168	75
6-MJFS	6" ALL	32 11/16	830	18 11/16	475	8	203	190	73
6-MJS	6" ALL	32 11/16	830	18 11/16	475	7 1/16	179	178	81
8-FLS	8" ALL	47	1194	29	737	9	229	224	102
8-MJFS	8" ALL	44 5/8	1133	29	737	9	229	215	98
8-MJS	8" ALL	44 5/8	1133	29	737	7 13/16	198	194	88
10-FLS	10" ALL	51	1295	29	737	11	279	278	126
10-MJFS	10" ALL	47	1194	29	737	11	279	257	117
10-MJS	10" ALL	47	1194	29	737	9	229	227	103



**APPLICATION**

Designed to ease the installation of the N-Shape Wilkins Model 450 and 475 series Backflow Prevention Assemblies. Ideal for retrofitting existing installations, or where space is limited. The integral thrust support between the elbows eliminates the need for additional thrust blocking.

**MATERIALS**

Setter body Ductile Iron ASTM A 536 Grade 4  
Coatings FDA Approved fusion epoxy finish  
Maximum working water pressure 175 PSI  
Maximum working water temperature 140°F  
MJS-Mechanical Joint by Mechanical Joint AWWA C153-88  
MJFS-Mechanical Joint by Flange AWWA C153-88  
FLS-Flange by Flange ANSI B16.1 CLASS 125