

# WILKINS 375AST

## SIZE

2 1/2", 3", 4", 6", 8", 10"

## DESCRIPTION

This is a reduced pressure assembly. Production began in 2011. This assembly is similar to the model 375A except the check body is fabricated from stainless steel tubing. There is a single access cover for the check valves on the top. The cover is attached by a grooved end coupling. The check valves are of a modular construction made of glass filled noryl. The 2 1/2"-6" size check modules are retained in the body by retainer clips. The checks of the 8"-10" size are bolted into the body. The check modules are repairable for replacement of the check disc. The relief valve body is made of a lead free bronze and attached under the check body. The design uses an external sensing line to the relief valve. The relief valve cover is bolted to the relief valve body and there will be spring tension on the cover when it is removed.

## REPAIR KIT

Repair kit contains discs, diaphragm, and O'ring

| <u>SIZE</u> | <u>KIT NO</u> |
|-------------|---------------|
| 2 1/2"-4"   | 375400 *      |
| 6"          | 375600 *      |
| 8"-10"      | 375800 *      |

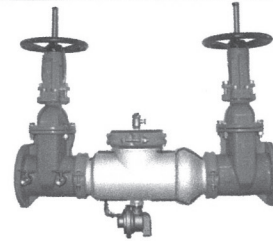
## IMPORTANT FEATURES

- ~Stainless steel body
- ~Modular check valves
- ~Single access check cover



### FEATURES

Sizes: □ 2 1/2" □ 3" □ 4" □ 6" □ 8" □ 10"  
 Maximum working water pressure 175 PSI  
 Maximum working water temperature 140°F  
 Hydrostatic test pressure 350 PSI  
 End connections (Grooved for steel pipe) AWWA C606  
 (Flanged) ANSI B16.1  
 Class 125



2 1/2" – 10"

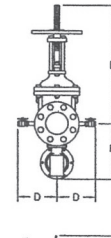
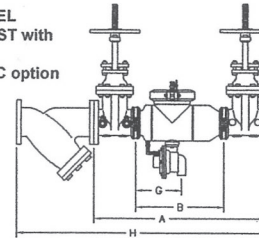
### MATERIALS

Main valve body 304L Stainless steel  
 Access covers 304L Stainless steel  
 Coatings FDA Approved electrostatic epoxy finish  
 Internals Stainless steel, 300 Series  
 NORYL™, NSF Listed  
 Fasteners & Springs Stainless Steel, 300 Series  
 Seal rings EPDM (FDA approved)  
 O-rings Buna Nitrile (FDA approved)  
 Sensing line Stainless Steel, braided hose

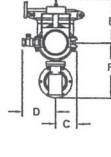
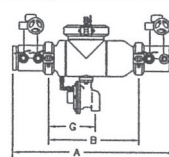
### DIMENSIONS & WEIGHTS (do not include pkg.)

| MODEL 375AST SIZE | WEIGHT        |         |                      |         |                       |         |                      |         |                       |         |                             |  |
|-------------------|---------------|---------|----------------------|---------|-----------------------|---------|----------------------|---------|-----------------------|---------|-----------------------------|--|
|                   | WITHOUT GATES |         | WITH NRS GATES (GXF) |         | WITH OS&Y GATES (GXF) |         | WITH NRS GATES (GXG) |         | WITH OS&Y GATES (GXG) |         | WITH BUTTERFLY VALVES (GXG) |  |
| in. mm            | lbs. kg       | lbs. kg | lbs. kg              | lbs. kg | lbs. kg               | lbs. kg | lbs. kg              | lbs. kg | lbs. kg               | lbs. kg | lbs. kg                     |  |
| 2 1/2 65          | 41 19         | 102 46  | 120 54               | 92 42   | 110 50                | 64 29   |                      |         |                       |         |                             |  |
| 3 80              | 42 19         | 119 54  | 137 62               | 107 49  | 125 57                | 67 30   |                      |         |                       |         |                             |  |
| 4 100             | 43 20         | 176 80  | 212 96               | 156 71  | 192 87                | 79 36   |                      |         |                       |         |                             |  |
| 6 150             | 71 32         | 288 130 | 346 157              | 258 117 | 316 143               | 136 62  |                      |         |                       |         |                             |  |
| 8 200             | 177 80        | 579 263 | 661 300              | 539 244 | 607 275               | 308 140 |                      |         |                       |         |                             |  |
| 10 250            | 177 80        | 784 356 | 880 399              | 732 332 | 822 373               | 414 188 |                      |         |                       |         |                             |  |

MODEL 375AST with OSY & FSC option



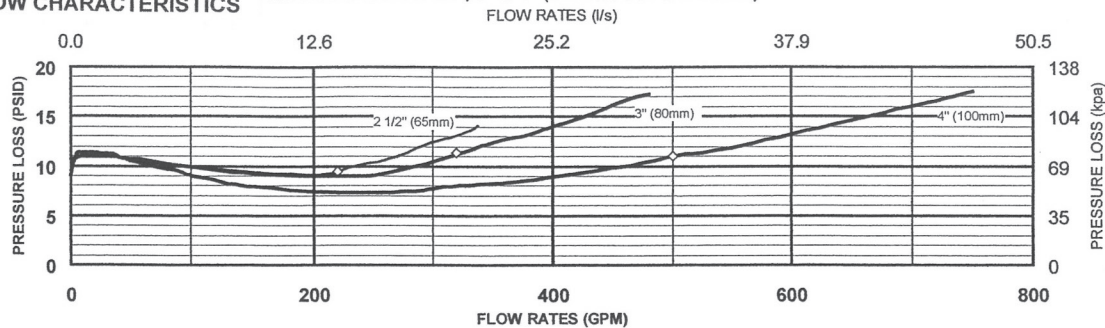
MODEL 375AST with BGVIC option



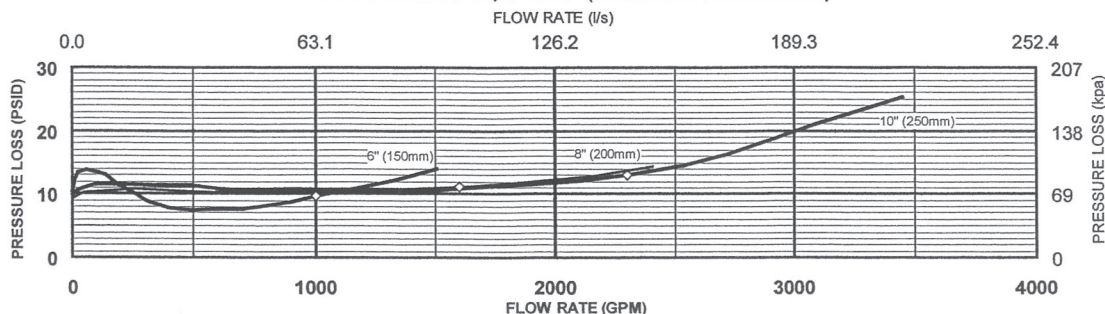
Relief Valve discharge port:  
 2 1/2" - 6" - 2.75 sq. in.  
 8" - 10" - 3.69 sq. in.

| MODEL 375AST SIZE | DIMENSION (approximate) |             |                         |           |                    |            |             |            |            |            |            |             |             |        |               |        |                         |        |        |        |        |        |        |  |
|-------------------|-------------------------|-------------|-------------------------|-----------|--------------------|------------|-------------|------------|------------|------------|------------|-------------|-------------|--------|---------------|--------|-------------------------|--------|--------|--------|--------|--------|--------|--|
|                   | A                       |             | A WITH BUTTERFLY VALVES |           | B LESS GATE VALVES |            | C           |            | D          |            | E NRS GATE |             | E OS&Y OPEN |        | E OS&Y CLOSED |        | E WITH BUTTERFLY VALVES |        | F      |        | G      |        | H      |  |
| in. mm            | in. mm                  | in. mm      | in. mm                  | in. mm    | in. mm             | in. mm     | in. mm      | in. mm     | in. mm     | in. mm     | in. mm     | in. mm      | in. mm      | in. mm | in. mm        | in. mm | in. mm                  | in. mm | in. mm | in. mm | in. mm | in. mm | in. mm |  |
| 2 1/2 65          | 31 7/8 810              | 28 3/4 730  | 16 5/8 422              | 4 1/2 114 | 7 1/4 184          | 11 1/2 292 | 17 3/4 451  | 15 3/8 391 | 8 203      | 9 3/4 248  | 8 5/8 219  | 42 1067     |             |        |               |        |                         |        |        |        |        |        |        |  |
| 3 80              | 32 7/8 835              | 29 3/8 746  | 16 5/8 422              | 4 1/2 114 | 7 1/4 184          | 12 3/4 324 | 20 1/4 514  | 17 432     | 8 203      | 9 3/4 248  | 8 5/8 219  | 43 1/2 1105 |             |        |               |        |                         |        |        |        |        |        |        |  |
| 4 100             | 34 7/8 886              | 30 1/4 768  | 16 5/8 422              | 4 1/2 114 | 8 203              | 14 1/2 368 | 22 1/2 572  | 18 1/4 464 | 9 1/8 232  | 9 3/4 248  | 8 5/8 219  | 50 1270     |             |        |               |        |                         |        |        |        |        |        |        |  |
| 6 150             | 43 1/2 1105             | 36 1/2 927  | 22 1/4 565              | 5 1/2 140 | 10 254             | 18 457     | 30 1/2 775  | 24 1/4 616 | 10 1/8 257 | 10 3/4 273 | 11 1/4 286 | 61 5/8 1565 |             |        |               |        |                         |        |        |        |        |        |        |  |
| 8 200             | 52 3/4 1340             | 45 3/4 1162 | 29 1/2 749              | 9 1/4 235 | 11 279             | 21 1/8 537 | 37 940      | 28 1/2 724 | 18 1/2 470 | 15 5/8 397 | 13 1/4 337 | 77 1/8 1959 |             |        |               |        |                         |        |        |        |        |        |        |  |
| 10 250            | 55 3/4 1416             | 49 3/4 1264 | 29 1/2 749              | 9 1/4 235 | 12 305             | 24 3/4 629 | 45 5/8 1159 | 34 3/4 883 | 18 1/2 470 | 15 5/8 397 | 13 1/2 343 | 85 3/8 2169 |             |        |               |        |                         |        |        |        |        |        |        |  |

### FLOW CHARACTERISTICS MODEL 375AST 2 1/2", 3" & 4" (STANDARD & METRIC)

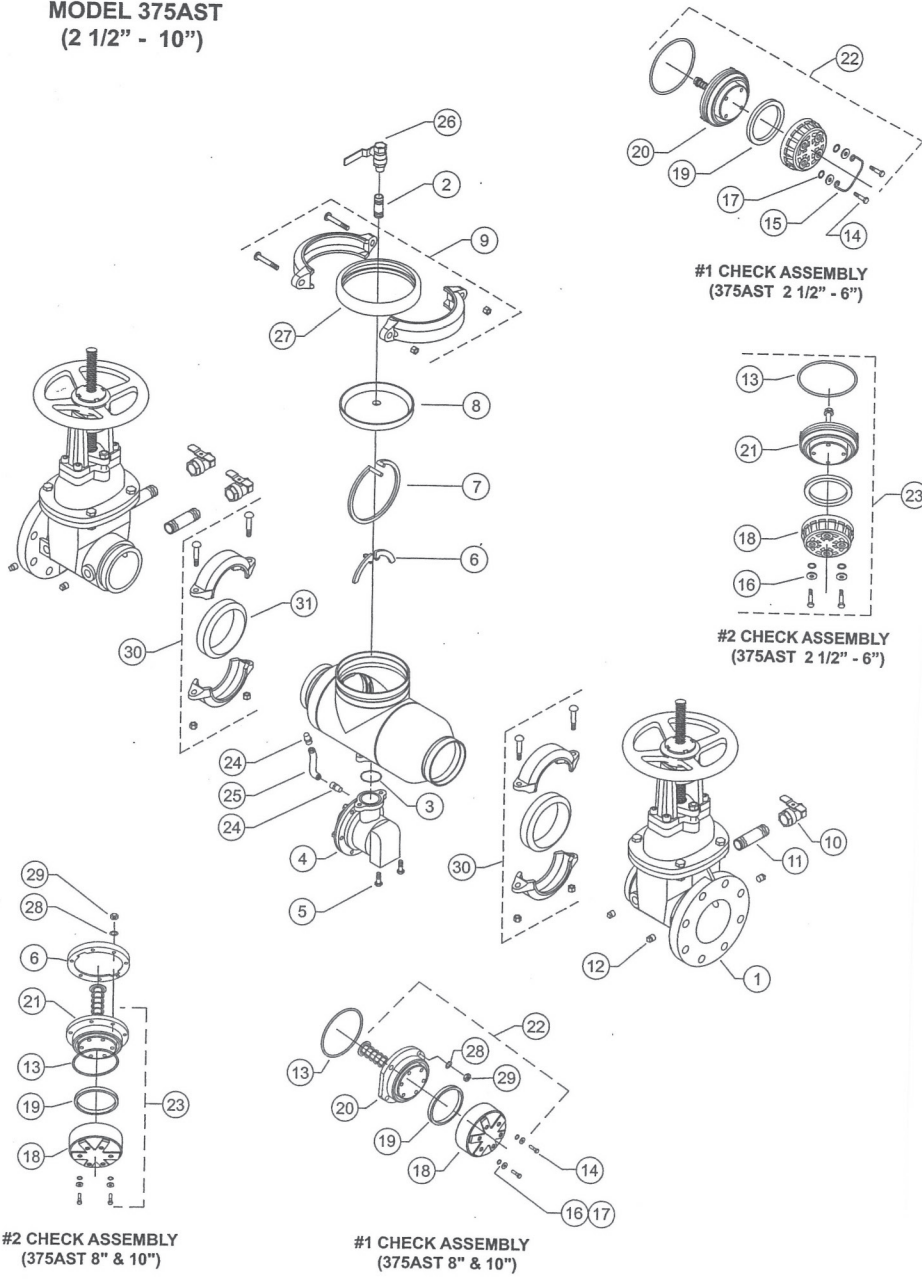


### MODEL 375AST 6", 8" & 10" (STANDARD AND METRIC)



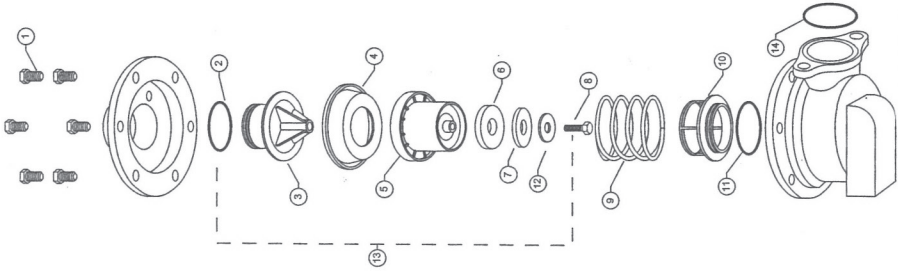
◇ Rated Flow (Established by approval agencies)

**MODEL 375AST**  
(2 1/2" - 10")



| ITEM NO. | DESCRIPTION              |
|----------|--------------------------|
| 1        | GATE VALVE, NRS          |
|          | GATE VALVE, OS&Y         |
|          | BUTTERFLY VALVE          |
| 2        | NIPPLE                   |
| 3        | O-RING, CONTROL UNIT     |
| 4        | RELIEF VALVE ASSY        |
| 5        | BOLT, RELIEF VALVE       |
| 6        | SEAT RETAINER #2         |
| 7        | SEAT RETAINER #1         |
| 8        | COVER                    |
| 9        | COVER RETAINER ASSY      |
| 10       | BALL VALVE               |
| 11       | NIPPLE, LONG             |
| 12       | PLUG                     |
| 13       | O-RING                   |
| 14       | BOLT, POPPET RETAINER    |
| 15       | HANDLE, #1 POPPET ASSY   |
| 16       | WASHER                   |
| 17       | O-RING                   |
| 18       | POPPET RETAINER          |
| 19       | SEAL RING                |
| 20       | SEAT ASSEMBLY, #1 POPPET |
| 21       | SEAT ASSEMBLY, #2 POPPET |
| 22       | #1 CHECK ASSEMBLY        |
| 23       | #2 CHECK ASSEMBLY        |
| 24       | SENSING TUBE FITTING     |
| 25       | SENSING TUBE             |
| 26       | BALL VALVE               |
| 27       | GASKET, COVER RETAINER   |
| 28       | WASHER                   |
| 29       | NUT                      |
| 30       | GROOVED COUPLING         |
| 31       | COUPLING GASKET          |

**Relief Valve 2 1/2" to 10"**



| ITEM NO. | DESCRIPTION   |
|----------|---------------|
| 1        | BOLT, COVER   |
| 2        | O-RING        |
| 3        | UPPER PLUNGER |
| 4        | DIAPHRAGM     |
| 5        | LOWER PLUNGER |
| 6        | SEAL RING     |
| 7        | SEAL RETAINER |
| 8        | SCREW         |
| 9        | CU SPRING     |
| 10       | CU SEAT       |
| 11       | O-RING        |
| 12       | WASHER        |
| 13       | STEM ASSY.    |
| 14       | O-RING        |