

# WILKINS 475 STDA / STDAV / STDAR / STDARV

## SIZE

4", 6", 8", 10"

## DESCRIPTION

This is a reduced pressure detector assembly. The mainline valve is similar to the Model 475ST. The by-pass assembly is a model similar to the 975XLD. Production began in 2018. The body is stainless steel and configured in an angle pattern. The normal installation orientation in the ST models allows water to come up from the bottom and then goes through two 90 degree turns then goes into a downward flow. This is commonly called a N pattern installation. The STV model allows for a vertical orientation. This can happen when the downside 2<sup>nd</sup> check body is rotated 180 degrees. This allows the flow of water to come up from the inlet check and then rotate the outlet so it goes into an upward flow. The STR model has a spool placed between the two check bodies making an adjustable center to center dimension. This allows for a retrofit installation. The rubber repair parts are the same in all 475STDA versions.

## BASIC REPAIR KIT

Mainline repair kit contains discs diaphragm and O'rings

<u>Size</u>	<u>Kit No</u>
4"	375400 *
6"	375600 *
8-10"	375800 *

Bypass repair kit contains disc, diaphragm, & O'rings

<u>Size</u>	<u>Kit No</u>
3/4"	RK34-975XLR

## IMPORTANT FEATURES

*~Stainless Steel N-Shape Body*

*~The STR model has a spool making an adjustable center to center dimension*

*~Checks are Noryl plastic and modular in construction*



### By-Pass Backflow Assembly 3/4" Model 975XLDTCU

#### Materials

Main valve body	304L Stainless steel
Access covers	304L Stainless steel
Internals Stainless steel,	300 Series
	NORYL™, NSF Listed
Fasteners & Springs	Stainless Steel, 300 Series
Elastomers	EPDM (FDA approved)
	Buna Nitrile (FDA approved)
Polymers	NORYL™, NSF Listed
Sensing line	Stainless steel, braided hose

#### Features

Sizes: 4", 6", 8", 10"	
Maximum working water pressure	175 psi
Minimum working water pressure	25 psi
Maximum working water temperature	140° F
Minimum working water temperature	33° F
Hydrostatic test pressure	350 psi
End connections	
(Grooved for steel pipe)	AWWA C606
(Flanged)	ANSI B16.1
	Class 125



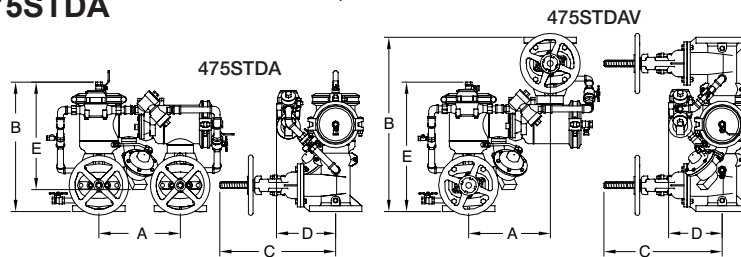
LEAD FREE



NSF/ANSI 61

### Dimensions & Weights (do not include pkg.) 475STDA

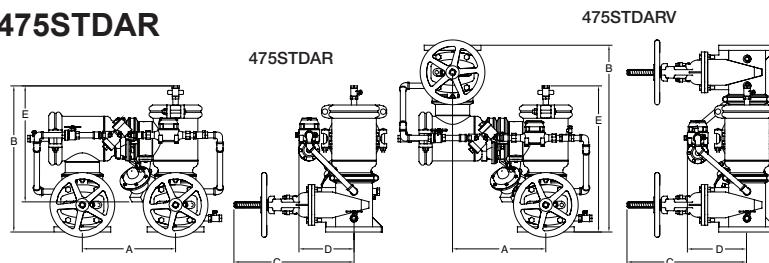
SIZE	WEIGHT							
	WITH OS&Y GATES (GXF)		WITH OS&Y GATES (GXG)		WITH BFLY VALVES (GXF)		WITH BFLY VALVES (GXG)	
	lbs.	kg	lbs.	kg	lbs.	kg	lbs.	kg
4"	276	125	236	107	166	75	143	65
6"	412	187	382	173	232	105	201	91
8"	706	320	666	302	440	200	394	179
10"	924	419	872	395	549	249	491	223



SIZE	DIMENSION (approximate)																		
	A		B WITH GATE VALVES		B WITH BUTTERFLY VALVES		C OS&Y OPEN		C OS&Y CLOSED		C WITH BUTTERFLY VALVES		D		E		E WITH BUTTERFLY VALVES		
	in.	mm	in.	mm	in.	mm	in.	mm	in.	mm	in.	mm	in.	mm	in.	mm	in.	mm	
4" 475STDA	100	14	356	22 1/4	565	19 7/8	505	22 1/2	572	9	229	9	229	10 1/8	257	18 3/8	467	18 3/8	467
4" 475STDAV	100	14	356	29 7/8	760	25 1/8	638	22 1/2	572	9	229	9	229	10 1/8	257	22 1/4	565	19 7/8	505
6" 475STDA	150	16	406	27 7/8	708	24 3/4	630	30 1/2	775	10 1/2	267	10 1/4	260	10 5/8	270	22 3/8	570	22 3/8	570
6" 475STDAV	150	16	406	36 1/4	921	29 1/8	740	30 1/2	775	10 1/2	267	10 1/4	260	10 5/8	270	27 7/8	708	24 3/4	630
8" 475STDA	200	18 1/2	470	34 7/8	886	29 1/8	740	37	940	12	305	12	305	12 7/8	327	30 5/8	780	30 5/8	780
8" 475STDAV	200	18 1/2	470	40 1/4	1022	51 1/4	1302	37	940	12	305	12	305	12 7/8	327	34 7/8	886	29 1/8	740
10" 475STDA	250	21	533	38 3/4	984	35 3/4	910	45 5/8	1159	12	305	13	330	12 7/8	327	32 3/4	832	32 3/4	832
10" 475STDAV	250	21	533	45 7/8	1165	59 7/8	1521	45 5/8	1159	12	305	13	330	12 7/8	327	38 3/4	984	35 3/4	908

### Dimensions & Weights (do not include pkg.) 475STDAR

SIZE	WITH OS&Y GATES (GXF)		WITH OS&Y GATES (GXG)		WITH BFLY VALVES (GXF)		WITH BFLY VALVES (GXG)	
	lbs.	kg	lbs.	kg	lbs.	kg	lbs.	kg
	4"	279	127	239	108	169	77	146
6"	415	188	385	175	235	107	204	93
8"	720	327	680	308	454	206	408	185
10"	942	427	890	404	567	257	509	231

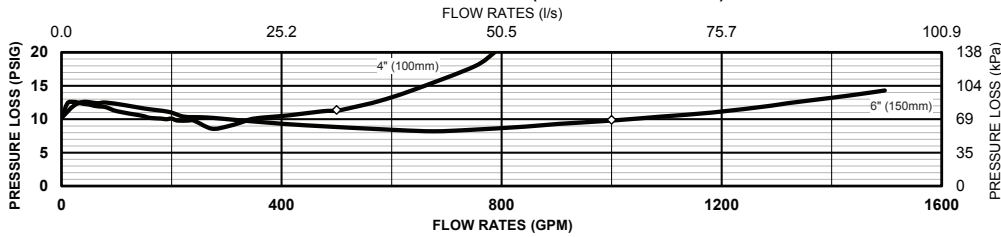


SIZE	DIMENSION (approximate)																		
	A		B WITH GATE VALVES		B WITH BUTTERFLY VALVES		C OS&Y OPEN		C OS&Y CLOSED		C WITH BUTTERFLY VALVES		D		E		E WITH BUTTERFLY VALVES		
	in.	mm	in.	mm	in.	mm	in.	mm	in.	mm	in.	mm	in.	mm	in.	mm	in.	mm	
4" 475STDAR	100	18 5/16	465	22 1/4	565	19 7/8	505	22 1/2	572	9	229	9	229	10 1/8	257	18 3/8	467	18 3/8	467
4" 475STDARV	100	18 5/16	465	29 7/8	760	25 1/8	638	22 1/2	572	9	229	9	229	10 1/8	257	22 1/4	565	19 7/8	505
6" 475STDAR	150	18 11/16	475	27 7/8	708	24 3/4	630	30 1/2	775	10 1/2	267	10 1/4	260	10 5/8	270	22 3/8	570	22 3/8	570
6" 475STDARV	150	18 11/16	475	36 1/4	921	29 1/8	740	30 1/2	775	10 1/2	267	10 1/4	260	10 5/8	270	27 7/8	708	24 3/4	630
8" 475STDAR	200	29	737	34 7/8	886	29 1/8	740	37	940	12	305	12	305	12 7/8	327	30 5/8	780	30 5/8	780
8" 475STDARV	200	29	737	40 1/4	1022	51 1/4	1302	37	940	12	305	12	305	12 7/8	327	34 7/8	886	29 1/8	740
10" 475STDAR	250	29	737	38 3/4	984	35 3/4	910	45 5/8	1159	12	305	13	330	12 7/8	327	32 3/4	832	32 3/4	832
10" 475STDARV	250	29	737	45 7/8	1165	59 7/8	1521	45 5/8	1159	12	305	13	330	12 7/8	327	38 3/4	984	35 3/4	908

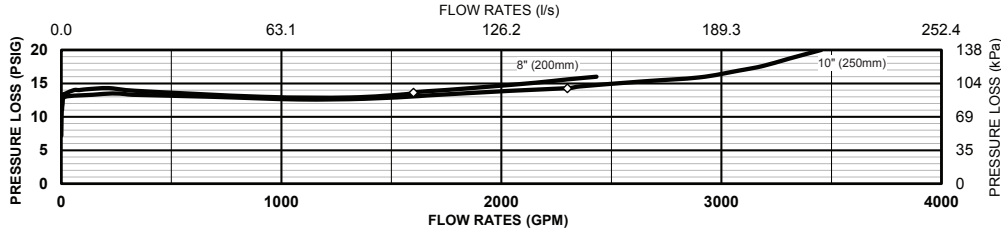
**Flow Characteristics**

◇ Rated Flow (established by approval agencies)

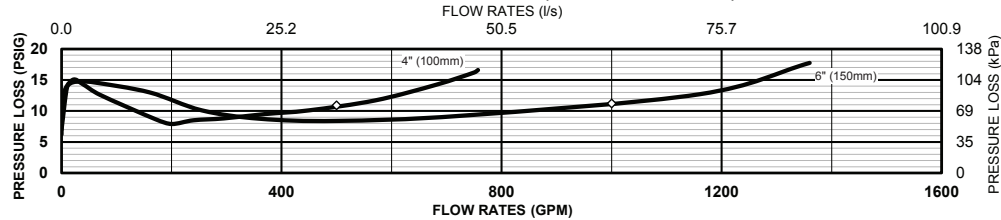
**475STDA & 475STDAV 4" & 6" (STANDARD & METRIC)**



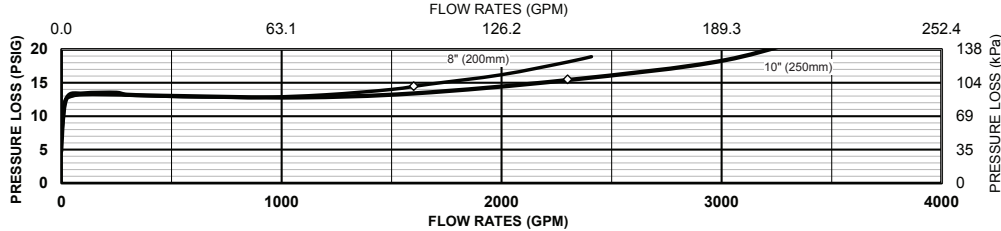
**475STDA & 475STDAV 8" & 10" (STANDARD & METRIC)**



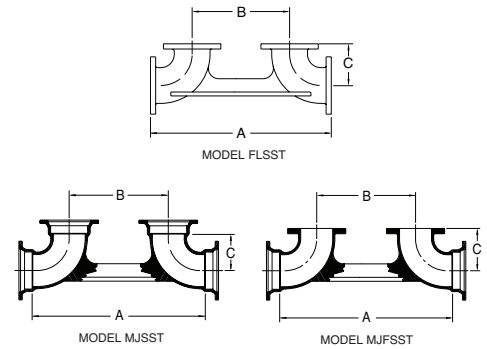
**475STDA R & 475STDARV 4" & 6" (STANDARD & METRIC)**



**475STDAR & 475STDARV 8" & 10" (STANDARD & METRIC)**



**Valve Setters**



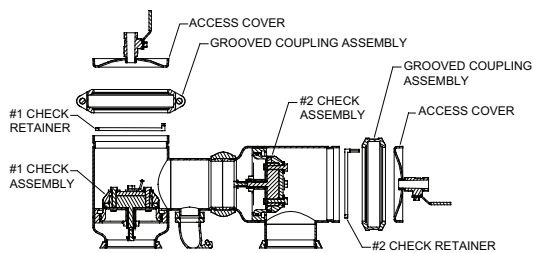
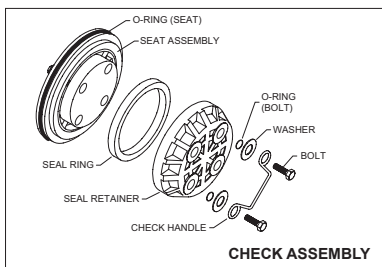
**Dimensions & Weights (do not include pkg.)**

MODEL	FOR MODEL	DIMENSIONS (approximate)						WEIGHT	
		A		B		C		lbs.	kg
4-FLSST	4" 400ST	27	690	14	356	6 1/2	165	76	34
4-MJFSST	4" 400ST	25	635	14	356	6 1/2	165	84	38
4-MJSST	4" 400ST	25	635	14	356	7 7/8	200	90	41
6-FLSST	6" 400ST	32 1/16	814	16	406	8	203	129	59
6-MJFSST	6" 400ST	30 1/16	764	16	406	8	203	135	61
6-MJSST	6" 400ST	30 1/16	764	16	406	7 1/16	179	140	64
8-FLSST	8" 400ST	36 1/2	927	18 1/2	470	9	229	195	88
8-MJFSST	8" 400ST	34 1/8	867	18 1/2	470	9	229	186	84
8-MJSST	8" 400ST	34 1/8	867	18 1/2	470	7 13/16	198	165	75
10-FLSST	10" 400ST	43	1092	21	533	11	279	248	112
10-MJFSST	10" 400ST	39	991	21	533	11	279	227	103
10-MJSST	10" 400ST	39	991	21	533	9	229	197	89

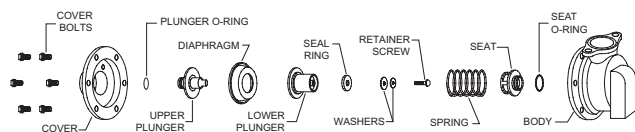
**Specifications**

The mechanical joint by flange and mechanical joint by mechanical joint valve setter shall meet AWWA C153-88 and the flange by flange valve setter shall meet ANSI B16.1. The assembly shall be FDA Approved fusion epoxy coated ductile iron (ASTM A536 Grade 4). The setter shall be a ZURN WILKINS Model FLSSST, MJFSST or MJSST.

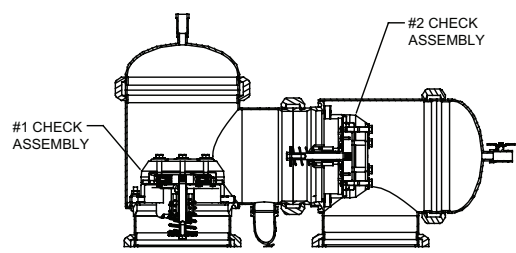
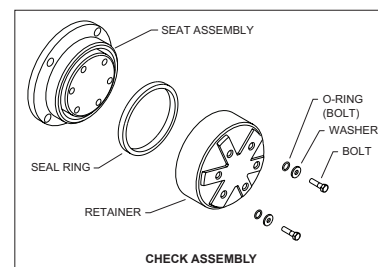
**4" - 6"**



**RELIEF VALVE ASSEMBLY**



**8" - 10"**



**RELIEF VALVE ASSEMBLY**

