

WILKINS 550

WILKINS 550A

SIZE

3/4", 1", 1 1/4", 1 1/2", 2", 2 1/2", 3", 4", 6"

DESCRIPTION

This is a double check assembly. Production began approximately 1975 under the Richwell Model DC name. Around 1978 it was sold to the Neptune Meter Co. who produced it until 1984 as the 550. It was sold to the Wilkins Regulator Co. in 1984 and produced until 1995. The 3/4"-2" size are of bronze body construction. The check seats are cast into the body and are not replaceable. The original design of this unit had the check disc holders made of bronze. Approximately 1985 the disc holders were changed to glass filled noryl. In the 3/4"-1" size, there were several versions of the check covers produced. They could be either plastic or bronze. They could also be bolted on or screwed on. The 2 1/2"-6" body is cast iron with a fused epoxy coating to inhibit rust. Check seats are replaceable. In all sizes the checks are a piston type. Check springs are not contained when the cover is removed on the 3/4"-3" size. The 4"-6" size do have contained check springs when the cover is removed.

BASIC REPAIR KIT

The repair kit contains all rubber discs, O-rings, and washers.

<u>SIZE</u>	<u>KIT NO</u>
3/4"-1"	RK34-550R
1 1/4"-2"	RK114-550R
2 1/2"-3"	RK212-550R
4"	RK4-550R
6"	RK6-550R

IMPORTANT FEATURES

3/4"-2" SIZES

~Bronze body

~Springs are not contained

~Seats are not replaceable

~Factory repair information enclosed

2 1/2"-6" SIZES

~ Fused epoxy coated cast iron body

~2 1/2"-3" springs are not contained

~Replaceable seats

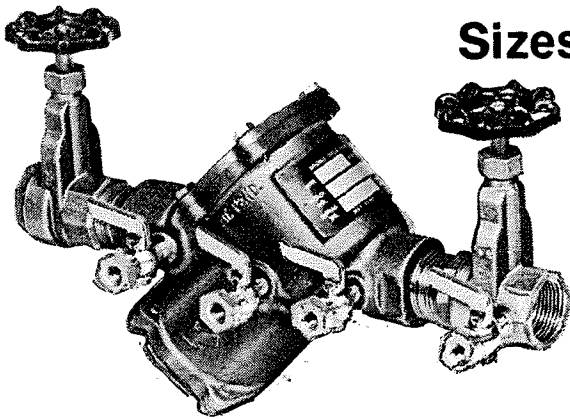


WILKINS

MODEL 550

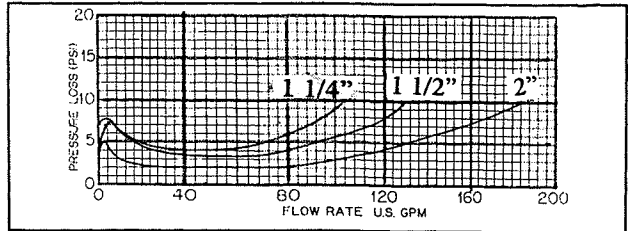
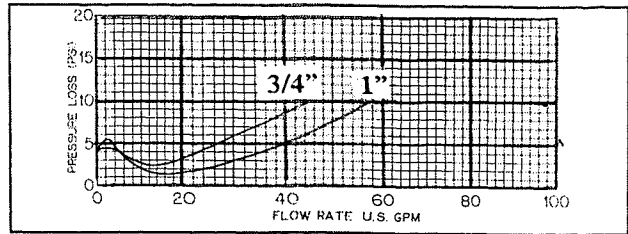
DOUBLE CHECK VALVE ASSEMBLY

Sizes 3/4" — 2"

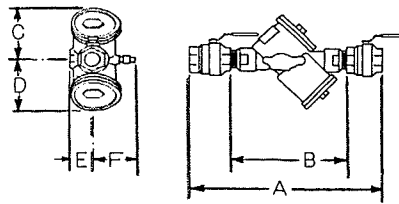


MATERIALS

- All corrosion resistant
- Cast bronze maincase
- Stainless steel springs
- Rubber check valve discs
- Stainless steel bolts



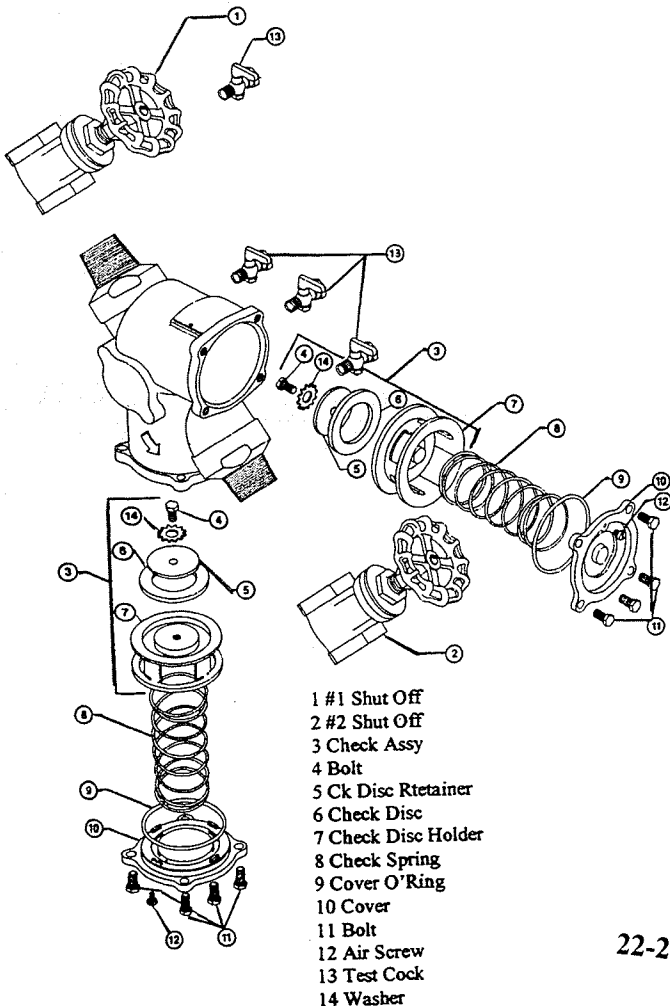
DIMENSIONS & WEIGHTS



MODEL SIZE	DIMENSIONS (INCHES)								WEIGHT (LBS)			
	A Ball Valves	A Gate Valves	A Double Union Ball Valves	B Less Stop Valves	C	D	E	F	Less Stop Valves	With Gates	With Ball Valves	Double Union w/ Ball Valves
3/4	13.75	12.25	15.12	8.5	3.25	3.5	2	3	7.92	9.42	9.42	12.44
1	14.75	12.75	16.12	8.5	3.25	3.5	2	3	7.92	10.42	10.42	13.63
1 1/4	19.25	16.75	N/A	12	5	4.7	2.3	3.5	14.7	18.7	18.2	N/A
1 1/2	19.75	16.75	21.25	12	5	4.7	2.3	3.5	14.7	18.2	21.2	21.34
2	21	16.75	22.25	12	5	4.7	2.3	3.5	14.7	21.2	25.7	25.9

PRESSURE-TEMPERATURE

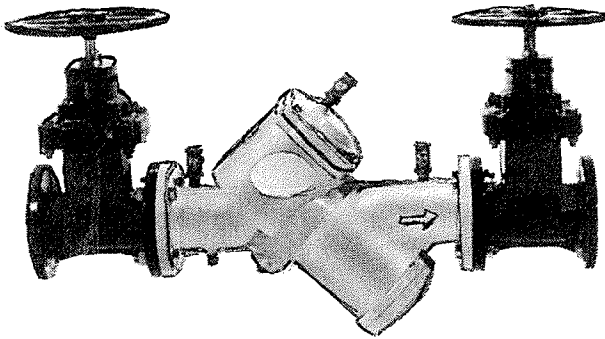
Suitable for supply pressure up to 150 PSI and water temperatures from 33°F to 140°F.



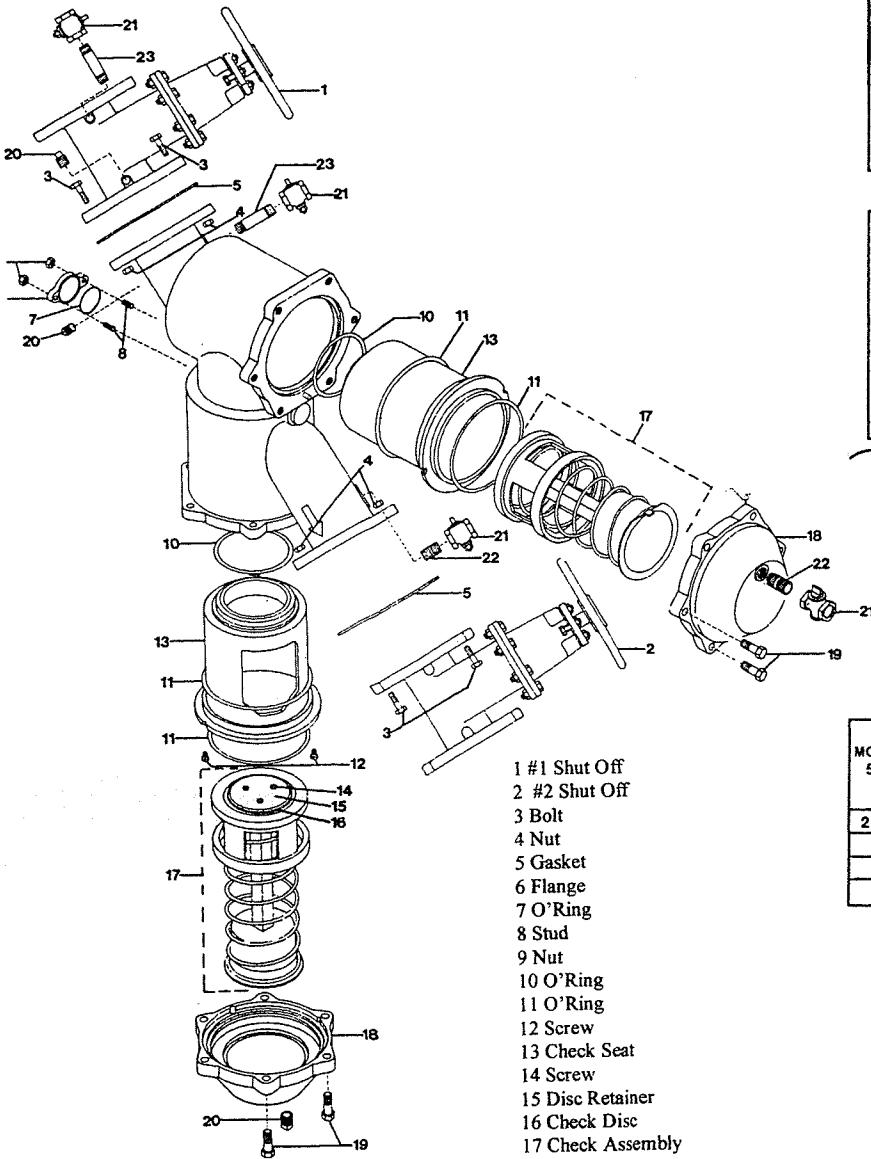
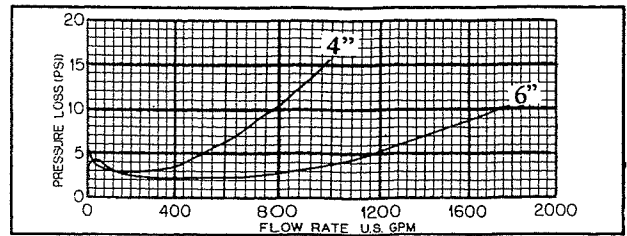
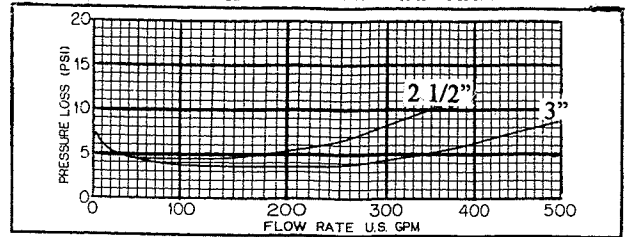
- 1 #1 Shut Off
- 2 #2 Shut Off
- 3 Check Assy
- 4 Bolt
- 5 Ck Disc Rrtainer
- 6 Check Disc
- 7 Check Disc Holder
- 8 Check Spring
- 9 Cover O'Ring
- 10 Cover
- 11 Bolt
- 12 Air Screw
- 13 Test Cock
- 14 Washer

WILKINS

MODEL 550 Double Check Valve Assembly Backflow Preventers Sizes 2 1/2", 3", 4", & 6"

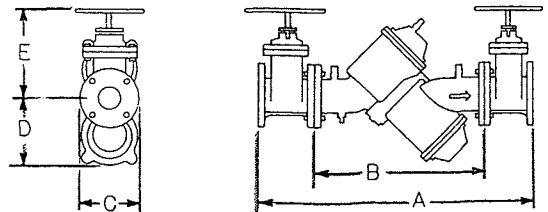


FLOW CHARACTERISTICS



- 1 #1 Shut Off
- 2 #2 Shut Off
- 3 Bolt
- 4 Nut
- 5 Gasket
- 6 Flange
- 7 O'Ring
- 8 Stud
- 9 Nut
- 10 O'Ring
- 11 O'Ring
- 12 Screw
- 13 Check Seat
- 14 Screw
- 15 Disc Retainer
- 16 Check Disc
- 17 Check Assembly
- 18 Cover
- 19 Bolt
- 20 Plug
- 21 Test Cock
- 22 Nipple
- 23 Nipple

DIMENSIONS & WEIGHTS



MODEL 550	DIMENSIONS (INCHES)					NRS	OS & Y		WEIGHT (LBS)	
	A	B	C	D	E		OPER	CLOSED	NRS	OS & Y
2 1/2	35	20	7.5	7.75	9.25	14	11.75	153.2	229.4	93
3	36	20	7.5	7.75	10.25	23.5	18	176.6	242.6	93
4	46	28	9	10.5	12.5	23.5	19	351.6	453.8	225
6	57	36	11	15	16.75	30	24	780.6	939	565

MATERIALS

All corrosion resistant
Epoxy coated (FDA Approved) maincase
inside and outside
Brass poppet type check valves-
unitized spring assembly, independently
operated, stainless steel springs
One piece brass sleeve and seat-
easy to remove

PRESSURE-TEMPERATURE

Suitable for supply pressure up to 150 PSI and
water temperatures from 33°F to 110°F.