

# WILKINS

## 950/ 950 A/ 950 XL950XL2

## 950 XLT/ 950XLT2

### SIZE

3/4", 1", 1 1/4", 1 1/2", 2", 2 1/2", 3", 4", 6", 8", 10"

### DESCRIPTION

This is a double check assembly. Production began in 1990. The 2 1/2"-10" sizes were discontinued in 2004. The 3/4"-2" size is a wye pattern glass filled noryl poppet style wye pattern check. The body is made of bronze. In 2010 the 950XL2 was introduced and made of lead free bronze. The rubber kit fits both versions. The check springs are not contained when the screw on cover cap is removed. There were three versions of check seats produced. The 950 version has a non-replaceable check seat. The model 950A had a replaceable bronze seat. The model 950 XL had a replaceable seat made of glass filled noryl. A seat removal tool was needed to change the seats. The check discs in the 950 XL were changed to silicon rubber. In 1997 a top entry model was created and called model 950 XLT. Another model, the 950 XLV, was created with union ends and 90 degree elbows on each end. The 2 1/2"-10" utilizes a fusion epoxy coated cast iron body. The check seats are replaceable and the spring is contained when the bolted cover is removed. The internal hardware parts are mostly bronze.

### BASIC REPAIR KIT

Repair kit contains all rubber discs and O-rings

| <u>SIZE</u> | <u>KIT NO 950 &amp; 950A</u> | <u>950XL/2 &amp; 950XLT/2</u> |
|-------------|------------------------------|-------------------------------|
| 3/4"-1"     | RK34-950R                    | RK34-950XLR                   |
| 1 1/4"-2"   | RK114-950R                   | RK114-950XLR                  |
| 2 1/2"-3"   | RK212-950                    |                               |
| 4"          | RK4-950                      |                               |
| 6"          | RK6-950                      |                               |
| 8"          | RK8-950                      |                               |
| 10"         | RK10-950                     |                               |

### IMPORTANT FEATURES

#### 3/4"-2" SIZE

~Bronze body  
 ~Springs are not contained  
 ~Replaceable seat option available  
 ~Factory repair information enclosed

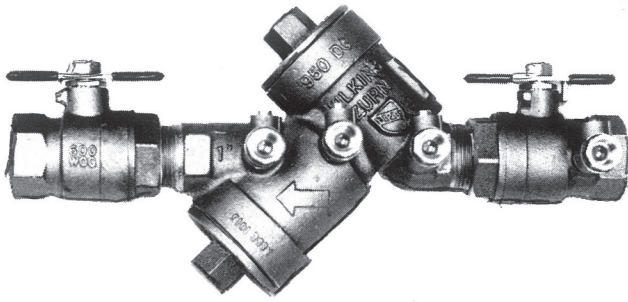
#### 2 1/2"-10" SIZE

~Fused epoxy coated cast iron body  
 ~Springs are contained  
 ~Seats are replaceable  
 ~Factory repair information enclosed



# Model 950XL Double Check Valve Assembly

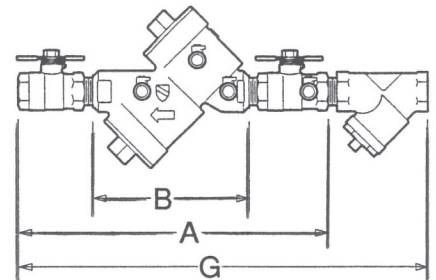
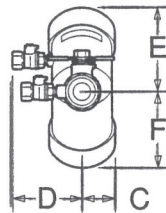
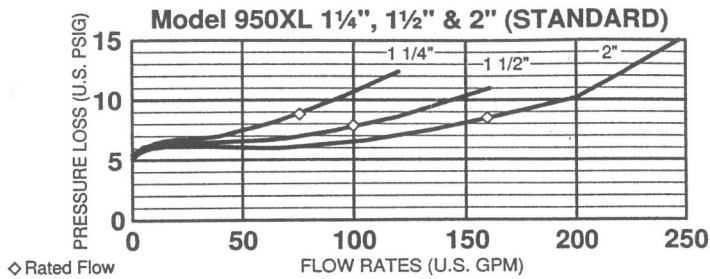
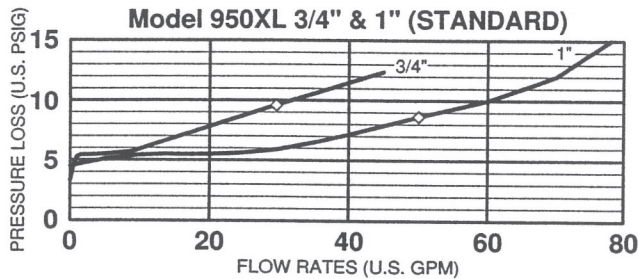
Sizes:  $\square \frac{3}{4}"$   $\square 1"$   $\square 1\frac{1}{4}"$   $\square 1\frac{1}{2}"$   $\square 2"$



## MATERIALS

Main valve body — Cast Bronze ASTM B584  
Access covers — Cast Bronze ASTM B584  
Internals — Stainless Steel, 300 Series  
Elastomers — Silicone (FDA approved)  
Buna Nitrile (FDA approved)  
Polymers — Noryl™, NSF Listed  
Springs — Stainless steel, 300 series

Maximum working water pressure — 175 PSI  
Maximum working water temperature — 180°F  
Hydrostatic test pressure — 350 PSI  
End connections — Threaded ANSI B1.20.1



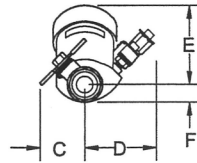
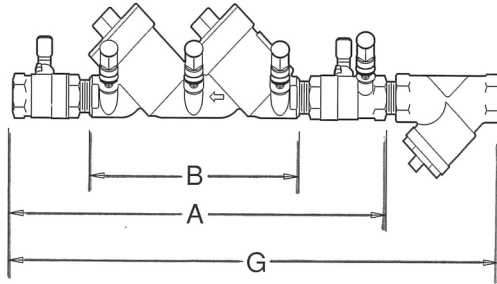
## DIMENSIONS & WEIGHTS

| MODEL SIZE |    | DIMENSIONS (approximate) |     |              |     |             |     |       |    |       |    |       |     |       |     |        |     | WEIGHT    |     |           |      |
|------------|----|--------------------------|-----|--------------|-----|-------------|-----|-------|----|-------|----|-------|-----|-------|-----|--------|-----|-----------|-----|-----------|------|
|            |    | A                        |     | A UNION BALL |     | B LESS BALL |     | C     |    | D     |    | E     |     | F     |     | G      |     | LESS BALL |     | WITH BALL |      |
|            |    | in.                      | mm  | in.          | mm  | in.         | mm  | in.   | mm | in.   | mm | in.   | mm  | in.   | mm  | in.    | mm  | lbs.      | kg  | lbs.      | kg   |
| 3/4        | 20 | 11 1/4                   | 286 | 12 1/2       | 318 | 7           | 178 | 1 1/2 | 38 | 3     | 76 | 3 1/2 | 89  | 3     | 76  | 15     | 381 | 5         | 2.3 | 7         | 3.2  |
| 1          | 25 | 12 1/4                   | 311 | 13 7/8       | 353 | 7           | 178 | 1 1/2 | 38 | 3     | 76 | 3 1/2 | 89  | 3     | 76  | 17 3/4 | 451 | 8         | 3.6 | 12        | 5.4  |
| 1 1/4      | 32 | 15 1/2                   | 419 | 18 1/2       | 470 | 10 9/16     | 268 | 2     | 51 | 3 1/2 | 89 | 4 1/2 | 114 | 4 1/2 | 114 | 21 1/2 | 546 | 16        | 7.3 | 22        | 10   |
| 1 1/2      | 40 | 17 1/8                   | 435 | 19 1/8       | 486 | 10 9/16     | 268 | 2     | 51 | 3 1/2 | 89 | 4 1/2 | 114 | 4 1/2 | 114 | 22 3/4 | 578 | 16        | 7.3 | 22        | 10   |
| 2          | 50 | 18 1/4                   | 460 | 20           | 508 | 10 9/16     | 268 | 2     | 51 | 3 1/2 | 89 | 4 1/2 | 114 | 4 1/2 | 114 | 25 1/8 | 638 | 16        | 7.3 | 28        | 12.7 |

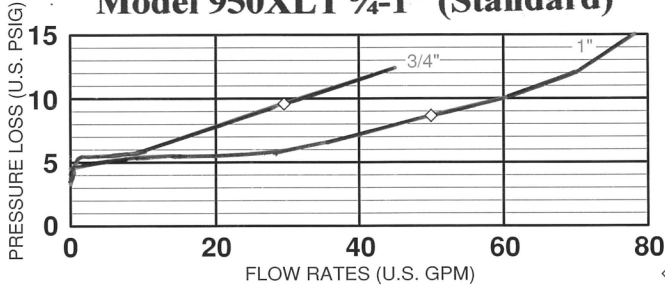
# MODEL 950XLT

**DIMENSIONS & WEIGHTS (do not include pkg.)**

| MODEL SIZE |    | DIMENSIONS (approximate) |     |              |     |             |     |         |     |        |    |        |     |        |    |          |     | WEIGHT    |     |           |      |
|------------|----|--------------------------|-----|--------------|-----|-------------|-----|---------|-----|--------|----|--------|-----|--------|----|----------|-----|-----------|-----|-----------|------|
|            |    | A                        |     | A UNION BALL |     | B LESS BALL |     | C       |     | D      |    | E      |     | F      |    | G        |     | LESS BALL |     | WITH BALL |      |
|            |    | in.                      | mm  | in.          | mm  | in.         | mm  | in.     | mm  | in.    | mm | in.    | mm  | in.    | mm | in.      | mm  | lbs.      | kg  | lbs.      | kg   |
| 3/4        | 20 | 13                       | 330 | 14 5/16      | 364 | 8 3/4       | 222 | 2 3/8   | 60  | 2 5/16 | 59 | 3 5/16 | 84  | 3/4    | 19 | 17 5/8   | 448 | 4         | 1.8 | 6         | 2.7  |
| 1          | 25 | 14                       | 356 | 15 3/4       | 400 | 8 3/4       | 222 | 2 1/2   | 64  | 2 5/16 | 59 | 3 5/16 | 84  | 3/4    | 19 | 19 3/4   | 502 | 8         | 3.6 | 12        | 5.4  |
| 1 1/4      | 32 | 19 5/8                   | 499 | 21 5/8       | 549 | 13 3/4      | 349 | 4       | 102 | 3 5/8  | 92 | 4 3/8  | 111 | 1 5/16 | 33 | 24 3/4   | 629 | 16        | 7.3 | 22        | 10   |
| 1 1/2      | 40 | 20 5/16                  | 516 | 22 5/16      | 567 | 13 3/4      | 349 | 5 3/8   | 137 | 3 5/8  | 92 | 4 3/8  | 111 | 1 5/16 | 33 | 25 15/16 | 659 | 16        | 7.3 | 22        | 10   |
| 2          | 50 | 21 3/8                   | 543 | 23 1/4       | 591 | 13 3/4      | 349 | 5 13/16 | 148 | 3 5/8  | 92 | 4 3/8  | 111 | 1 5/16 | 33 | 28 5/16  | 719 | 17        | 7.7 | 29        | 13.2 |

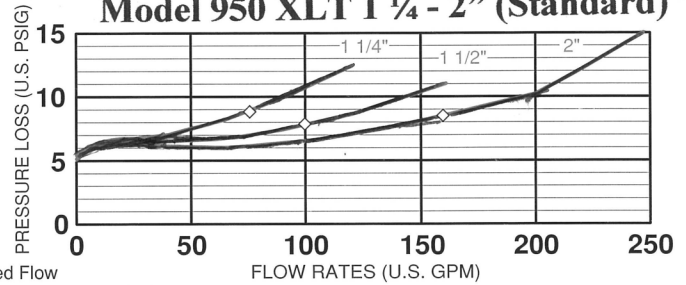


**Model 950XLT 3/4-1" (Standard)**

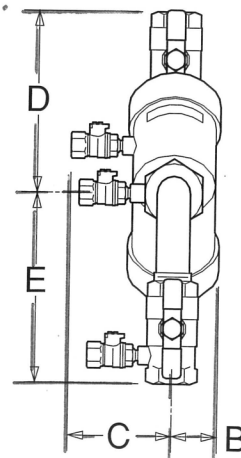
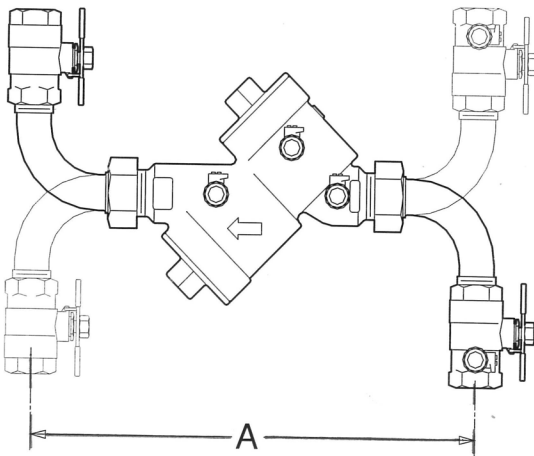


◇ Rated Flow  
(Established by approval agencies)

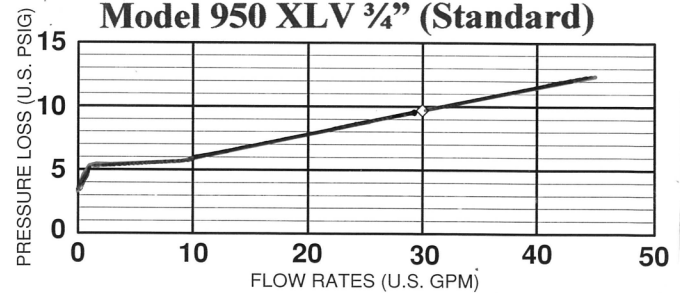
**Model 950 XLT 1 1/4 - 2" (Standard)**



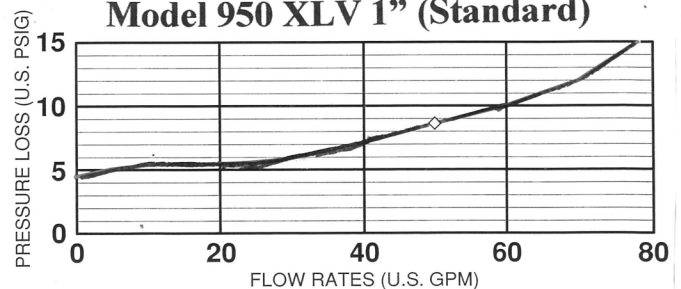
# MODEL 950XLV



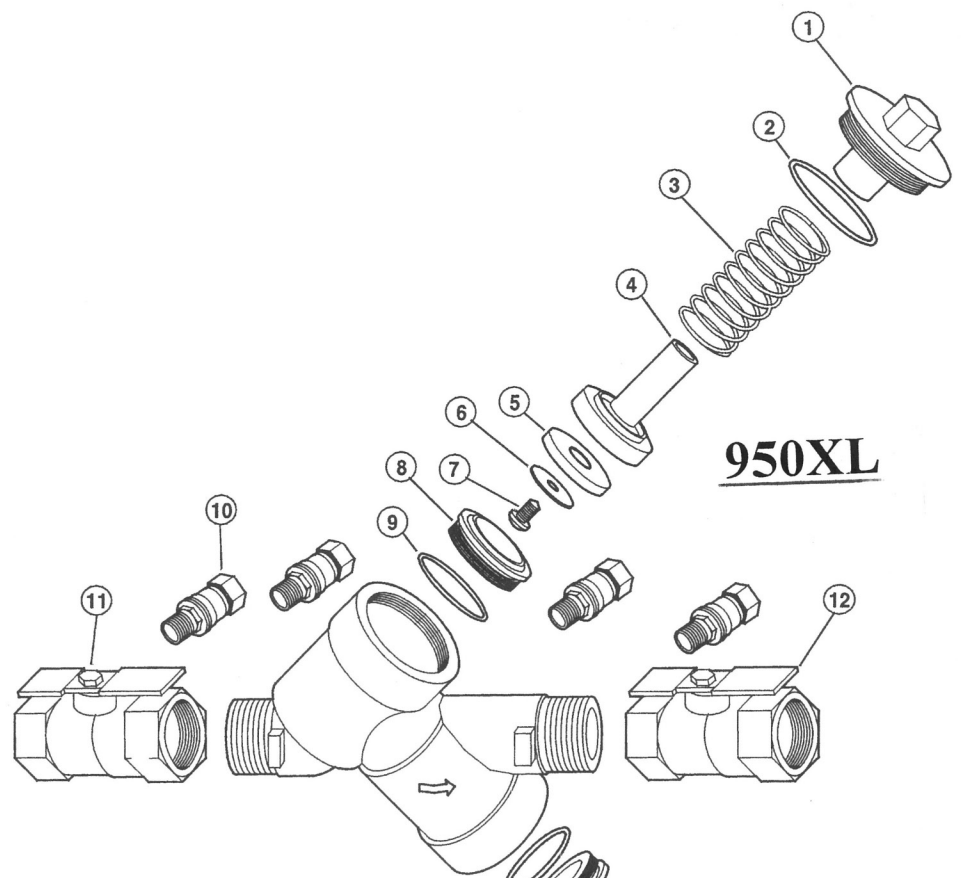
**Model 950 XLV 3/4" (Standard)**



**Model 950 XLV 1" (Standard)**

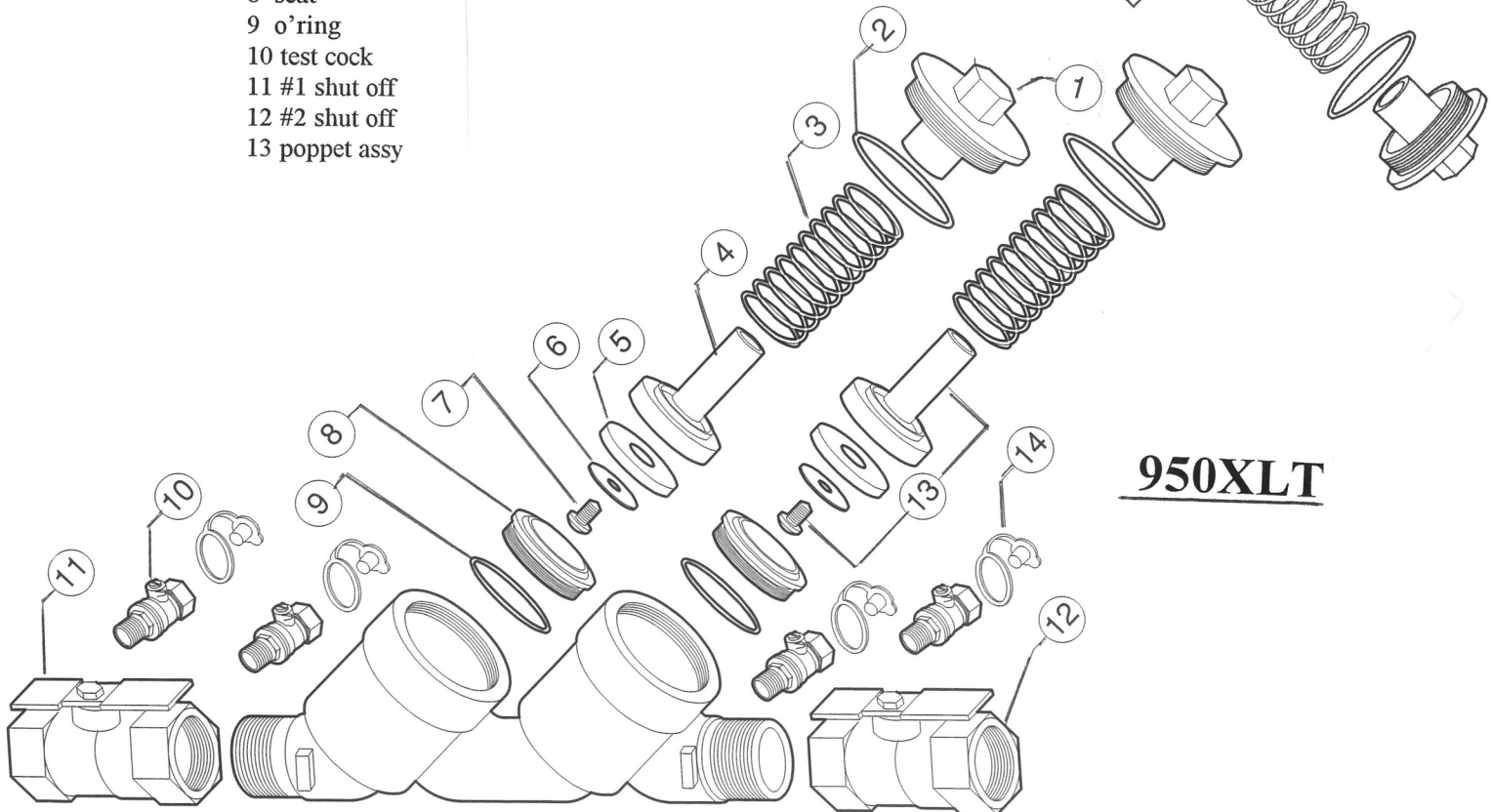


| MODEL SIZE | DIMENSIONS (INCHES) |      |      |      |      | WEIGHT (LBS) |
|------------|---------------------|------|------|------|------|--------------|
|            | A                   | B    | C    | D    | E    |              |
| 3/4"       | 11.50               | 2.10 | 3.00 | 4.75 | 5.00 | 11.00        |
| 1"         | 11.50               | 2.10 | 3.00 | 5.00 | 5.25 | 12.00        |



## 950XL

- 1 cover
- 2 o'ring
- 3 spring
- 4 disc holder
- 5 disc
- 6 disc retainer
- 7 disc ret screw
- 8 seat
- 9 o'ring
- 10 test cock
- 11 #1 shut off
- 12 #2 shut off
- 13 poppet assy



## 950XLT



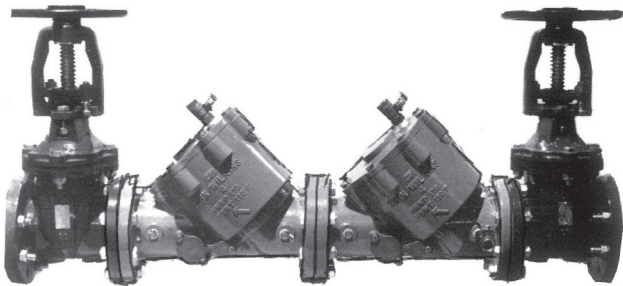
# MODEL 950

Double Check Valve Assembly  
Backflow Preventers  
Sizes 2 1/2" to 10"

# WILKINS



a step ahead of tomorrow



• Shown with optional OS&Y Gate Valves

## MATERIALS

Main valve body — Cast Iron ASTM A126 Class B  
Access covers — Cast Iron ASTM A126 Class B  
Coatings — FDA Approved Epoxy finish  
Internals — Stainless Steel, 300 Series  
Cast Bronze ASTM B584  
Elastomers — EPDM (FDA approved)  
Buna Nitrile (FDA approved)  
Polymers — Delrin™, NSF Listed  
Springs — Stainless steel, 300 series

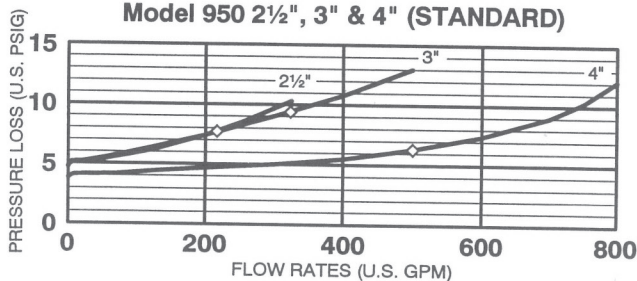
## FEATURES

Sizes: □ 2 1/2" □ 3" □ 4" □ 6" □ 8" □ 10"

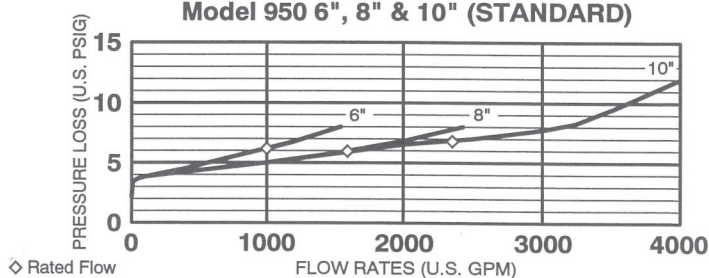
Maximum working water pressure — 175 PSI  
Maximum working water temperature — 140°F  
Hydrostatic test pressure — 350 PSI  
End connections — Flanged ANSI  
B16.1 Class 125

## FLOW CHARACTERISTICS

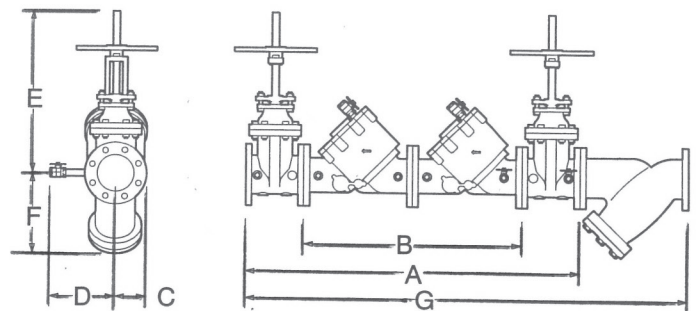
Model 950 2 1/2", 3" & 4" (STANDARD)



Model 950 6", 8" & 10" (STANDARD)



## DIMENSIONS & WEIGHTS



| SIZE   | DIMENSIONS (inches) |                             |      |       |                                      |  |                                |       |        | WEIGHT (lbs.)             |   |  |
|--------|---------------------|-----------------------------|------|-------|--------------------------------------|--|--------------------------------|-------|--------|---------------------------|---|--|
|        | A                   | B<br>WITHOUT<br>GATE VALVES | C    | D     | OS&Y <sup>E</sup> GATE<br>VALVE OPEN | OS&Y <sup>E</sup> GATE<br>VALVE CLOSED | NRS <sup>E</sup> GATE<br>VALVE | F     | G      | WITHOUT<br>GATE<br>VALVES | WITH NRS <sup>E</sup><br>GATE<br>VALVES | WITH OS&Y <sup>E</sup><br>GATE<br>VALVES |
| 2 1/2" | 37.12               | 22.00                       | 4.00 | 8.00  | 16.00                                | 14.00                                  | 13.00                          | 8.38  | 47.10  | 153                       | 261                                     | 253                                      |
| 3"     | 38.12               | 22.00                       | 4.00 | 8.00  | 20.00                                | 16.00                                  | 13.00                          | 9.25  | 48.75  | 153                       | 277                                     | 263                                      |
| 4"     | 50.28               | 32.12                       | 5.00 | 8.00  | 23.00                                | 19.00                                  | 15.00                          | 12.50 | 65.25  | 371                       | 537                                     | 541                                      |
| 6"     | 62.00               | 41.00                       | 6.00 | 10.00 | 31.00                                | 25.00                                  | 19.00                          | 14.00 | 80.12  | 604                       | 866                                     | 882                                      |
| 8"     | 71.12               | 48.00                       | 7.50 | 11.00 | 39.00                                | 30.00                                  | 24.00                          | 17.75 | 95.37  | 1159                      | 1569                                    | 1587                                     |
| 10"    | 84.12               | 58.00                       | 9.00 | 12.00 | 46.00                                | 36.00                                  | 27.00                          | 21.25 | 113.80 | 1487                      | 2199                                    | 2179                                     |

# 950 2 1/2-10"

| ITEM NO. | DESCRIPTION        |
|----------|--------------------|
| 1        | GATE VALVE, NRS    |
|          | GATE VALVE, OS&Y   |
| 2        | BOLT, FLANGE       |
| 3        | NUT, FLANGE        |
| 4        | GASKET, FLANGE     |
| 5        | STUD, FLANGE       |
| 6        | O-RING, SMALL      |
| 7        | O-RING, LARGE      |
| 8        | COVER PLATE        |
| 9        | BOLT, COVER PLATE  |
| 10       | COVER              |
| 11       | O-RING, COVER      |
| 12       | BOLT, COVER        |
| 13       | NIPPLE, SHORT      |
| 14       | BALL VALVE, MALE   |
|          | BALL VALVE, FEMALE |
| 15       | O-RING, SEAT       |
| 16       | SEAT               |
| 17       | BOLT, SEAT         |
| 18       | LOWER STEM GUIDE   |
| 19       | NUT, STEM          |
| 20       | RETAINING PLATE    |
| 21       | SEAL RING          |
| 22       | POPPET ASSEMBLY    |
| 23       | UPPER STEM GUIDE   |
| 24       | NIPPLE, LONG       |
| 25       | PLUG               |
| 26       | LIFTING LUG        |

